

**GOTRAX**

**S2**

**Folding Electric Bike**

**USER MANUAL**







## Congratulations on your purchase!

This user manual will help you assemble and operate your new electric bicycle. Be sure to read **ALL OF THE INFORMATION** in this manual before riding.

**NOTE TO ALL RIDERS UNDER THE AGE OF 18:**  
It's very important that you get parental permission before riding your electric bicycle.





# Don't Ride Until You Read This:



**ALWAYS** wear a helmet when riding your electric bike.



Make sure your electric bike has a **full battery** before taking it out to ride.



**Always** be aware of local road laws, and follow them.



**Do not** ride the bike under the influence of drugs or alcohol.



**Always** respect pedestrians.



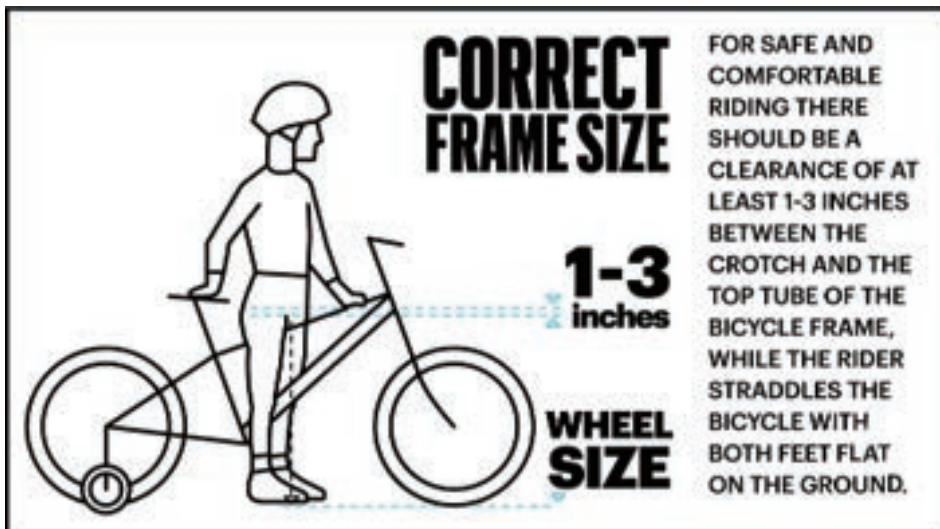
**Do not** ride under wet conditions. The electric bike may slide from under your feet causing injury. Wet conditions may damage the electronics and void the warranty.



# Warning Message

1. **Avoid water** - The electric bike is not waterproof. The electronics may be damaged due to water and water damage is not covered by our warranty. Riding in wet conditions is also very dangerous and may result in injury.
2. **Avoid prolonged exposure** to sun or rain and avoid storage in places with high temperatures or corrosive gas.
3. **Abuse** - We do not cover physical damage due to negligent care and extreme riding.
4. **Whenever you ride** the **GOTRAX** Electric Bike, you risk severe injury or even death from loss of control, collisions, and falls. Use caution and ride at your own risk.
5. **Do not modify** the product from the manufacturers original design.
6. **Do not exceed** the posted speed limit and obey all traffic laws.
7. **Avoid touching** the charging port directly and do not let it make contact with a metal object.
8. **Keep hands and all body parts away** from moving parts while operating the electric bike.
9. **Before riding** - be sure to check the electric bike over and make sure the electric bike is operating correctly before each use.
10. **Before riding** - be sure to check that the braking system is functioning properly; also be sure to check that all safety labels are in place and you understand the safety warnings.
11. **Before riding** - be sure that any and all axle guards, chain guards, or other covers or guards supplied by the manufacturer are in place and in serviceable condition.
12. **Before riding** - be sure to check that the tires are in good condition, inflated properly, and have sufficient tread remaining.

13. **Never exceed** the 220 lbs (100 kg) maximum load rating.
14. **The electric bike should never** be used by children under the age of 12.
15. **Maximum Speed** - Your electric bike goes the maximum speed of 15.5 mph.
16. **Make note that additional insurance may be required** to cover situations you encounter while riding an electric bike. It is recommended that you contact an insurance company or broker for advice and consultation.
17. **To conserve electricity**, use assist mode and avoid zero starting, frequent braking, driving against the wind, carrying heavy loads including other people and riding with insufficient air pressure.





# Unpacking and Product Specs

Remove all packaging material, then inspect each item for any accidental damage that may have occurred during shipping. You should find each of item in your box:



**ELECTRIC BIKE**



**TOOLS: (3) LARGE WRENCH, (2) ALLEN WRENCHES, (1) SCREWDRIVER**



**BATTERY CHARGER**

ITEM	SPECIFICATIONS
Model	S2
Product Dimensions	1180x490x1100 mm (46.4x19.2x43.3 in)
Package Dimensions	1020x260x620 mm (40.1x10.2x24.4 in)
Folded Dimensions	1180x490x680 mm (46.4x19.2x26.7 in)
Max Load	100 kg (220 lbs)
Max Speed	25 km (15.5 mph)
Battery	36V 7.8Ah
Pedal-Assist Mode	40-45 km (25-28 miles)
Pure Electric Mode	25km ( 15.5miles)
Max Angle of Climb	12 degrees
Charging Time	5.5 hours
Charger	Input 100-240V 50/60Hz AC plug; output 42V 1.5A DC 2.1 charging port
Tire Pressure	35-50 P.S.I
Bell/Horn Specifications	Bell
Frame Material	Steel
IP Level	IPX4



# Get To Know Your E-Bike





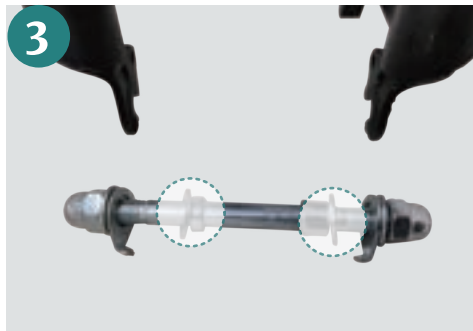
# Front wheel installation guide



Open the tool box and find the front axle core, remove one side of the nut gasket and put the axle core into the front wheel.



Load the front wheel into the front fork and use a wrench to lock the nuts on both sides.



Note the assembly position of the front axle gasket.



Note: Front wheel stop gasket must be installed in place.

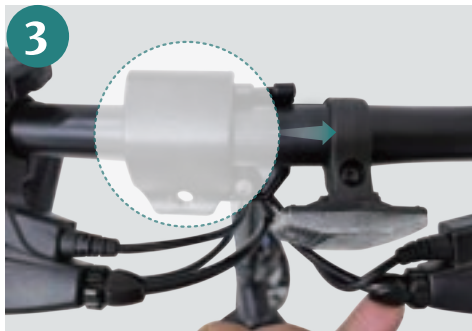
# The handle installation guide



1  
Loosen the snap nut and remove the snap handle.



2  
Push to the side to remove the snap pressure block.



3  
Center the handlebar across the top of the bracket. Slide the top of the bracket back into place.



4  
Assemble quick release handle (note the assembly position of gasket).



Tighten the nut onto the back of the quick release.



Lock the quick release handle. (note: ensure the top bracket is aligned correctly and the handlebar is centered).

# Adjusting the handlebar post



1  
Raise the handlebars and center them perpendicular to the front wheel.



2  
Lock the riser set screw.



3  
Lock quick release handle (check the latch is locked in place before each ride).



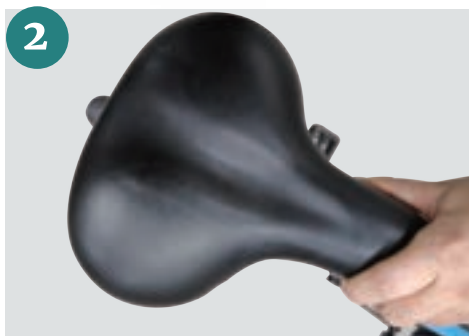
4  
To fold down the handlebars, press up on the safety lock while pulling the folding handle away from the post and lower the handlebars towards the seat.



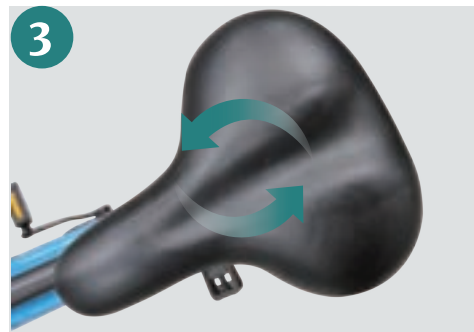
## Adjusting the Seat Tube



1 Open the lever of the seat bracket.



2 Adjust the seat to the desired height, please note the minimum insertion mark on the seatpost.



3 Rotate the seat so the front of the seat is facing forward.



4 Lock the lever.

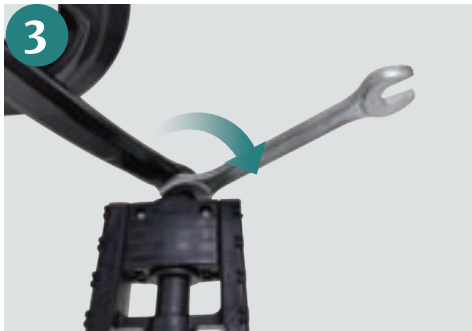
# Installing Pedals



1 Check the L and R marks on the pedals.



2 Take wrench from the toolbox.



3 Align screw on the Right pedal with the hole on the right crank arm. Place the wrench on the screw and turn clockwise.



4 Align the screw on the left pedal with the hole on the left crank arm. Place the wrench on the screw and turn counter clockwise.

# Charge your E-Bike

**Before using the electric bike, you must fully charge the battery.**



1. Locate the charging port.
2. Plug one side of the charger into the charging port and plug the other into an outlet.
3. A red light indicates the battery is charging, green indicates the battery is full.
4. Charging Time: 5.5 hours.



# Pre-Ride Preparation

1. **Please read this manual** to understand the performance and related requirements of the product.
2. **Check the condition of the whole bike:** carefully check the brake, tire, handlebar, folding buckle and quick release parts of the power folding bike.
3. **Check the battery:** Ensure the battery is fully charged before operation.
4. **Check the brake system:** Ensure the brakes are functioning properly. Ensure the motor cutoff function of the brakes is functioning properly. If the motor cutoff function is not working properly, do not ride the bike and contact the customer service team.
5. **Adjust the height of the seat:** The height of the seat can be adjusted to personal preference, but please note the minimum insertion mark on the seatpost. The seatpost must be inserted to this line at a minimum to ensure the safe operation of the bike.







# Folding the Electric Bike

1



Lower the seat as low as it can go.  
Place the pedals straight across.

2



To fold down the handlebars, press up on the safety lock while pulling the folding handle away from the post and lower the handlebars towards the seat.



# Basic Operations/Modes

1. **Power Assist:** Turn the key to power the bike. The motor will automatically engage when you start pedaling and disengage when you stop
2. **Throttle Assist:** Turn the key to power the bike. Twist the right grip to engage the throttle. The motor will power the bike until you release the grip.
3. **Unassisted Riding:** Without powering the bike, you may still ride the bike like a traditional. **non-electric bicycle.**

## SAFETY NOTES:

- Do not plug and pull the handle when it is powered on.
- Try not to bump the handle
- Don't change the background parameter setting of the speed regulating handle, otherwise you can't guarantee normal riding. If it is not, contact customer service as soon as possible and do not use.

# Function Instructions



**Battery Capacity Display:**  
When the battery is fully charged, 4 bars will be displayed. As you ride and use the battery, the bars will decrease to indicate the remaining charge. When there is one bar left, the battery will need to be recharged.



Turn the key one click to the right to power the motor. Turn the key an additional click to the right to turn on the headlight. Turn the key to the left to turn off the power to the motor.



# Battery Information

Before using the charger locate the voltage selector switch (li-ion chargers only) on the back of the back of the charger. Select either 100 volts or 240 volts depending on your country of residence. Using the wrong voltage setting will permanently damage the charger and/or electrical components on the hybrid electric bicycle.

## **BATTERY ASSEMBLY**

1. Use the matching charger.
2. Insert the round plug into the E-Bike first and then insert the charger plug into the electrical socket.
3. A red light indicates the battery is charging.
4. A green light indicates the battery is fully charged.
5. The lock position will vary from model to model.
6. The Battery is removable, the battery can be charged attached to the e-bike or pulled out and charged separately.
7. Anti-theft system of the battery: There is a hole under the frame. Where we can use the key to lock it.

## **CHARGING THE BATTERY**

1. When using the charger for the first time, carefully check whether the rated output voltage of the charger is consistent with the battery voltage and check whether the charger input voltage is consistent with the grid voltage.
2. When charging, first put the charger in a ventilated place, then insert the charger output plug into the charging port. Plug the electrical power plug into the 100-240V 50/60Hz AC Power Supply. Be sure to keep the input plug in contact with the AC outlet.

3. After charging, the input plug of the charger shall be pulled out first, and then the output plug connected with the folding bike shall be pulled out. Do not connect the charger to the charged power socket for a long time without charging.

## **PRECAUTIONS FOR BATTERY PROTECTION**

1. Do not place anything on the battery and charger when charging, otherwise the charger may overheat and cause serious consequences.
2. Please use the charger supplied by the original factory to charge the battery, if you use other than the original factory charger your battery will be disqualified from warranty.
3. You can charge your battery at any time if the battery loses power.
4. If you do not charge in time, your battery will gradually lose its performance and reduce its service life.
5. Protection can make your battery maintain about 80% of its capacity after more than 500 charges. But overall decline is inevitable.
6. If the battery remains in a state of power loss for a long time, it will lead to permanent loss of performance.
7. If you want to store your battery for a long time, please store and discharge it in a cool and dry place.
8. Keep the temperature between 10-21° C and avoid direct sunlight. Take the battery out for charging every 30 days.
9. Do not intentionally short-circuit the battery which will cause very serious consequences.
10. After the battery life has reached, do dispose of your batteries responsibly by researching local recycling regulations.
11. If you have questions about battery use, maintenance or storage, please contact customer service at anytime.



# Repair and Maintenance

1. The front and rear wheel of the bike should be centered between the fork or frame. If there are any missing or broken spokes, please find a local repair shop for assistance.
2. Check the rim for any abnormalities prior to riding. Contact with curbs, rocks, and other obstacles can cause damage to the rim which can lead to tire damage and punctures.
3. Clean and lubricate the chain frequently.
4. Normal riding and use will cause brake pads to wear. Ensure the brake pads are still making contact with the brake rotors.
5. Avoid riding in wet or snowy weather. If it is unavoidable, use caution and allow extra time and space for braking.
6. Check the tires frequently for any abnormalities or damage. The valve stem should be perpendicular to the rim. Replace excessively worn or damaged tires immediately.



# Riding Precautions

1. The range of the motor is affected by the amount that the battery is charged, tire inflation, level of assist, weight of the rider, and terrain.
2. Before each ride ensure the battery is fully charged, the tires are properly inflated, and that the brakes are functional.
3. Wear a safety helmet with proper size.
4. When parking, please switch the power gear to 0 or hold the brake tightly.
5. Abide by traffic laws and regulations, do not go retrograde.
6. This bike is equipped with reflectors according to national standards. Please do not remove the reflectors.
7. If service is needed, please local a local bike ship for assistance.
8. Do not modify any of the component on this bike. Modifying the components will void the warranty and make cause permanent damage to the bike.





# Troubleshooting & Warranty

Please contact our customer service team if you are experiencing problems or need more detailed information.

US team after-sales email: **support@gotrax.com**

CA team after-sales email: **canada@gotrax.com**

1. Users should operate in accordance with the product manual. In the event of manufacturer defect, contact the company for further assistance.
2. Is there are any component failure outside of the warranty, the company can still provide assistance but there may be a cost associated with any needed replacement parts.
3. If the battery needs to be replaced after the warranty has expired, please contact customer service for assistance obtaining a new battery. There will be a cost associated with a replacement battery.





WWW.GOTRAX.COM

#RideGOTRAX





# **GOLABS, INC**

GOTRAX.com  
2201 Luna Rd.  
Carrollton, TX 75006