

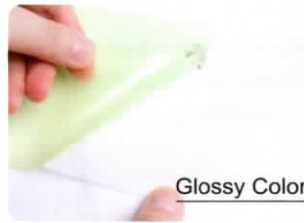
SUBLIMATION HTV INSTRUCTION

Notes:

This product is only suitable for sublimation on 100% cotton light-colored clothing.

Product with light green film is for glossy color and clear film for matte color.

Mirror your design on computer.



1. Cut

• IF YOU USE A SCISSOR



Print the sublimation paper and trim out the pattern of the sublimation paper first.



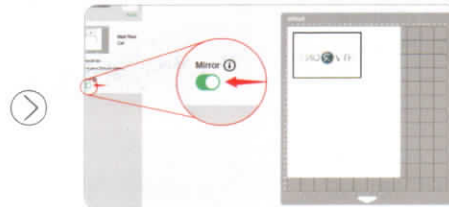
Let the pattern side face with the glossy side of sublimation HTV, and cut the sublimation HTV along the printed pattern.

After cutting, skip to step 3 ▼

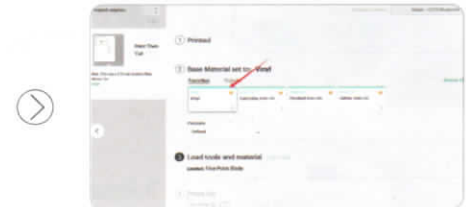
• IF YOU USE A CUTTING MACHINE



Connect the computer to the cutting machine and the inkjet printer(Sublimation Ink Needed).



Upload the picture to the cutting software and proceed Print-Cut. Print the sublimation paper with Registration Mark and then cut it by the cutting machine.



The pattern on sublimation HTV needs to be **offset** by about 2-5mm and then proceed cutting. THE MATTE SIDE is cutting side and faces up when cut.

• WARM TIPS

If your design is hollow and complicated, we recommend to use a clear film of HTV or HTVRONT transfer tape sticking to the back side of sublimation paper and then proceed the cutting and heat transfer.

Remember to cut the pattern according to the gram weight of the sublimation paper. For example, if you sublimation paper is 120g, just search for "120gsm" in the corresponding software parameters.

Sublimation HTV cutting parameters

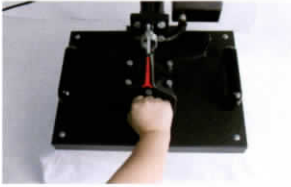
cricut	Silhouette
Pressure: Default	Blade: 6
Blade: Qualified Blade 45°	Force: 4
Setting: Vinyl	Speed: 5
	Passes: 1

2. Weeding

- Remove all excess unwanted vinyl;
- You can use a weed tools for small, stubborn pieces.



● LARGE HEAT PRESS



1.Preheat the heat press to 200°C, and preheat clothing for 5-10 seconds.



2.Position sublimation HTV on clothing, glossy side facing up.



3.Apply HEAVY PRESSURE for 10-20 seconds, and cold peel clear film.



4.Place the sublimation paper FACE DOWN on sublimation HTV.



5.Set heat press to 190-200°C, apply HEAVY PRESSURE for 40-50 seconds, then warm peel sublimation paper.

● HTVRONT HEAT PRESS OR OTHER MEDIUM HEAT PRESS



1.Preheat the heat press to 200°C, and preheat clothing for 5-10 seconds.



2.Position sublimation HTV on clothing, glossy side facing up.



3.Apply HEAVY PRESSURE (above 33-50LB) for 20-30 seconds, and cold peel clear film.



4.Place the sublimation paper FACE DOWN on sublimation HTV.



5.Set heat press to 190-200°C, apply HEAVY PRESSURE (above 33-50LB) for 40-60 seconds, then warm peel sublimation paper.

Notes:

- 1.To prevent from staining other side during sublimation, you can place a piece of white paper or a pad inside the clothing.
- 2.The glossy side needs face upwards during heat press.
- 3.For matte sublimation HTV - if cold peel sublimation paper, it may have some adhesive residues left on the pattern, you could wipe and remove it by a wet cloth.
- 4.Recommend to cut the sublimation HTV with an offset about 2-5mm based on the original pattern.
- 5.Recommend to make a test before mass production.
- 6.Wait 24 hours before first wash. Use cold water below 40°C and do not dry.

HTVRONT-Top Quality at A Great Price

Your satisfaction is our paramount duty here! If you have more concerns, just e-mail us.

Email: support@htvront.com