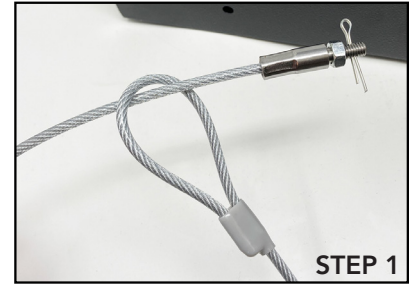


SECURITY CABLE INSTRUCTIONS

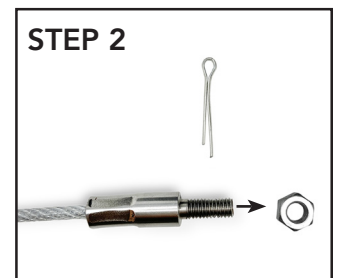
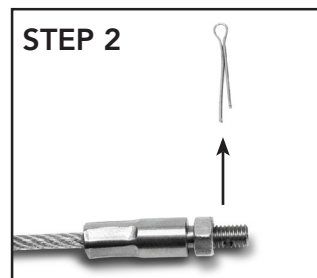
STEP 1:

- Wrap Cable Around a Secure Object
- Insert End with Pin and Bolt through the Loop on the other end of the Cable



STEP 2:

- Remove Pin from end of Bolt
- Unscrew Metal Nut from Bolt



STEP 3:

- Insert the end of Bolt into the Hole on the Side of the Safe

NOTE: Make sure the cable is on the outside of the safe as shown in step 3 images.



STEP 4:

- Tightly Screw Nut back onto end of Bolt on the inside of the Safe
- Insert Pin back into Hole on end of Bolt

