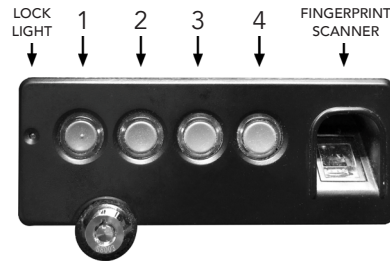


# BIOMETRIC HANDGUN HANGER SAFE

## LOCK INSTRUCTIONS



Your Electronic Lock is currently set with the default combination of:  
**1-2-3-4-1-2**

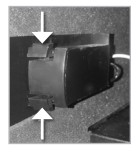
### 1. OPENING THE SAFE:



**Twist key LEFT** (counter-clockwise) to open door for the first time.

KEYS ARE LOCATED IN FOAM CUTOUT IN THE SAFES PACKAGING. Make sure to check all sides of packaging for keys.

### 2. INSERT BATTERY OR POWER CABLE:



**Pinch tabs** on battery tray & **slide out** from the battery compartment.

**Put Duracell Battery into tray** & slide tray with new battery **back into compartment**.



Use a **Brand New Duracell Coppertop 9 Volt Battery** with an **expiration date 5 years** in the future. This battery has the highest amperage output that is needed to open the safe door.

### 3. CHANGE / SET YOUR 6-DIGIT CODE:

**BUTTON 1**



**DEFAULT COMBINATION:**  
**1-2-3-4-1-2**

**STEP 1: Hold down BUTTON 1** until green light flashes & sound beeps twice. Green light will remain on.

**STEP 2: Enter your current 6-Digit Code (or Default Code)** - Lock will beep & flash twice.

**NOTE:** IF THIS IS THE **FIRST TIME YOUR SETTING A 6-DIGIT CODE** YOU WILL USE THE **DEFAULT COMBINATION** (SHOWN ABOVE) INSTEAD OF THE 'CURRENT' 6-DIGIT CODE FOR THIS STEP.

**STEP 3: Enter your NEW 6-Digit Code** - Lock will beep & flash twice.

**STEP 4: Re-Enter the new 6-Digit Code**

*The chime indicates the new Code was Successfully set!*

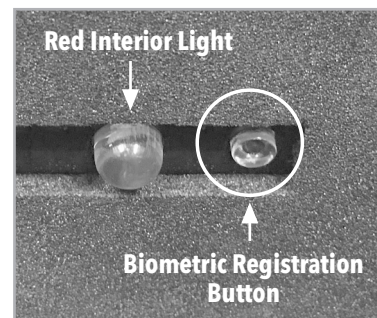
**NOTE:** If the lock beeps 5 times & flashes red, this means the new code was **not** successfully set. If this happens, simply start again at Step 1.

**IMPORTANT:** Test the new code several times with the door open to ensure it has been properly setup before you close the door.

**RECORD NEW 6-DIGIT CODE HERE:**

□ - □ - □ - □ - □ - □

### 4. REGISTER FINGERPRINT



**THE SAFE WILL OPEN ON ANY FINGERPRINT BY DEFAULT.**

Until you register your first fingerprint it will continue to open on any fingerprint. The Safe can **store up to 31 different fingerprints** at a time.

If you already tried registering a fingerprint and it still opens on any fingerprint, you did **NOT** successfully register that fingerprint and you will need to try again using the steps listed below.

**STEP 1: Press Biometric Registration Button ONCE** (DO NOT HOLD) Green light flashes, sound will beep twice & Scanner will illuminate green.

**STEP 2: Place finger fully on Scanner** - HOLD on scanner until lock Chimes



*Chime means your fingerprint was successfully registered!*

**ADDING MORE FINGERPRINTS:** Simply repeat the steps listed above for each new fingerprint.

**NOTE:** If lock beeps 5 times, light flashes red & scanner stays green, the fingerprint was **NOT** installed successfully. If this happens, simply restart from Step 1 of registering a fingerprint.

### SILENT MODE:

Press & **HOLD Button 4 for 5 seconds** until lock light flashes indicating the safe is now in silent mode. **Turn sound back on** by simply **HOLD Button 4 for 5 seconds** until you hear a beep.

### TROUBLESHOOTING:

**CONTINUOUS RED LIGHT ON** - You need to replace the battery with a Brand New **Duracell Coppertop 9 Volt** that expires after 5 years.

**WON'T STOP BEEPING?** - You are in **Lockout mode**. Lockout mode is caused by **5 wrong entry attempts** using the keypad or biometrics. Lockout mode will **end after 5 minutes (with power)**. Unplugging the power cable or taking out the battery during lockout mode will only pause the 5 minute period to resume next time power is added back to safe.

### RESETTING THE LOCK:

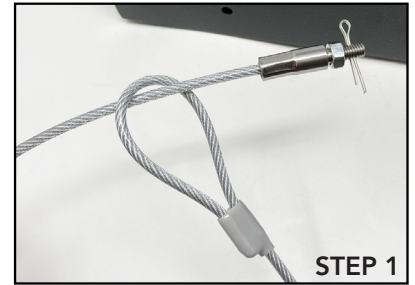
**HOLD Biometric Registration Button** for about 5 seconds until you hear the lock chime.

Safe will revert to default settings. The lock will open on the Default 6-Digit Combination [1-2-3-4-1-2]. All registered fingerprints will be erased & default to open on any fingerprint until the first fingerprint is successfully registered.

# STEALTH HANDGUN SAFE **SECURITY CABLE INSTRUCTIONS**

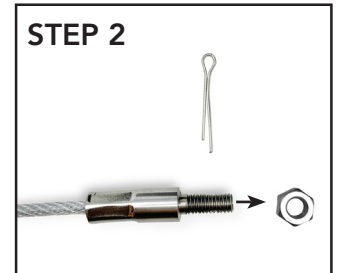
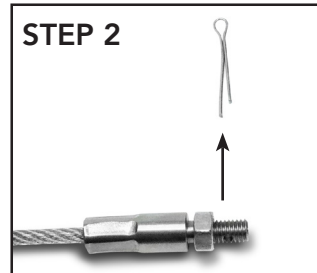
## **STEP 1:**

- Wrap cable around a secure object
- Insert end with pin and screw through the loop on the other end of the cable



## **STEP 2:**

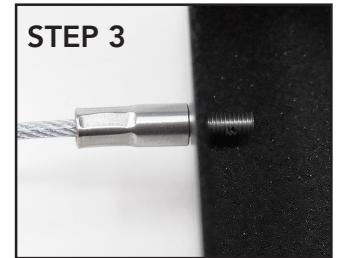
- Remove pin from end of security cable
- Unscrew metal bolt from screw



## **STEP 3:**

- Insert the end of the screw into the hole on the side of the safe

NOTE: Make sure the cable is on the outside of the safe as shown in step 3 images.



## **STEP 4:**

- Tightly screw bolt back onto end of screw on the inside of the safe
- Insert pin back into hole on end of screw



**WATCH OUR INSTRUCTIONAL VIDEO ON SETTING UP YOUR NEW SAFE:**



← **SCAN HERE**

**USING THE CAMERA ON YOUR SMARTPHONE OR A QR CODE SCANNER**  
TO LEARN ALL ABOUT HOW TO SET YOUR COMBINATION & REGISTER A FINGERPRINT

OR TYPE IN THE URL [tinyurl.com/BiometricHHS](https://tinyurl.com/BiometricHHS) INTO YOUR BROWSER