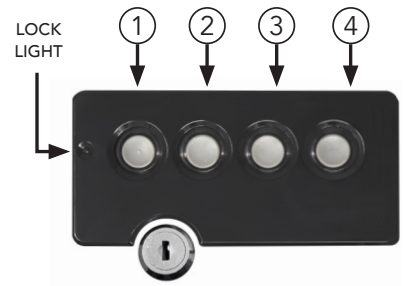


HANDGUN HANGER SAFE

LOCK INSTRUCTIONS



1. OPENING THE SAFE FOR THE FIRST TIME



Twist key **LEFT** ↻ (counter-clockwise) to open door

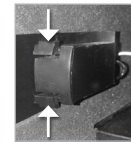
Keys are Located in Foam Cutout in the safes Packaging. Make sure to check all sides of packaging for keys.

2. INSERT BATTERY OR POWER CABLE:



Use a **Brand New Duracell Coppertop 9 Volt Battery** with an **expiration date 5 years** in the future. *This battery has the highest amperage output that is needed to open the safe door.*

- Pinch **Tabs** on Battery Tray & Slide out from the Battery Compartment.
- Insert **Battery into Tray** & Slide back into Battery Compartment.

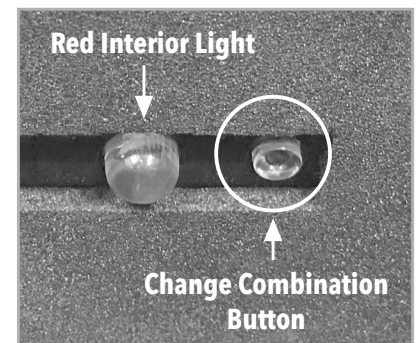


2. SETTING UP YOUR 6-DIGIT CODE

FACTORY DEFAULT CODE: **1-2-3-4-1-2**

Press (Do NOT Hold) **Change Combination Button** - Next to the Red Light
Enter your **New 6-Digit Code** - Lock will Beep, Click & light will turn on
You Have Successfully Added your New Code.

IMPORTANT: Test the new code several times with the door open to ensure it has been properly setup before you close the door.



SILENT MODE Hold Down **Button 4** for about 5 seconds until you see a green flash on the lock light. Hold down Button 4 again to turn sound back on.

TROUBLESHOOTING

CONTINUOUS RED LIGHT ON - You need to replace the battery with a Brand New **Duracell Coppertop 9 Volt** that expires after 5 years.

WON'T STOP BEEPING? - You are in **Lockout mode**. Lockout mode is caused by **5 wrong code inputs** using the electronic keypad in a row. Lockout mode will **end after 5 minutes (with power)**. Unplugging the power cable or taking out the battery during lockout mode will only pause the 5 minute period to resume next time power is added back to safe.

INSTRUCTIONAL VIDEO

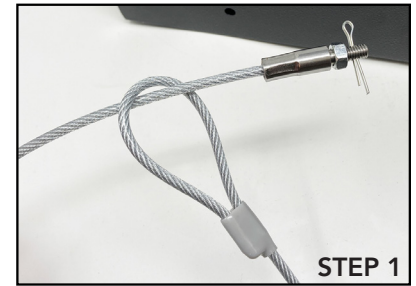
Scan the QR Code below to watch an instructional Video on setting up your Handgun Hanger Safe



HANDGUN HANGER SAFE **SECURITY CABLE INSTRUCTIONS**

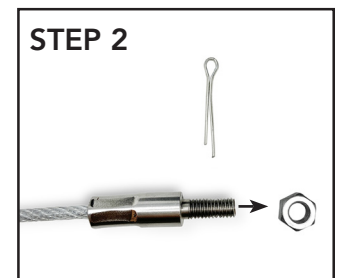
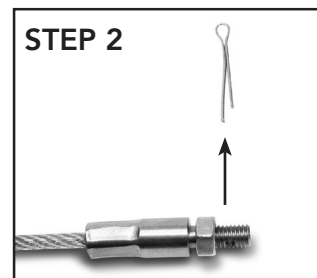
STEP 1:

- Wrap Cable Around a Secure Object
- Insert End with Pin and Bolt through the Loop on the other end of the Cable



STEP 2:

- Remove Pin from end of Bolt
- Unscrew Metal Nut from Bolt



STEP 3:

- Insert the end of Bolt into the Hole on the Side of the Safe

NOTE: Make sure the cable is on the outside of the safe as shown in step 3 images.



STEP 4:

- Tightly Screw Nut back onto end of Bolt on the inside of the Safe
- Insert Pin back into Hole on end of Bolt



TO SEE ALL INSTRUCTIONS, VISIT:
www.StealthSafes.com/Instructions

