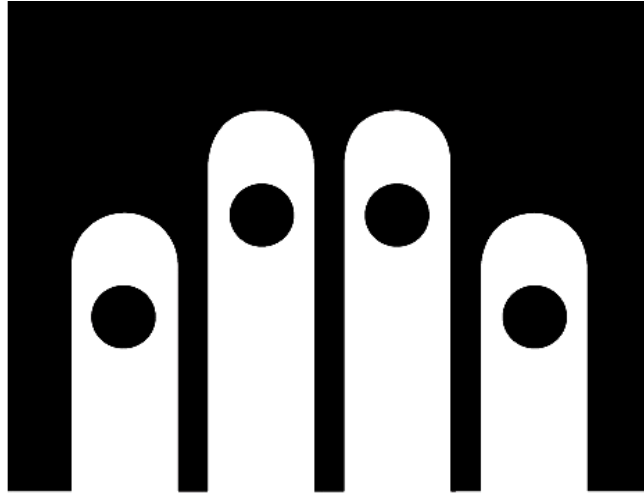


SAFE • QUICK • STRONG • SMART



GunVault

Owners Manual

Models:

**GV1000C-STD/DLX
GV2000C-STD/DLX**

216 South 2nd Avenue
Building No. 932
San Bernardino, CA 92408
(909) 382-0505
(800) 222-1055

Covered by United States Patent Numbers 5,161,396 and 5,549,337

TABLE OF CONTENTS

- Warning and Recommendations
- Congratulations on Your Purchase of a GunVault Safe
- 1) GunVault Safe Features and Functions..... Pg. 5
- 2) Getting Started Pg. 5
 - a) Securing Your Keys
 - b) Locating the Battery Tray Kit
 - c) Loading the Battery Tray
 - d) Installing the Battery Tray
 - e) Getting Ready to Program
 - f) Choosing Your Own Access Code
 - g) Programming the Access Code
- 3) Turning off Keypad Sound..... Pg. 9
- 4) Tamper Detect Feature..... Pg. 9
- 5) Security Sleep Mode..... Pg. 9
- 6) Mounting the Safe..... Pg. 9
- 7) Installation of optional Security Cable..... Pg. 10
- 8) Motion Detection and Alarm Features (Deluxe Models)..... Pg. 10
 - a) Setting the Alarm
 - b) Setting the Sensitivity
 - c) Turning off the Audio Alarm
- 9) Internal Courtesy Light (Deluxe Models).....Pg. 11
- 10) DC Power Jack and External AC/DC Adapter (Deluxe Models).....Pg. 11
- 11) Maintenance.....Pg. 12
 - a) Low Battery Indicator
 - b) Battery Replacement
 - c) Lubrication
 - d) Removable Shelf (MultiVault Only)
- 12) Frequently Asked Questions..... Pg. 13
- 13) Technical Support.....Pg. 14
 - a) Requirements for Return & Repair
 - b) Fees and Charges
 - c) Abandonment for Failure to Pay
- 14) “Limited Warranty”..... Pg. 15

WARNINGS AND RECOMMENDATIONS

Anything written in boldface type is a **WARNING**. Failure to observe these instructions constitutes a **MISUSE** of this product and may result in serious physical injury or **DEATH**.

NO UNAUTHORIZED REPAIR

GunVault safes are serviceable at the factory only. Any tampering, unauthorized repair and/or modification will void all warranties, and may cause the safe to fail unexpectedly, or be damaged. If in doubt, call GunVault technical support.

Congratulations on Your Purchase of a GunVault Safe!

Your new GunVault safe is a high quality product, which will give you years of service, backed up by excellent Technical Support and a strong Warranty. Before you get started reading this manual, please take a few moments to fill out your Warranty Registration Card and mail it in. Or register online at www.gunvault.com.



Each GunVault safe includes the following:

- | | |
|--|---------------------------------|
| GunVault safe | Two keys |
| Plastic battery tray (pre-installed) | Owner's Manual |
| Two thumbnuts | Mounting Template |
| Three safe mounting screws | Warranty Card |
| AC/DC power adapter (Deluxe Models Only) | Plastic shelf (MultiVault only) |

1. GunVault Safe Features and Functions

Product Description and Features

GunVault safes are manufactured from 16-gauge steel with pry-resistant doors and may be used to store a variety of items out of reach of children and other unauthorized persons.

Standard Features Include:

- Spring-loaded door for quick access to contents
- Corrosion resistant powder coat wrinkle finish
- No-Eyes Keypad
- Back-up key lock access with two keys
- Security Sleep Mode in case of unauthorized keypad entries
- Low battery warning
- “Knock-outs” for installation of optional Security Cable

Deluxe Models provide the following additional features: (see Deluxe Model instructions beginning on Page 10)

- Interior Courtesy light
- Motion Detection and Audible Alarm
- Audio Low-Battery Warning
- Power connection jack for external power supply

Optional Accessories:

- Steel Security Cable



2. Getting Started



Securing Your Keys

**REMOVE YOUR KEYS AND SECURE THEM!
DO NOT LOCK THEM IN THE SAFE!**

Think carefully about storing your keys. If the key for a GunVault safe is on your key chain, an unauthorized person might gain access to it. Never hide or leave GunVault keys where children could gain access to them. If you have a bank safe deposit box, one key could be kept there in case you lose one.

IMPORTANT: We recommend that you use **ONLY Duracell AA batteries**. **Eight (8) AA batteries are required.** **NEVER attempt to use a 9v battery or rechargeable batteries – they will not work!**

Locating the Battery Tray Kit

With your palm up, reach inside the GunVault safe and find the far end of the ceiling foam.

Pinch the far end, and carefully pull it part of the way out of the unit (like the tongue of a shoe). **DO NOT TEAR IT LOOSE!**



LOCATE THE BATTERY TRAY, AND THE TRAY MOUNTING SCREWS ON THE CEILING OF THE SAFE.

Loading the Battery Tray

Make sure that the ends of each battery match the positive (+) and negative (-) marking in the tray exactly. Make sure that the batteries are not loose.



Installing the Battery Tray in the Safe

Position the safe with the door facing you, keypad upward.



- Connect the power cable to the battery tray. You will hear a beep audio signal, confirming that power is connected.
- **Do not pinch the power cable between the tray and the ceiling.**
- Press the tray into position, aligning the slots/holes onto the mounting studs.
- Use the thumbnuts to secure the tray.
- Do not over-tighten the fasteners; snug is best.
- Press the foam ceiling back into your unit to cover the battery tray and wire-tuck in the far end to secure it.

Close the Door and Practice



**SECURE YOUR KEYS!
DO NOT LOCK THEM INSIDE THE SAFE!**

For practice, use the factory-default code, which is: Press each button one time, from left to right – one, two, three, four. (A common mistake is to press button one once, button two twice, button three three times, etc.) Notice the “feel” of the keypad; feel the “click” as you press each key (One, Two, Three, Four).

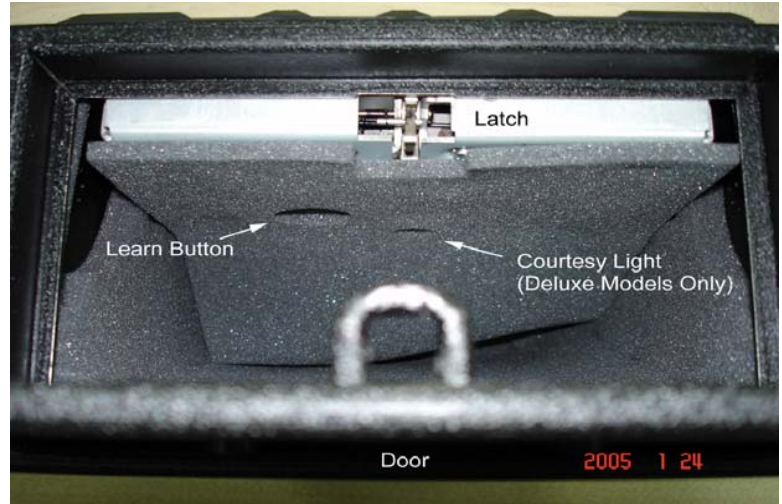
Getting Ready to Program

- Find the LED light in the keypad.
- It can glow either green or red. Depending upon the function being utilized.
- There is an audible beep when keys are pressed.

Choosing your Own Access Code

- Don't tell anyone your code.
- An access code is a series of entries on the keypad. **WARNING:** This is not a numeric keypad, you cannot program digits (there is no 5, 6, 7, 8, 9, or 10).
- An “entry” is a single press of one or more buttons at the same time.
- You can use a minimum of three entries, or a maximum of six entries, for your access code.

- For each entry of the access code, you may choose one, more than one or ALL of the buttons on the keypad in combination.
- Be careful in choosing your access code. You'll want to be sure that you can operate the unit quickly without making an entry error.
- Example of a valid access code; Press button one, press button two, press all four buttons together.
- Choose an access code which is easy to use, but try to make it an access code which is difficult to guess.
- Your current address or phone number digits are not good choices, because the keypad only has four buttons.



Notes:

- Avoid programming in bright light; it might prevent you from seeing the red/green LED.
- Look directly down upon the keypad.
- Do not attempt to press the buttons with the safe resting upon a soft surface, such as a bed, a pillow, or a deep pile carpet.

Programming Your Access Code

Note: There is a soft “beep” sound and a brief light with each keypad entry. Enter the factory-default code, from left to right: one, two, three, four. The door will open. Leave the door open.

Find the Learn Button (see above).

- Press and hold the Learn Button for two seconds. You should see the green light and hear the beep – the unit is now in “Learn” mode.
- Enter your new code. The light will remain green.
- Press and hold the Learn button again for two seconds. The light will turn red, and you will hear a beep. Release the Learn Button.
- While the light is red, enter your new code a second time to confirm it.



- Press and hold the Learn Button a third time for two seconds. Release the Learn button. The light will blink green five times. And you will hear five beeps, confirming that the new code has been accepted. If the red light blinks three times with three soft beeps at this point, and error has occurred. Just start over by depressing the Learn Button for two seconds.

3. Turning off Keypad Sound

To disable the Keypad Sound (beeps), press and hold the Learn Button for two seconds, three times. The green light will blink three times and you will hear three beeps. Release the button. Then press and hold buttons two and three for five seconds. The Keypad Sound is now disabled, but this does not disable the alarm sound.

4. Tamper Detect Feature

Entering an invalid access code sets the tamper indicator.

Hold down buttons two and three for five seconds to read the tamper indicator.

- If tampering has been detected, the red light will glow until buttons two and three are released.
- If tampering has not been detected, the green light will glow until buttons two and three are released.

5. Security Sleep Mode

The GunVault safe has a “Security Sleep Mode” that activates when 24 consecutive incorrect entries are made (if the correct code is entered within 24 entries, the door will open). During Sleep Mode the keypad does not accept any entries and last for two minutes. If a button is depressed during Sleep Mode, the LED blinks red and the alarm beeps three times. The backup key may be used to open the safe during sleep mode.

6. Mounting the Safe

The Vault can be mounted in almost any direction. Think carefully before you begin to drill holes; make sure you could easily reach the keypad, but protect the safe from children.

IMPORTANT: Do not mount the Vault with the door facing down! The contents could fall out when the door is opened!

Think about your own unique mounting requirements. You may wish to use washers, lag bolts, or other mounting devices for reasons of your own.

Compare the Mounting Template to the safe. Notice the mounting holes in the bottom of the safe. There are two “key-slot” holes, and four round holes.



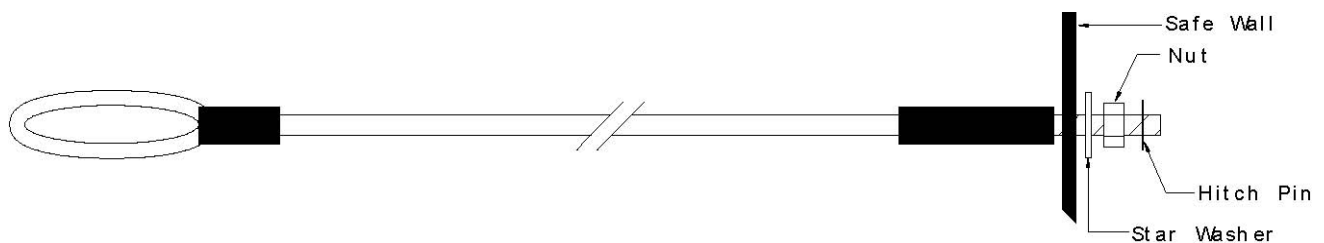
- a) Using the template provided, drill starter holes with drill bits appropriate for your installation. Drive screws only into the two key-slot holes. Drive the screws in until just enough room is left between the head of the screw and the mounting surface to permit you to slide the Vault's key slots over the screws.
- b) Slide the Vault key-slots on over the screws.
- c) Now lift the foam padding in the bottom of the Vault and insert screws into remaining holes as desired, to retain the safe in place. A minimum of three (3) screws must be used to mount the safe.
- d) Tighten all screws and smooth the foam lining. Your Vault is now securely attached to the mounting surface!

7. Installation of Optional Security Cable

“Knock-outs” are provided on both sides to permit attachment of the Security Cable. If the Security Cable is to be installed, use a punch or nail set and a hammer to remove the knock-out. Before inserting cable mount, be sure to remove the little metal knock-out tab from your safe. Do not allow this small metal piece to remain inside your safe.

Hint: A pair of needle-nosed pliers will be useful for installing the hitch pin.

- a) First, loop the end of the security cable through the eye and around a stationary object.
- b) Then, insert the threaded mount through the hole in the safe.
- c) Hold the mount in place while you slide the star washer over the threaded end inside the safe.
- d) Spin on the nut and tighten “finger tight.”
- e) Insert the Hitch Pin through the hole in the threaded mount, to ensure that the nut cannot come off.



8. Motion Detection and Alarm Features (Deluxe Models Only)

Deluxe Model GunVault safes are equipped with Motion Detectors and Audio Alarms. Once armed, this system will protect the safe and its contents if either one of the following occurs:

1. Twenty-four wrong entries are entered into the keypad in succession.
 2. The safe is moved or disturbed.
- If the Motion Detector is armed, shock, vibration or motion of any kind may trigger the Audio Alarm.
 - If the alarm is triggered, a four second continuous tone will sound, followed by 25 short audio ticks, indicating that the alarm is about to sound.

- This pre-alarm delay will last for about ten seconds, after which the alarm will sound for one minute.
- If a valid code is entered during this period, the alarm will stop.
- If the alarm is not turned off, it will enter Battery Saver Mode after two minutes. In Battery Saver Mode the alarm will sound once per minute. Turn the alarm off at any time by entering the access code.

Setting the Alarm

To arm the Motion Detector Feature, press buttons one and four at the same time and hold for more than five seconds. A beep will sound once per second for 10 seconds. The alarm feature is now armed.

Setting the Sensitivity

The Motion Detector has four levels of sensitivity. Level one is the MOST sensitive, and level four is the LEAST sensitive. The factory setting is level two.

- To change the sensitivity level, press and hold the Learn Button two times, for two seconds each press. The green light will flash and a beep will be heard each time.
- The sensitivity level is now set.

EXAMPLES:

1. Press button one to select the highest sensitivity.
2. Press button four to select the lowest sensitivity.

Turning off the Audio Alarm

To disable the Audio Alarm, enter a valid access code. If the alarm has already been triggered, enter a valid access code. If an invalid access code has been entered, and the alarm is sounding, wait a few seconds and enter a valid access code. Note: Once a valid access code has been entered, the alarm and motion sensor are disabled. To re-enable the alarm function, follow the instructions for setting the alarm.

9. Internal Courtesy Light (Deluxe Models Only)

When an access code has been used to open the safe, the interior light will shine for five seconds, allowing a clear view of the interior.

10. DC Power Jack and External AC/DC Power Supply (Deluxe Models Only)

Warning: Never attempt to operate the safe with external power alone. Batteries MUST be installed before and during operation with the external power supply, in order to avoid interruption of power and loss of access codes.

Any interruption of power will cause the computer memory to reset to the factory code: one, two, three, four. If this occurs, anyone who enters the one-two-three-four code will gain access to the safe and its contents.

Warning: Never attempt to plug in a battery charger of any kind. Fire or explosion of batteries could result. Never use rechargeable batteries of any kind in a GunVault safe. Their power characteristics are not compatible with the safe.

The AC/DC power supply specified is NOT a battery charger; it is an external power supply to be used only when batteries are installed.

11. Maintenance

Low Battery Warning Indicator

The Low Battery Warning Indicator on the Standard Models is seven red flashes and seven soft beeps when the valid access code is entered. For Deluxe models the Low Battery Indicator is an audio alert which sounds once per hour in the form of two loud beeps.

Battery Replacement

Warning: Replace the batteries once a year regardless of whether or not the low battery indication is observed.

Always check carefully to be sure that all of your batteries are facing in the correct direction (i.e. positive (+) end to positive symbol, negative (-) end to negative symbol). One battery facing the wrong way will lower the power output of your battery tray, potentially causing unreliable operation.

After replacing the batteries, or when power has been disconnected for more than a few seconds, the unit will revert to the factory-default code (one, two, three, four) and you must re-program your personal access code(s).

Lubrication

It's a good idea to lightly coat the door hinge spring and door latch-loop with quality oil at least once a year. Never spray anything into the latch mechanism.

Removable Shelf (MultiVault only)

The MultiVault (large model) has a removable shelf, which can be easily pulled out to allow for storage of larger items. If the shelf is removed, it should be stored carefully to avoid damage or loss. To reinstall, simply slide the shelf back into the shelf guide slots. The beveled edge faces front.

12. Frequently Asked Questions

- I can't program my GunVault.
Disconnect the battery tray for 30 seconds and try to program again.
- I hear a click when I enter my code.
Replace your batteries (Duracell is recommended).
- I hear a whirl noise when I try to open my GunVault.
Please call Technical Support for assistance.
- My new GunVault is missing the Battery Tray.
The Battery Tray is pre-installed inside on the ceiling of the GunVault. Reach inside the unit and find the far end of the ceiling foam. Pinch the far end, and carefully pull it part of the way out of the unit. **DO NOT TEAR IT LOOSE.**
- My brand new GunVault door will not open.
Place the unit on a flat surface, turn the key, and hit the top/side of the safe with your palm. In rare occasions you may have to use a flat head screw driver by placing the head between the body of the unit and the door. You might also have to bang the lower left edge on the ground.
- My keys don't open my GunVault.
Check the key number on the keys and the number of the lock cylinder and make sure the key is inserted fully.
- I've lost my keys.
Keys beginning with an "A" or "R" have a limited availability. Please call Technical Support for assistance. An extra pair of keys cost \$20.00 with shipping (excluding orders outside the continental U.S.).
- I can't find my Serial Number.
The Serial number is located under the foam material on the floor of the GunVault.
- I want to program multiple users into my GunVault.
Only the GVB-2000 Bio can be programmed for up to 30 enrolled finger prints. All other units can be programmed for one (1) user.
- How long can I make my code?
The code has a minimum of three (3) and a maximum of six (6). Excluding the GVB-2000 Bio which uses a finger template.
- Which directions can the GunVault be mounted?
The GunVault can be mounted any direction needed. Mounting the unit with the door facing down is not recommended.
- How long should the batteries last?
Batteries last nine (9) months to one (1) year (Duracell is recommended). Units subjected to extreme heat or cold will have an effect on battery life.

13. Technical Support

If you have followed the above steps carefully and still have a problem operating your safe, phone GunVault Technical Support. Almost all problems can be solved within minutes over the telephone.

Requirements for Return & Repair

If possible, do not return your GunVault safe to your dealer. Instead please review Frequently Asked Questions (Page 13). If questions are not answered call GunVault Technical Support which can solve most problems over the telephone, making return unnecessary. GunVault delivered without a pre-arranged Return Authorization Number may be returned or destroyed.

Fees & Charges

Under warranty; repair or replacement at GunVault's option, and free UPS ground return shipping within the continental U.S.

Out of warranty; minimum fee for examination and handling is \$19.95. Shipping, Parts, and labor will be extra.

- GunVault safes delivered without a pre-arranged Return Authorization Number may be returned or destroyed.
- GunVault safes sent for repair with heavy objects inside may be damaged in shipping, and corresponding repairs may be charged to the owner.
- **Tape the keys to the top of the safe before shipping.**
- When proper Return Authorization has been obtained, the GunVault safe should be shipped in its original carton or in a suitable sturdy equivalent, fully insured, and with the shipping charges PREPAID unless otherwise arranged with the Company in advance.

Abandonment for Failure to Pay required Fees

GunVault safes left without payment of required fees for more than 90 days will be considered to be abandoned and will be disposed of.

14. “Limited Warranty”

1. GunVault (the “Company”) warrants to the original consumer (the “Purchaser”) that the MiniVault safe and/or MultiVault Safe (the “MiniVault safe” and/or the “MultiVault safe”) will be free from defects in workmanship and materials for a period of one (1) year from the date of purchase. These warranties are not assignable or transferable to any other person.
2. Any damage to the MiniVault safe and/or MultiVault safe as a result of misuse, tampering, abuse, neglect, accident, improper installation, modification, unauthorized service, destruction, or the alteration of the serial number, or use violative of the instructions furnished by the Company will void this warranty.
3. The sole responsibility of the Company shall be limited to the repair or replacement (in its sole discretion) of any component of the MiniVault safe and/or MultiVault safe which fails to conform to this warranty at no cost to the purchaser for a period of one (1) year from the date of original purchase.
4. Contact the Company directly to obtain service under this warranty. If it becomes necessary to send a defective product to the Company, a Return Authorization Number must first be obtained from the company.
5. Products shipped without prior Return Authorization and Return Authorization Number may not be accepted, and the Company will not be responsible for their disposition and/or cost of return to the owner.
6. The Company will not assume any responsibility for any loss or damage incurred in shipping. All return authorized products should include a copy of the original invoice in order that this warranty may be honored.
7. This warranty is not an insurance policy. The Company is not responsible for damage to or theft of the Purchaser’s MiniVault safe and/or MultiVault safe or its contents.
8. We recommend that the enclosed warranty card be completed in full, and returned to the Company within ten (10) days of the original date of purchase to validate this warranty.
9. Any implied warranties which the purchaser may have are limited to the duration of the warranties described above. There are no further warranties which extend or apply beyond the face hereof, and the company expressly disclaims and excludes any and all warranties of merchant ability or fitness for a particular purpose. Some states do not allow limitations on how long an implied warranty lasts, so the above limitation may not apply to you.
10. Repair or replacement shall be the sole remedy for the purchaser under this warranty. The company shall not be liable for any direct, indirect, incidental or consequential damages, losses or expense arising from the use or misuse of the MiniVault safe and/or MultiVault safe. Some states do not allow the exclusion or limitations of incidental or consequential damages, so the limitation may not apply to you.
11. This warranty gives you specific legal rights, and you may also have other rights which vary from state to state.

Inquiries or questions regarding GunVault safes should be directed to:
Customer Support 800-222-1055