

*the Puck Sucker™*

Instruction Book – BEA503



**Breville®**



## Contents

- 2 Breville Recommends Safety First
- 6 Components
- 7 Assembly
- 8 Functions
- 9 Care & Cleaning
- 10 Troubleshooting
- 12 Warranty

## BREVILLE RECOMMENDS SAFETY FIRST

At Breville we are very safety conscious. We design and manufacture consumer products with the safety of you, our valued customer, foremost in mind. In addition, we ask that you exercise a degree of care when using any electrical appliance and adhere to the following precautions. Misuse can cause potential injuries.

## IMPORTANT SAFEGUARDS

### READ ALL INSTRUCTIONS BEFORE USE AND SAVE FOR FUTURE REFERENCE

- Remove and safely discard any packaging material or promotional labels on the product or on any of the attachments before using for the first time.
- Ensure the product is properly assembled before use.
- This appliance is not intended for use by persons (including children) with reduced physical, sensory or mental capabilities, or lack of experience and knowledge, unless they have been given supervision or instruction concerning the use of the appliance by a person responsible for their safety.

- Children should be supervised to ensure that they do not play with the appliance.
  - The Puck Sucker™ is only intended for use with Breville 58mm portafilter and basket.
  - Always remove the battery before storing or when not in use for an extended period of time.
  - Keep the appliance clean.
  - Do not use this appliance if it is worn, has been dropped or is damaged in any way.
  - Any maintenance other than cleaning should be performed at an authorised Breville Service Centre.
  - This appliance is for household use only. Do not use the appliance for anything other than its intended purpose. Do not use in moving vehicles or boats. Do not use outdoors.
- Do not use on a sink drain board. **Misuse may cause injury.**
- Never use attachments or accessories that are not supplied with this product. Failing to follow this instruction may cause product malfunction, product damage or even pose safety risk.
  - Do not attempt to operate the appliance by any method other than those described in this book.
  - Do not incinerate this appliance even if it is severely damaged.
  - Do not use the Puck Sucker™ with a plastic bag in the container.
  - Do not knock the portafilter on the Puck Sucker™ with sudden force.

## TYPES OF BATTERY THAT MAY BE USED:

- 9V batteries:
  - Alkaline 9V battery (6LR61 6LF22 1604A)
  - Lithium 9V battery (1604LC)

### **WARNING**


- Non-rechargeable batteries are not to be recharged.
- Different types of batteries or new and used batteries are not to be mixed.
- Do not expose the appliance or battery to excessive temperatures.
- Batteries can contain flammable substances, and if handled improperly may leak, heat up, ignite, or explode.
- Terminals of the battery-operated appliance or battery being short circuited by metal objects can overheat and cause injury or fire.

- Keep batteries out of reach of children. Swallowing can lead to chemical burns, perforation of soft tissue, and death. Severe burns can occur within 2 hours of ingestion. Seek medical attention immediately.

### **CAUTION**

- Batteries are to be inserted with the correct polarity.
- Exhausted batteries are to be removed from the appliance and safely disposed of.
- Do not use modified or damaged batteries.
- The supply terminals must not be short-circuited.
- On battery leakage, remove the battery immediately, but proceed with caution: work in a well-ventilated area, away from heat sources.

Wear protective eyewear and gloves if possible, to avoid contact with the residue. After removing the leaked batteries, clean out the battery compartment with a cotton swab or an old toothbrush. Put the batteries in a plastic bag and recycle. Be sure to avoid contact with the battery leak residue at all times. Wash your hands thoroughly with soap and water afterwards. In case of eye and skin contact, seek medical attention immediately.

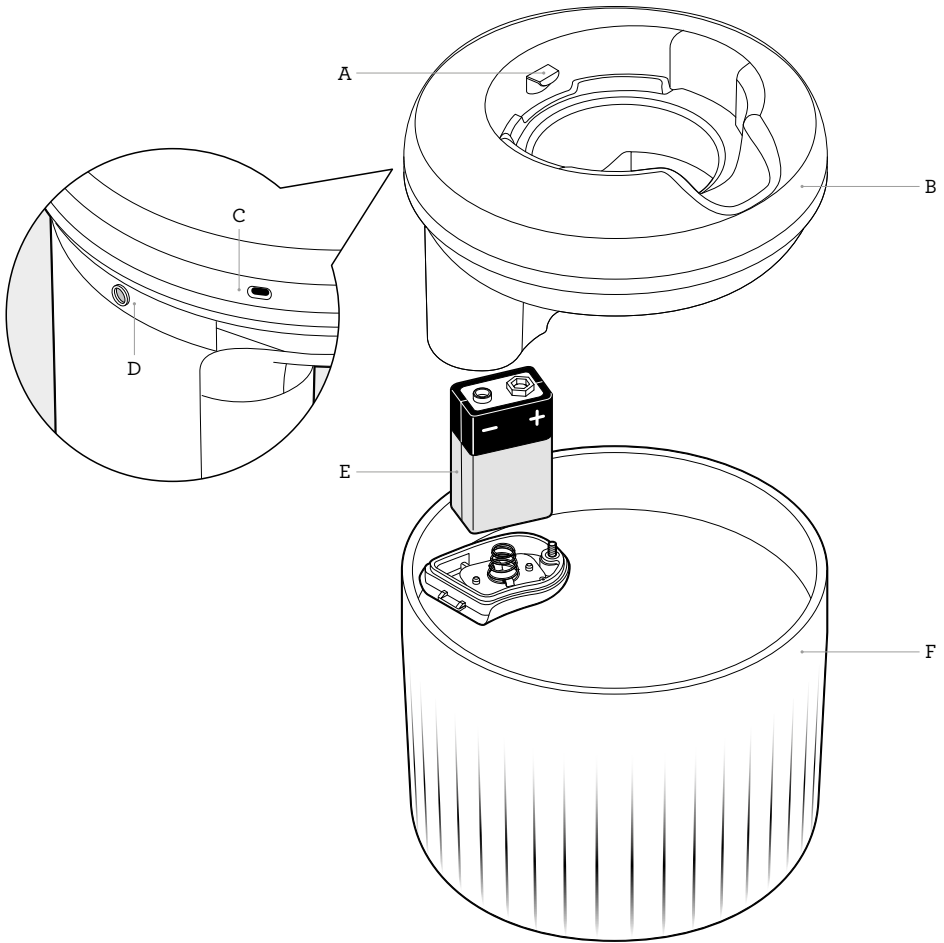
 Do not immerse the lid in water or any liquid. The lid is not dishwasher safe. Only the container is dishwasher safe. Use only a damp sponge to clean.

 The symbol shown indicates that this appliance should not be disposed of in normal household waste. It should be taken to a local authority waste collection centre designated for this purpose or to a dealer providing this service. For more information, please contact your local council office. Please dispose of batteries in an environmentally friendly manner. Do not throw batteries into normal household waste. Please use the return and collection systems in your community or contact the retailer where you purchased the product.

**FOR HOUSEHOLD USE ONLY  
SAVE THESE INSTRUCTIONS**



## Components



- A. Activation switch
- B. Lid with battery compartment
  - fits 58 mm Breville portafilters
- C. \* Air Outlet port
- D. \* Air Inlet port with filter
- E. 9V Battery
- F. Container
  - dishwasher safe (top rack only)



### NOTE

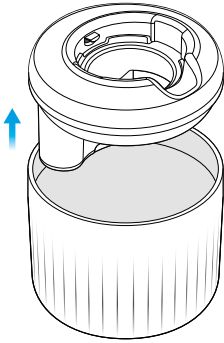
\*Keep the inlet and outlet port area clean and free from any coffee grounds or any particles to maintain good quality suction.



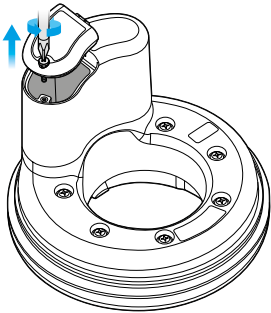
# Assembly

## INSTALLING & REMOVING THE 9V BATTERY

1. Holding the container on one hand, pull upwards to remove the lid with the other hand.

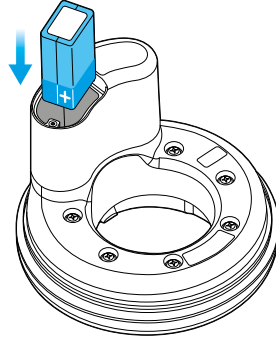


2. Using a Philips-head screwdriver, unscrew the battery cover, found underneath.

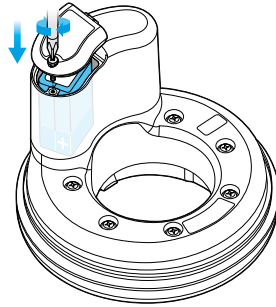


3. Carefully set-aside the battery cover.

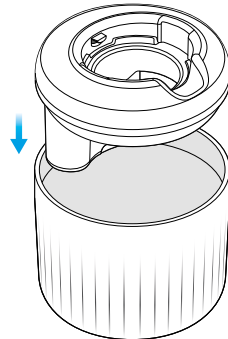
4. Insert the 9V battery, bottom side up, and align the male (positive) connector to the side of the screw lock.



5. Replace the battery cover and screw back to close.



6. Secure the lid back to the container.

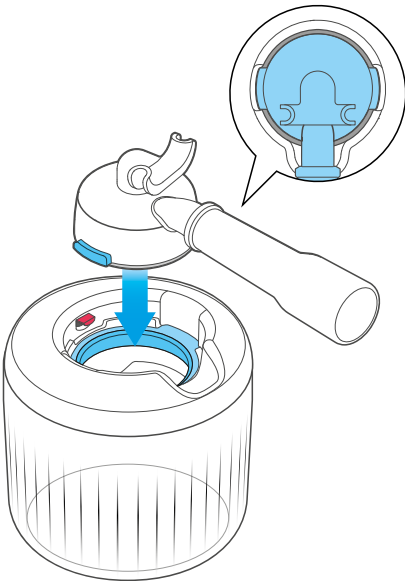




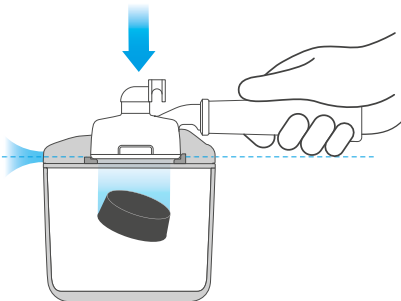
## Functions

### HOW TO USE THE PUCK SUCKER™

1. Ensure the Puck Sucker™ is stable and upright on a flat surface.
2. Place the portafilter into the Puck Sucker™ ensuring the portafilter touches the red switch.



3. Press and hold the portafilter horizontally straight and flat on the Puck Sucker™ lid until the coffee puck falls into the container.



### NOTE

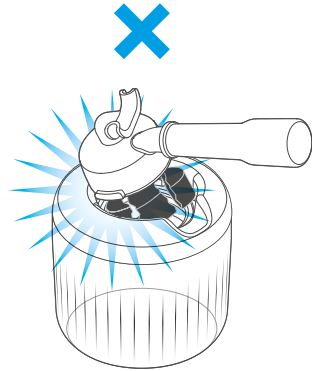
Avoid moving or wiggling the portafilter on the Puck Sucker™ as this will void the build of the vacuum. If the puck hasn't come out after 10 seconds, remove the portafilter and try again. This could be due to a lack of seal with the Puck Sucker™.

### NOTE

The machine has a continuous vacuum sound until the portafilter is removed.

### WARNING

Do not knock the portafilter on the Puck Sucker™ with sudden force.



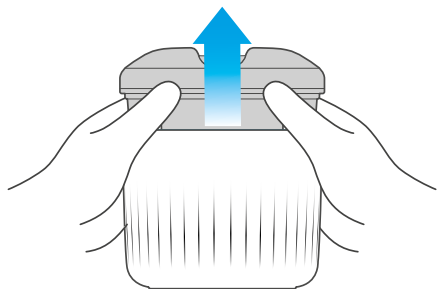




## Care & Cleaning

### HOW TO CLEAN THE CONTAINER

1. Separate the Puck Sucker™ lid from the container and dispose the coffee pucks into the bin. The easiest way to remove the vessel is by popping the top out with your thumbs on each side of the lid.



2. Once the container is completely empty, wash the container with warm soapy water and rinse thoroughly.



3. Using soft dry cloth, wipe the inside and the outside of the container thoroughly.

#### NOTE

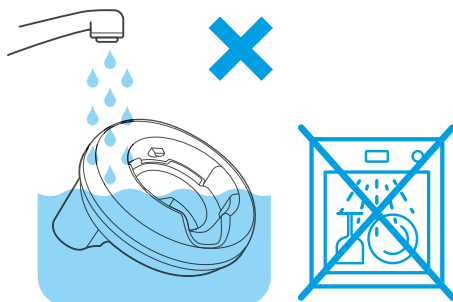
The container is dishwasher safe (top rack only).


### HOW TO CLEAN THE PUCK SUCKER™ LID

Use a damp cloth to wipe any coffee residues off the lid and dry thoroughly.

#### WARNING

- DO NOT wash the Puck Sucker™ lid under running water or clean by rinsing.



- DO NOT submerge the Puck Sucker™ lid in water or any other liquid.
- Keep the \*inlet and \*outlet port area clean and free from any coffee grounds or any particles to maintain good quality suction.  
\*refer to  **Components** section

### USED BATTERIES

- Exhausted batteries are to be removed from the appliance and safely disposed of.
- Refer to the safety section of this manual for cautions and warnings on handling and disposing of batteries.

#### NOTE

Depending on the daily usage, the battery life should be a minimum of 12 months.

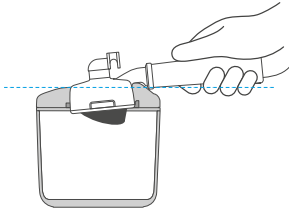


# Troubleshooting

## PROBLEM

## POSSIBLE CAUSES → EASY SOLUTIONS

Coffee puck does not come out.



Incomplete seal between the portafilter and the puck extractor.

→ Ensure there are no gaps between the portafilter and the seal to enable the vacuum to build. Check the portafilter handle is horizontal and centred on the extractor lid.

Extractor lid is not placed correctly on the vessel.

→ Ensure the extractor lid is firmly flat in place on the vessel. Check the seal is clean and not damaged.

Portafilter not kept on the extractor lid long enough.

→ Wait a few more seconds to ensure enough vacuum is being created.

Filter basket comes loose when using the puck extractor.

When using a dual wall filter basket, a greater vacuum will be built compared to using a single wall filter basket resulting the drop of the filter basket from the portafilter.

→ Keep the portafilter on the puck extractor for a maximum of 5 seconds and try again.

Filter basket catches (or stuck underneath) the switch.

Incorrect portafilter removing action.

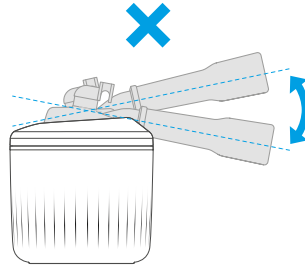
→ Lift the handle on the portafilter first, then take the portafilter out vertically.

Puck Sucker™ would not start.

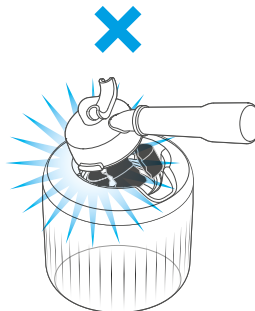
Puck Sucker™ may be low in battery.

→ Replace batteries.

Avoid moving or wiggling the portafilter on the Puck Sucker™.






Do not knock the portafilter on the Puck Sucker™ with sudden force.

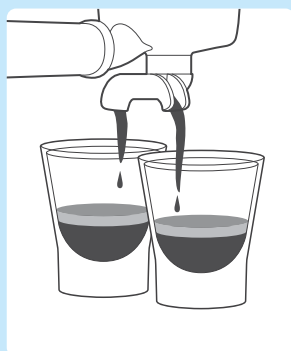


If the coffee puck came out partially, the suction in the PuckSucker™ has been consumed. The remaining bits of coffee ground will need to be removed manually.

Refer to coffee extraction tips below:

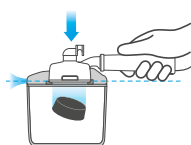






- Flow starts after 8-12 secs
- Flow slow like warm honey
- Crema is golden brown with a fine mousse texture
- Espresso is dark brown

AFTER EXTRACTION



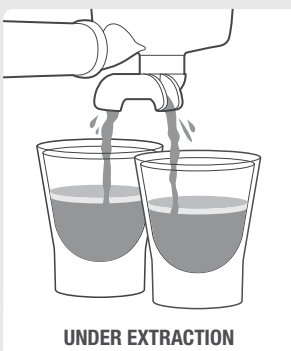
**REMOVE USED GRINDS**

Used grinds will form a coffee 'puck'. If the puck is wet, refer to the 'Under Extraction' section.






**RINSE FILTER BASKET**


Keep the filter basket clean to prevent blockages. Without ground coffee in the filter basket, lock the portafilter into the machine and run hot water through.





**UNDER EXTRACTION**

**ADJUST & RE-TEST**

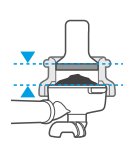
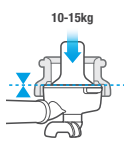
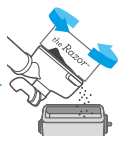



**OVER EXTRACTION**





**ADJUST & RE-TEST**

**Tamp** using 10-15kgs of pressure. The top edge of metal cap on the tamper should be level with the top of the filter basket AFTER tamping. Remove the dosing funnel from the portafilter then trim the puck to the right level using the Razor™ precision dose trimming tool.





ANZ

i

[www.breville.com](http://www.breville.com)



## Warranty

### 1 YEAR LIMITED PRODUCT WARRANTY

During the design and engineering of this product, quality was at the forefront of each material and component choice we made, which is why we proudly stand by it with a 1 Year Limited Product Warranty.

In Australia our goods come with guarantees that cannot be excluded under the Australian Consumer Law. You are entitled to a replacement or refund for a major failure and for compensation for any other reasonably foreseeable loss or damage. You are also entitled to have the goods repaired or replaced if the goods fail to be of acceptable quality and the failure does not amount to a major failure.

In New Zealand our goods come with guarantees that cannot be excluded under the Consumer Guarantees Act 1993.

So, as well as your statutory rights referred to above and any other rights and remedies you may have under any other laws relating to your Breville product, we also provide you with a Breville warranty. It's important to note that this warranty is valid only in the country of purchase. However, in other countries it is possible that other statutory warranties may still apply.

Breville's warranty for this product covers the repair or replacement (at Breville's discretion) if it's found to be defective due to faulty materials, workmanship, or function within the warranty period and will not extend the term of the original product warranty period.

To the extent permitted by law, this Breville Limited Product Warranty excludes liability for consequential loss or any other loss or damage caused to property or persons arising from any cause whatsoever. It excludes defects caused by the product not being used in accordance with instructions, by accidental damage, by misuse, or by being modified, altered, or tampered with by unauthorised persons. It excludes damage caused by insects or vermin and claims based on the presence of insects or vermin.

It also excludes breakables such as glass and ceramic items, consumable items such as those that require periodic replacement as part of the ordinary use, lack of care or maintenance of the product or as directed by the instruction booklet, minor cosmetic issues (including, without limitation, paint and coatings) and normal wear and tear, and does not cover the cost of claiming under the warranty or transporting the goods to and from the place of purchase.

For support with your Breville product or to make a claim under the Breville Warranty please contact our Breville Customer Care Team on:

**Australia: 1300 139 798**

**New Zealand: 0800 273 845**

Our Breville Customer Care Team can often diagnose and resolve most issues over the phone. In the event your product needs to be inspected or repaired, our Breville Customer Care Team will assist in arranging shipping at no charge by providing you a pre-paid label or nearest drop off point. Once the item is received and the nature of the fault is determined we'll advise what remedy you may be entitled to under the Breville Warranty. To obtain benefits under this Product Warranty, you will need to provide a proof of purchase in a form sufficient for us to verify your purchase, including the product, date of purchase and purchase price. We therefore urge you to retain this portion of the warranty card and the purchase receipt during the warranty period.

And if for any reason you wish to contact us in writing, please do so at:

#### **Breville Service Centre Australia**

Locked Bag 2000  
Botany NSW 1455

#### **Breville Service Centre New Zealand**

PO Box 99027  
Newmarket 1149, Auckland

Or click on Support at [www.breville.com](http://www.breville.com)

## **REGISTER YOUR WARRANTY AND GET MORE FROM YOUR PURCHASE.**

Warranty registration takes only a few minutes and ensures a record of your purchase and your warranty exists where it should. Registration also makes it faster and easier to get support or advice on any future question or issue you may have, and if you wish to, you can also select to be sent free recipes, tips, tricks and other relevant information.

Go to [www.breville.com](http://www.breville.com) and follow the prompts.

## **WHAT'S ON YOUR MIND?**

Our constant desire is to improve the quality and features of our wide range of home appliances. We welcome comments, ideas and constructive suggestions.

Go to [www.breville.com](http://www.breville.com) and follow the prompts.

# Breville Service Centre

## **Australian Customers**

**Phone:** 1300 139 798

**Web:** [www.breville.com](http://www.breville.com)

## **New Zealand Customers**

**Phone:** 0800 273 845

**Web:** [www.breville.com](http://www.breville.com)

# **Breville**<sup>®</sup>

**Master Every Moment**<sup>™</sup>

Breville, the Breville Logo, Barista Express and Temp Control are trademarks of Breville Pty Ltd ("Breville") and Breville's products are distributed in Australia and New Zealand under license.

Copyright Breville Pty. Ltd. 2022.

Due to continued product improvement, the products illustrated/photographed in this brochure may vary slightly from the actual product.