

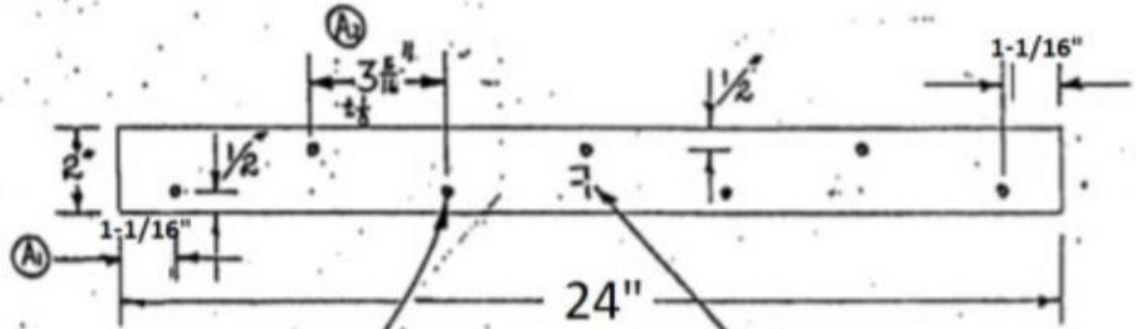
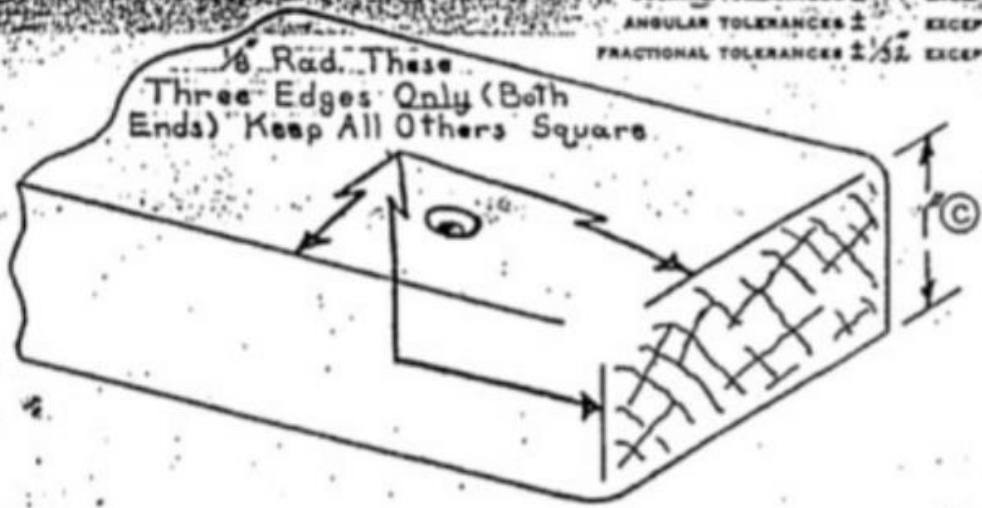
## **INSTALLATION INSTRUCTIONS FOR MAHOGANY REVERSIBLE PILOT SEAT**

1. Follow the uncrating instructions provided on the crate
2. Locate the three seat panels. The 2 rear panels have blocks. Position these panels in place. The smallest seat panel goes in between the center divider and the rear seat panel. Fasten panels with 4 hinges. 2 of the hinges fasten the front seat panel to the center divider and the other 2 hinges fasten the 2 rear seat panel together. This is so that the rear panels can be completely removed to gain access to storage underneath the seat. Just as an overview, the front of the seat is identified by having the smaller under seat storage compartment access.
3. Insert the backrest so that the side with no storage is facing forward.
4. The final step is installing the seat to the deck of your boat using the 2 included blocks (cleats). Below is a rough drawing of the two cleats (dimensions may vary) that are used to fasten the seat to the deck. Position the seat in the boat at the desired location. Use a pencil to trace the corner of the cleats onto the deck.

Next, remove the cleats from the seat and use the drawing below as a general guide to drill holes in the cleats. There are 7 holes per cleat in a staggered formation. Note that the location of these holes does not need to be exactly precise. If you are replacing a seat, use the old cleats as a template to drill new holes in your cleats. The recommended and easiest way to install the cleats onto the deck is by using 3M 5200 marine adhesive sealant to strengthen the bonds of the seat to the deck. It doubles as a sealant to prevent moisture from entering the foam core of the boat. Apply a small bead around the perimeter but not too close as it will squeeze out the sides when fastened to the deck. You can also apply a bead around each screw hole. Once applied, place the cleats into position on the deck using the guides marked earlier. Press down firmly so there is little to no gap between the deck and the cleat. Let cure overnight (if using fast cure 5200). At this point the cleats should be bonded to the deck with the 5200. Before fastening with the #14x2 screws and washers, drill pilot holes in the deck through the holes that are drilled in the cleats. Install screws/washers. Note that it is a good idea to coat the threads of the screws with 5200 to use as a sealant and further create a better bond.

DECIMAL TOLERANCES  $\pm$  EXCEPT AS NOTED  
 ANGULAR TOLERANCES  $\pm$  EXCEPT AS NOTED  
 FRACTIONAL TOLERANCES  $\pm 1/32$  EXCEPT AS NOTED

$1/8$  Rad. These  
 Three Edges Only (Both  
 Ends) Keep All Others Square.



(B) Note: Stamp mfg's ID  
 mark on bottom of cleat.  
 (F is only an example).

(A) (7) Holes, Drill  $7/32$ " dia. C's in K 82 to  
 $7/16$ " dia.