

INSTALLATION INSTRUCTIONS

BOSTON WHALER SUPER SPORT INTERIOR

- 1.) Locate port and starboard seat clamps and 1 seat. (Fig. 1)
- 2.) Position the rear seat in boat in desired location, Typically about 35 1/2" from inside wall of the transom (or 22" from splash well) for 13' hulls, and about 36" - 46" for 15' hulls. Please note that the rear seat location can be moved forward or backward depending on your preference. If you are replacing an old interior, you can simply position the rear seat in the same location.
- 3.) Place both seat clamps into the molded steps inside the hull, and over the rear seat. Be sure that the larger (starboard) seat clamp is on the right side.
- 4.) Once both seat clamps and seat are in position and square, drill pilot holes through the seat clamps into the fiberglass using a 1/8" drill bit. If you are replacing an old interior and wish to use existing holes, you can use your old seat clamps as a template for the location of the holes on the new seat clamps
- 5.) Using the provided #12 X 1 1/2" screws and finish washers, screw each seat clamp into hull. DO NOT tighten all the way at this time. (Fig. 2)
- 6.) Locate the rear seat backrest. (Fig. 3)
- 7.) Position the backrest so that the "ear" on the top of each side is sitting snug on the top of each seat clamp. Once in place, drill pilot holes through the backrest and into the angled mounting blocks on each seat clamp. Then secure with 4 #12 X 1 1/2" screws and finish washers. (Fig. 4)
- 8.) Locate molded storage compartment.
- 9.) Place molded storage compartment behind the rear backrest with the wood strip facing towards the back of the boat. Place storage compartment in general area. Tip: Find something the right thickness to place underneath the storage compartment to space it off of the deck. Once it is in position, screw the front plastic lip of the storage compartment to the back side of the backrest using the #6 X 1/2" pan screws. (Fig. 5)

Continued on next page....

Fig. 1

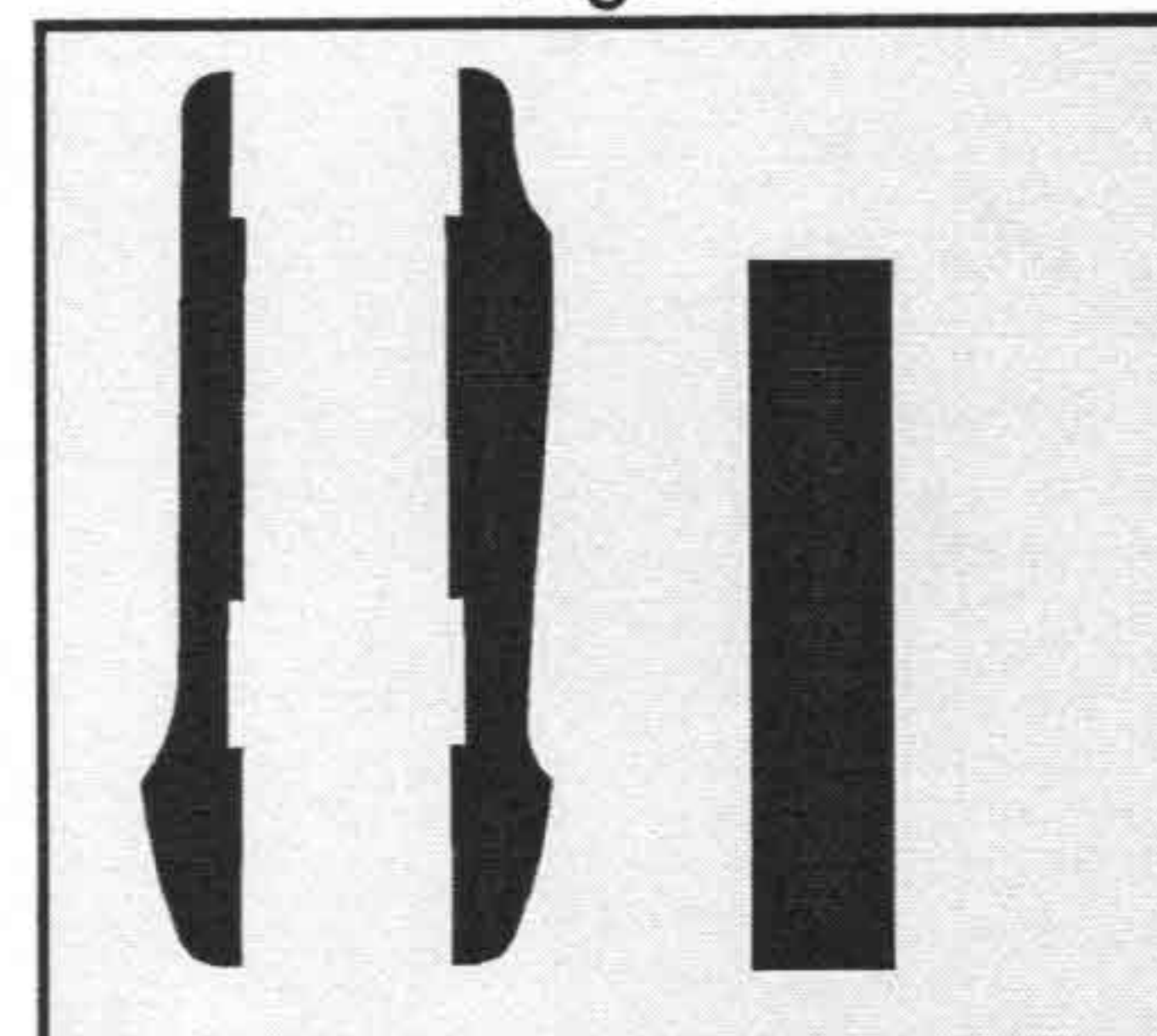


Fig. 2

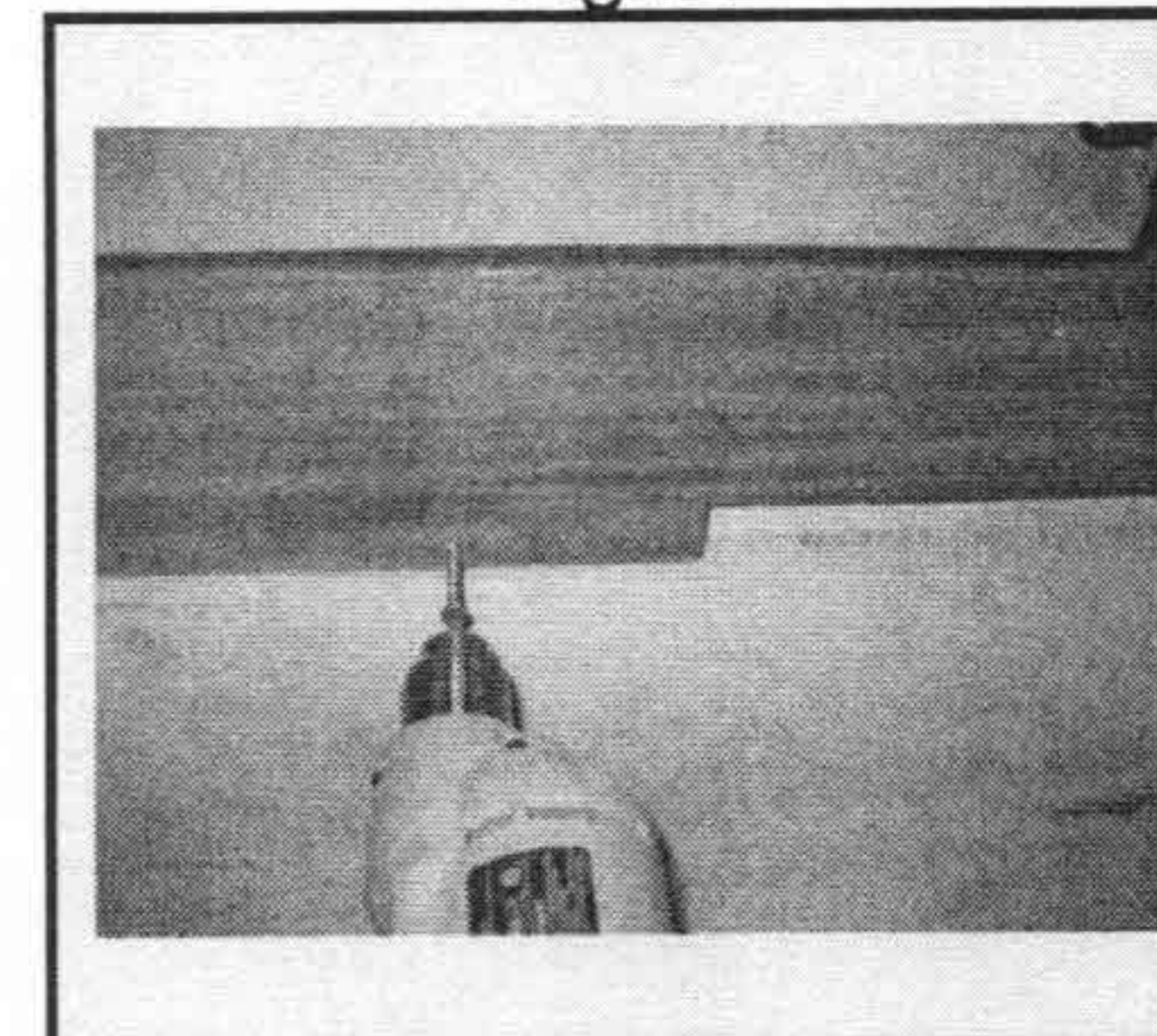


Fig. 3

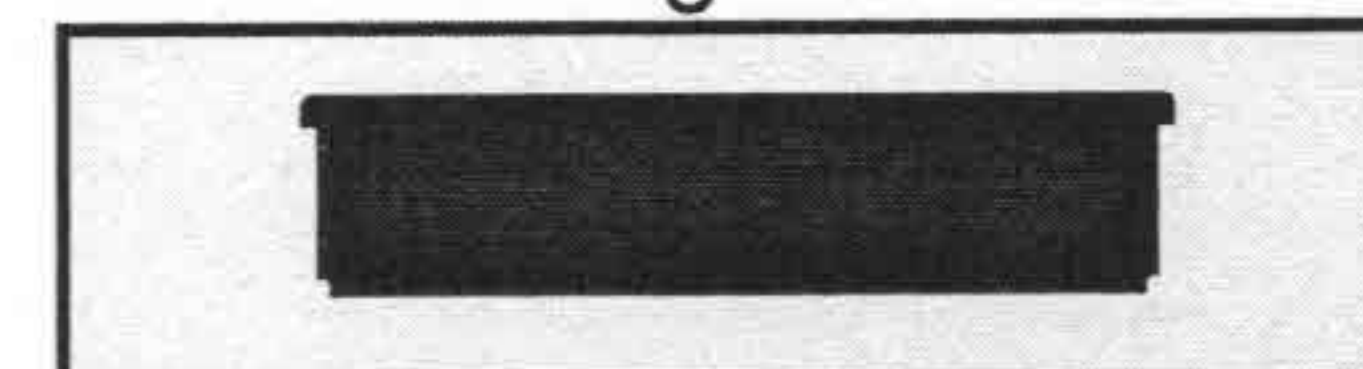


Fig. 4

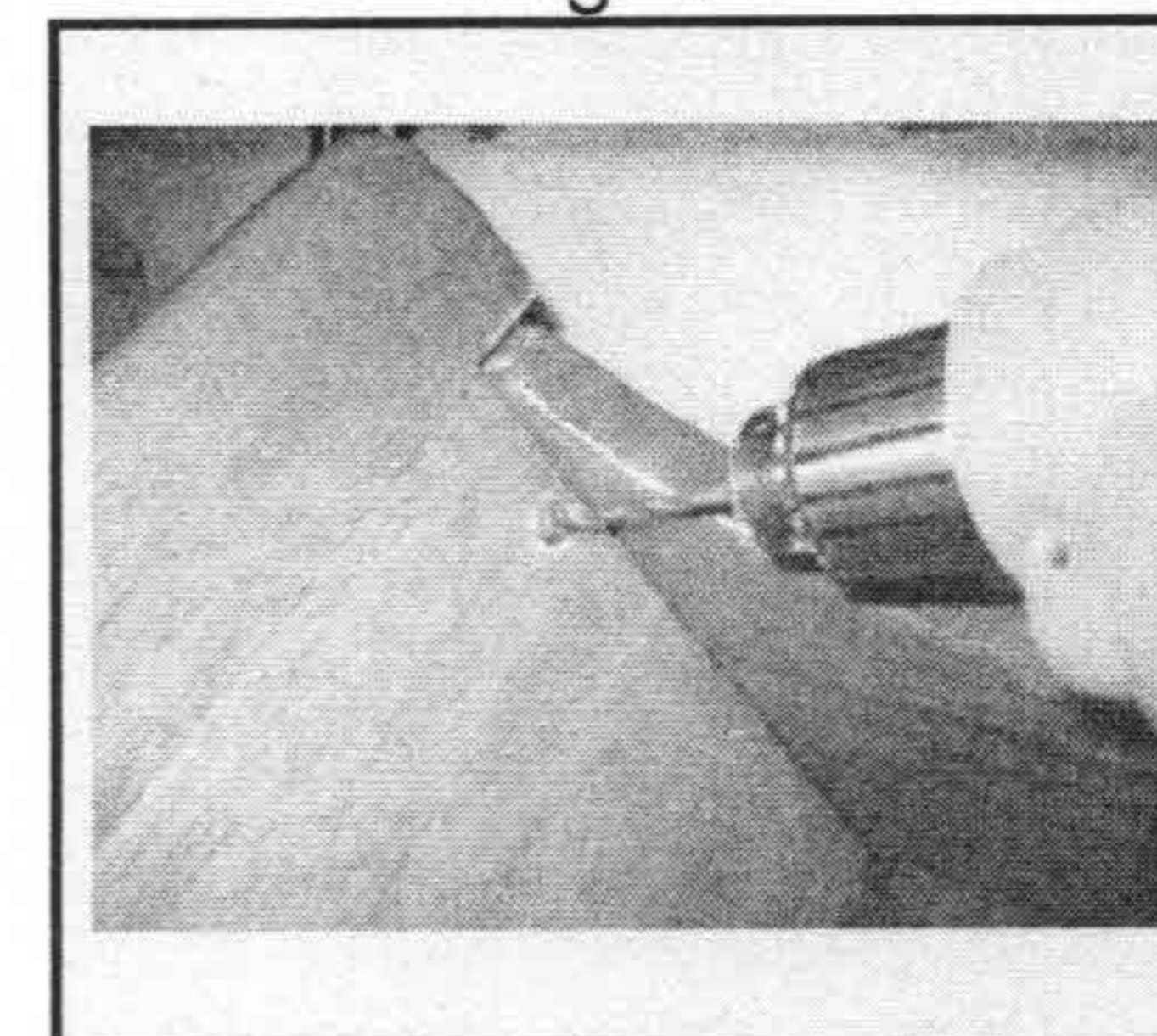
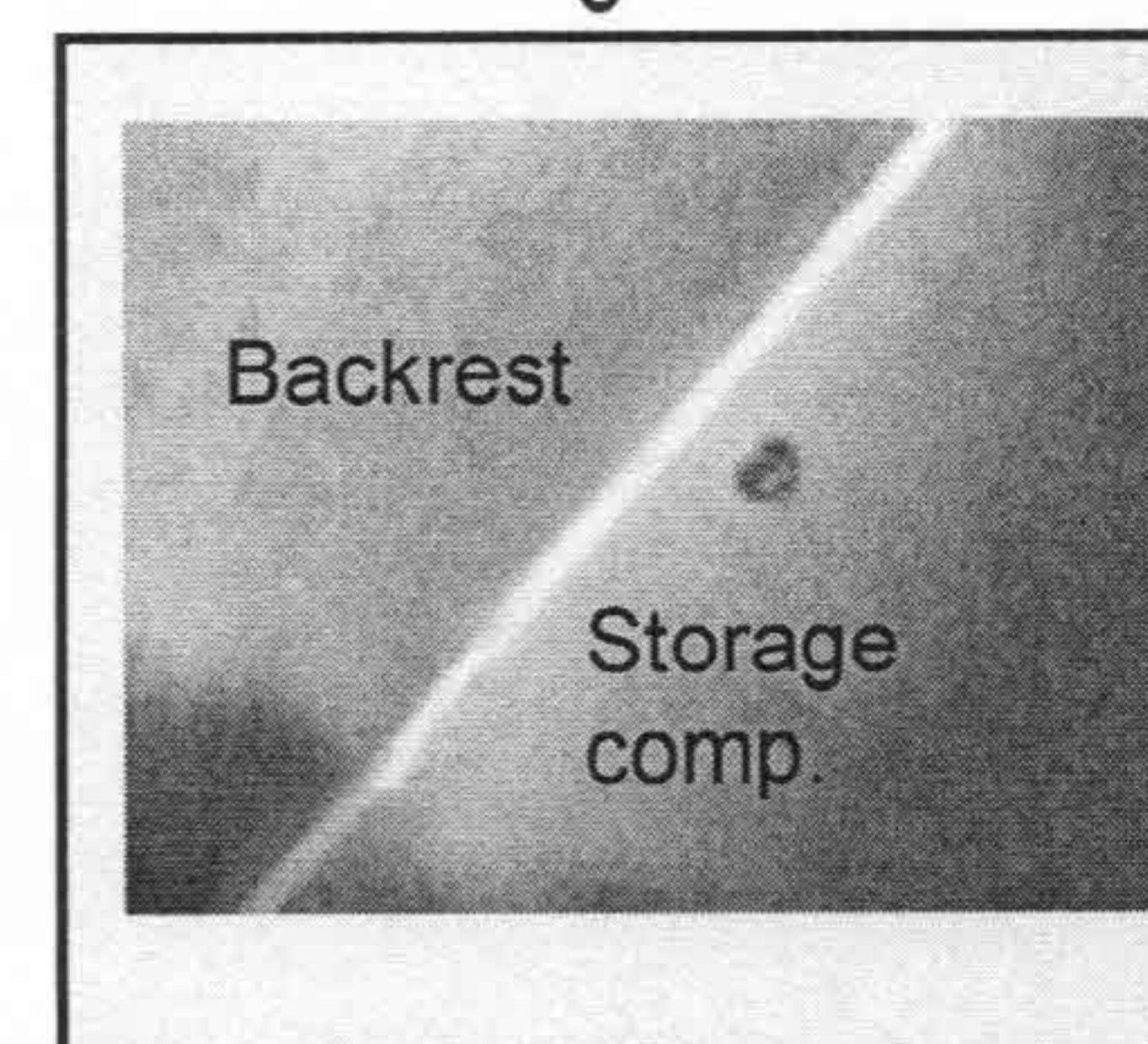
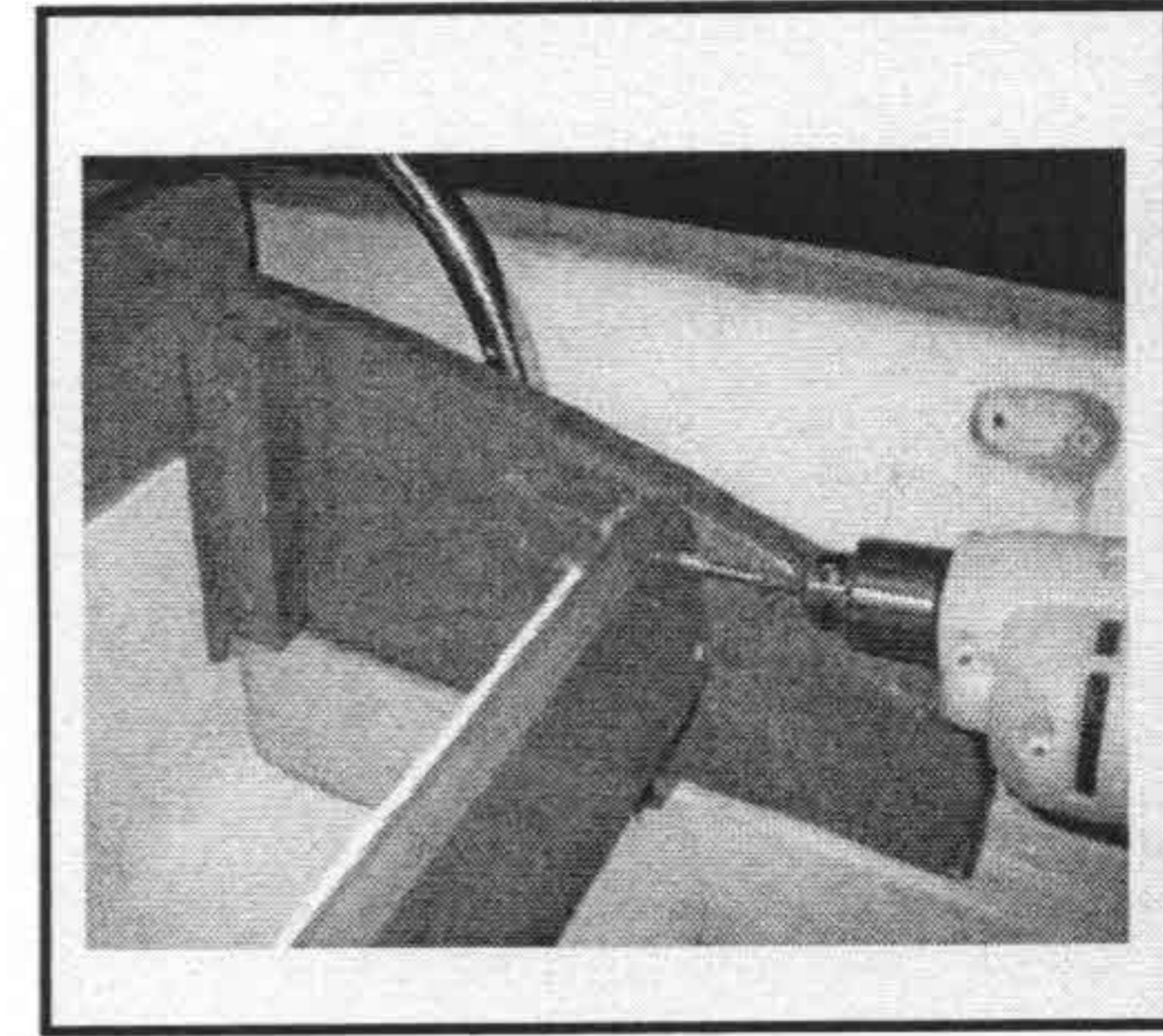


Fig. 5



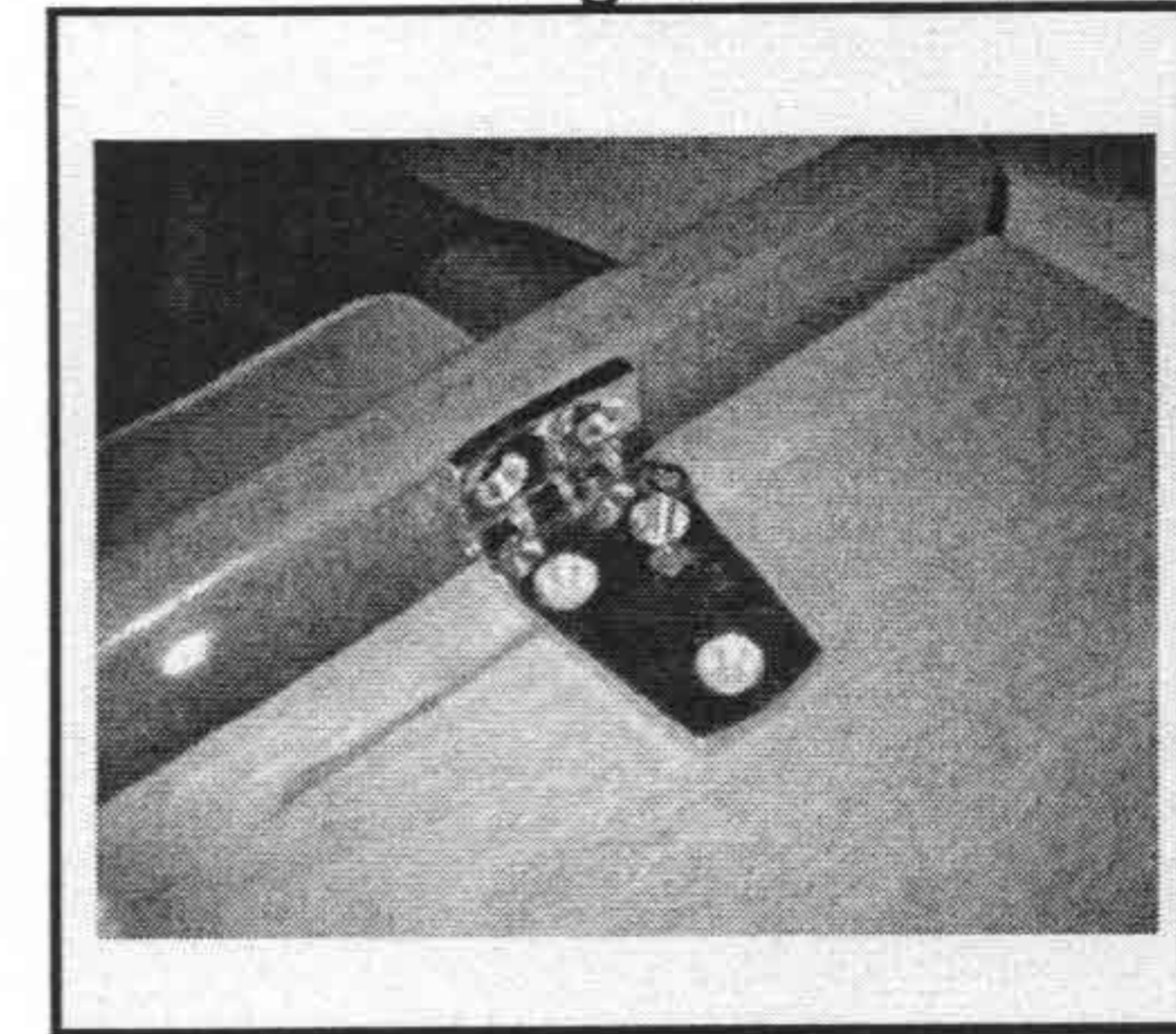
- 10.) It is now time to screw the back side of the storage compartment (w/strip of wood) to the rear blocks on the seat clamps. Using a 1/8" drill bit, drill 2 pilot holes on each side through the storage compartment wood strip into the block on the seat clamps. Make sure the top is flush with the block and Secure with #12 X 1 1/2" screws and finish washers. Tip: Secure w/ one screw on either side before screwing completely in. It helps to have someone hold it in place while you fasten it. (Fig. 6)

Fig. 6



- 11.) It is now okay to tightly fasten the seat clamps to the hull.

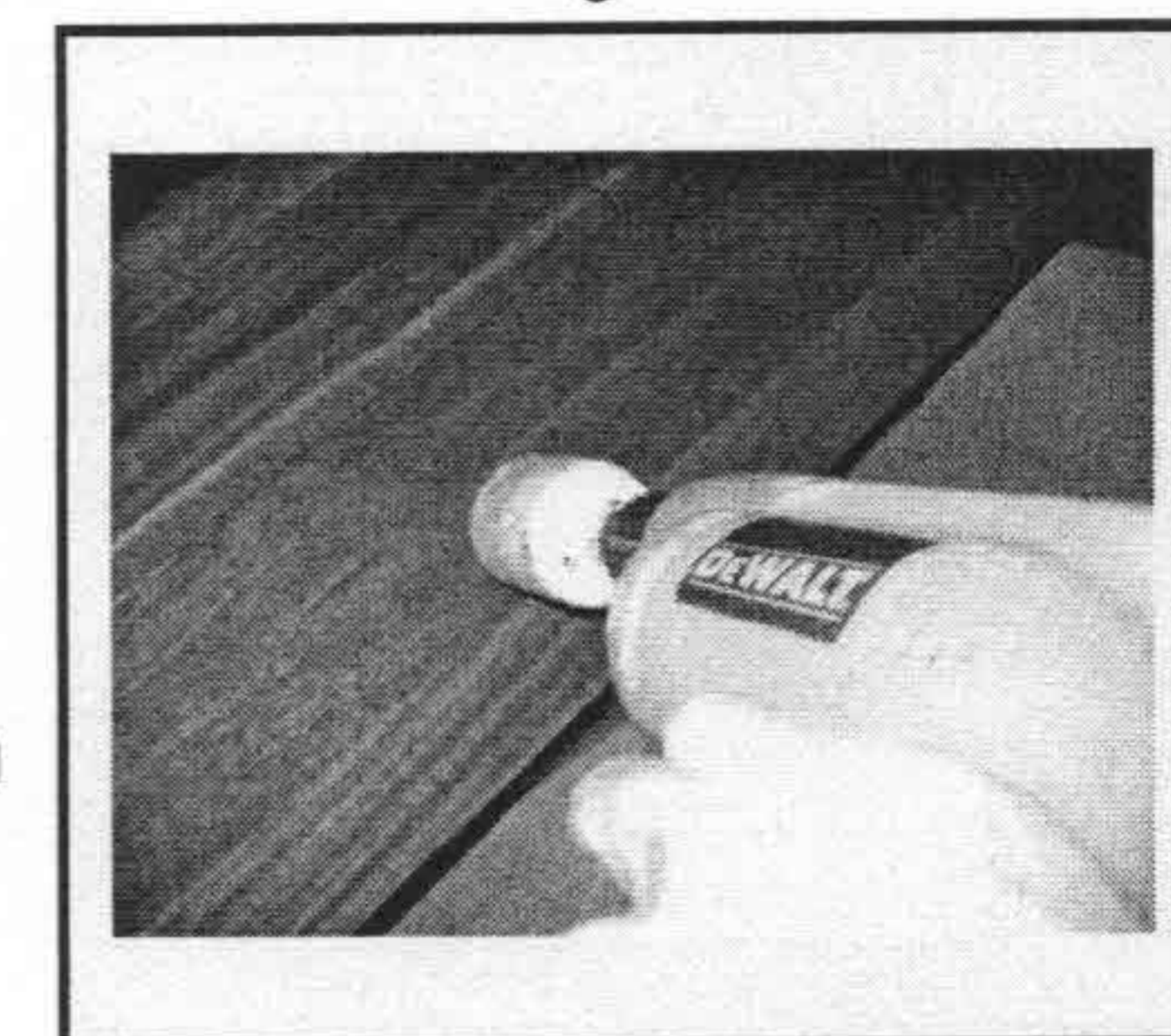
Fig. 7



- 12.) Locate the compartment cover and 3 hinges. Position the compartment cover on top of the molded compartment. Leave a 1/8" gap between the rear of the backrest and the cover. This will allow travel when opening and closing. Once in place, place all 3 hinges evenly spaced across the top of the compartment cover. Mark the location with a pen or pencil and then secure them with #10 X 3/4" screws. Secure the hinges on either side before securing the center hinge. (Fig. 7)

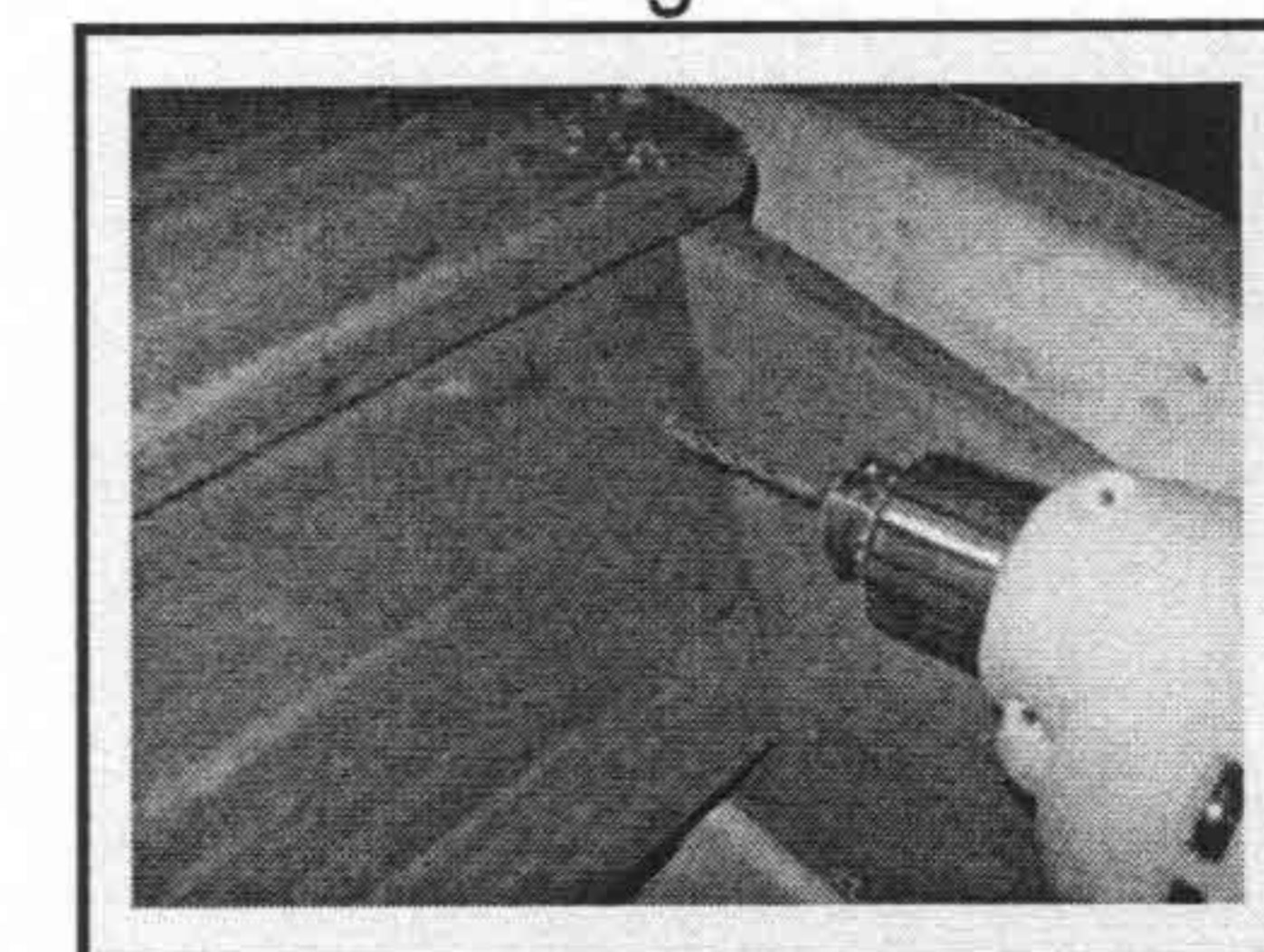
- 13.) The next step is rigging and mounting the console. This step requires a hole saw (giant drill bit with saw blade like teeth around the perimeter, these can be found at any hardware store) or a jig saw to cut the hole for the steering helm. Hole sizes will vary depending on the helm used. Refer to your steering system manual, there is usually a paper template included that will guide you in cutting the hole for the steering/helm. If using your existing steering system, you can use the old holes as a template for the new console. It is a good idea to varnish any raw edges after cutting. We use Z-spar Captains varnish.(Fig. 8)

Fig. 8



- 14.) Mounting the console: Once you have figured out the logistics of your steering and rigging it is now time to mount the console. Locate the 1" thick mahogany mounting block. Place console in position snugly against the starboard seat clamp. Take the mounting block and place it on the deck in position at the foot of the console between the deck and left side of console. Mark it's position with a pencil. Remove the console. Using a 9/64" drill bit, drill 3 pilot holes through the mounting block into the deck. Secure the block to the deck using 3 #14 X 2" screws. Tip: It is a good idea to use 3M 5200 marine adhesive in addition to the screws for waterproofing and better adhesion to the deck.

Fig. 9



- 15.) Place console snugly against the starboard seat clamp. Once in place drill 6 1/8" pilot holes through the console and into the blocks on the seat clamp. There should be 2 screws on each side of the console. (Dash, top, and front.) Once holes are drilled secure the console to the starboard seat clamp and to the mounting block installed in the previous step using #12 X 1 1/2" screws and finish washers. (Fig. 9, Fig. 10)

Fig. 10

