

ASSEMBLY INSTRUCTIONS

BOSTON WHALER 16'/17' RPS SEAT

Fig. 1



- 1.) Locate the left and right panels, these are the main outside panels and have 2 handle holes at the top. Locate the center divider panel, this panel is a flat panel with 2 square notches cut out of one end. This same end also contains a block of wood that is pre-attached. Once you have these 3 panels, turn the left and right main panels upside down. You might need a 2nd person to hold in place. Once these panels are upside down, make sure the front is facing towards you as shown in Fig. 1. (The front has the 2 angled blocks pre-attached to the main side pieces). Locate the center divider panel and insert it into the grooves found on the inside of each main side panel. Fasten into place with screws provided. Close up of this panel after it has been inserted can be found in Fig. 2

Fig. 2



- 2.) Locate bottom panel. The bottom panel has an **angled** block pre-attached at one end. Place bottom panel block-side down onto the bottom of the unit. **Make sure that the angled block on the bottom panel is lined up and flush with the angled blocks on the inside of each of the main side panels. Fig. 3 and detail closeup in Fig.4** Fasten in place with screws provided.

- 3.) Turn the unit over and locate the 2 remaining panels. The front panel has an angled cut at each end, and the rear panel has a block pre-attached at one end. Position the front and rear panels in place flush with the blocks found at the inside top of each main side panel. The front panel is placed against the **angled** blocks on the inside of each main side panel. The rear panel is placed at the opposite end. Fasten each panel in place with screws provided. These panels are shown assembled in Fig. 5.

Fig. 3



- 4.) Locate center divider cap block and position into place over the center divider and underneath the 2 bell shaped pieces of wood on the inside of each of the main side panels. **IMPORTANT: Make sure center divider cap is flush with the front face of the center divider panel.** Shown in Fig. 6 below. Fasten in place with screws provided.

Fig. 4



Fig. 5



Fig. 6



Fig. 7

- 6.) Locate the 3 seat panels. The front seat panel has no blocks on the bottom. The 2 rear panels have blocks. Position these panels in place as shown in Fig. 7. The smallest seat panel goes in between the center divider and the rear seat panel. Fasten panels with 4 hinges. 2 of the hinges fasten the front seat panel to the center divider panel and the other 2 hinges fasten the 2 rear seat panels together. This is so that the rear panels can be completely removed to gain access to under seat storage. Just as an overview, the front of the seat is identified by having the smaller under seat storage compartment.



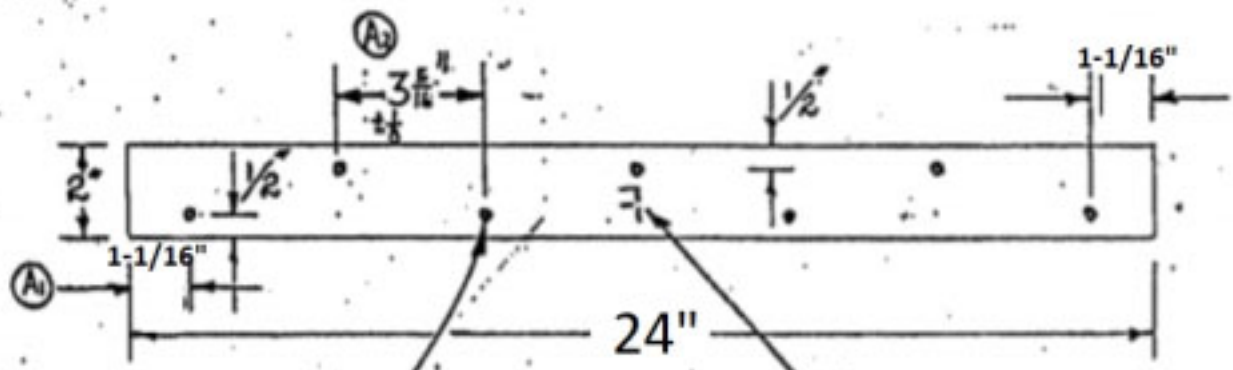
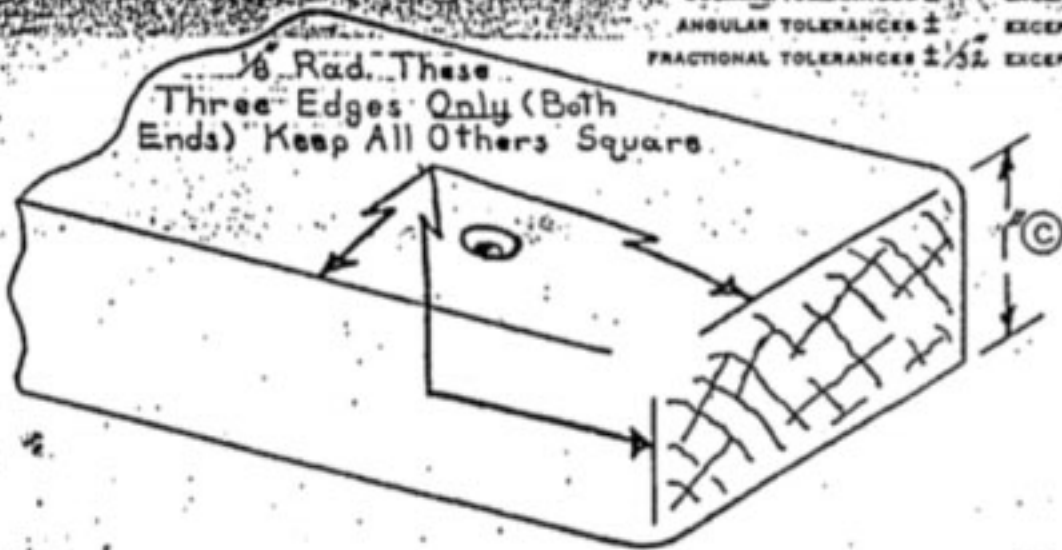
Fig. 8

- 7.) Insert the backrest so that the side with no storage access is facing forward. Fig. 8. *****IMPORTANT:** Cut and sand each plug before inserting it into screw hole so that the plug will not stick out further than the surface around it. Tap into place using a scrap block of wood and small hammer. Sand entire seat lightly and apply varnish as directed by the varnish mfg. Varnish can be brushed or sprayed on.



- 8.) The final step is installing the seat to the deck of your boat using the 2 included blocks (cleats). Varnish the blocks prior to installation. Place the seat on a flat surface and center each block on the inside of each leg. Then mark the hole locations onto the blocks using a marking tool or small drill bit. Drill pilot holes in the blocks and then fasten them to the seat legs with the smaller of the remaining screws and finish washers. You will be removing them again below so no need to fasten too tightly.
- 9.) On the next page is a rough drawing of the two cleats, (Dimensions may differ) that are used to fasten the seat to the deck. The screws used here are the largest screws (#14x2") along with washers.) With the cleats attached to the seat, position the seat in the boat at the desired location. Then use a pencil to trace the corners of the cleats onto the deck. Next, remove the cleats from the seat and use the drawing below as a general guide to drill holes in the cleats, there are 7 per cleat in a staggered pattern. Note that the location of these holes does not need to be exactly precise. If you are replacing a seat, use the old cleats as a template to drill holes in the new cleats. The recommended and easiest way to install the cleats onto the deck is by using 3M 5200 marine adhesive sealant to strenghten the bond of the seat to the deck. It doubles as a sealant to prevent moisture from entering the foam core of the boat. Apply a small bead around the perimeter but not too close as it will squeeze out the sides when fastened to the deck. You can also apply a bead around each hole. Once applied, place the cleats into position on the deck using the guides marked earlier. Press down firmly so there is little to no gap between the cleat and the deck. Let cure overnight. At this point the cleats should be bonded to the deck with 5200. Before fastening with #14 x 2" screws, drill pilot holes in the deck through the holes that are drilled in the cleats. Then fasten each screw with finish washers. Note that it is a good idea to coat the threads of the screws with 5200 to use as a sealant and better bond.

DECIMAL TOLERANCES \pm EXCEPT AS NOTED
 ANGULAR TOLERANCES \pm EXCEPT AS NOTED
 FRACTIONAL TOLERANCES $\pm 1/32$ EXCEPT AS NOTED



(B) Note: Stamp mfg's ID mark on bottom of cleat. (F is only an example).

(A) (7) Holes, Drill $7/32$ " dia. C's in K 82° to $7/16$ " dia.