

INSTALLATION INSTRUCTIONS

BOSTON WHALER 16'/17' CONSOLE

NOTE: Screw Size Key at Bottom of Page.

- 1.) Locate 3 console base panels as shown (3/4"). 1 left, 1 right and 1 front panel. (Fig. 1)

Fig. 1



- 2.) Assemble base panels as shown (Fig.2) and fasten with screws provided. Note that these panels are assembled with the bottom side up. This enables the top of the panels to remain flush while assembling. When the console base is right side up there should be a gap at the bottom of the front panel. See Fig. 3 for fastening detail.

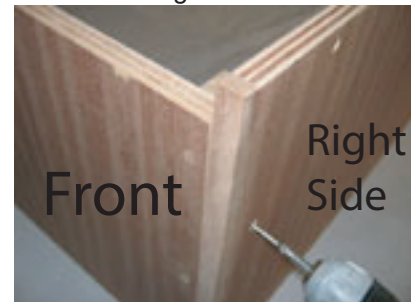
Fig. 2



- 3.) Locate the upper portion of the console, which comes pre-assembled. Then, locate the console shelf. (this shelf will be in the mid-section of the console once fully assembled).

Fasten the shelf to the bottom of the upper assembly. This is done first, as to not cover the pre-drilled holes. Once the upper assembly has the shelf attached to the bottom, proceed to the next step.

Fig. 3



Screw Size Key:

#8 x 1 1/4" - Step 2 through Step 6, Step 8

#8 x 1" - Step 7

#8 x 1 1/2" - Step 9

#12 x 1 1/2" - Step 10

#14 x 2" - Step 12

Continued on next page....

****Steps 4 and 5 have been cropped from the original document due to the upper assembly coming pre-assembled.****

6.) Now that the upper assembly has the shelf installed to the bottom, it's time to install the top panel that will be at the very top of the console. Locate this panel and set in place. **IMPORTANT** - before fastening any screws, locate the dash panel and use it as a spacer. There should be a gap here to accommodate the dash in the next step

7.) Fasten the dash panel to the top panel with screws provided. Fig. 9.

Tip: measure and cut instrument holes prior to installation

8.) Place the upper assembly on top of the lower assembly and fasten with screws provided. Fig. 9.

9.) Locate the windshield assembly and fasten into place from the bottom of the top panel with screws provided. Fig. 10. Locate the 3 lengths of quarter round trim. Plug all screw holes with provided mahogany plugs and glue into place with a good quality outdoor wood glue or epoxy.

IMPORTANT: Cut and sand each plug before inserting it into screw holes so that the plug will not stick out further than the surface around it Tap into place using a scrap block of wood and small hammer. Sand entire console lightly and apply varnish as directed by the varnish mfg. Varnish can be brushed or sprayed on.

10.) The final step is installing the console to the deck of your boat using the 2 blocks (cleats). Varnish the blocks prior to installation. Place the console on a flat surface and center the block on the inside of each leg. Then mark each of the 4 hole locations onto the blocks using a marking tool or small drill bit. Drill pilot holes in the blocks and then fasten them to the console legs with the smaller of the remaining screws (#12 x 1-1/2") and finish washers. You will be removing them again below so no need to fasten too tightly.

11.) On the next page is a rough drawing of the two cleats (Dimensions may differ) that are used to fasten the console to the deck. The screws used here are the largest #14 x 2") along with finish washers. With the cleats attached to the console, position the console in the boat in the desired location. Then use a pencil to trace the corners of the cleats onto the deck. Next, remove the cleats from the console and use the drawing as a general guide to drill holes in the cleats, there are 7 per cleat in a staggered pattern. Note that the location of these holes do not need to be exactly precise. If you are replacing a console, use the old cleats as a template to drill holes in the new cleats. The recommended and easiest way to install the cleats onto the deck is by using 3M 5200 marine adhesive sealant to strengthen the bond of the console to the deck. It doubles as a sealant to prevent moisture from entering the foam core of the boat. Apply a small bead around the perimeter but not too close as it will squeeze out the sides when fastened to the deck. You can also apply a bead around each hole. Once applied, place the cleats into position on the deck using the guides marked earlier. Press down firmly so there is little to no gap between the cleat and the deck. Let cure overnight.

12.) At this point the cleats should be bonded to the deck with 5200. Before fastening with #14 x 2" screws, drill pilot holes into the deck through the holes that are drilled in the cleats. Then fasten each screw with finish washers. Note that it is a good idea to coat the threads of the screws with 5200 to use as a sealant and better bond.

Fig. 8



Fig. 9

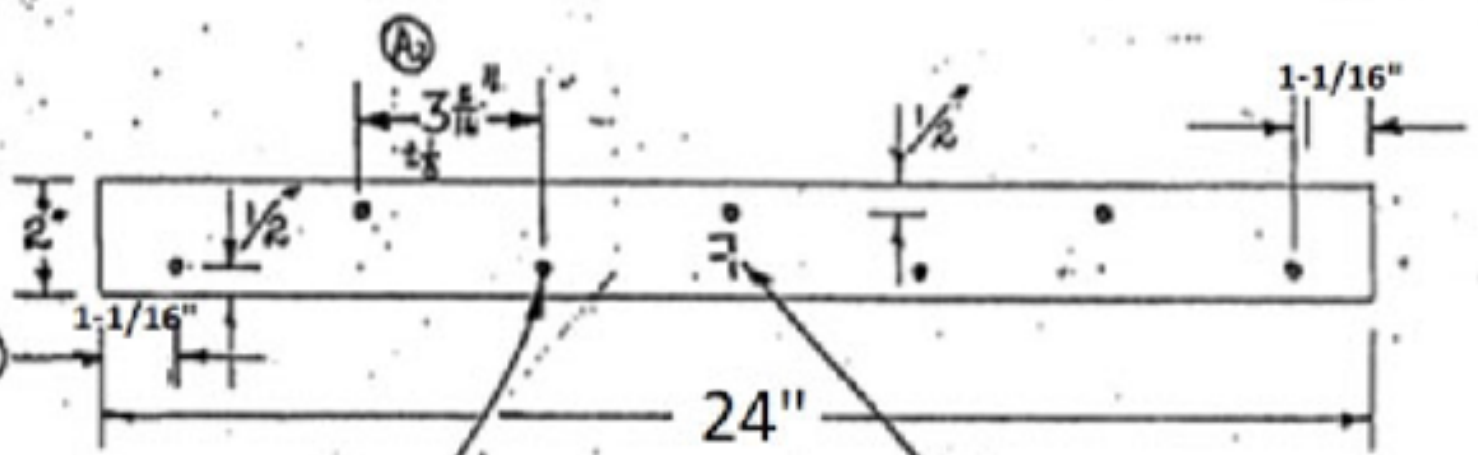
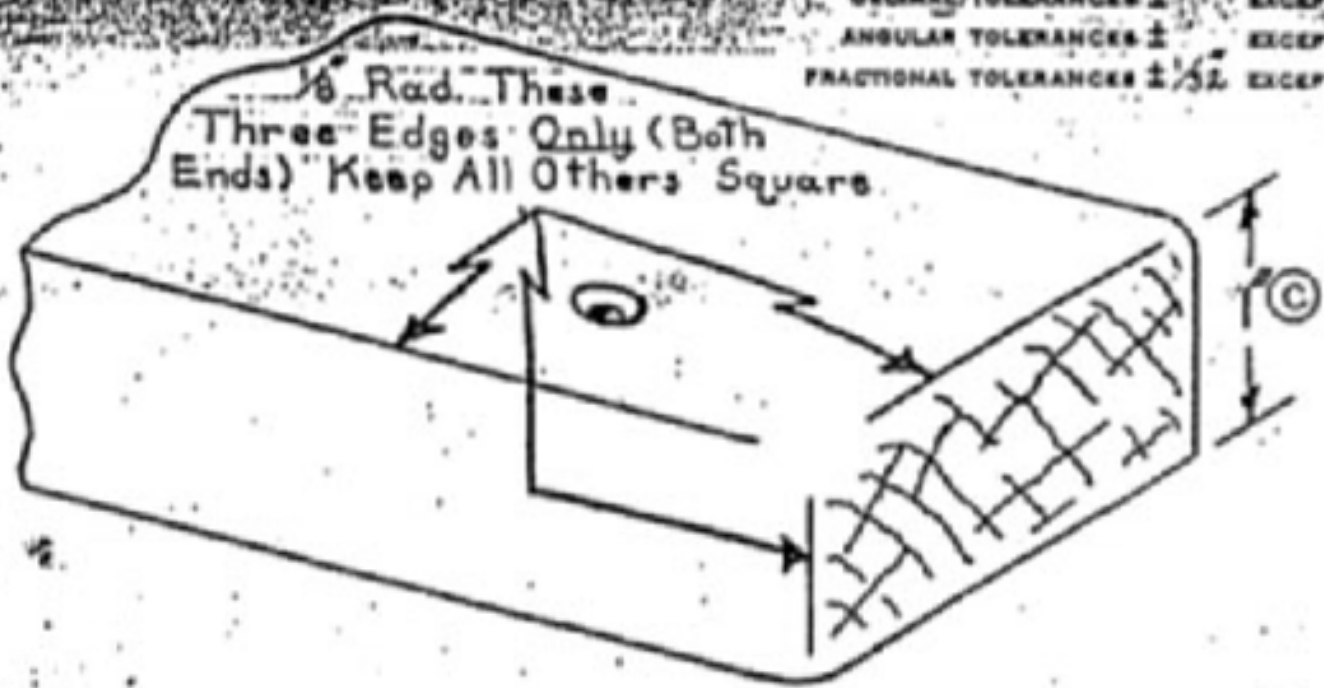


Fig. 10



Console Cleat Hole Diagram

DECIMAL TOLERANCES \pm EXCEPT AS NOTED
 ANGULAR TOLERANCES \pm EXCEPT AS NOTED
 FRACTIONAL TOLERANCES \pm $\frac{1}{32}$ EXCEPT AS NOTED



(B) Note: Stamp mfg's ID mark on bottom of cleat. (F is only an example).

(7) Holes, Drill 7/32" dia. C'sink 82° to 7/16" dia.