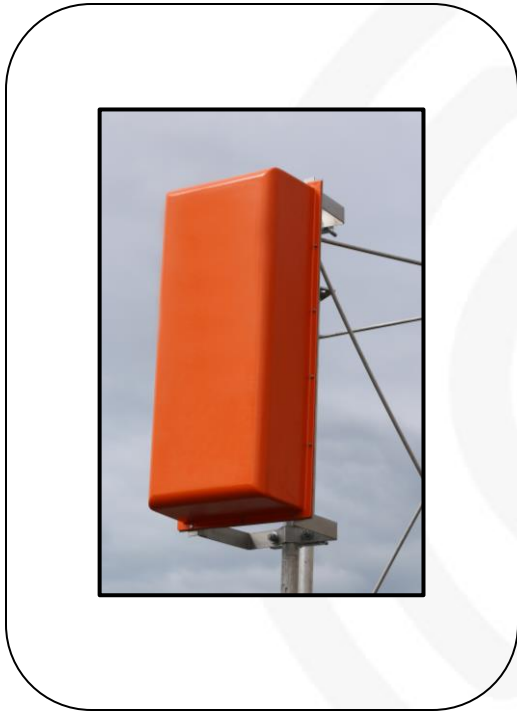


UHF Panel TV Antennas



Characteristics

- Circular Polarization
- Vertical Polarization
- Horizontal Polarization
- Elliptical Polarization
- Multi-Channel Systems
- Directional Systems
- Low, Medium, and High Power Ratings
- Broadband Systems

SPECIFICATIONS

<i>Model</i>	PA-UHF	
<i>Frequency</i>	UHF IV, V	<i>Connections Available:</i> EIA: 7/8", 1-5/8", 3-1/8" EIA, 4-1/16", 6-1/8"
<i>Input Power Rating</i>	1 KW - 40 KW	
<i>Polarization</i>	Circular, Horizontal, Vertical, Elliptical	
<i>VSWR</i>	1.17:1 or better	

Notes:

- > 5 KW ratings available upon engineering review.
- Includes standard mounting brackets and attachment hardware.
- Antenna weight and wind load are approximate values for a typical structure. Final design loads may vary for the specific application.