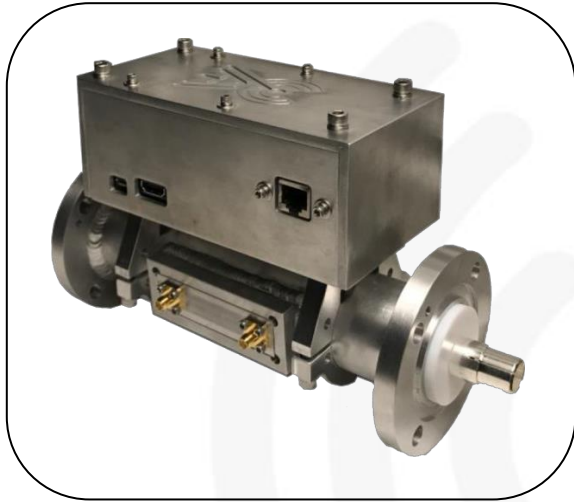


# SA Series RF Power Meters

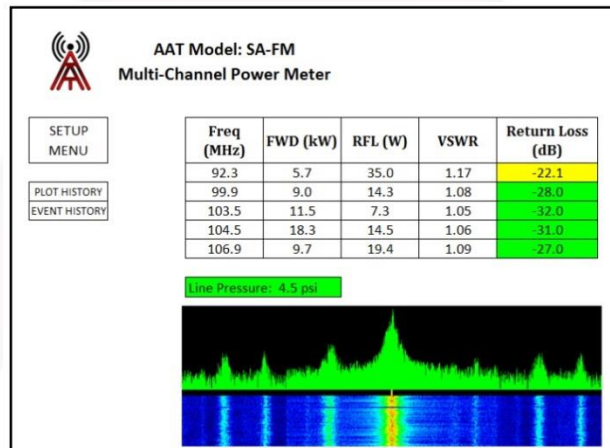


## Spectrum Analysis RF Power Measuring Systems

- FM, VHF & UHF Systems
- Multiple Frequency Power Measurements in real time using a single RF Power Meter
- Monitoring via HDMI, SNMP, and Ethernet
- User Defined Power Range, Modulation Type, and Channel Selection
- Customizable Thresholds

## SPECIFICATIONS

<i>Frequency</i>	50 MHz thru 900 MHz
<i>Power Rating</i>	500 W thru 170 KW
<i>EIA Flange Type</i>	Type N, 7/16" DIN, 7/8" EIA, 1-5/8" EIA, 3-1/8" EIA, 4-1/16" EIA, 6-1/8" EIA
<i>Directivity</i>	> 40 dB
<i>Coupling</i>	> 40 dB
<i>Power</i>	9 VDC



## MODELS

### Models

- PM-SA-FM
- PM-SA-VHFI
- PM-SA-VHFIII
- PM-SA-UHF