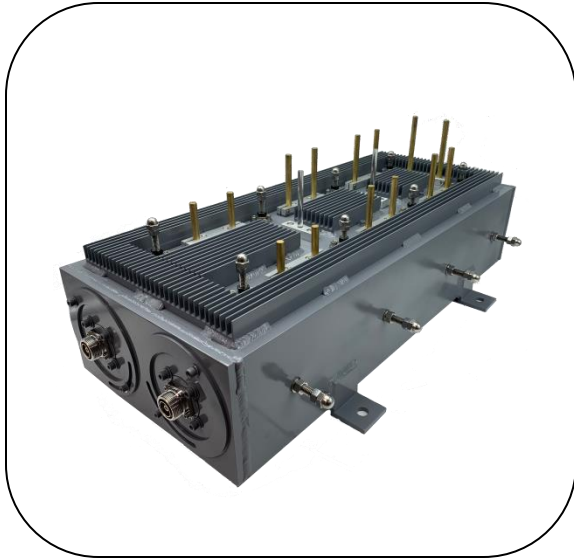


UHF Mask Filters

Features



- Frequency: 470 – 860 MHz
- Cross Coupled
- High Quality Aluminum, Brass, and Copper Materials
- Digital or Analog Systems
- No Finger Stock
- 6 MHz, 7 MHz, or 8 MHz Bandwidth
- Non-Critical and Critical Mask Type

SPECIFICATIONS

<i>Frequency</i>	470 – 860 MHz	<i>Connections Available:</i>	EIA Flange, 7/16" DIN
<i>Input Power Rating</i>	500 W – 24 kW		
<i>Insertion Loss</i>	< 0.8 dB Typical		
<i>Cooling Method</i>	Convection, Forced Air, Liquid		
<i>Rejection</i>	> 50 dB		
<i>Group Delay</i>	<350 ns		

STANDARD MODELS

<i>Model</i>	<i>Power Rating (digital)</i>	<i>6 Section System</i>		<i>8 Section System</i>	
		<i>Dimensions</i>	<i>Weight</i>	<i>Dimensions</i>	<i>Weight</i>
<i>UHF-M-500</i>	500 W	15" x 10" x 7"	20 lbs.	20" x 10" x 7"	28 lbs.
<i>UHF-M-1.5K</i>	1.5 kW	24" x 16" x 8"	80 lbs.	32" x 16" x 8"	110 lbs.
<i>UHF-M-3K</i>	3 kW	24" x 16" x 8"	85 lbs.	32" x 16" x 8"	115 lbs.
<i>UHF-M-6K</i>	6 kW	25" x 18" x 8"	100 lbs.	34" x 18" x 8"	135 lbs.
<i>UHF-M-12K</i>	12 kW	30" x 16" x 15"	220 lbs.	40" x 16" x 15"	295 lbs.
<i>UHF-M-24K</i>	24 kW	35" x 24" x 50"	480 lbs.	35" x 24" x 60"	650 lbs.

Operating Altitude Ratings are based on elevations up to 2800'. Derating begins after 2800'