

ZAC BROWN'S
Southern
GRIND

A woman with long hair in a ponytail, wearing safety glasses and a dark hoodie with a large graphic, is focused on working on a knife in a workshop. She is seated at a workbench cluttered with tools, including a vise, a bottle of oil, and various knife parts. In the background, there are shelves with organized drawers and other workshop equipment. The lighting is warm and focused on her work area.

ZAC BROWN'S
Southern
GRIND

SOUTHERN GRIND, Zac Brown's Georgia-based knife company, offers an unrivaled line of knives made by American hands, using high-quality materials and an unparalleled attention to detail. As a true knife enthusiast, Zac has always been interested in blade design and production. He created Southern Grind to be representative of what he believes knives should be—ruggedly dependable and highly functional, born from state-of-the-art technology, and quality that is second to none.



**“EVERYONE SHOULD
CARRY A KNIFE.
WE HAVE A KNIFE THAT FITS YOUR
PERSONALITY AND LIFESTYLE.”**

—ZAC BROWN

MADE IN AMERICA

We are proud that all of our knives are made in America, and that each one is assembled by hand, with care, and a passion for quality. The manufacturing tradition that built this country is alive at Southern Grind, and bringing those jobs back to America is one of our long-standing commitments.

A DEDICATION TO QUALITY

Southern Grind uses extremely high-quality materials and an unparalleled attention to detail. Our facility employs some of the best technology available, and is operated by individuals that have spent years honing their skills to deliver a level of craftsmanship that is unmatched. The result is an ever-growing line of products that all knife enthusiasts would proudly wield. There's not a single product that leaves our shop until it meets the high standards set forth by the man in charge.

FOLDING BLADES

Thousands of man hours go into the design and production of our line of folders, and it shows with their unmatched fit and finish. The Bad Monkey and Spider Monkey live up to their tactical pedigree with rugged dependability that leaves other EDCs far behind. We use the best materials in crafting our knives, like aircraft titanium, solid carbon fiber, and stainless steel. They are built to last, and we stand behind each one of them with a lifetime warranty.

BAD MONKEY
[PAGE 06]



BAD MONKEY CUSTOM
[PAGE 08]



QUILL
[PAGE 11]



SPIDER MONKEY
[PAGE 12]



PENGUIN
[PAGE 14]





BAD MONKEY [WITH EMERSON WAVE FEATURE]

The Original. Zac and the Southern Grind crew's own EDC. Built for those who like a 4" blade in their pocket.



PVD BLACK

TUMBLED SATIN



BLADE FINISH

Emerson Wave feature allows for one-handed opening.

TWILL-WEAVE CARBON-FIBER
Textured matte finish handle for a solid, all-conditions grip.

6AL4V Titanium lock and liner creates a secure storage base for our blades.

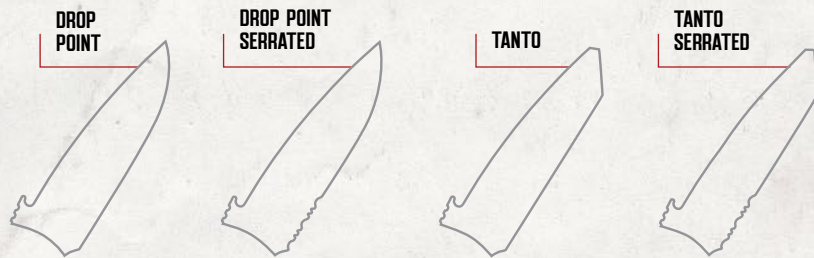
Short pocket clip ensures a secure pocket carry with minimal interference.



BLADE BREAKDOWN

LOCK & LINER: 6AL4V Titanium
GRIND: Conventional flat grind
BLADE STEEL: 14C-28N
HARDNESS: RC 59-61
OVERALL LENGTH: 9.25" (Drop Point)
9.125" (Tanto)
BLADE LENGTH: 4" (Drop Point)
3.875" (Tanto)
HANDLE LENGTH: 5.25"
WEIGHT: 4.97 oz.
BLADE THICKNESS: .130"

BLADE TYPE



DROP POINT BLADE TYPE



SG02040108 Drop Point Black Serrated w/ Carbon Fiber Handle



SG02030108 Drop Point Black w/ Carbon Fiber Handle



SG02040008 Drop Point Satin Serrated w/ Carbon Fiber Handle



SG02030008 Drop Point Satin w/ Carbon Fiber Handle

TANTO BLADE TYPE



SG02060108 Tanto Black Serrated w/ Carbon Fiber Handle



SG02050108 Tanto Black w/ Carbon Fiber Handle



SG02060008 Tanto Satin Serrated w/ Carbon Fiber Handle



SG02050008 Tanto Satin w/ Carbon Fiber Handle

DROP POINT BLADE TYPE

SKU	DESCRIPTION	MSRP
SG02040108	Bad Monkey Emerson Drop Point Black Serrated w/ Carbon Fiber Handle	\$264.95
SG02030108	Bad Monkey Emerson Drop Point Black w/ Carbon Fiber Handle	\$259.95
SG02040008	Bad Monkey Emerson Drop Point Satin Serrated w/ Carbon Fiber Handle	\$254.95
SG02030008	Bad Monkey Emerson Drop Point Satin w/ Carbon Fiber Handle	\$249.95

TANTO BLADE TYPE

SKU	DESCRIPTION	MSRP
SG02060108	Bad Monkey Emerson Tanto Black Serrated w/ Carbon Fiber Handle	\$264.95
SG02050108	Bad Monkey Emerson Tanto Black w/ Carbon Fiber Handle	\$259.95
SG02060008	Bad Monkey Emerson Tanto Satin Serrated w/ Carbon Fiber Handle	\$254.95
SG02050008	Bad Monkey Emerson Tanto Satin w/ Carbon Fiber Handle	\$249.95

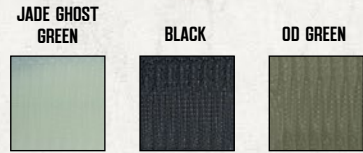


BAD MONKEY [CUSTOM]

The perfect EDC for members of the military and law enforcement. Solid G10 handles offer comfort and durability in the hand with an all-conditions grip.



BLADE FINISH



HANDLE STYLE

Kinetic opening capability.



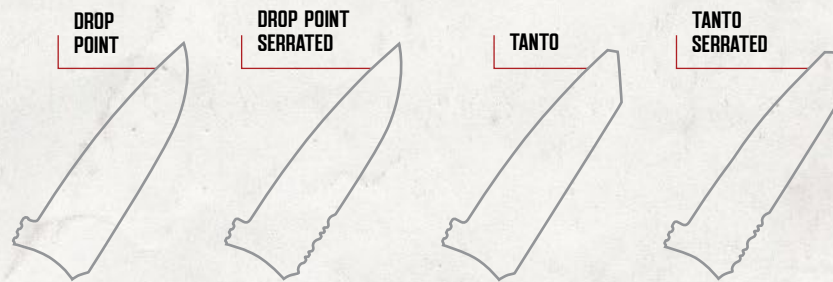
Solid G10 handle with textured matte finish for a solid, all-conditions grip.

6AL4V Titanium lock and liner creates a secure storage base for our blades.

BLADE BREAKDOWN

LOCK & LINER: 6AL4V Titanium
GRIND: Conventional flat grind
BLADE STEEL: 14C-28N
HARDNESS: RC 59-61
OVERALL LENGTH: 9.25" (Drop Point)
9.125" (Tanto)
BLADE LENGTH: 4" (Drop Point)
3.875" (Tanto)
HANDLE LENGTH: 5.25"
WEIGHT: 4.97 oz.
BLADE THICKNESS: .130"

BLADE TYPE



DROP POINT BLADE TYPE



SG03040201 Drop Point Serrated Black w/ Black Handle



SG03030201 Drop Point Black w/ Black Handle



SG03030001 Drop Point Satin w/ Black Handle



SG03040204 Drop Point Black Serrated w/ Jade Ghost Green Handle



SG03030204 Drop Point Black w/ Jade Ghost Green Handle



SG03030004 Drop Point Satin w/ Jade Ghost Green Handle



SG03040203 Drop Point Black Serrated w/ OD Green Handle



SG03030203 Drop Point Black w/ OD Green Handle



SG03030003 Drop Point Satin w/ OD Green Handle

DROP POINT BLADE TYPE

SKU	DESCRIPTION	MSRP
SG03040201	Bad Monkey Drop Point Black Serrated w/ Black Handle	\$264.95
SG03030201	Bad Monkey Drop Point Black w/ Black Handle	\$259.95
SG03030001	Bad Monkey Drop Point Satin w/ Black Handle	\$249.95
SG03040204	Bad Monkey Drop Point Black Serrated w/ Jade Ghost Green Handle	\$264.95
SG03030204	Bad Monkey Drop Point Black w/ Jade Ghost Green Handle	\$259.95
SG03030004	Bad Monkey Drop Point Satin w/ Jade Ghost Green Handle	\$249.95
SG03040203	Bad Monkey Drop Point Black Serrated w/ OD Green Handle	\$264.95
SG03030203	Bad Monkey Drop Point Black w/ OD Green Handle	\$259.95
SG03030003	Bad Monkey Drop Point Satin w/ OD Green Handle	\$249.95



QUILL

An elegant everyday carry for a more style-oriented crowd.

TANTO BLADE TYPE



SG03060201 Tanto Black Serrated w/ Black Handle



SG03050201 Tanto Black w/ Black Handle



SG03050001 Tanto Satin w/ Black Handle



SG03060204 Tanto Black Serrated w/ Jade Ghost Green Handle



SG03050204 Tanto Black w/ Jade Ghost Green Handle



SG03050004 Tanto Satin w/ Jade Ghost Green Handle



SG03060203 Tanto Black Serrated w/ OD Green Handle



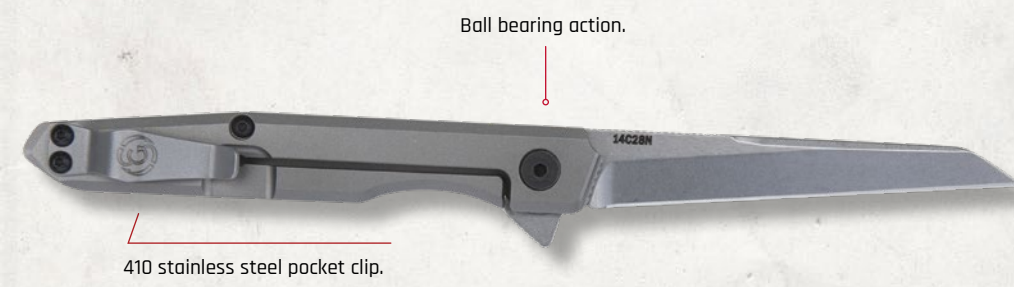
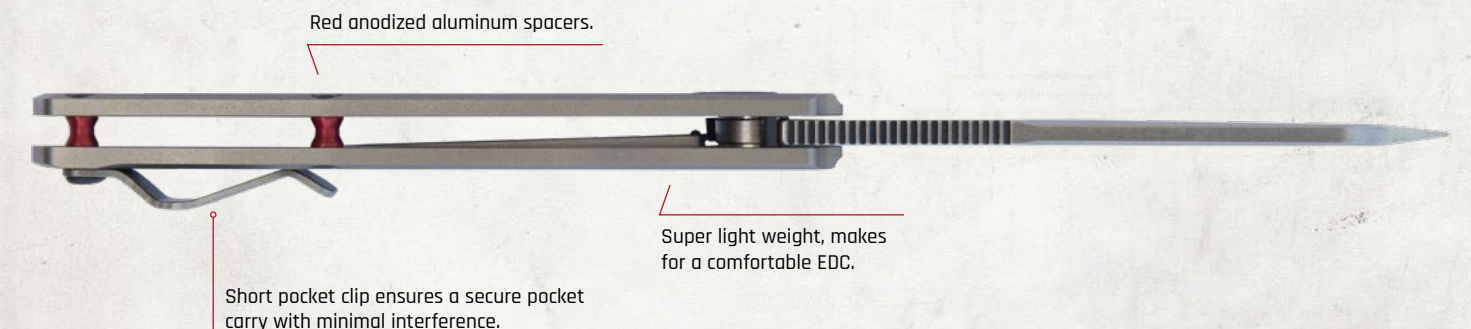
SG03050203 Tanto Black w/ OD Green Handle



SG03050003 Tanto Satin w/ OD Green Handle

TANTO BLADE TYPE

SKU	DESCRIPTION	MSRP
SG03060201	Bad Monkey Tanto Black Serrated w/ Black Handle	\$264.95
SG03050201	Bad Monkey Tanto Black w/ Black Handle	\$259.95
SG03050001	Bad Monkey Tanto Satin w/ Black Handle	\$249.95
SG03060204	Bad Monkey Tanto Black Serrated w/ Jade Ghost Green Handle	\$264.95
SG03050204	Bad Monkey Tanto Black w/ Jade Ghost Green Handle	\$259.95
SG03050004	Bad Monkey Tanto Satin w/ Jade Ghost Green Handle	\$249.95
SG03060203	Bad Monkey Tanto Black Serrated w/ OD Green Handle	\$264.95
SG03050203	Bad Monkey Tanto Black w/ OD Green Handle	\$259.95
SG03050003	Bad Monkey Tanto Satin w/ OD Green Handle	\$249.95



BLADE BREAKDOWN

- LOCK & LINER: 6AL4V Ti
- GRIND: Flat Grind
- BLADE STEEL: 14C28N
- HARDNESS: 60-62
- OVERALL LENGTH: 7.06"
- BLADE LENGTH: 3"
- HANDLE LENGTH: 4.06"
- WEIGHT: 1.9 oz.
- BLADE THICKNESS: .121"

ORDER INFORMATION

SKU	DESCRIPTION	MSRP
SG08050011	Quill Satin with Titanium Handle	\$269.95



SPIDER MONKEY

Little brother of the Bad Monkey, with all the tactical prowess in a smaller carry size.



BLADE FINISH

PVD BLACK TUMBLED SATIN STAINLESS DAMASCUS

HANDLE STYLE

CARBON FIBER COPPER

Kinetic opening capability.

6AL4V Titanium lock and liner.

Short pocket clip ensures a secure pocket carry with minimal interference.

BLADE TYPE

DROP POINT DROP POINT SERRATED TANTO TANTO SERRATED

BLADE BREAKDOWN

LOCK & LINER: 6AL4V Titanium
 GRIND: Conventional flat grind
 BLADE STEEL: S35VN
 HARDNESS: RC 58-59
 OVERALL LENGTH: 7.4375"
 BLADE LENGTH: 3.25"
 HANDLE LENGTH: 4.1875"
 WEIGHT: 3.2 oz.
 BLADE THICKNESS: .130"

DROP POINT BLADE TYPE

SKU	DESCRIPTION	MSRP
SG06040208	Spider Monkey Drop Point Black Serrated w/ Carbon Fiber Handle	\$234.95
SG06030208	Spider Monkey Drop Point Black w/ Carbon Fiber Handle	\$229.95
SG06030008	Spider Monkey Drop Point Satin w/ Carbon Fiber Handle	\$219.95
SG06030808	Spider Monkey Drop Point Damascus w/ Carbon Fiber Handle	\$489.95
SG06030809	Spider Monkey Drop Point Damascus w/ Copper Handle	\$539.95
SG06030014	Spider Monkey Drop Point Satin w/ Copper Handle	\$254.95
SG06030214	Spider Monkey Drop Point Black w/ Copper Handle	\$279.95

TANTO BLADE TYPE

SKU	DESCRIPTION	MSRP
SG06060208	Spider Monkey Tanto Black Serrated w/ Carbon Fiber Handle	\$234.95
SG06050208	Spider Monkey Tanto Black w/ Carbon Fiber Handle	\$229.95
SG06050008	Spider Monkey Tanto Satin w/ Carbon Fiber Handle	\$219.95
SG06050014	Spider Monkey Tanto Satin w/ Copper Handle	\$254.95
SG06050214	Spider Monkey Tanto Black w/ Copper Handle	\$279.95

DROP POINT BLADE TYPE



SG06040208 Drop Point Black Serrated w/ Carbon Fiber Handle



SG06030208 Drop Point Black w/ Carbon Fiber Handle



SG06030008 Drop Point Satin w/ Carbon Fiber Handle



SG06030808 Drop Point Damascus w/ Carbon Fiber Handle



SG06030809 Drop Point Damascus w/ Copper Handle



SG06030014 Drop Point Satin w/ Copper Handle



SG06030214 Drop Point Black w/ Copper Handle

TANTO BLADE TYPE



SG06060208 Tanto Black Serrated w/ Carbon Fiber Handle



SG06050208 Tanto Black w/ Carbon Fiber Handle



SG06050008 Tanto Satin w/ Carbon Fiber Handle



SG06050014 Tanto Satin w/ Copper Handle



SG06050214 Tanto Black w/ Copper Handle



PENGUIN

The Penguin is perfect for the flipper lover. With a solid titanium frame lock and clip, S90V blade steel and a patent pending multi-track bearing system, the Penguin makes a truly legit EDC or show knife.

TUMBLED SATIN

STAINLESS DAMASCUS



BLADE FINISH

Patent pending pivot bearing system.

6AL4V TITANIUM



CONVENTIONAL FLAT GRIND

Flipper design makes for a more secure finger choil.

Solid milled titanium pocket clip.

BLADE BREAKDOWN

LOCK & LINER: 6AL4V Titanium
GRIND: Conventional flat grind
BLADE STEEL: S90V
HARDNESS: RC 59-60
OVERALL LENGTH: 8.125"
BLADE LENGTH: 3.5"
HANDLE LENGTH: 4.625"
WEIGHT: 4.5 oz.
BLADE THICKNESS: .130"



SG09030011-01 Penguin Drop Point Satin w/ Titanium Handle Rev. 01



SG09030008 Penguin Drop Point Damascus w/ Titanium Handle

ORDER INFORMATION

SKU	DESCRIPTION	MSRP
SG09030011-01	Penguin Drop Point Satin w/ Titanium Handle Rev. 01	\$379.95
SG09030008	Penguin Drop Point Damascus w/ Titanium Handle	\$519.95

FIXED BLADES

Our line of fixed blades can bare more than their teeth with rigorously-tested designs that function at the highest level. Some are cut from work hardened steel with a lifetime of strength to draw upon, while others use cryogenic quenching to create their extreme durability. Whatever the source of these class-leading qualities, two things can be certain: a Southern Grind blade will perform and do it for a lifetime.

THE VERMIN
[PAGE 16]



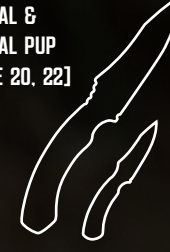
RHINO
[PAGE 17]



GRANDDADDY
[PAGE 18]



JACKAL &
JACKAL PUP
[PAGE 20, 22]



WASP
[PAGE 24]





THE VERMIN

Easily hidden in plain sight with a small, concealed design. Perfect for the second carry.



RHINO

The tough, thick, single-horn inspired design makes for the most powerful flashlight and multi-tool knife ever.

SMALL AND COMPACT

Overall Length: 4.875" / Blade Length: 2.25"

8670M High Carbon Steel blade with a full-tang and conventional Flat Grind.

Comes with a formed black Kydex sheath and 48" length paracord necklace.



BLADE BREAKDOWN

- HANDLE:** Skeletonized
- GRIND:** Conventional flat grind
- BLADE STEEL:** 8670M high carbon steel
- BLADE FINISH:** PVD Black
- HARDNESS:** RC 58-59
- OVERALL LENGTH:** 4.875"
- BLADE LENGTH:** 2.25"
- HANDLE LENGTH:** 2.625"
- WEIGHT:** 1.5 oz
- BLADE THICKNESS:** .110"

Skeletonized handle for reduced weight.

BLADE TYPE

DROP POINT



TANTO



SG04030100 The Vermin Drop Point Black w/ Black Kydex Sheath

SG04050100 The Vermin Tanto Black w/ Black Kydex Sheath

PELICAN CASE

Packaged with Pelican case 1170 that is watertight, crushproof, and dust proof.



Multi wrench with 4 standard sizes.



INTEGRATED MULTI-TOOL

Designed with glass break, pry bar, screwdriver, and bottle opener.

BLADE BREAKDOWN

- HANDLE:** Custom G10 with OLIGHT 400 lumens flashlight
- GRIND:** Conventional flat grind
- BLADE STEEL:** D2
- BLADE FINISH:** Tumbled satin
- HARDNESS:** RC 58-59
- OVERALL LENGTH:** 9.466"
- BLADE LENGTH:** 2.25"
- HANDLE LENGTH:** 4.375"
- WEIGHT:** 11.05 oz. with light
- BLADE THICKNESS:** .25"

DETACHABLE FLASHLIGHT

Brightest flashlight knife available—includes a detachable OLIGHT S10 Baton LED flashlight with max 400 lumens and 104 meter throw.



Comes with a black hybrid sheath, custom designed and fitted.



ORDER INFORMATION

SKU	DESCRIPTION	MSRP
SG04030100	The Vermin Drop Point Black w/ Black Kydex Sheath	\$99.95
SG04050100	The Vermin Tanto Black w/ Black Kydex Sheath	\$99.95

ORDER INFORMATION

SKU	DESCRIPTION	MSRP
SG07070001	Rhino Satin w/ Black Handle & Black Hybrid Sheath (Includes Pelican Case)	\$369.95



GRANDDADDY

Born from the heritage of three generations of knife makers, and in memory of "Old Man" Rodney Shelton, who inspired the blade.



BLACK TEXTURED POWDER COAT



TUMBLED SATIN



BLADE FINISH

Full-tang, differentially heat-treated blade that can bend up to 90 degrees without fracturing.

Black, solid G10 milled handle creates a secure, all-conditions grip.



Blade cut from reclaimed carbon steel sawmill blades for superior capability that's also environmentally friendly.

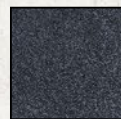
UNIQUE QUICK RELEASE FEATURE
Designed by Southern Grind for minimum motion draw from sheath.

COMES WITH BLACK KYDEX SHEATH



SHEATH OPTIONS

See accessories for sheath options.



BLACK



OD GREEN



FLAT DARK EARTH

Skeletonized Kydex sheath features a comfort belt clip, an adjustable, webbed nylon leg strap, and a custom-designed quick thumb lock-and-release mechanism.

BLADE BREAKDOWN

HANDLE: Black G10

BLADE STEEL: 8670M high carbon steel

HARDNESS: RC 62, tapers to RC 50 at the tip of the blade

OVERALL LENGTH: 16.625"

BLADE LENGTH: 11.375"

HANDLE LENGTH: 5.75"

WEIGHT: 15 oz. (Sheath-6.4 oz.)

BLADE THICKNESS: .095"-.105"



SG01070701 Black w/ Black Kydex Sheath



SG01070002 Satin w/ Black Kydex Sheath

ORDER INFORMATION

SKU	DESCRIPTION	MSRP
SG01070701	Granddaddy G2 Black w/ Black Kydex Sheath	\$184.95
SG01070002	Granddaddy G2 Satin w/ Black Kydex Sheath	\$179.95



JACKAL

The legendary strength of the Jackal's jaws inspired the bite of this blade. Its extreme durability makes it the pick of hunters and survivalists.



HANDLE STYLE

Solid G10 3D milled handle creates a fitted, sturdy grip.



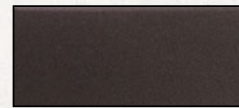
PVD coated 8670M High Carbon Steel blade with a full tang and conventional Flat Grind.



BLADE FINISH

BLACK PVD

GUNMETAL



BLADE BREAKDOWN

HANDLE: Solid G10 3D Milled
GRIND: Conventional flat grind
BLADE STEEL: 8670M high carbon steel
HARDNESS: RC 58-59
OVERALL LENGTH: 9.25"
BLADE LENGTH: 4.75"
HANDLE LENGTH: 4.5"
WEIGHT: 9.5 oz.
BLADE THICKNESS: .21"

BLACK

OD GREEN

FLAT DARK EARTH



SHEATH OPTIONS

Formed Kydex sheath with vertical and horizontal belt clip carry option. See accessories for sheath options.



COMES WITH BLACK KYDEX SHEATH



SG05070201-01 Black Blade & Black Handle w/ Black Kydex Sheath



SG05070301-01 Gunmetal Blade & Black Handle w/ Black Kydex Sheath



SG05070203-01 Black Blade & OD Green Handle w/ Black Kydex Sheath



SG05070303-01 Gunmetal Blade & OD Green Handle w/ Black Kydex Sheath



SG05070204-01 Black Blade & Jade Ghost Green Handle w/ Black Kydex Sheath



SG05070304-01 Gunmetal Blade & Jade Ghost Green Handle w/ Black Kydex Sheath



SG05070206-01 Black Blade & Black & Tan Handle w/ Black Kydex Sheath



SG05070306-01 Gunmetal Blade & Black & Tan Handle w/ Black Kydex Sheath

ORDER INFORMATION

SKU	DESCRIPTION	MSRP
SG05070201-01	Jackal Black Blade & Black Handle w/ Black Kydex Sheath	\$229.95
SG05070301-01	Jackal Gunmetal Blade & Black Handle w/ Black Kydex Sheath	\$229.95
SG05070203-01	Jackal Black Blade & OD Green Handle w/ Black Kydex Sheath	\$229.95
SG05070303-01	Jackal Gunmetal Blade & OD Green Handle w/ Black Kydex Sheath	\$229.95
SG05070204-01	Jackal Black Blade & Jade Ghost Green Handle w/ Black Kydex Sheath	\$229.95
SG05070304-01	Jackal Gunmetal Blade & Jade Ghost Green Handle w/ Black Kydex Sheath	\$229.95
SG05070206-01	Jackal Black Blade & Black & Tan Handle w/ Black Kydex Sheath	\$229.95
SG05070306-01	Jackal Gunmetal Blade & Black & Tan Handle w/ Black Kydex Sheath	\$229.95



JACKAL PUP

The pup has all the cutting ability and durability of the Jackal but in a smaller size. Use it by itself or as a companion with the original Jackal knife.



BLADE FINISH



HANDLE STYLE



Solid G10 3D milled handle creates a fitted, sturdy grip.

PVD coated 8670M High Carbon Steel blade with a full tang and conventional Flat Grind.

BLADE BREAKDOWN

HANDLE: Solid G10 3D Milled
GRIND: Conventional flat grind
BLADE STEEL: 8670M high carbon steel
HARDNESS: RC 58-59
OVERALL LENGTH: 5.75"
BLADE LENGTH: 2.8"
HANDLE LENGTH: 2.95"
WEIGHT: 2.8 oz.
BLADE THICKNESS: .135"



SHEATH OPTIONS

Formed Kydex sheath with vertical and horizontal belt clip carry option. See accessories for sheath options.

COMES WITH BLACK KYDEX SHEATH



SG05080101-01 Black Blade & Black Handle w/ Black Kydex Sheath



SG05080301-01 Gunmetal Blade & Black Handle w/ Black Kydex Sheath



SG05080103-01 Black Blade & OD Green Handle w/ Black Kydex Sheath



SG05080303-01 Gunmetal Blade & OD Green Handle w/ Black Kydex Sheath



SG05080104-01 Black Blade & Jade Ghost Green Handle w/ Black Kydex Sheath



SG05080304-01 Gunmetal Blade & Jade Ghost Green Handle w/ Black Kydex Sheath



SG05080106-01 Black Blade & Black & Tan Handle w/ Black Kydex Sheath



SG05080306-01 Gunmetal Blade & Black & Tan Handle w/ Black Kydex Sheath

ORDER INFORMATION

SKU	DESCRIPTION	MSRP
SG05080101-01	Jackal Pup Black Blade & Black Handle w/ Black Kydex Sheath	\$129.95
SG05080301-01	Jackal Pup Gunmetal Blade & Black Handle w/ Black Kydex Sheath	\$129.95
SG05080103-01	Jackal Pup Black Blade & OD Green Handle w/ Black Kydex Sheath	\$129.95
SG05080303-01	Jackal Pup Gunmetal Blade & OD Green Handle w/ Black Kydex Sheath	\$129.95
SG05080104-01	Jackal Pup Black Blade & Jade Ghost Green Handle w/ Black Kydex Sheath	\$129.95
SG05080304-01	Jackal Pup Gunmetal Blade & Jade Ghost Green Handle w/ Black Kydex Sheath	\$129.95
SG05080106-01	Jackal Pup Black Blade & Black & Tan Handle w/ Black Kydex Sheath	\$129.95
SG05080306-01	Jackal Pup Gunmetal Blade & Black & Tan Handle w/ Black Kydex Sheath	\$129.95



WASP

Designed for professional and novice throwers alike, the wasp provides a consistent throw every time.



PERSONALIZED OPTIONS AVAILABLE

CUSTOM KYDEX SHEATH



8670M High Carbon Steel with tumbled satin finish.

Includes a built in bottle opener.

Full-tang, differentially heat-treated blade.

BLADE BREAKDOWN

HANDLE: Full Tang
BLADE STEEL: 8670M High carbon steel
BLADE FINISH: Tumbled satin
HARDNESS: Differentially heat treated
OVERALL LENGTH: 11.5"
OVERALL WIDTH: 6.625"
WEIGHT: 10.20 oz. each
BLADE THICKNESS: .095"-.105"

The uniquely curved handle and excellent balance help give the wasp a consistent throw every time.

TUMBLLED SATIN



RAW



BLADE FINISH

ORDER INFORMATION

SKU	DESCRIPTION	MSRP
SG10070001	Wasp Throwing Axe Set of 4 w/ Black Kydex Sheath	\$169.95
SG10070002	Wasp Throwing Axe Set of 4 (RAW) w/ Black Kydex Sheath	\$169.95



WANT TO MAKE IT MORE BADASS?

PERSONALIZATION IS AVAILABLE FOR MOST PRODUCTS

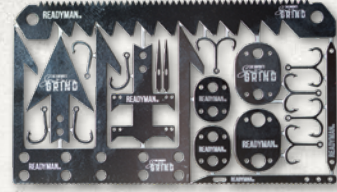
- Logo etching on blades
- Logo etching on clips
- Custom color handle options
- Custom color sheath options

For additional information, or to get started, email: customorders@southerngrind.com

*Requires minimum quantities



SG98700001 Snake Eye Tool Stainless Steel



SG99050100 Southern Grind Survival Card



SG99030001 Southern Grind Leather Keychain



SG99030002 Southern Grind Leather Koozie



SG99030004 Southern Grind Neoprene Koozie-Red



SG99040301 Southern Grind Patch



SG99040401 Southern Grind Paracord Bracelet-Olive



SG99040101 Southern Grind Paracord Bracelet-Black



SHTH-GDBLKKY Grandaddy Black Kydex Sheath



SHTH-GDODKY Grandaddy OD Green Kydex Sheath



SHTH-GDFDEKY Grandaddy Flat Dark Earth Kydex Sheath



SHTH-JKBLKKY Jackal Black Kydex Sheath



SHTH-JKODKY Jackal OD Green Kydex Sheath



SHTH-JKFDEKY Jackal Flat Dark Earth Kydex Sheath



SHTH-JPBLKKY Jackal Pup Black Kydex Sheath



SHTH-JPODKY Jackal Pup OD Green Kydex Sheath



SHTH-JPFDEKY Jackal Pup Flat Dark Earth Kydex Sheath

ORDER INFORMATION

SKU	DESCRIPTION	MSRP
SG98700001	Snake Eye Tool Stainless Steel	\$11.95
SG99050100	Southern Grind Survival Card	\$14.95
SG99030001	Southern Grind Leather Keychain	\$9.95
SG99030002	Southern Grind Leather Koozie	\$19.95
SG99030004	Southern Grind Neoprene Koozie-Red	\$4.95
SG99040301	Southern Grind Patch	\$9.95
SG99040401	Southern Grind Paracord Bracelet-Olive	\$9.95
SG99040101	Southern Grind Paracord Bracelet-Black	\$9.95
SHTH-GDBLKKY	Grandaddy Black Kydex Sheath	\$29.99
SHTH-GDODKY	Grandaddy OD Green Kydex Sheath	\$29.99
SHTH-GDFDEKY	Grandaddy Flat Dark Earth Kydex Sheath	\$29.99
SHTH-JKBLKKY	Jackal Black Kydex Sheath	\$19.99
SHTH-JKODKY	Jackal OD Green Kydex Sheath	\$19.99
SHTH-JKFDEKY	Jackal Flat Dark Earth Kydex Sheath	\$19.99
SHTH-JPBLKKY	Jackal Pup Black Kydex Sheath	\$14.99
SHTH-JPODKY	Jackal Pup OD Green Kydex Sheath	\$14.99
SHTH-JPFDEKY	Jackal Pup Flat Dark Earth Kydex Sheath	\$14.99



SG98710040 Zac Brown's Southern Grind Logo Light Grey/Black Hat



SG98710060 Zac Brown's Southern Grind Saw Blade Black/Black Chambray Hat



SG98710050 Zac Brown's Southern Grind Logo Charcoal/Red Trucker Mesh Hat



Southern Grind Logo Tee



Women's Bad Monkey Tee



Men's Bad Monkey Tee



Spider Monkey Emblem Tee



Southern Grind Emblem Tee



Handmade Emblem Tee

ORDER INFORMATION

SKU	DESCRIPTION	MSRP
SG98710040	Zac Brown's Southern Grind Logo Light Grey/Black Hat	\$19.95
SG98710060	Zac Brown's Southern Grind Saw Blade Black/Black Chambray Hat	\$19.95
SG98710050	Zac Brown's Southern Grind Logo Charcoal/Red Trucker Mesh Hat	\$19.95
SG98110011	Southern Grind Logo Tee - Small	\$19.95
SG98110012	Southern Grind Logo Tee - Medium	\$19.95
SG98110013	Southern Grind Logo Tee - Large	\$19.95
SG98110014	Southern Grind Logo Tee - XL	\$19.95
SG98110015	Southern Grind Logo Tee - 2XL	\$19.95
SG98110016	Southern Grind Logo Tee - 3XL	\$19.95
SG98120011	Women's Bad Monkey Tee - Small	\$19.95
SG98120012	Women's Bad Monkey Tee - Medium	\$19.95
SG98120013	Women's Bad Monkey Tee - Large	\$19.95
SG98120014	Women's Bad Monkey Tee - XL	\$19.95
SG98120015	Women's Bad Monkey Tee - 2XL	\$19.95
SG98110021	Men's Bad Monkey Tee - Small	\$19.95
SG98110022	Men's Bad Monkey Tee - Medium	\$19.95
SG98110023	Men's Bad Monkey Tee - Large	\$19.95
SG98110024	Men's Bad Monkey Tee - XL	\$19.95
SG98110025	Men's Bad Monkey Tee - 2XL	\$19.95
SG98110026	Men's Bad Monkey Tee - 3XL	\$19.95
SG98110061	Spider Monkey Emblem Tee - Small	\$19.95
SG98110062	Spider Monkey Emblem Tee - Medium	\$19.95
SG98110063	Spider Monkey Emblem Tee - Large	\$19.95
SG98110064	Spider Monkey Emblem Tee - XL	\$19.95
SG98110065	Spider Monkey Emblem Tee - 2XL	\$19.95
SG98110066	Spider Monkey Emblem Tee - 3XL	\$19.95
SG98140011	Southern Grind Emblem Tee - Small	\$19.95
SG98140012	Southern Grind Emblem Tee - Medium	\$19.95
SG98140013	Southern Grind Emblem Tee - Large	\$19.95
SG98140014	Southern Grind Emblem Tee - XL	\$19.95
SG98140015	Southern Grind Emblem Tee - 2XL	\$19.95
SG98140016	Southern Grind Emblem Tee - 3XL	\$19.95
SG98130011	Handmade Emblem Tee - Small	\$19.95
SG98130012	Handmade Emblem Tee - Medium	\$19.95
SG98130013	Handmade Emblem Tee - Large	\$19.95
SG98130014	Handmade Emblem Tee - XL	\$19.95
SG98130015	Handmade Emblem Tee - 2XL	\$19.95
SG98130016	Handmade Emblem Tee - 3XL	\$19.95

[OUR EFFORTS SUPPORT]
CAMP SOUTHERN GROUND



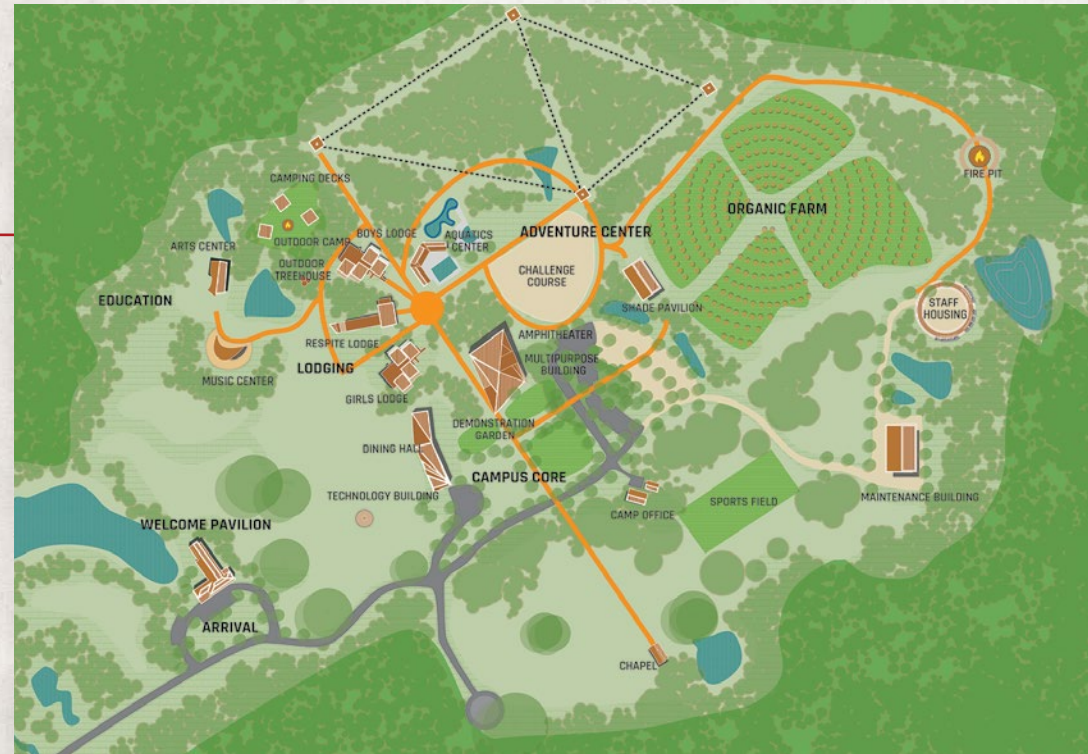
Nestled on more than 400 acres in Fayetteville, Georgia, Camp Southern Ground is the passion-project of GRAMMY Award-winning artist Zac Brown.

The mission of Camp Southern Ground is to provide extraordinary experiences for individuals to recognize and magnify the unique gifts within themselves and others to profoundly impact the world.

Inspired by his own experience as a camp counselor, Zac's vision was to create a state-of-the-art facility that is more than the typical camp experience. Camp Southern Ground has activities to challenge, educate, and inspire each of its campers.

Camp Southern Ground serves children from all backgrounds, races and religions, with special emphasis on those with neuro-developmental disorders. In particular, Autism Spectrum Disorders (ASD), and learning differences, such as ADHD and Dyslexia. Children with social or emotional challenges, and also children from military families will be served.

Camp Southern Ground is a 501 (c) (3) non-profit organization. To learn more please visit CampSouthernGround.org.



**CAMP
SOUTHERN
GROUND**



As a former camp counselor, I know how a positive camp experience can transform a child's life. My dream is that children of all abilities will have an opportunity to experience the magic of the outdoors. Thank you for helping us create an amazing place for kids to learn and grow.

ZAC BROWN





[FIND US]

101 Gardner Park, Peachtree City, GA 30269

[REACH OUT]

404.941.3480 | info@southerngrind.com | www.southerngrind.com

[SOCIAL]

[f](#) Southern Grind [📷](#) ZBSouthernGrind [🐦](#) ZBSouthernGrind