



ÉMI-TÜV

Choose certainty.
Add value.

TEST REPORT

ÉMI-TÜV SÜD Kft.
Central laboratory
KERMI Department
Budapest 13/03/2018
Test report No.: R-1078083
1/3 pages

Name of the client: Global Prefer AG.

Address: Lagerlechfelder Str. 38.
D-86836 Untermeitingen, Deutschland

Date of application: 28 02 2018

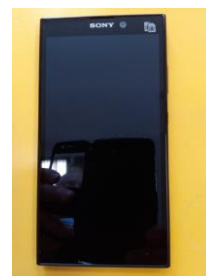
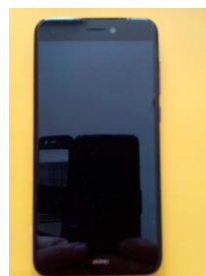
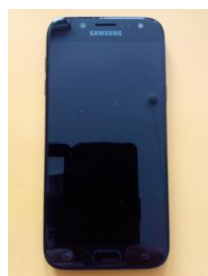
Subject of application: Physical test of "Crack Protect" for non-absorbent surfaces
sample based on client's demand

Receipt date of test samples: 28 02 2018

Testing period: 28 02 2018 – 29 03 2018

Name of test samples: Crack Protect Liquid Screen Protector
The samples were submitted by the Applicant.

1 pcs Samsung Galaxy J5 Black Sky Seriennr: 353762093573697
1 pcs Samsung Galaxy A5 Black Sky Seriennr: 35521208057791
1 pcs Huawei P8 Lite Black Seriennr: 867572030131676
1 pcs Sony Xperia L2 Dual Seriennr: 352668090424308



Remark: The result relates only to the items tested
No extract, abridgment or abstraction from a test report may be published or used to advertise a product without the written consent of the Head of ÉMI-TÜV SÜD Ltd KERMI Department. The results contained herein apply only to the particular sample tested and to the specific test carried out and not to samples of the current production line.

Rn.: 13-09-072640
Tax nr: 10687105-2-13
Bank: UniCredit Bank Hungary Zrt.
10918001-00000068-72970003

Managing Director
Botond Madaras

Phone: +36/1 210 9570
Fax: +36/1 314 3820

www.emi-tuv.hu
TUV[®]

ÉMI-TÜV SÜD Kft.
TÜV SÜD Group
KERMI Department

H-1043 Budapest
Dugonics u. 11.



ÉMI-TÜV
KERMI Department

TEST RESULTS:

Tested parameters	Result		Test method
	Untreated surfaces	Treated* surfaces	
Appearance:	colourless	colourless	sensory
Pencil hardness:			MSZ EN ISO 15184:2013
Samsung Galaxy J5	9H	9H	
Samsung Galaxy A5	9H	9H	
Huawei P8	9H	9H	
Sony Xperia L2	9H	9H	
Scratch resistance:			in-house method:
Samsung Galaxy J5	2 scratches counted	0 scratches counted	20x20mm p80 sandpaper, 200g load
Samsung Galaxy A5	3-4 scratches counted	1 scratches counted	
Huawei P8	21 scratches counted	8-10 scratches counted	
Sony Xperia L2	5-6 scratches counted	1 scratches counted	visual evaluation
Glass surface	16 scratches counted	1 scratches counted	

*After 60 min drying the surface very sticky, it is difficult to remove.

The tested samples are waste and accordingly are disposed.

Reviewed by:

Gabriella Süvegesné Váradi
Gabriella Süvegesné Váradi
 Head of KERMI Department



Tested by:

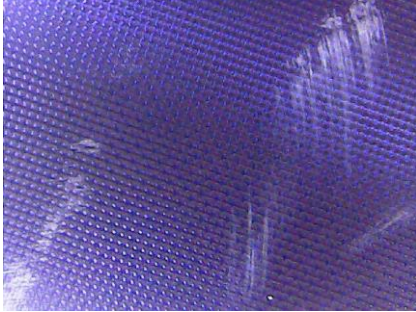
György Magasházy
György Magasházy
 Expert



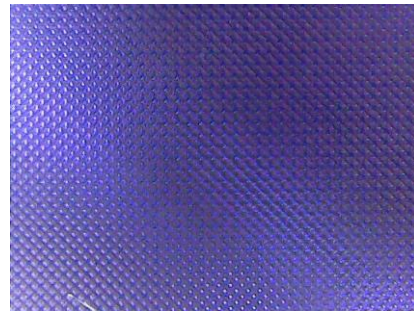
ÉMI-TÜV
KERMI Department

ANNEX:

Samsung J5/2017 untreated surfaces



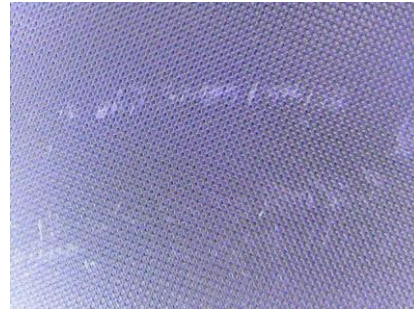
Samsung J5/2017 treated surfaces



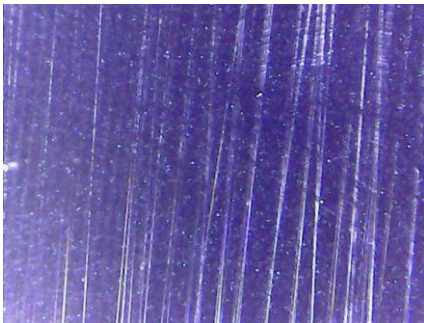
Samsung A5/2017 untreated surfaces



Samsung A5/2017 treated surfaces



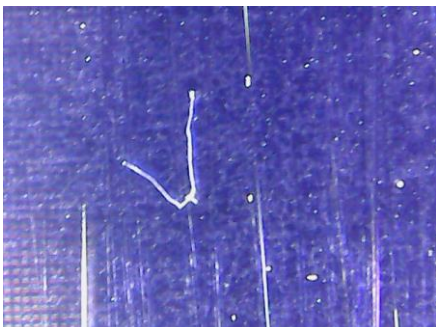
Huawei P8 untreated surfaces



Huawei P8 treated surfaces



Sony untreated surfaces



Sony treated surfaces

