

T10-3-315 Turbo Separator

The T10-3-315 Turbo Separator Model is a complete centrifuge system that removes solids and tramp oil from metal working coolants. It discharges cleaned coolant into the clean tank, removes and directs tramp oil to an oil tank, and solids are manually removed via a large easy-to-clean liner. Components include a 3 phase centrifuge, dirty and clean holding tanks, oil collection tank, transfer and feed pumps, a coolant make-up system and automatic valves and controls.

It can be installed as a free-standing batch process unit, integrated with a single machine tool, or used on-line as a side stream processing unit for large central sumps. Processing capacity is up to 90 GPH.

The T10-3-315 is the easiest commercially available centrifugal coolant recycling system to operate and maintain. Each units operate at high gravitational forces to pull loosely and mechanically emulsified tramp oil away from good coolant. The separator's large solids capacity and easy-to-clean removable bowl liner is designed to make it ideal for many applications. Solids can be removed down to 2 micron.



Specifications

Dimensions	92" x 40" x 70"
Shipping Dimensions	100" x 47" x 80"
Machine Weight	1,400 Lbs.
Shipping Weight	1,765 Lbs.
Maximum Flow	90 GPH
Rotor Volume	2.4 Gal.
Sludge/Capacity Clean out	1.0 Gal./10 Lbs.
Sludge Liner	11" x 8"
Rotor RPM	3,450 GPM
Rotor Motor	3 HP
Min. Inlet Height	4"
Tank Capacity (Dirty)	132 Gal.
Tank Capacity (Clean)	159 Gal.
Decant Oil Tank	24 Gal.
Inlet	3"
Outlet	3/4"
Supply Pump (Optional)	20-30 GPM (40-200 PSI)

Features

- 3450 RPM Rotating Speed, Generating 1180 G's
- Unique bowl design with heavy duty plastic liner with handles for ease of removal
- Mixing in the dirty tank helps deliver all the contaminants to the centrifuge
- Available in corrosion-resistant materials
- Complete packaged system with automatic coolant make-up, tanks and pumps
- Uses no consumable media

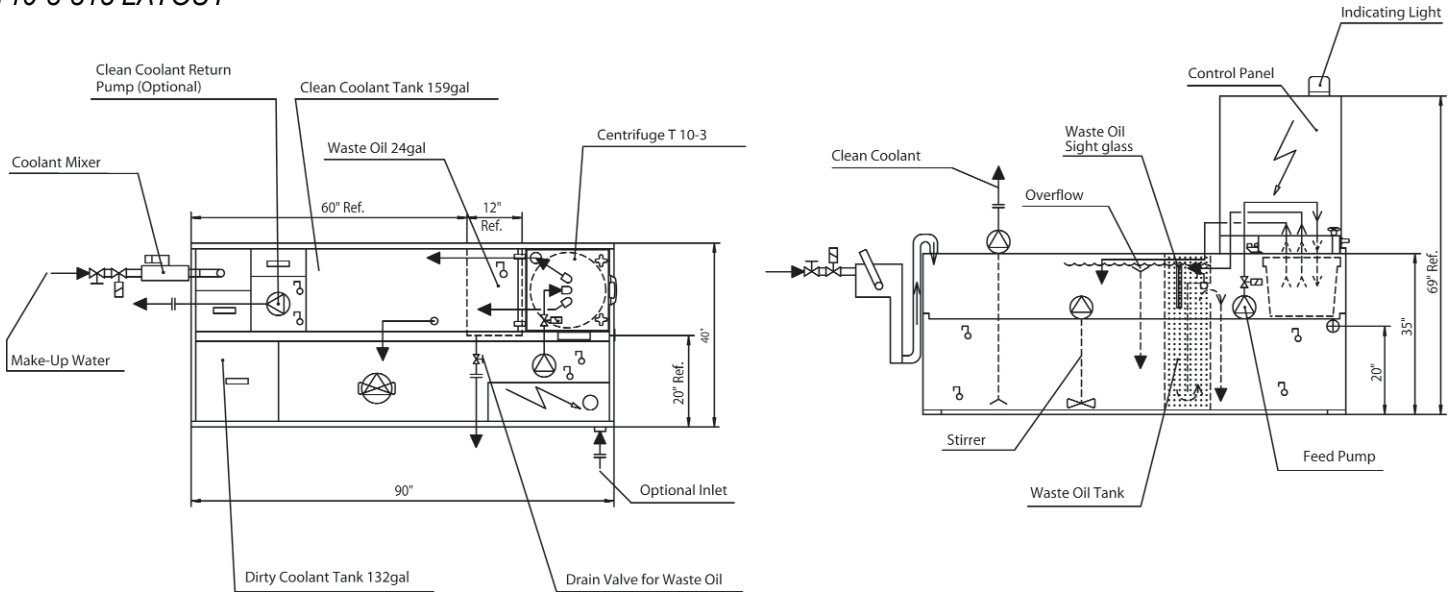
Benefits

- Increased production quality and consistency
- Reduced new coolant purchases
- Reduced disposal volume of reusable coolant
- Reduced machine tool sump maintenance and labor costs
- Reduced tooling costs

T10-3-315 Turbo Separator

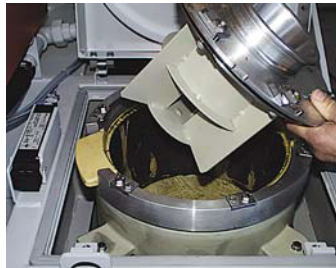
Dimensions

T10-3-315 LAYOUT



Applications

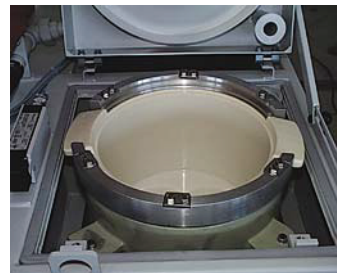
- Ferrous and Non-Ferrous Materials
- Carbide
- Glass
- Graphite
- Ceramics
- Water Soluble Coolant
- Semi-Synthetic Coolants
- Synthetic Coolants



1.



2.



3.



4.

Operation

Solids Removal from the T10-3-315

The separated sludge can be quickly and easily removed from the T10-3-315

1. The centrifuge is switched off and the housing and rotor cover are removed by disengaging the quick-locks.
2. The filled sludge basket is removed.
3. A cleaned sludge basket is re-installed.
4. The rotor and housing cover are re-installed and the centrifuge is switched on.

