

## Polypropylene PPX100 Style Bag Filter Vessel

East Coast Filter, Inc.'s Industrial Polypropylene X100 Style Bag Filter Vessel is a direct replacement to the Original and now Discontinued FSI X100 Style Bag Filter Housings. The user friendly hand tightened cover allows for easy and fast changeouts of the X100 Style Single Bag Filter installed within the Housing.

These Vessels are ideal for applications with corrosive and aggressive chemicals where Stainless Steel and Carbon Steel Vessels cannot be used. In conjunction with being used in applications with chemicals, these vessels are also commonly used in Brackish or Sea Water Applications.

### Features

- Hand-Tightened Cover with Ergonomic Handles for Easy Removal
- Perforated Heavy Duty Polypropylene Internal Basket to Hold an FSI Style X100 (6" x 22") Bag Filter or High Efficiency Pleated Bag with an X01 Style Plastic Flange.
- Vessel comes Standard with (3) removable Polypropylene Support Legs with Hardware for Easy Mounting. Stainless Steel Support Legs are Available as an Option. Legs can be removed to be Mounted on a Wall if required.
- Includes a Bag Filter Hold Down for a Positive Seal.
- Thick Heavy Duty Gasket designed for Severe Duty Applications.



PPX100-2F Vessel

PPX100-2N Vessel

### Specifications

- **Material of Construction -** Polypropylene
- **Leg Construction -** Polypropylene (Standard)  
Stainless Steel Adjustable Tripod Legs (Optional)
- **Gasket Seal -** Buna-N (Standard)  
Viton (Optional)
- **Inlet/Outlet Connection -** 2" FNPT or Flange
- **Gauge/Vent Port Tap -** 1/4" FNPT
- **Operating Temperature -** 104°F (40°C)
- **Maximum Flow Rate -** 100 GPM
- **Design Pressure -** 87 PSI (6 Bar)

#### Cross Reference:

- X100B
- SFTX100AFH-W
- V00327
- SB51N28-85

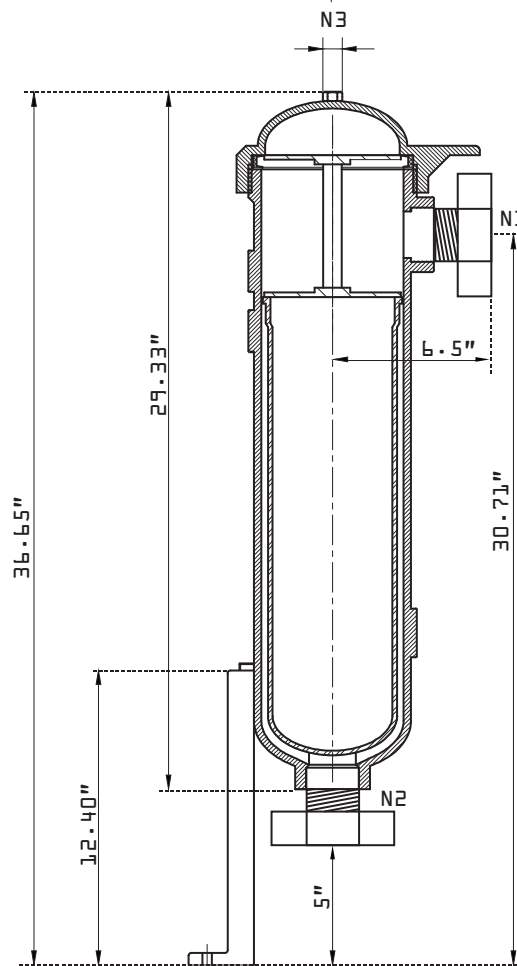
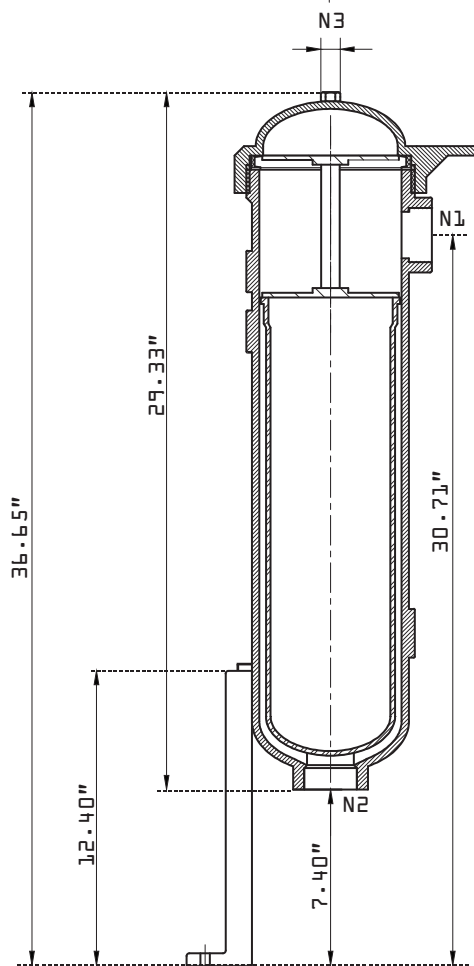
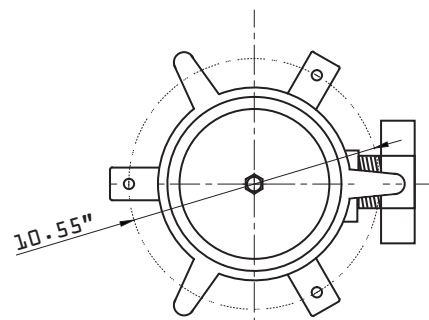
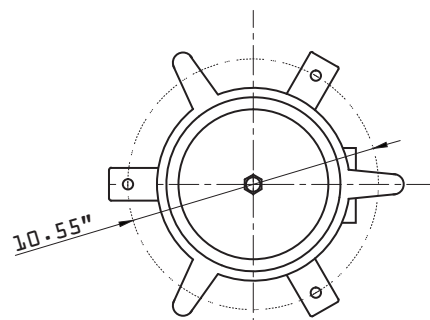
#### For Use with FSI Bags:

- BPONGX01
- BPMOX01
- BPENGX01
- BNMOX01
- BPOMFX01

### Ordering Information

Model	Bag Filter Size	Connection Size	Connection Type	Gasket Material
PP = Polypropylene Bag Filter	X100 = 6" D x 22" L	2 = 2"	N = FNPT	B = Buna-N
			F = Flange	V = Viton

Example: PPX100-2N-B



**CONSTRUCTION**

VESSEL	POLYPROPYLENE
BASKET	POLYPROPYLENE
LEGS	POLYPROPYLENE
GASKET	BUNA-N (STANDARD), VITON (OPTIONAL)

**SPECIFICATIONS**

FLOW RATE	100 GPM
OPERATING PRESSURE	87 PSI
OPERATING TEMPERATURE	104°F

**CONNECTIONS**

NUMBER	SIZE	CONNECTION TYPE	SERVICE
N1	2"	NPT/FLANGE	INLET
N2	2"	NPT/FLANGE	OUTLET
N3	1/4"	NPT	VENT

**East Coast Filter, Inc.**



WRENTHAM, MA • 1-877-ANY-FILTER

TITLE:

FILE NAME: PPX100 FILTER VESSELS

DRAWN BY: SEC

DATE: 01-2024

This Document is the property of East Coast Filter, Inc. It may not be copied in whole or part. Used for the manufacture or otherwise disclosed without prior written consent of East Coast Filter, Inc. This information is subject to change in part or whole and is only provided to serve as a preliminary concept used for sale purposes only.