

## Polypropylene Flat Top Bag Filter Vessel

East Coast Filter, Inc.'s Industrial Polypropylene Flat Top Bag Filter Vessel's are ideal for use in applications with corrosive chemicals where Stainless Steel and Carbon Steel Vessels cannot be used.

Although these vessels are commonly used in aggressive chemical process streams, these vessels are also frequently used in applications that contain brackish or sea water.

Available in both Trade Size #1 and Trade Size #2, East Coast Filter, Inc. has the perfect housing for any application.

### Features

- Wide Range of Chemical Compatibility
- Swing Eye Bolt Closure for Easy Cover Removal
- Perforated Polypropylene Internal Basket to hold a Standard Size #2 (7" x 32") or Size #1 (7" x 16") Bag Filter with a Plastic Flange
- (4) Bolt Holes on the Vessel Base for Easy Mounting
- (1) Blind Flange Cap Supplied

### Specifications

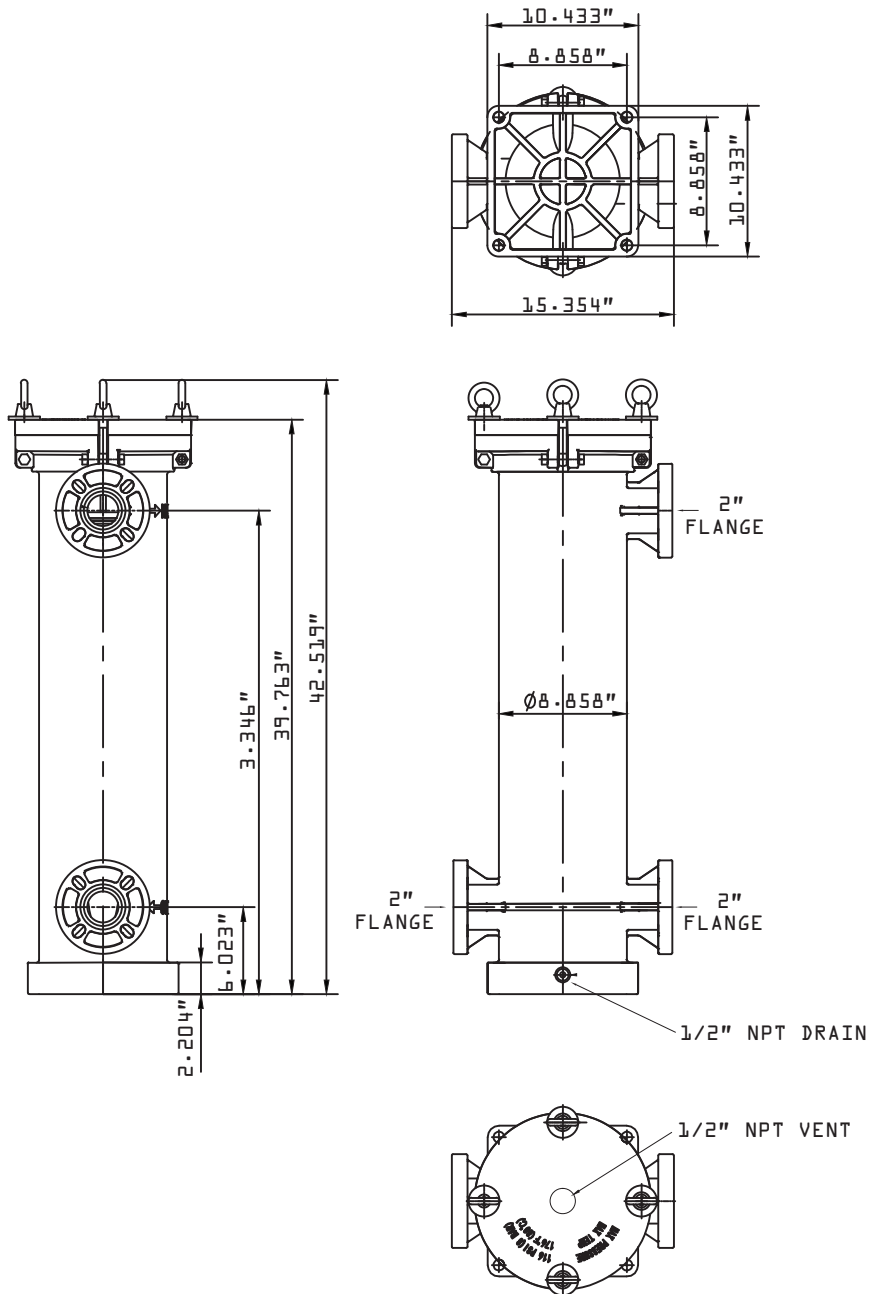
- |                                      |                                     |
|--------------------------------------|-------------------------------------|
| • <b>Material of Construction -</b>  | Polypropylene                       |
| • <b>O-Ring Seal -</b>               | Viton, (Standard) EPDM, Buna-N      |
| • <b>Hardware -</b>                  | 304 Stainless Steel (Size #2)       |
| • <b>Inlet/Outlet Connection -</b>   | 2" Flange                           |
| • <b>Cover Gauge/Vent Port Tap -</b> | 1/2" NPT                            |
| • <b>Operating Temperature -</b>     | 5°F (-15°C) to 176°F (80°C)         |
| • <b>Maximum Flow Rate -</b>         | 75 GPM (Size #1), 150 GPM (Size #2) |



### Ordering Information

Model	Bag Filter Size	Connection	Outlet Connection/Configuration	O-Ring Material
PPFSB = Polypropylene Flat Swing Bolt Cover	1 = Trade Size #1 (7" x 16")	2F = 2" Flange	5 = Opposite Side/Same Side Bottom	V = Viton
	2 = Trade Size #2 (7" x 32")			E = EPDM
				B = Buna-N

Example: PPFSB-2-2F-5-V



**NOTES:**

- MAXIMUM FLOW RATE: 150 GPM
- MAXIMUM DESIGN PRESSURE: 116 PSI
- MAXIMUM OPERATING TEMPERATURE: 176°F
- MATERIAL OF CONSTRUCTION: POLYPROPYLENE
- COVER GASKET MATERIAL: EPDM
- HARDWARE: 304 STAINLESS STEEL SWING BOLT
- BASKET MATERIAL: POLYPROPYLENE
- FLAT MOUNT BASE WITH (4) BOLT HOLES
- UNIVERSAL DESIGN SAME SIDE INLET/OUTLET OR SIDE IN/OPPOSITE SIDE OUT SUPPLIED WITH BLIND FLANGE
- VESSEL DOES NOT INCLUDE DP PORT TAPS. DP PORTS SHOULD BE INSTALLED ON INLET AND OUTLET PIPING



WRENTHAM, MA • 1-877-ANY-FILTER

**TITLE:**

**FILE NAME:** PPFSB-2-2F-5-V

**DRAWN BY:**

**DATE:**