

F200 Compressed Air and Gas Filters Operation Instructions

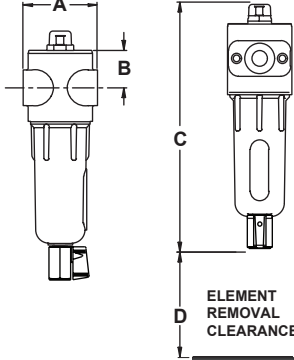
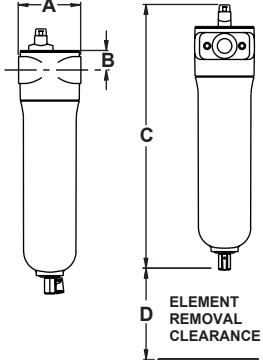
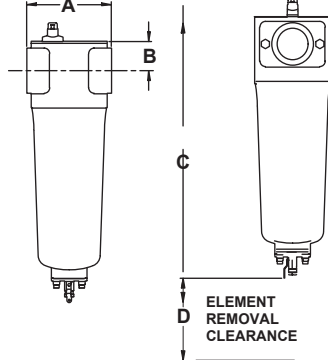
PRODUCT PURPOSE & FUNCTION:

The F200 Series Filters are designed to remove contaminants from compressed air and gas systems. Available in 1/4" to 3" connection sizes and flow capacities from 15 to 1000 scfm (at 100 psig) in 14 housings and 9 filtration grades, the F200 Series can remove oil aerosols, oil vapors, water and particulates. Housings are made of cast Aluminum and coated with an epoxy powder coating for corrosion resistance. All units include push-on elements with durable Polyester drain layer (except RD grade). Accessories include differential pressure indicators, wall mounting kits, connector kits, and automatic drain valves



FILTER DETAILS		FLOW DIRECTION THROUGH ELEMENT				
		(COALESCING) IN/OUT 		(PARTICULATE) OUT/IN 		
FILTRATION GRADES						
APPLICATION	ELEMENT GRADE	PURPOSE	NOMINAL PARTICULATE REMOVAL	ELEMENT FLOW DIRECTION	COLOR CODE	
Oil Removal (Liquids)	AA	Extra Coarse Coalescing	25.00µ	IN/OUT	BLACK	
	A	Coarse Coalescing	5.00µ	IN/OUT	GREEN	
	B	General Purpose Coalescing	1.00µ	IN/OUT	RED	
	C	High Efficiency Coalescing	0.01µ	IN/OUT	BLUE	
Particulate Removal (Solids)	RAA	Extra Coarse Particulate	25.00µ	OUT/IN	BLACK	
	RA	Coarse Particulate	5.00µ	OUT/IN	GREEN	
	RB	General Purpose Particulate	1.00µ	OUT/IN	RED	
	RC	High Efficiency Particulate	0.01µ	OUT/IN	BLUE	
Oil Vapor Removal	RD	Vapor Absorbing	0.01µ	OUT/IN	BLACK	
OPERATING CONDITIONS						
MAXIMUM WORKING PRESSURE						
All Models		250 PSIG				
OPERATING TEMPERATURE						
Minimum		35°F				
Maximum		225°F				
MAXIMUM RECOMMENDED INLET TEMPERATURE						
AA, A, RAA, RA, RB, and RC Series		225°F				
B Series		175°F				
C Series		125°F				
RD Series		80°F				
WARNINGS						
<ul style="list-style-type: none"> • DO NOT REPLACE ANY ITEM ON FILTER WHILE IT IS PRESSURIZED. • DO NOT OPERATE A LEAKING FILTER. TAKE FILTER OUT OF SERVICE IMMEDIATELY. • DO NOT OPERATE ABOVE MAXIMUM WORKING PRESSURE (MWP) AT MAXIMUM OPERATING TEMPERATURE (°F). • USE THE PROPER RULES FOR THE GAS BEING PROCESSED. 						

F200 Compressed Air and Gas Filters Operation Instructions

FILTER HOUSING DIMENSIONS & WEIGHTS										
DIMENSIONS FOR: F200-15-1/4 F200-25-3/8 F200-25-1/2			DIMENSIONS FOR: F200-55-1/2 F200-150-1 F200-400-2 F200-85-3/4 F200-265-1-1/4 F200-500-2 F200-100-1 F200-350-1-1/2				DIMENSIONS FOR: F200-600-3 F200-800-3 F200-1000-3			
										
FILTER MODEL	FLOW** (SCFM)	IN/OUT CONN. (NPT)	A (INCHES)	B (INCHES)	C*** (INCHES)	D (INCHES)	HOUSING WEIGHT**** (LBS)	ELEMENT WEIGHT**** (LBS)		
F200-15-1/4-(*)	15	1/4"	2-13/16	1-5/8	9-1/4	3	1.3	0.1		
F200-25-3/8-(*)	25	3/8"	2-13/16	1-5/8	9-1/4	3	1.3	0.1		
F200-25-1/2-(*)	25	1/2"	2-13/16	1-5/8	9-1/4	3	1.3	0.1		
F200-55-1/2-(*)	55	1/2"	3-7/16	1-5/16	11-3/4	4	3.2	0.3		
F200-85-3/4-(*)	85	3/4"	4-15/16	1-5/8	14-9/16	4	5.7	0.5		
F200-100-1-(*)	100	1"	4-15/16	1-5/8	14-9/16	4	5.7	0.6		
F200-150-1-(*)	150	1"	4-15/16	1-5/8	20-7/16	6	6.7	0.9		
F200-265-1-1/4-(*)	265	1-1/4"	4-15/16	1-5/8	20-7/16	6	6.7	1		
F200-350-1-1/2-(*)	350	1-1/2"	5-5/16	2-1/16	21-3/8	6	8.7	1.1		
F200-400-2-(*)	400	2"	5-5/16	2-1/16	21-3/8	6	8.7	1.1		
F200-500-2-(*)	500	2"	5-5/16	2-1/16	29-3/8	6	9.9	2.3		
F200-600-3-(*)	600	3"	7-7/8	2-3/4	24-1/2	8	19.8	2.7		
F200-800-3-(*)	800	3"	7-7/8	2-3/4	30-1/16	8	21.9	3.6		
F200-1000-3-(*)	1000	3"	7-7/8	2-3/4	34-3/4	12	28.1	4.3		
FLOW CAPACITIES AT VARIOUS OPERATING PRESSURES (SCFM)										
FILTER MODEL	25 PSIG	50 PSIG	75 PSIG	100 PSIG	125 PSIG	150 PSIG	175 PSIG	200 PSIG	225 PSIG	250 PSIG
F200-15-1/4	8	11	13	15	17	18	20	21	23	24
F200-25-3/8	13	18	22	25	28	31	33	35	38	40
F200-25-1/2	13	18	22	25	28	31	33	35	38	40
F200-55-1/2	28	39	48	55	62	67	73	78	83	87
F200-85-3/4	43	60	74	85	95	104	112	120	128	134
F200-100-1	50	71	87	100	112	122	132	141	150	158
F200-150-1	75	107	131	150	168	183	198	212	225	237
F200-265-1-1/4	133	188	231	265	297	323	350	374	398	419
F200-350-1-1/2	175	249	305	350	392	427	462	494	525	553
F200-400-2	200	284	348	400	448	488	528	564	600	632
F200-500-2	250	355	435	500	560	610	660	705	750	790
F200-600-3	300	426	522	600	672	732	792	846	900	948
F200-800-3	400	568	696	800	896	976	1056	1128	1200	1264
F200-1000-3	500	710	870	1000	1120	1220	1320	1410	1500	1508

F200 Compressed Air and Gas Filters Operation Instructions

INSTALLATION

- Before installing filter, check operating temperature and pressure conditions to verify that they are within the specified ranges. **(See Operating Conditions on page 1)**. Also verify that system flow rate corresponds to the rated capacity of the filter. Operating at flows above rated capacity will result in increased pressure drop.
- Locate Filter at the point of lowest operating temperature to ensure that water and oil vapor do not condense downstream of the filter. Filter should be installed close to the point of use to minimize the risk of pipe scale, dirt, etc. recontaminating the compressed air or gas. This is particularly important when installing a new filter on an existing system that has not had proper filtration.
- Install filter vertically. Provide required minimum clearance below filter to allow for replacement of element. **(See Element Removal Clearance on page 2)**.
- Protect filter from reverse flow conditions. Do not install filter downstream of quick opening valves.
- Remove filter head from the bowl by turning bowl counter-clockwise. Pull element from locator. Set bowl and element aside for use later.
- Install inlet and outlet shutoff valves to facilitate replacement of element. Bypass piping is recommended **(See Figure 1A and 1B)**. **MAKE SURE VALVES ARE CLOSED BEFORE PROCEEDING.**
- Connect filter head into piping. Avoid reducers or bushings to match inlet size. The resulting restriction will increase pressure drop. Make sure head is installed with flow arrows pointing in proper direction. Use pipe thread compound as required.
- Install element by pushing onto element locator on filter head.
- Check to make sure that the o-ring in the head is in the proper position. Thread filter bowl into filter head and tighten either by hand (models F200-15 through 55) or with strap wrench (models F200-85 through 1000). Do not over tighten. Over-tightening could damage filter bowl or make it difficult to remove.
- Make sure drain valve on bottom of filter is closed. On filters equipped with ADM2-2 auto drain, provide a drain line to remove accumulated water and oil.
- Pressurize system and slowly open inlet and outlet shutoff valves.
- Check piping for leaks. Depressurize system and repair leaks as needed.

- Re-pressurize system and slowly open inlet and outlet shutoff valves. Close bypass valve if provided.
- Filter is now in service.

IMPORTANT

INSTALL FILTER HEAD INTO THE PIPING WITH ARROWS POINTING IN THE PROPER DIRECTION TO ENSURE PROPER OPERATION. (SEE FLOW DIRECTION DIAGRAM BELOW).

FIGURE 1A BYPASS

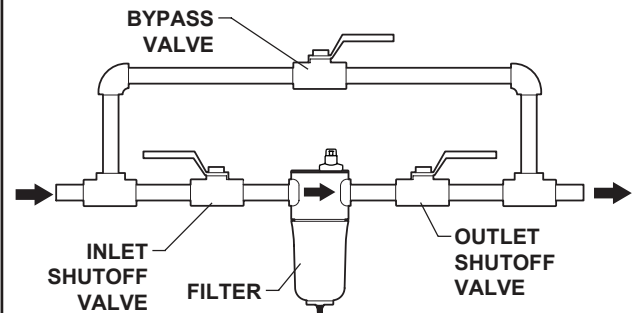


FIGURE 1B FILTERED BYPASS

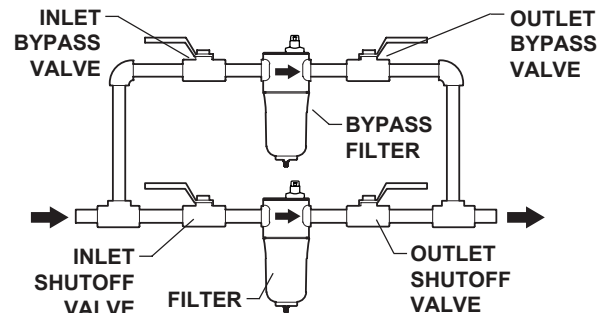
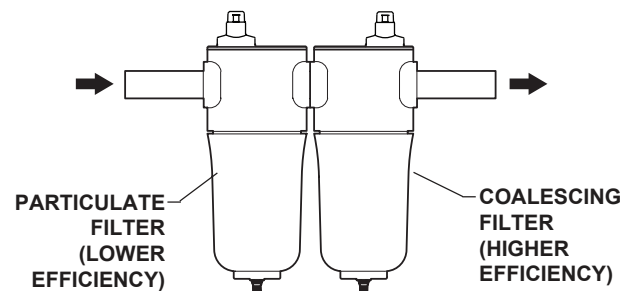


FIGURE 1C FILTERS MANIFOLDED & CONNECTOR KIT



F200 Compressed Air and Gas Filters Operation Instructions

FIGURE 2A F200-15-1/4 THRU 25-1/2 REPLACEMENT PARTS

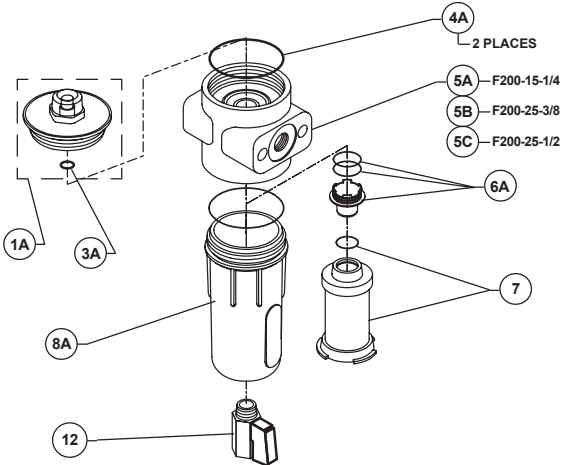


FIGURE 2B F200-55-1/2 THRU 500-2 REPLACEMENT PARTS

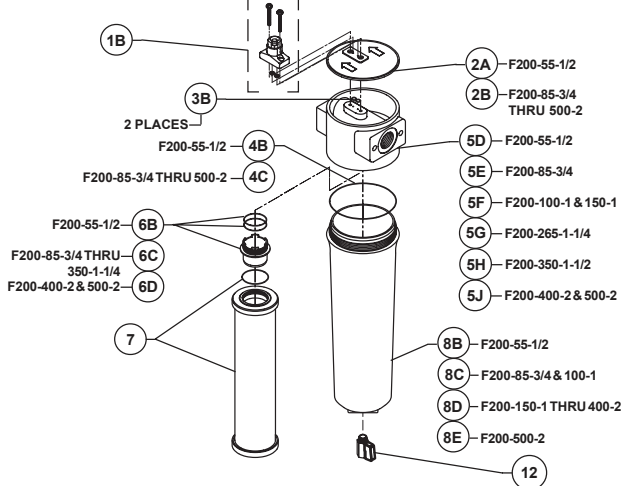
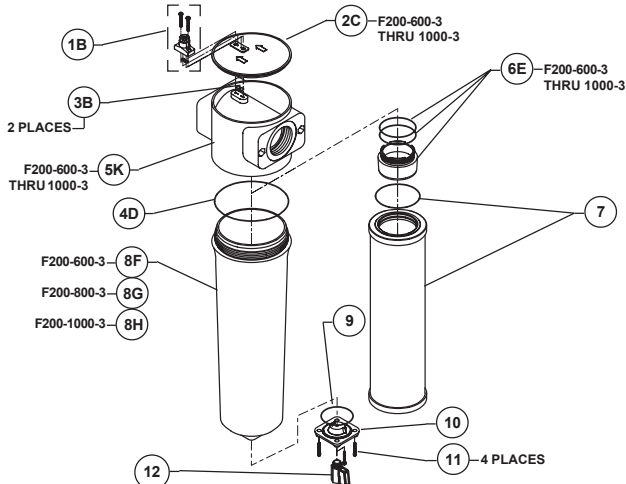


FIGURE 2C F200-600-3 THRU 1000-3 REPLACEMENT PARTS



Finding a part number

1. Find the figure that references your filter.
2. Find the replacement part you need and the item number of that part.
3. Find the item number in the first column of the **Replacement Parts** table.
4. Find the part description that best describes the part.
5. See the last column for the part number.

REPLACEMENT PARTS

ITEM	PART DESCRIPTION	FIG 2-	QTY	PART NO.
1A	PD-6A-C DIFFERENTIAL PRESSURE INDICATOR KIT FOR COALESCING FILTERS	A	1	84-10126
	PD-6A-P DIFFERENTIAL PRESSURE INDICATOR KIT FOR PARTICULATE FILTERS	A	1	84-10127
1B	PD-6 DIFFERENTIAL PRESSURE INDICATOR KIT	B,C	1	84-10125
2A	BLANKING PLATE FOR F200-55-1/2	B	1	326-00110
2B	BLANKING PLATE FOR F200-85-3/4 THRU 500-2	B	1	326-00120
2C	BLANKING PLATE FOR F200-600-3 THRU 1000-3	B	1	326-00130
3A	BLANKING PLATE O-RING FOR F200-15-1/4 THRU 25-1/2	A	1	475-00110
3B	BLANKING PLATE O-RING FOR F200-55-1/2 THRU 1000-3	B,C	2	475-00006
4A	BODY O-RING FOR F200-15-1/4 THRU 25-1/2	A	2	475-01000
4B	BODY O-RING FOR F200-55-1/2	B	1	475-00146
4C	BODY O-RING FOR F200-85-3/4 THRU 500-2	B	1	475-00242
4D	BODY O-RING FOR F200-600-3 THRU 1000-3	C	1	475-00362
5A	1/4" NPT FILTER HEAD FOR F200-15-1/4	A	1	201-00100
5B	3/8" NPT FILTER HEAD FOR F200-25-3/8	A	1	201-00110
5C	1/2" NPT FILTER HEAD FOR F200-25-1/2	A	1	201-00120
5D	1/2" NPT FILTER HEAD FOR F200-55-1/2	B	1	201-00130
5E	3/4" NPT FILTER HEAD FOR F200-85-3/4	B	1	201-00140
5F	1" NPT FILTER HEAD FOR F200-100-1 & 150-1	B	1	201-00150
5G	1-1/4" NPT FILTER HEAD FOR F200-265-1-1/4	B	1	201-00160
5H	1-1/2" NPT FILTER HEAD FOR F200-350-1-1/2	B	1	201-00170
5J	2" NPT FILTER HEAD FOR F200-400-2 & F200-500-2	B	1	201-00180
5K	3" NPT FILTER HEAD FOR F200-600-3 THRU 1000-3	C	1	201-00200
6A	EPL 1 ELEMENT ADAPTOR FOR F200-15-1/4 THRU 25-1/2	A	1	326-00005
6B	EPL 2 ELEMENT ADAPTOR FOR F200-55-1/2	B	1	326-00010
6C	EPL 3 ELEMENT ADAPTOR F200-85-3/4 THRU 265-1-1/4	B	1	326-00015
6D	EPL 4 ELEMENT ADAPTOR FOR F200-350-1-1/2 THRU 500-2	B	1	326-00020
6E	EPL 5 ELEMENT ADAPTOR FOR F200-600-3 THRU 1000-3	C	1	326-00025
7	REPLACEMENT ELEMENTS (REFER TO PAGE 5)			
8A	FILTER BOWL FOR F200-15-1/4 THRU 25-1/2	A	1	201-01000
8B	FILTER BOWL FOR F200-55-1/2	B	1	201-01010
8C	FILTER BOWL FOR F200-85-3/4 & 100-1	B	1	201-01020
8D	FILTER BOWL FOR F200-150-1 THRU 400-2	B	1	201-01030
8E	FILTER BOWL FOR F200-500-2	B	1	201-01040
8F	FILTER BOWL FOR F200-600-3	C	1	201-01050
8G	FILTER BOWL FOR F200-800-3	C	1	201-01060
8H	FILTER BOWL FOR F200-1000-3	C	1	201-01070
9	DRAIN ADAPTOR O-RING	C	1	475-00142
10	DRAIN ADAPTOR PLATE	C	1	261-00006
11	DRAIN ADAPTOR SCREW	C	4	460-00100
12	MANUAL DRAIN 1/4" KIT	A,B,C	1	84-10852

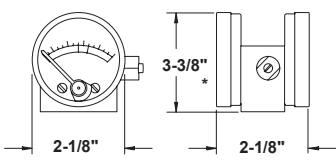
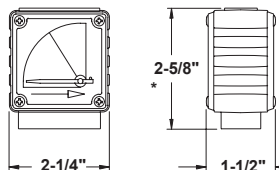
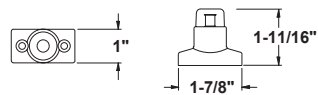
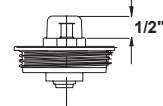
F200 Compressed Air and Gas Filters Operation Instructions

REPLACEMENT ELEMENTS							
FILTER MODEL	ELEMENT MODEL	PART NUMBER		FILTER MODEL	ELEMENT MODEL	PART NUMBER	
F200-15-1/4, F200-25-3/8 & F200-25-1/2	E200-15/25-AA	26-10400		F200-265-1-1/4	E200-265-RB	26-2108	
	E200-15/25-RAA	26-10401			E200-265-C	26-2086	
	E200-15/25-A	26-10402			E200-265-RC	26-2119	
	E200-15/25-RA	26-10403			E200-265-RD	26-2156	
	F200-55-1/2	E200-15/25-B	26-10404		F200-350-1-1/2 & 400-2	E200-350/400-AA	26-10409
		E200-15/25-RB	26-10405			E200-350/400-RAA	26-10410
		E200-15/25-C	26-10406			E200-350/400-A	26-10411
		E200-15/25-RC	26-10407			E200-350/400-RA	26-10412
E200-15/25-RD		26-10408		E200-350/400-B		26-10413	
E200-55-AA		26-10032		E200-350/400-RB		26-10414	
E200-55-RAA		26-10107		E200-350/400-C		26-10415	
E200-55-A		26-2059		E200-350/400-RC		26-10416	
E200-55-RA	26-2092		E200-350/400-RD	26-10417			
F200-85-3/4	E200-55-B	26-2070		F200-500-2	E200-500-AA	26-10418	
	E200-55-RB	26-2103			E200-500-RAA	26-10419	
	E200-55-C	26-2081			E200-500-A	26-10420	
	E200-55-RC	26-2114			E200-500-RA	26-10421	
	E200-55-RD	26-2151			E200-500-B	26-10422	
	E200-85-AA	26-10034			E200-500-RB	26-10423	
	E200-85-RAA	26-10109			E200-500-C	26-10424	
	E200-85-A	26-2061			E200-500-RC	26-10425	
E200-85-RA	26-2094		E200-500-RD	26-10426			
F200-100-1	E200-85-B	26-2072		F200-600-3	E200-600-AA	26-10427	
	E200-85-RB	26-2105			E200-600-RAA	26-10428	
	E200-85-C	26-2083			E200-600-A	26-10429	
	E200-85-RC	26-2116			E200-600-RA	26-10430	
	E200-85-RD	26-2153			E200-600-B	26-10431	
	E200-100-AA	26-10035			E200-600-RB	26-10432	
	E200-100-RAA	26-10110			E200-600-C	26-10433	
	E200-100-A	26-2062			E200-600-RC	26-10434	
E200-100-RA	26-2095		E200-600-RD	26-10435			
F200-150-1	E200-100-B	26-2073		F200-800-3	E200-800-AA	26-10436	
	E200-100-RB	26-2106			E200-800-RAA	26-10437	
	E200-100-C	26-2084			E200-800-A	26-10438	
	E200-100-RC	26-2117			E200-800-RA	26-10439	
	E200-100-RD	26-2154			E200-800-B	26-10440	
	E200-150-AA	26-10036			E200-800-RB	26-10441	
	E200-150-RAA	26-10111			E200-800-C	26-10442	
	E200-150-A	26-2063			E200-800-RC	26-10443	
E200-150-RA	26-2096		E200-800-RD	26-10444			
F200-265-1-1/4	E200-150-B	26-2074		F200-1000-3	E200-1000-AA	26-10040	
	E200-150-RB	26-2107			E200-1000-RAA	26-10115	
	E200-150-C	26-2085			E200-1000-A	26-2067	
	E200-150-RC	26-2118			E200-1000-RA	26-2100	
	E200-150-RD	26-2155			E200-1000-B	26-2078	
	E200-265-AA	26-10037			E200-1000-RB	26-2111	
	E200-265-RAA	26-10112			E200-1000-C	26-2089	
	E200-265-A	26-2064			E200-1000-RC	26-2122	
E200-265-RA	26-2097		E200-1000-RD	26-2159			
	E200-265-B	26-2075					

F200 Compressed Air and Gas Filters Operation Instructions

ACCESSORIES																																																									
MOUNTING BRACKET KITS																																																									
	<table border="1"> <thead> <tr> <th colspan="6">MOUNTING BRACKET DIMENSIONS</th> </tr> <tr> <th>TYPE</th> <th>A</th> <th>B</th> <th>C</th> <th>D</th> <th>E</th> </tr> </thead> <tbody> <tr> <td>MB-1</td> <td>2-15/16"</td> <td>1-9/16"</td> <td>13/16"</td> <td>1-3/4"</td> <td>1/4"</td> </tr> <tr> <td>MB-1-2</td> <td>2-15/16"</td> <td>1-9/16"</td> <td>13/16"</td> <td>1-3/4"</td> <td>1/4"</td> </tr> <tr> <td>MB-2</td> <td>4-5/16"</td> <td>2-3/8"</td> <td>1"</td> <td>2-9/16"</td> <td>5/16"</td> </tr> <tr> <td>MB-2-2</td> <td>4-3/4"</td> <td>2-3/4"</td> <td>1"</td> <td>2-3/4"</td> <td>5/16"</td> </tr> <tr> <td>MB-3-2</td> <td>7-1/8"</td> <td>4-15/16"</td> <td>1-3/16"</td> <td>3-15/16"</td> <td>3/8"</td> </tr> </tbody> </table>	MOUNTING BRACKET DIMENSIONS						TYPE	A	B	C	D	E	MB-1	2-15/16"	1-9/16"	13/16"	1-3/4"	1/4"	MB-1-2	2-15/16"	1-9/16"	13/16"	1-3/4"	1/4"	MB-2	4-5/16"	2-3/8"	1"	2-9/16"	5/16"	MB-2-2	4-3/4"	2-3/4"	1"	2-3/4"	5/16"	MB-3-2	7-1/8"	4-15/16"	1-3/16"	3-15/16"	3/8"														
	MOUNTING BRACKET DIMENSIONS																																																								
	TYPE	A	B	C	D	E																																																			
MB-1	2-15/16"	1-9/16"	13/16"	1-3/4"	1/4"																																																				
MB-1-2	2-15/16"	1-9/16"	13/16"	1-3/4"	1/4"																																																				
MB-2	4-5/16"	2-3/8"	1"	2-9/16"	5/16"																																																				
MB-2-2	4-3/4"	2-3/4"	1"	2-3/4"	5/16"																																																				
MB-3-2	7-1/8"	4-15/16"	1-3/16"	3-15/16"	3/8"																																																				
	<table border="1"> <thead> <tr> <th colspan="8">INSTALLED MOUNTING BRACKET KIT DIMENSIONS</th> </tr> <tr> <th>TYPE</th> <th>USED ON</th> <th>PART NO</th> <th>A</th> <th>B</th> <th>C</th> <th>D</th> <th>E</th> </tr> </thead> <tbody> <tr> <td>MB-1</td> <td>55</td> <td>84-0720</td> <td>4-1/2"</td> <td>1-1/4"</td> <td>1-3/4"</td> <td>3-5/16"</td> <td>5-1/4"</td> </tr> <tr> <td>MB-1-2</td> <td>15 THRU 25</td> <td>84-10130</td> <td>3-3/4"</td> <td>1-1/4"</td> <td>1-3/4"</td> <td>3"</td> <td>4-7/16"</td> </tr> <tr> <td>MB-2</td> <td>85 THRU 265</td> <td>84-0721</td> <td>5-15/16"</td> <td>1-9/16"</td> <td>2-9/16"</td> <td>4-7/8"</td> <td>6-11/16"</td> </tr> <tr> <td>MB-2-2</td> <td>350 THRU 500</td> <td>84-10131</td> <td>6-1/2"</td> <td>2"</td> <td>2-3/4"</td> <td>5-1/4"</td> <td>7-5/16"</td> </tr> <tr> <td>MB-3-2</td> <td>600 THRU 1000</td> <td>84-10132</td> <td>9-5/16"</td> <td>3-3/4"</td> <td>3-15/16"</td> <td>7-7/16"</td> <td>10-1/4"</td> </tr> </tbody> </table>	INSTALLED MOUNTING BRACKET KIT DIMENSIONS								TYPE	USED ON	PART NO	A	B	C	D	E	MB-1	55	84-0720	4-1/2"	1-1/4"	1-3/4"	3-5/16"	5-1/4"	MB-1-2	15 THRU 25	84-10130	3-3/4"	1-1/4"	1-3/4"	3"	4-7/16"	MB-2	85 THRU 265	84-0721	5-15/16"	1-9/16"	2-9/16"	4-7/8"	6-11/16"	MB-2-2	350 THRU 500	84-10131	6-1/2"	2"	2-3/4"	5-1/4"	7-5/16"	MB-3-2	600 THRU 1000	84-10132	9-5/16"	3-3/4"	3-15/16"	7-7/16"	10-1/4"
INSTALLED MOUNTING BRACKET KIT DIMENSIONS																																																									
TYPE	USED ON	PART NO	A	B	C	D	E																																																		
MB-1	55	84-0720	4-1/2"	1-1/4"	1-3/4"	3-5/16"	5-1/4"																																																		
MB-1-2	15 THRU 25	84-10130	3-3/4"	1-1/4"	1-3/4"	3"	4-7/16"																																																		
MB-2	85 THRU 265	84-0721	5-15/16"	1-9/16"	2-9/16"	4-7/8"	6-11/16"																																																		
MB-2-2	350 THRU 500	84-10131	6-1/2"	2"	2-3/4"	5-1/4"	7-5/16"																																																		
MB-3-2	600 THRU 1000	84-10132	9-5/16"	3-3/4"	3-15/16"	7-7/16"	10-1/4"																																																		
	<p>KITS FOR MB-1 THRU MB-2-2 INCLUDES (2) MOUNTING BRACKETS, (2) TIE RODS, (2) WASHERS, & (2) NUTS.</p>	<p>KIT FOR MB-3-2 INCLUDES (2) MOUNTING BRACKETS, (4) SCREWS, (4) WASHERS, & (4) NUTS.</p>																																																							
CONNECTOR KITS	<p>CK-1 & CK-1-2</p>	<p>CK-2, CK-2-2 & CK-3-2</p> <p>NOTE: BLANKING PLATES REMOVED FOR CLARITY.</p>																																																							
	<table border="1"> <thead> <tr> <th colspan="4">CONNECTOR KIT DETAILS</th> </tr> <tr> <th>MODEL</th> <th>A</th> <th>USED FOR (GF200-)</th> <th>PART NO</th> </tr> </thead> <tbody> <tr> <td>CK-1</td> <td>7"</td> <td>55</td> <td>84-0723</td> </tr> <tr> <td>CK-1-2</td> <td>5-3/4"</td> <td>15 THRU 25</td> <td>84-10133</td> </tr> <tr> <td>CK-2</td> <td>9-7/8"</td> <td>85 THRU 265</td> <td>84-0724</td> </tr> <tr> <td>CK-2-2</td> <td>10-11/16"</td> <td>350 THRU 500</td> <td>84-10134</td> </tr> <tr> <td>CK-3-2</td> <td>15-3/4"</td> <td>600 THRU 1000</td> <td>84-10135</td> </tr> </tbody> </table>	CONNECTOR KIT DETAILS				MODEL	A	USED FOR (GF200-)	PART NO	CK-1	7"	55	84-0723	CK-1-2	5-3/4"	15 THRU 25	84-10133	CK-2	9-7/8"	85 THRU 265	84-0724	CK-2-2	10-11/16"	350 THRU 500	84-10134	CK-3-2	15-3/4"	600 THRU 1000	84-10135																												
	CONNECTOR KIT DETAILS																																																								
MODEL	A	USED FOR (GF200-)	PART NO																																																						
CK-1	7"	55	84-0723																																																						
CK-1-2	5-3/4"	15 THRU 25	84-10133																																																						
CK-2	9-7/8"	85 THRU 265	84-0724																																																						
CK-2-2	10-11/16"	350 THRU 500	84-10134																																																						
CK-3-2	15-3/4"	600 THRU 1000	84-10135																																																						
DRAIN KITS	<p>ADM-2-2 AUTO DRAIN (P/N: 84-10120)</p>	<p>1/4" PETCOCK MANUAL DRAIN (P/N: 84-10850)</p>	<p>1/4" BALL VALVE MANUAL DRAIN (P/N: 84-10852)</p>	<p>1/4" TO 1/2" DRAIN ADAPTER (P/N: 84-10851)</p>																																																					

F200 Compressed Air and Gas Filters Operation Instructions

ACCESSORIES CONT'D			
DIFFERENTIAL PRESSURE INDICATOR KITS	PD-4 (P/N: 84-0764)	PD-5 (P/N: 84-10001)	PD-6 (P/N: 84-10125)
	FITS ALL MODELS EXCEPT F200-15-1/4 THRU 25-1/2.	FITS ALL MODELS EXCEPT F200-15-1/4 THRU 25-1/2.	FITS ALL MODELS EXCEPT F200-15-1/4 THRU 25-1/2.
			
	KIT INCLUDES (1) PD-4, (2) SCREWS, (4) O-RINGS & INSTRUCTION SHEET. *DIMENSIONS EXTENDING ABOVE FILTER HOUSING.	KIT INCLUDES (1) PD-5, (2) SCREWS, (4) O-RINGS & INSTRUCTION SHEET. *DIMENSIONS EXTENDING ABOVE FILTER HOUSING.	KIT INCLUDES (1) PD-6, (2) SCREWS, (4) O-RINGS & INSTRUCTION SHEET. PD-6A-C (P/N: 84-10126) PD-6A-P (P/N: 84-10127) FITS MODELS F200-15-1/4 THRU 25-1/2 ONLY. PD-6A-C FOR COALESCING FILTERS PD-6A-P FOR PARTICULATE FILTERS  KIT INCLUDES (1) PD-6A, (2) O-RINGS & INSTRUCTION SHEET. *DIMENSIONS EXTENDING ABOVE FILTER HOUSING.

MAINTENANCE

- Drain coalescing filters every shift.
- Check differential pressures weekly on coalescing and particulate filters (AA, A, B, C, RA, RB, and RC grades). When differential pressure reaches 10 psid, install clean elements. On adsorbing filters (grade RD), install clean elements when hydrocarbon vapors are first detected downstream or every six months, whichever comes first.
- For correct replacement element model numbers, see label on filter housing, the bottom endcap of the element, or page 5 of this instruction manual.
- When changing out element, inspect housing o-ring for nicks and/or cracks. If nicks and/or cracks are present, replace o-ring.

TROUBLE SHOOTING

CONDITION	POTENTIAL CAUSE	RECOMMENDATION
Initial pressure drop too high	Filter undersized for flow rate. Filter grade too fine. Filter inlet smaller than pipe size.	Install larger filter. Install coarser grade element. Install larger filter.
Oil carryover	Oil present in system before installing filter. Excessive inlet oil >50ppm. Filter installed backwards. Filter bowl not being drained. High differential pressure. Defective seal. Incorrect element grade. By-pass valve leaking or open. Unfiltered gas entering from source down stream of filter. High operating temperatures. Cooling by refrigerated dryer.	Clean piping. Check compressor and/or gas/oil separator if compressor is rotary vane or screw type. Check lube rate if reciprocating compressor. Install coarse coalescer for prefiltration. Check flow direction (See page 1). Drain more frequently. Check element if excessive (7-10 psid or above), replace element if necessary. Check o-ring in element. Use finer grade. Close valve. Check seals on valve. Relocate filter or install additional filter. Install, clean, replace or relocate aftercooler, or relocate filter. Install grade C filter downstream of dryer.
Short element life	Excessive contamination. High compression temperatures causing varnish/carbon formation. Oil/water emulsion overloading element. High viscosity oil or freeze-up due to low ambient temperature.	Install coarse particulate filter immediately upstream of existing filter. Use compression lubricant with good temperature stability. Lower lube rates where possible. Use coarser grade filter element. Inspect moisture separator. Remove water with better separation. Raise ambient temperatures. Heat trace inlet piping and housing.