

# Ceramic Membrane Filtration System for Industrial Parts Washers



**HILCO Model 21CM01  
Nominal 120 GPD System**

The new dense pack ceramic membrane crossflow technology is the ideal way to maintain your parts washing operation and keep it in superior condition.

Continuous recycling through the ceramic membrane keeps the wash solution clean and free of oil, fine particles, metals, and other contaminants which in turn, improves product yield. The non-complex design is easy to install, and requires minimal supervision to operate and maintain. It not only maintains the integrity of the process but also extends the useful life of the fluid, reduces labor, and reduces new fluid purchases. The resulting highly concentrated contaminants allow for convenient hauling and lower waste disposal costs.

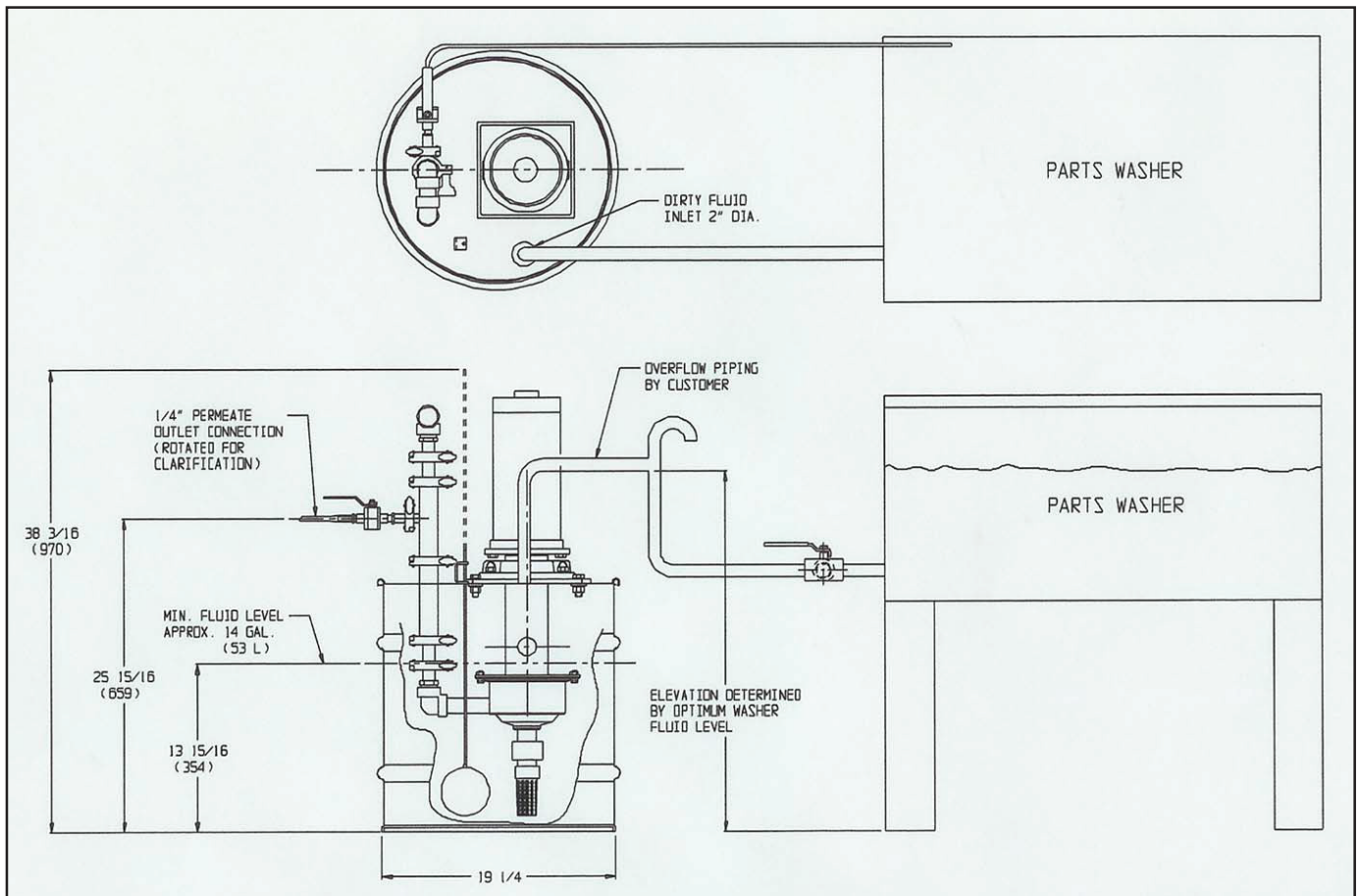
Because of the new ceramic technology, the membrane may be used for high temperature applications and does not remove soaps, rust inhibitors, and other additives, thereby significantly reducing chemical usage.

## **Features and Benefits**

- Compact design
- Broad pH range of 2 - 13
- May be steam cleaned
- Chemically robust (compatible with aqueous and nonaqueous steams)
- Durable ceramic extends life of membrane
- Immune to chlorine attack
- Extended life prior to cleaning
- High temperature operation to 300° F
- Larger-capacity skid systems available

# HILCO Ceramic Membrane Filtration System

## Typical Parts Washer Installation



NOTE: 3/4 HP TEFC Motor, 115V-60Hz-1pH

*The Hilliard Corporation reserves the right to change specifications and dimensions at any time.  
Please contact the factory for the most current information.*

**The Hilliard Corporation**  
100 West Fourth Street  
Elmira, New York, USA 14902-1504  
Phone: 607-733-7121  
Fax: 607-733-0928  
<http://www.hilliardcorp.com>

Your Local Representative:

**East Coast Filter, Inc.**  
INDUSTRIAL FILTRATION & WASTEWATER TREATMENT  
Wrentham, MA  
774-847-9540  
[sales@eastcoastfilter.com](mailto:sales@eastcoastfilter.com)

  
**Hilliard**  
HILCO® DIVISION™

CMW-1

THC-500-08/06