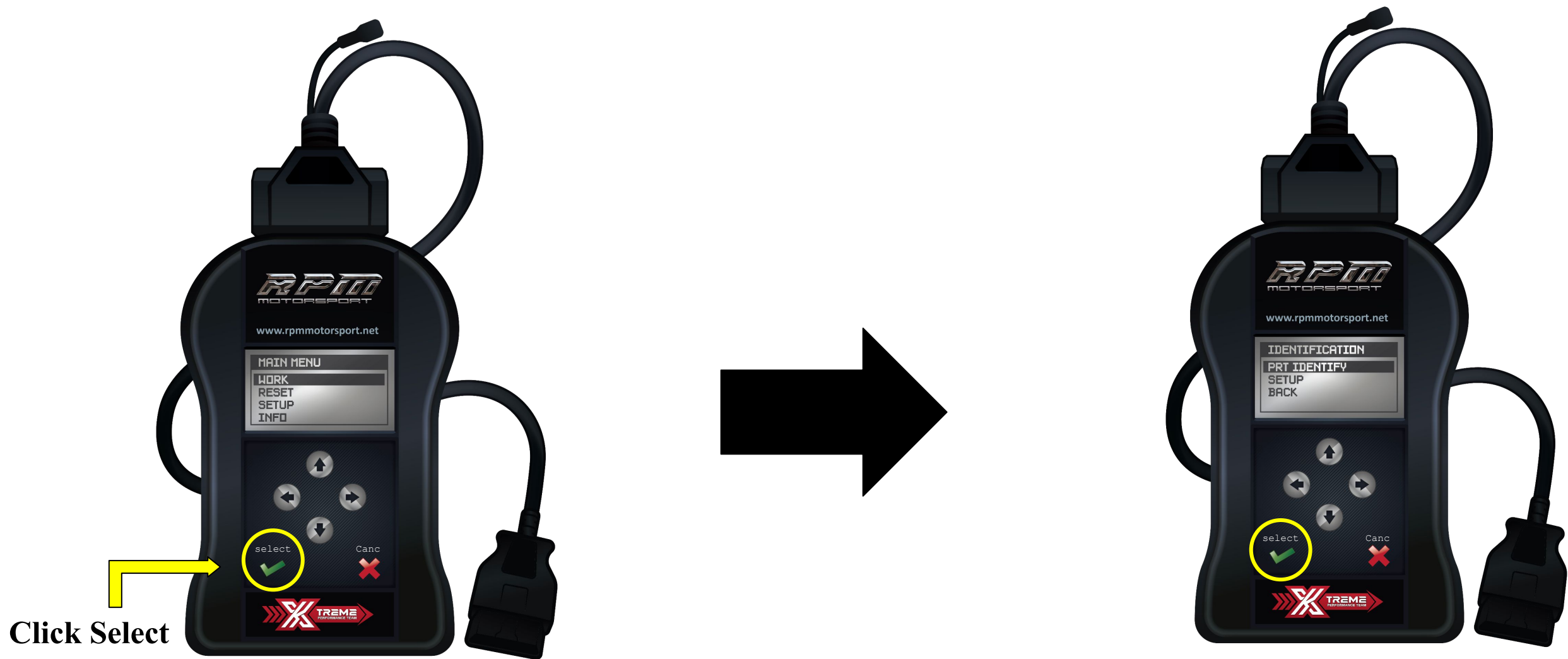


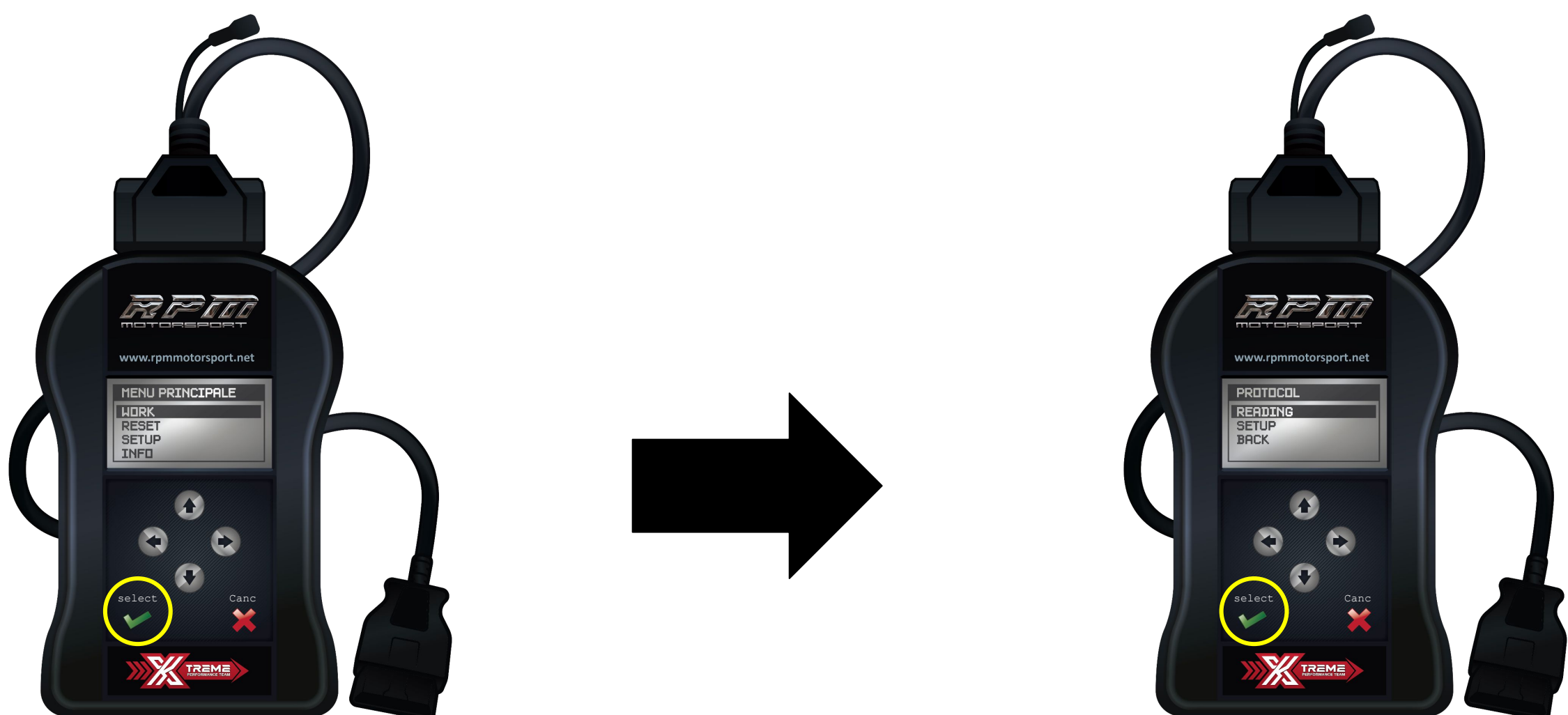


## PROTOCOL IDENTIFICATION AND READING

- A) Connect the OBDII/diagnostic cable to the device and to the plug of the vehicle\*.
- B) Wait for the correct identification of the communication protocol for the vehicle.  
Follow the guided procedure on the display of the unit.



- C) After the correct identification of the protocol proceed with the reading (or identification only) of the software stored in the vehicle ECU/DME, always following the guided procedure on the display of the unit.



**\*Please unplug the XTREME Performance Tool device from your vehicle before plugging the USB cable to your PC.**





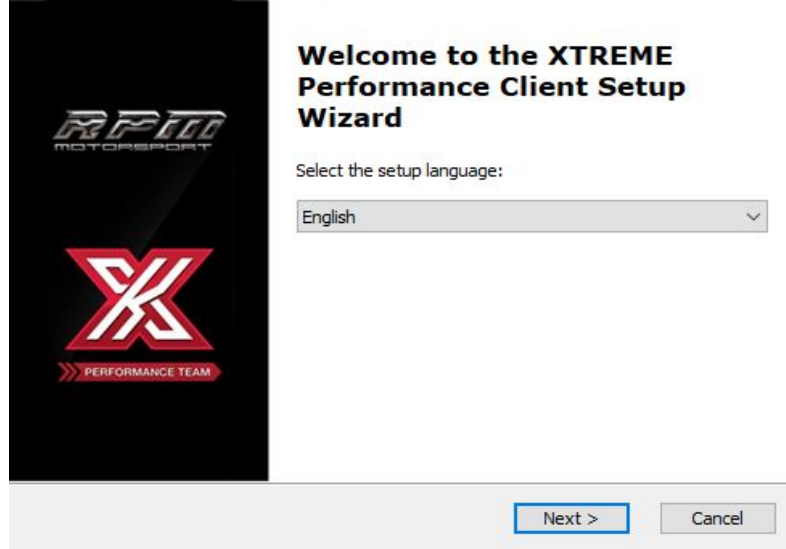
## SOFTWARE INSTALLATION

[\(CLICK TO DOWNLOAD\)](#)

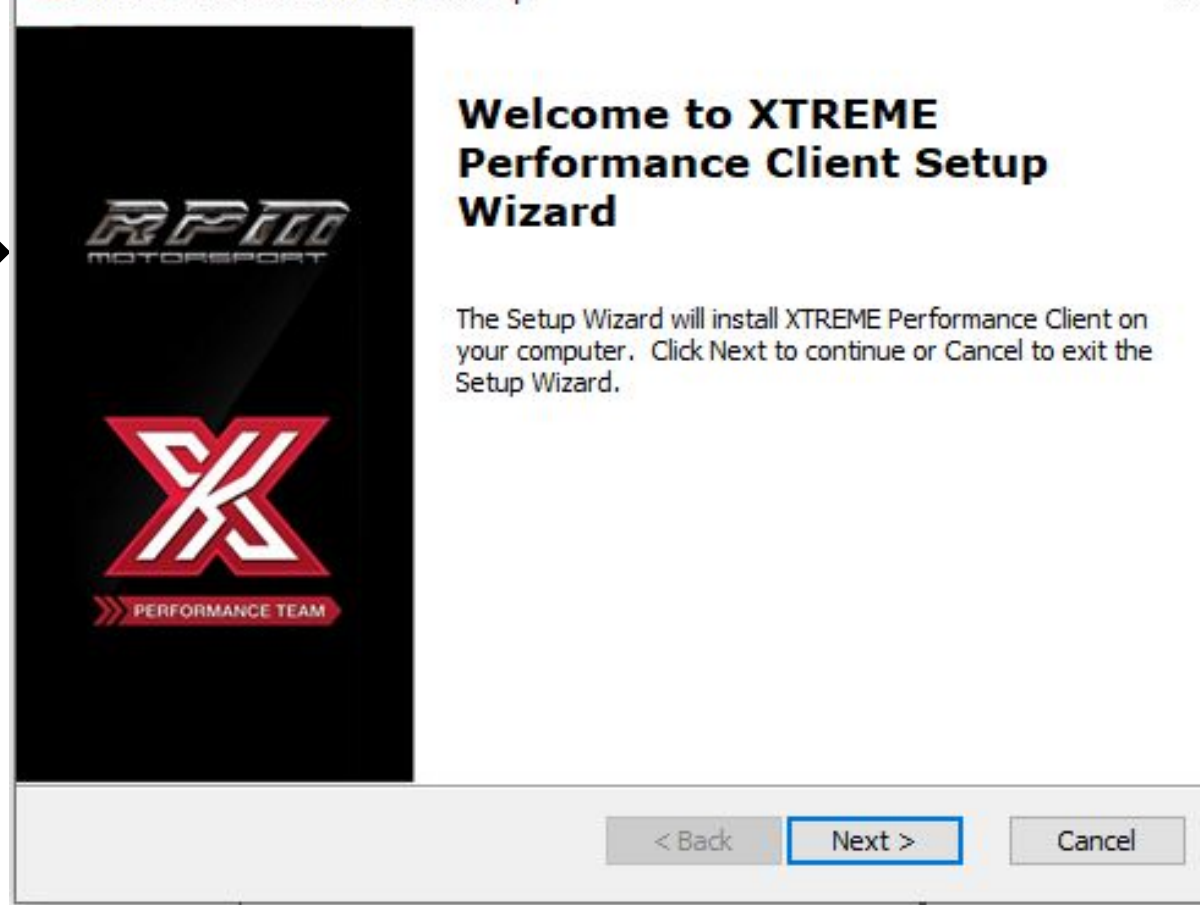
Before installing the software, ensure you have the following:

- Windows 7/8/8.1/10/11 (32-64BIT).
- Latest Windows Update.
- Antivirus software turned off.

1. XTREME Performance Client Setup

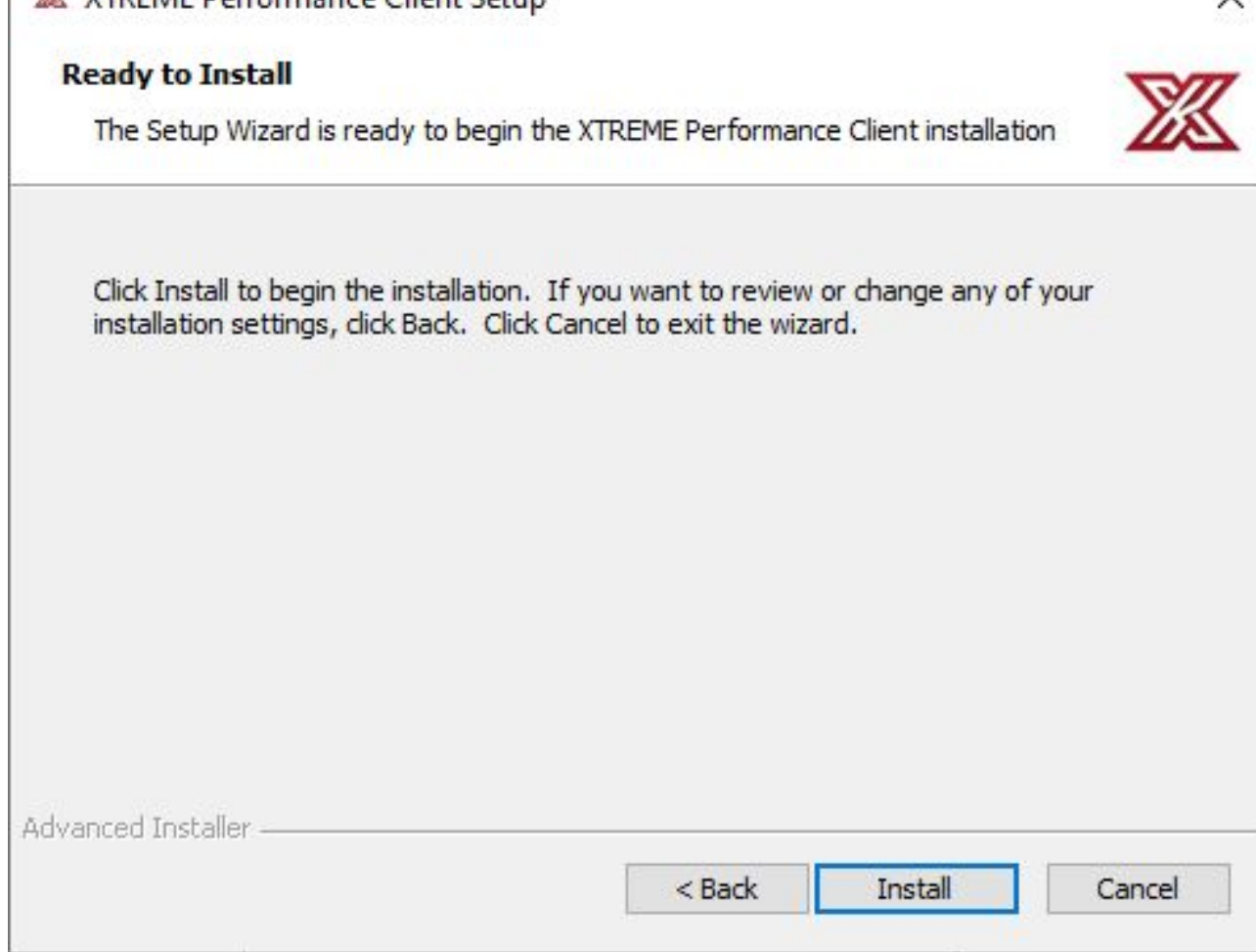


2. XTREME Performance Client Setup

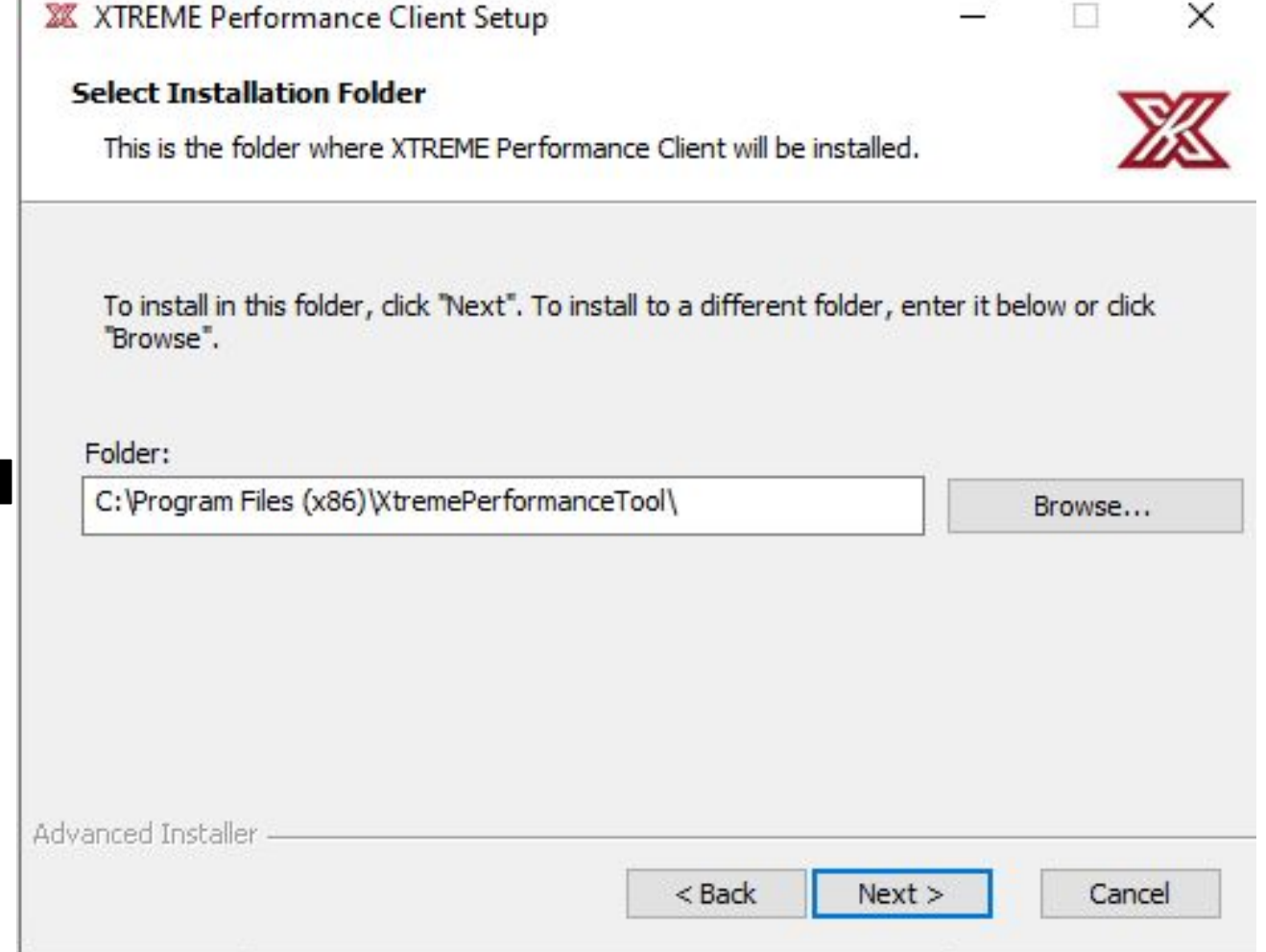


Select the directory where the XTREME Performance software will be installed and follow the setup procedure by clicking NEXT.

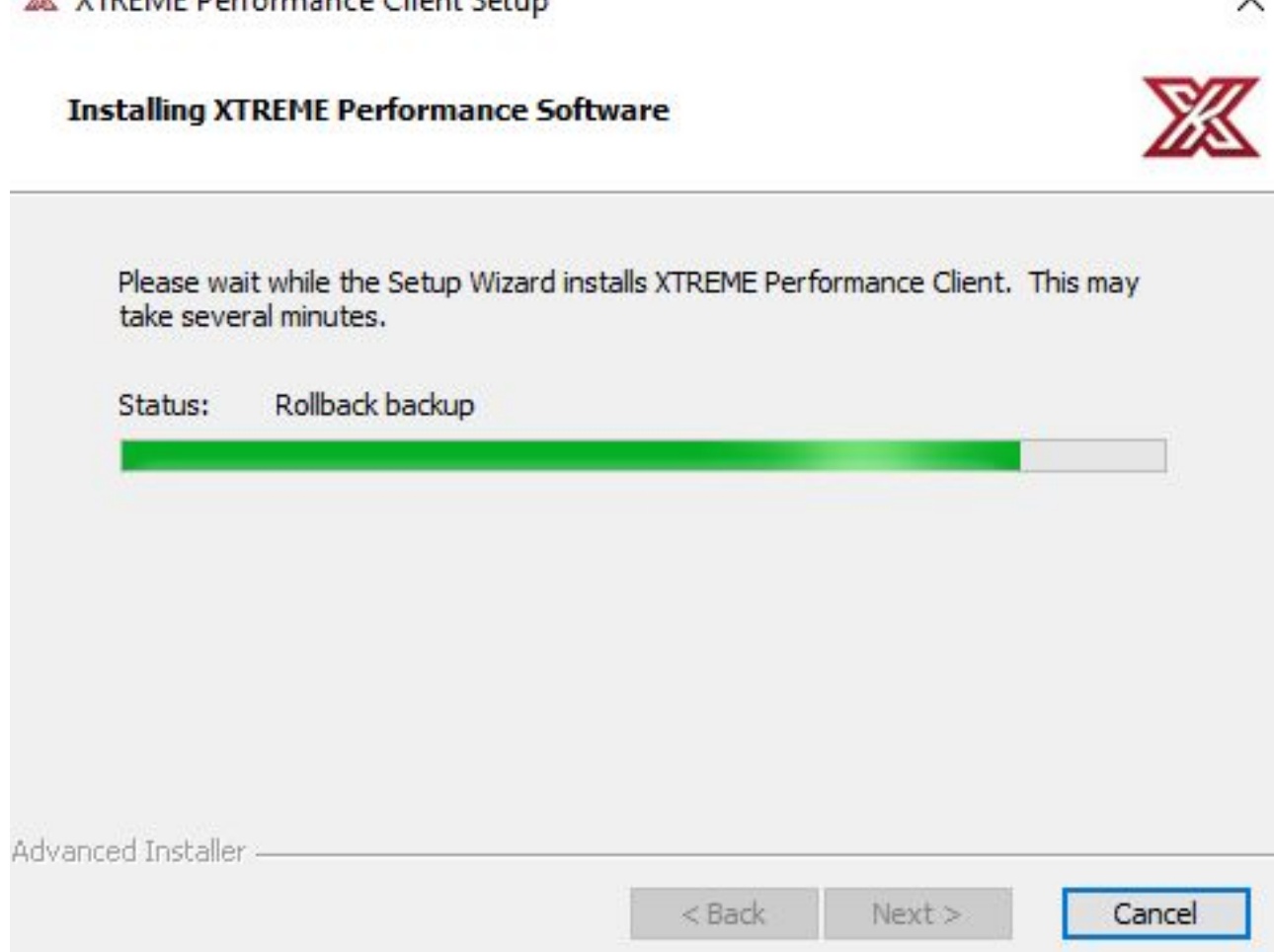
4. XTREME Performance Client Setup



3. XTREME Performance Client Setup



5. XTREME Performance Client Setup



6. XTREME Performance Client Setup



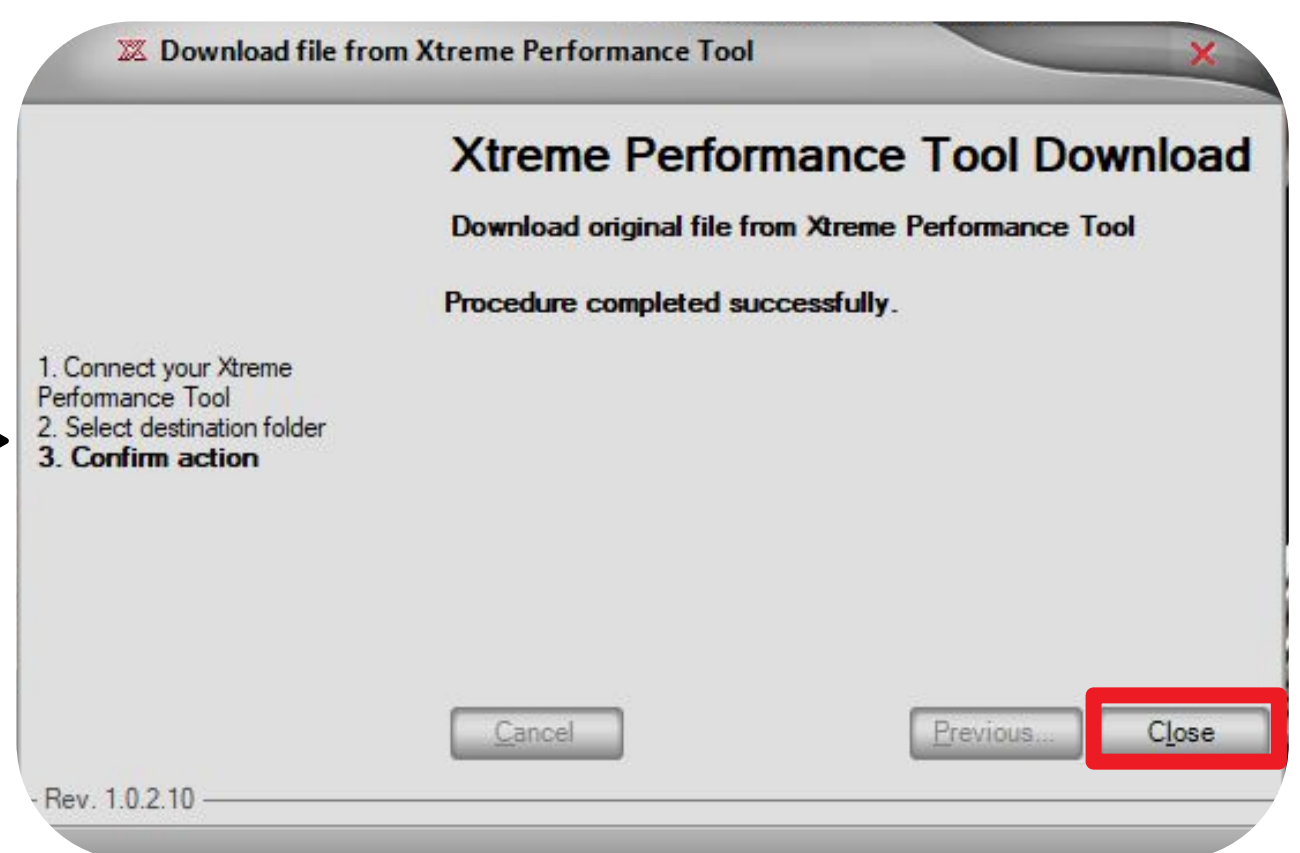
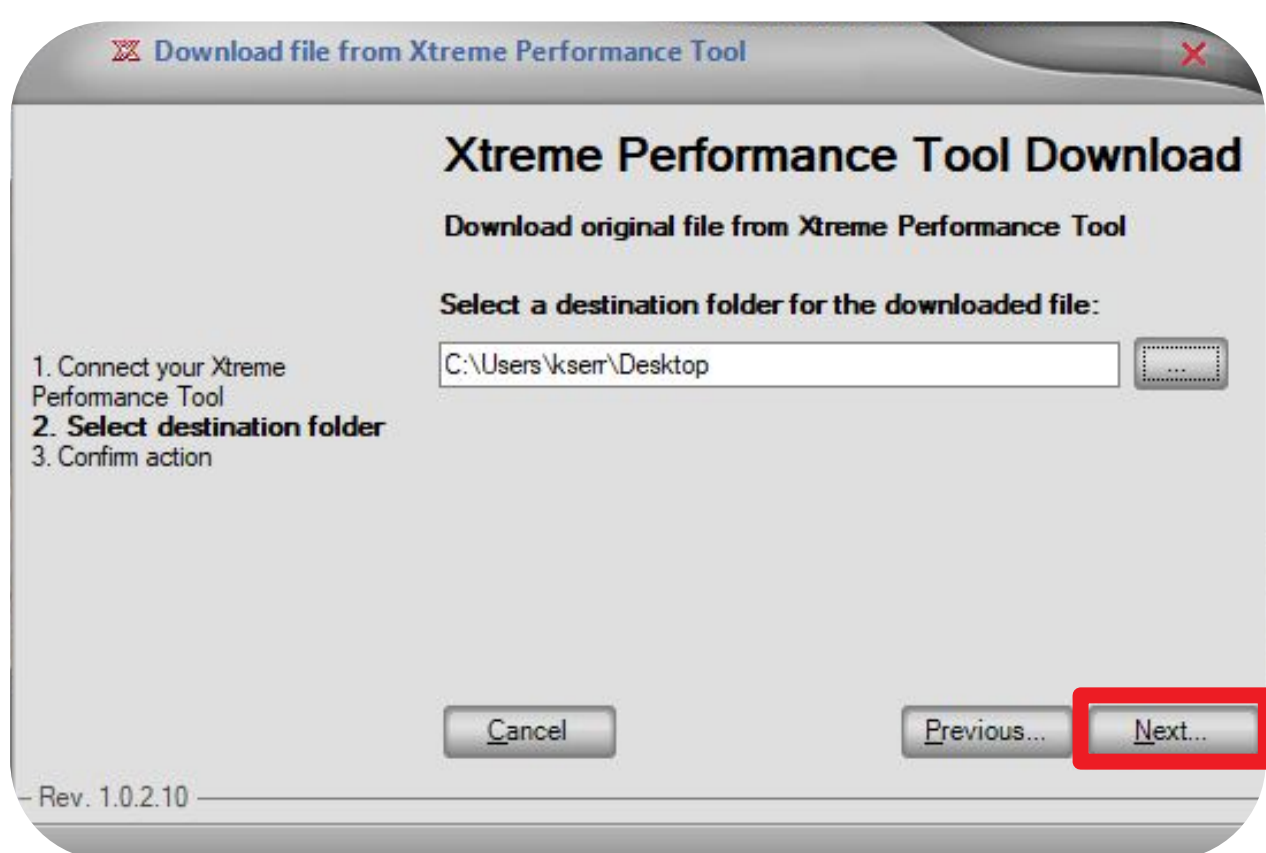
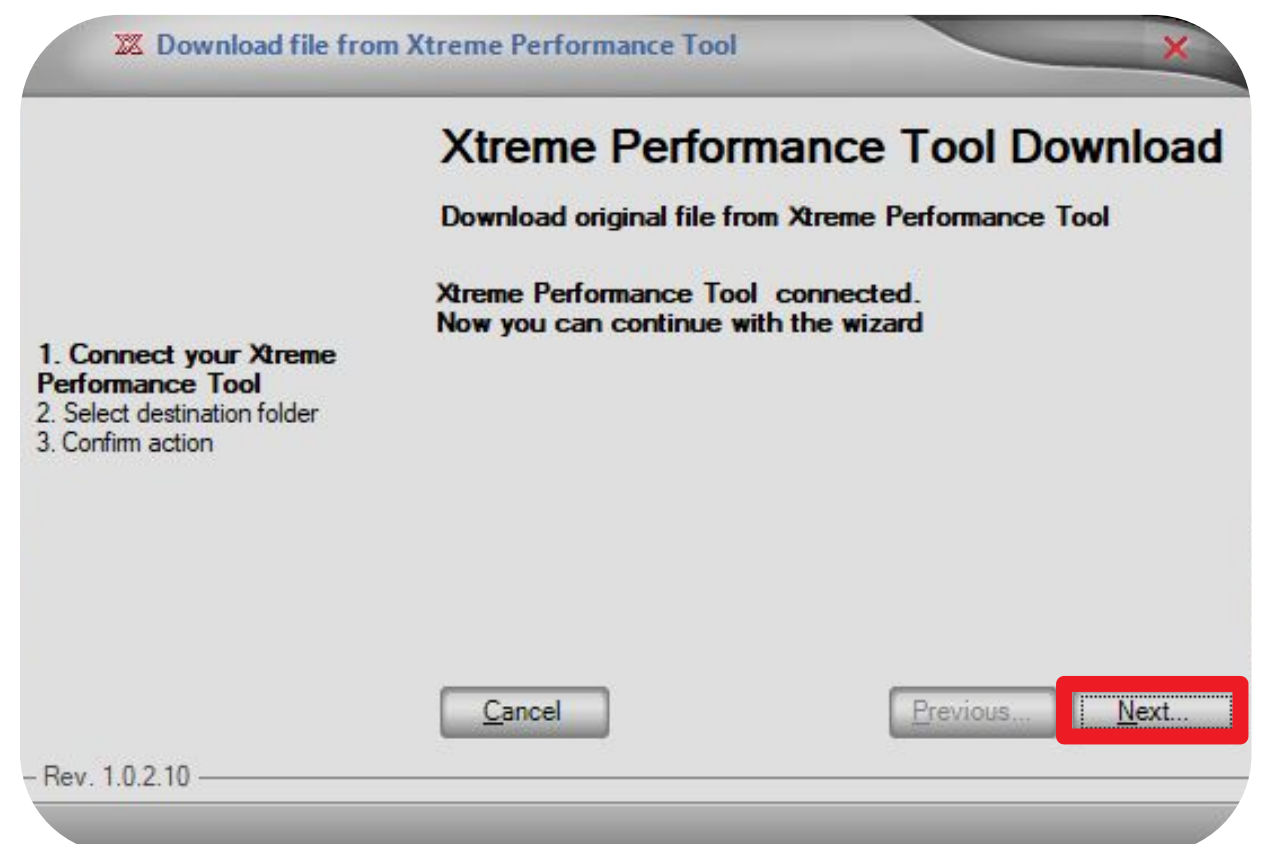
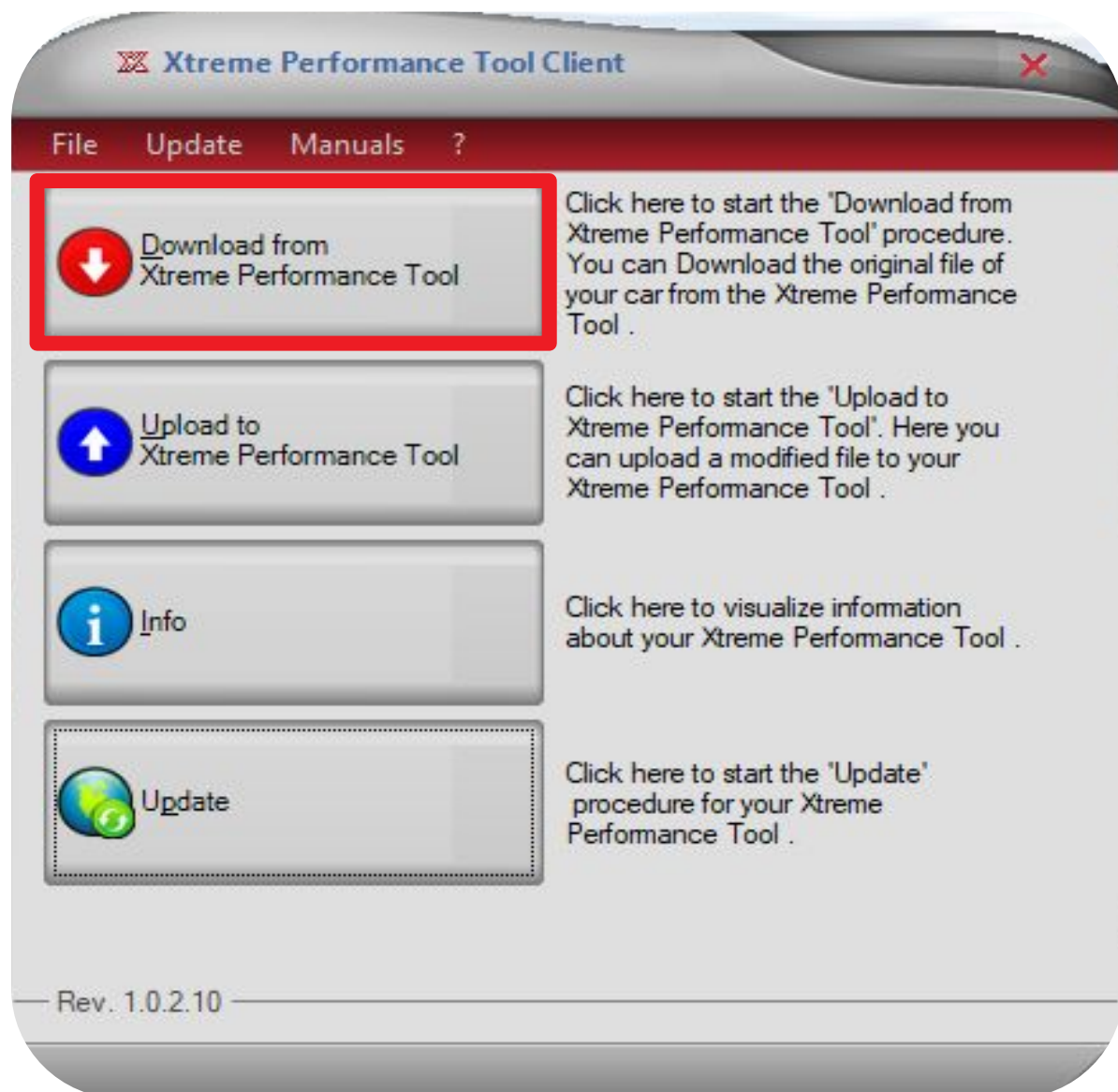
The software is now currently installed and ready to be used.  
After the first installation, connect the XTREME Performance Tool via USB to the PC and perform the mandatory system update



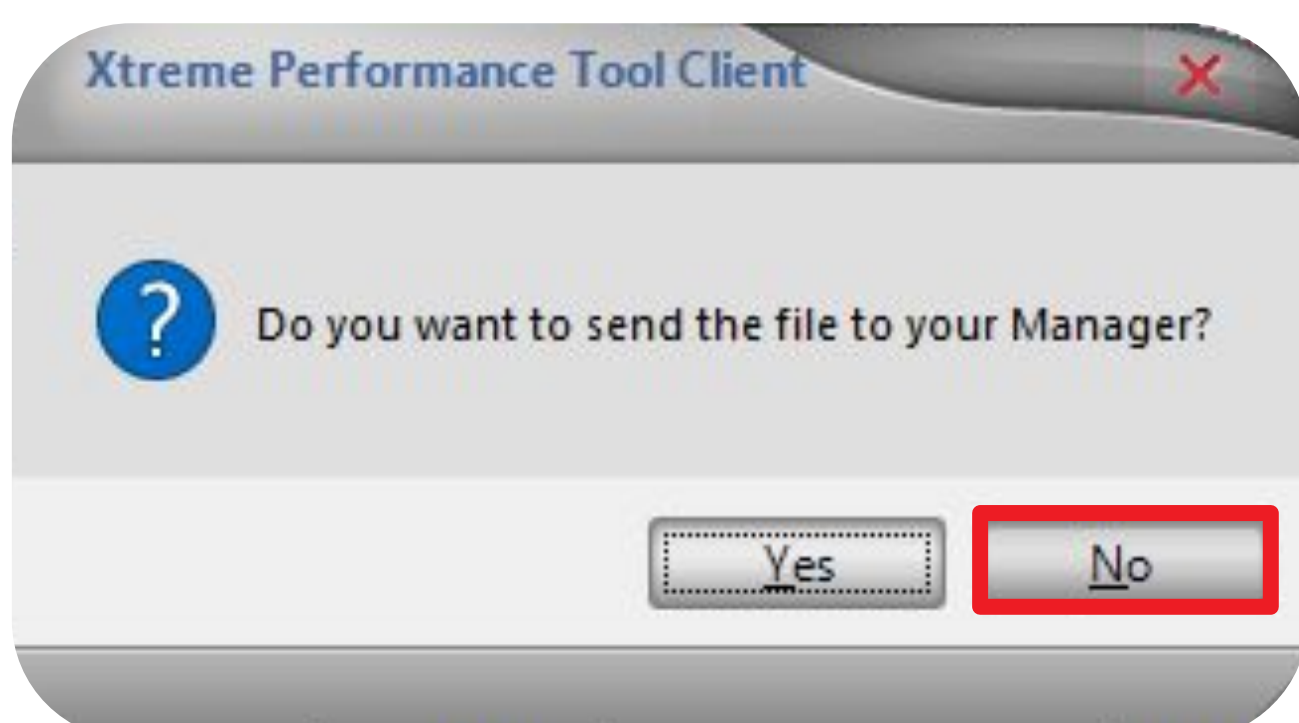


## DOWNLOADING THE ORIGINAL FILE

A) Plug the device to the USB port and press the button “Xtreme Performance Tool”.  
Follow the guided procedure.



B) Do not send file via Tool. **Send file as an attachment in a reply to our e-mail.**



File Should look like this: MYGFile.fpf

