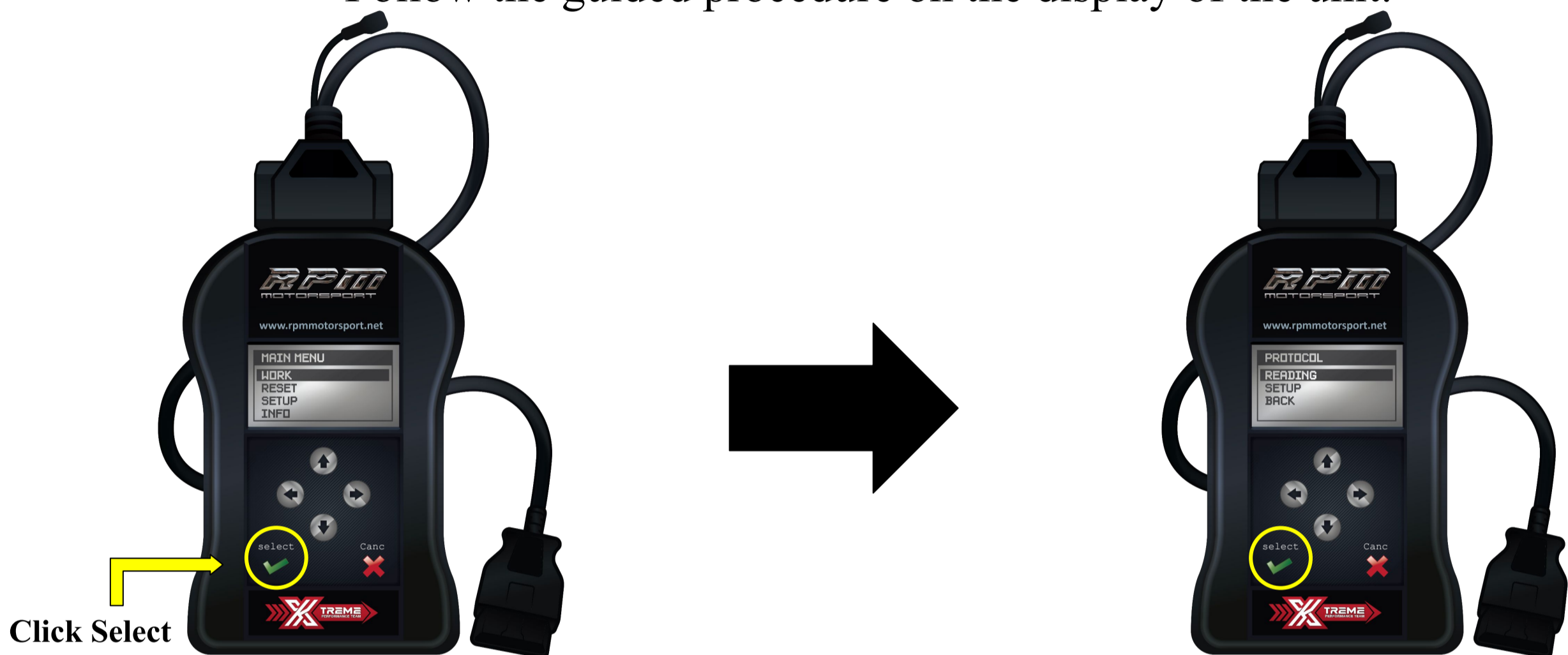


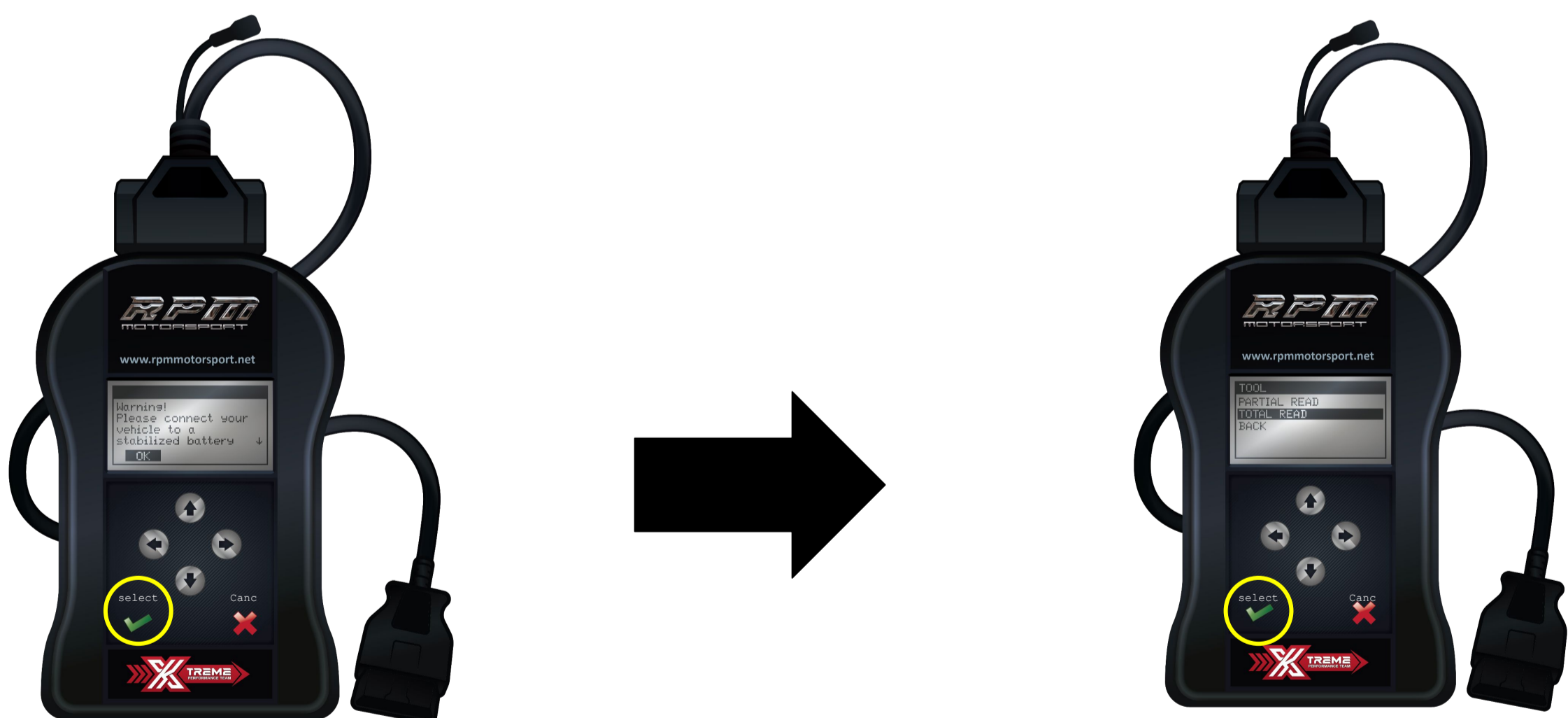


MSS60 MSS65 PROTOCOL IDENTIFICATION TOTAL READ INSTRUCTIONS

- A) Connect the OBDII/diagnostic cable to the device and to the plug of the vehicle*.
- B) Wait for the correct identification of the communication protocol for the vehicle.
Follow the guided procedure on the display of the unit.



- C) After the correct identification of the protocol proceed with the reading (or identification only) of the software stored in the vehicle ECU/DME, always following the guided procedure on the display of the unit.



Note: The "Total Read" may take up to 1 hour to complete. A Total Read is only required if you have already done a Partial Read and sent your file to Rpm Motorsport and we have informed you that a Total Read is necessary.