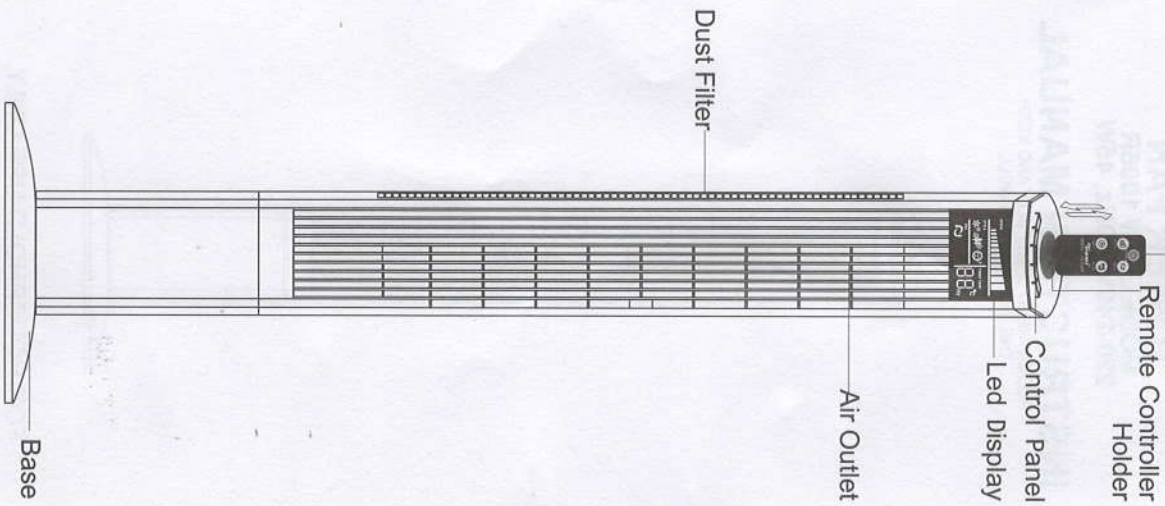


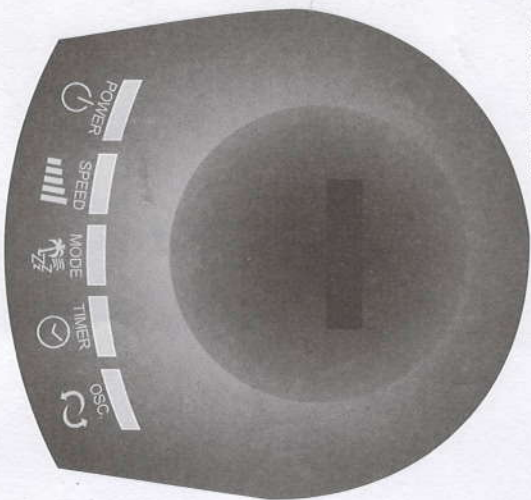
PARTS FIGURE



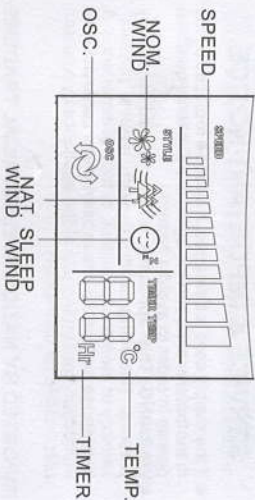
Remote Controller: Put the remote controller to the holder shown in above illustration when the remote controller is not use.



Controller Panel:



LED Indicator:
LED display board: After plugging in, it display room temp. (Celsius)



FUNCTION KEY

All function key of remote controller & control panel are similar

ON/OFF key

The key is for switching on/off the fan. The fan will start at **NORMAL** mode.
 Press this key to switch off/on.

SPEED key

After the fan has started, press this key to select the required speed. The sequence is M, H → L, M... When this key is being pushed repeatedly, The state will be displayed on LED.

TIMER key

After the fan has started, press this key to select the fan timing. The sequence is 1Hr, 2Hr, 3Hr, 4Hr, 5Hr, 6Hr, 7Hr, 8Hr, 9Hr, 10Hr, 11Hr, 12Hr → room temp. → 1Hr... When this key is being pushed repeatedly, the state will display on LED.
 Do not press the timer key when the fan requires to operate continuously.

MODE key

Press this key to select the mode. The sequence is in **NATURAL, SLEEP, NORMAL → NATURAL...**, when this key is being pushed repeatedly. The state will display on LED.

NATURAL WIND

The fan blows at the programmed speed, imitating the wind of nature

SLEEP WIND

The fan blows at the programmed speed, imitating the wind of nature, It will deduce speed automatically one hours later.

NORMAL WIND

The fan blows continuously at the selected speed.

OSC. key

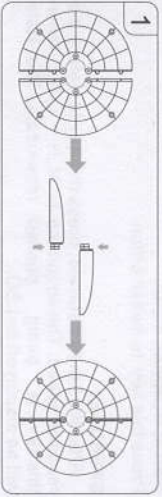
After the fan has started, press this key to select osc. ON/OFF mode.

REMOTE CONTROLLER OPERATION

- (1) Point the remote controller at the receiver and press the desired key.
- (2) The remote controller works at a distance of up to five metres.
- (3) Avoid using the remote control under sunlight which will affect the receiver.
- (4) The batteries must be removed from the remote controller before it is scrapped, and that they are disposed of safely.

HOW TO ASSEMBLE

1. Take the chassis, fan body from the packing box and combine two parts of the chassis.
2. Pass the power cord through the flute, then insert the fan body in the chassis.
3. Fix the fan body on the chassis with the screw.



CLEANING

Be sure to unplug from the electrical supply socket before cleaning.

Plastic parts should be cleaned with mild soap and a damp cloth or sponge. Thoroughly to remove soap film with clean water.

Be sure not to let water or other liquid enter the motor housing.



SERVICE & IMPORTANT NOTICE

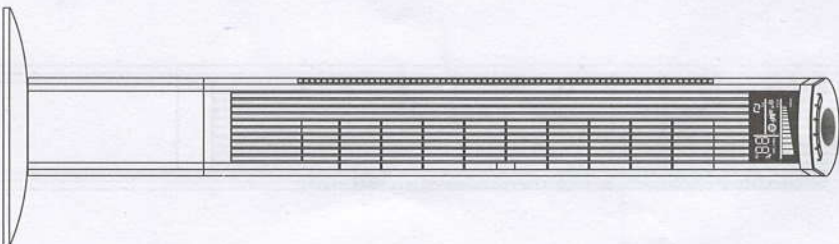
- If the supply cord is damaged, it must be replaced by the manufacturer or its service agent or a similarly qualified person in order to avoid a hazard.
- **WARNING:** This appliance is not intended for use by persons (including children) with reduced physical, sensory or mental capabilities, or lack of experience & knowledge, unless they have been given supervision or instruction concerning use of the appliance by a person responsible for their safety.

IMPORTED BY NATIONAL ELECTRICAL TRADERS

Toyomi®

TOWER FAN
MODEL: TW 1006R
220-240V~50Hz, 45W

INSTRUCTION MANUAL
PLEASE READ CAREFULLY AND KEEP
THE INSTRUCTION WELL.



FOR HOUSEHOLD USE ONLY.