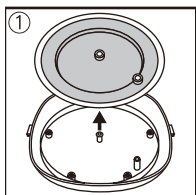
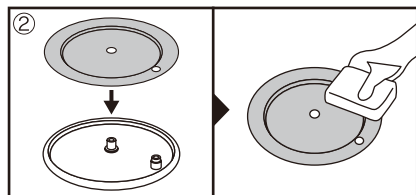


IMPORTANT SAFEGUARDS

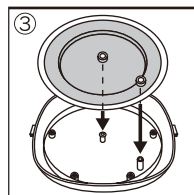
1. Read all instructions carefully.
2. Do not touch hot surfaces. Use handles of knob.
3. To protect electrical shock, do not immerse cord, plugs and rice cooker except lid and inner pot in water or other liquid.
4. Close supervision is necessary when any appliance is used by or near children.
5. Unplug from outlet when not in use and before cleaning. Allow it to cool before putting on or taking off any parts.
6. Any use of accessory attachments not recommended by the manufacturer may cause hazards.
7. Not for outdoor use.
8. Do not dangle the cord or hang over the edge of table or counter tops, please avoid hot surfaces.
9. Do not place appliance on or near gas or electric burners, on a stove top or in an oven.
10. Use extreme caution when moving or handling appliances containing hot oil or other liquids.
11. Always attach plug to appliances first, then plug cord into the wall outlet. To disconnect, turn any control to OFF, and then remove plug for wall outlet.



1. The inner plate of the cover is detachable for washing. You may pinch the middle rubber and pull them out or using the rice spoon to pull out from the edge.



2. Remove the silicone ring from the plate and clean with mild detergent. Dry the plate before placing back the silicone.



3. Place the inner plate back to the cover by aligning with the steam vent.

SERVICE & IMPORTANT NOTICE

- If the supply cord is damaged, it must be replaced by a special cord or assembly available from the manufacturer or its service agent.
- **WARNING:** This appliance is not intended for use by persons (including children) with reduced physical, sensory or mental capabilities, or lack of experience and knowledge, unless they have been given supervision or instruction concerning use of the appliance by a person responsible for their safety.

Toyomi®

MULTI-FUNCTION MINI RICE COOKER

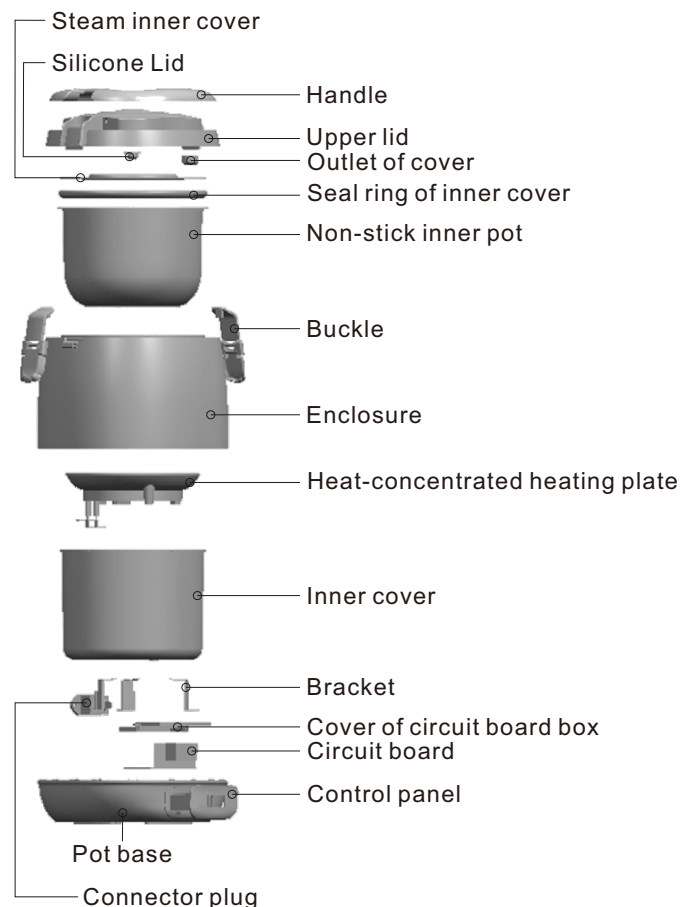
INSTRUCTION MANUAL

Please read carefully and keep the instruction well

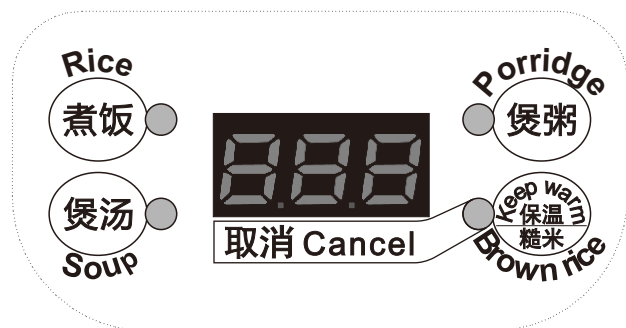


MODEL: RC 818
220V-240V~50/60Hz,
POWER:300W
CAPACITY: 0.6L

PARTS NAME



CONTROL PANEL



USING THE MULTI-FUNCTION MINI RICE COOKER

After plugging in, the screen will show "000", "STAND-BY" mode is on. Press the under-mentioned button to select the cooking function.

1. Select "Rice" function: the indicator for "Rice" will be flashing and screen will show "---". Wait for 5 seconds the system will start to cook automatically. Upon completion, it will stop and automatically goes to keep warm mode.

2. Select "Porridge" function: the indicator light for "Porridge" will be flashing and the screen will show "120" (cooking time for porridge is 120mins). Wait for 5 seconds the system will start to cook automatically. Upon completion, it will stop and automatically goes to keep warm mode.

3. Select "Soup" function: the indicator for "Soup" will be flashing and the screen will show "90" (cooking time for soup is 90mins). Wait for 5 seconds the system will start to cook automatically.

4. On "STAND-BY" mode, press "Keep Warm/Brown rice/Cancel" function button continuously, the indicator will show: bb→---→000→bb→..., represent "Keep warm"→"Brown rice"→"Cancel"→"Keep warm"→...mode respectively, wait for 5 seconds, the system will start the mode automatically.

5. To cancel the wrong selection or change selection, press the "Keep Warm/Brown rice/Cancel" button. It will cancel all operations, the screen will show "000", "STAND-BY" mode is on.

QUICK CLEANING TIP

Add ½ cup of water and a small amount of liquid dish washer to the inner pot. Select the rice function to cook and allow heating for 10 minutes. Cool rinse well and dry completely before re-using.