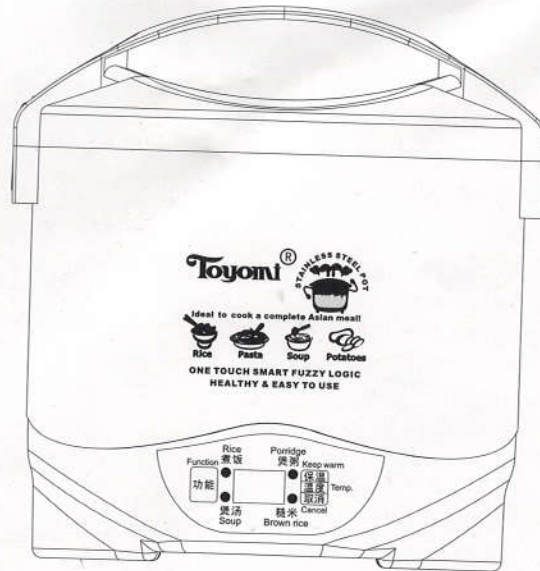


Toyomi®

ELECTRIC RICE COOKER/ WARMER WITH S.S. POT & S.S. STEAMER

INSTRUCTION MANUAL

Please read carefully and keep the instruction well



MODEL: RC 616
220-240V~50/60Hz
POWER: 300W
CAPACITY: 0.6L

QUICK CLEANING TIP

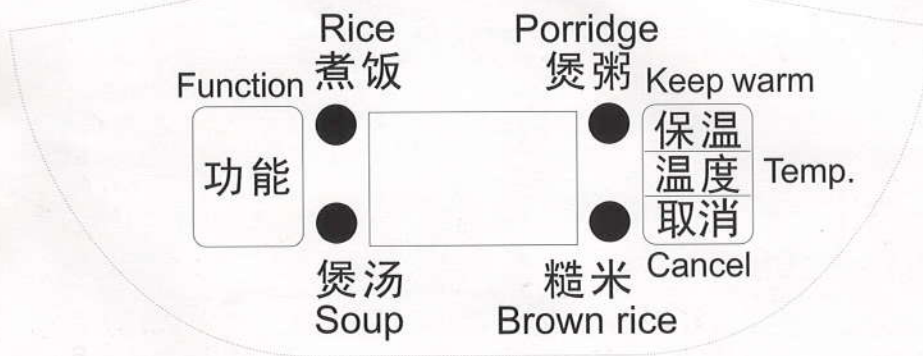
Add ½ cup of water and a small amount of liquid dish washer to the inner pot.

Select the rice function to cook and allow heating for 10 minutes. Cool rinse well and dry completely before re-using.

PARTS NAME



CONTROL PANEL



OPERATION

FUNCTION KEY ON

Once the power is on, there will be a beep sound and the function indicator blue light will be on. Press the "Function" key continuously, the relative indicator of function will be flashing. For example:

1. Select "Rice": the indicator of "Rice" will flash, and the screen will show "--", wait for 5 seconds, the "Rice" mode will start automatically, the indicator of "Rice" will light on. Upon completion, it will stop and automatically go to keep warm mode.

2. Select "Porridge": the indicator light of "Porridge" will flash, and the screen will show "2.0" (cooking time for porridge is 2.0hrs), wait for 5 seconds, the "Porridge" mode will start automatically, the indicator of "Porridge" will light on. Upon completion, it will stop and automatically go to keep warm mode.

3. Select "Soup": the indicator for "Soup" will light up and the screen will show "1.5" (cooking time for soup is 1.5hrs), wait for 5 seconds, the "Soup" mode will start automatically, the indicator of "Soup" will light on. Upon completion, it will stop and automatically go to keep warm mode.

4. Select "Brown Rice": the indicator for "Brown Rice" will light up, and the screen will show "--", wait for 5 seconds, the "Brown Rice" mode will start automatically, the indicator of "Brown Rice" will light on. Upon completion, it will stop and automatically go to keep warm mode.

5. To cancel the wrong selection or change selection press the "Keep warm/Temp./Cancel" button. It will cancel operation.

KEEP WARM/TEMP./CANCEL KEY

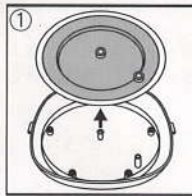
1. On "STAND-BY" mode, press "Keep Warm/Brown rice/ Cancel" function button, the screen will show: 12, wait for 5 seconds, the "Keep warm" mode will start automatically, the screen will show: 12→60→12...continuously, it indicate the Keep warm time is 12 hrs. and the Keep warm temp. is 60°C.

2. On "STAND-BY" mode, press "Keep Warm/Brown rice/ Cancel" function button continuously, the screen will show: 12→60→61→62→63→64→65→66→67→68→69→70→71→72→73→74→75→40→41→42→43→44→45→46→47→48→49→50→51→52→53→54→55→56→57→58→59→60→61→62→....., wait for 5 seconds, the "Keep warm" mode will start automatically, the screen will show: 12→TEMP. SELECTED→12....

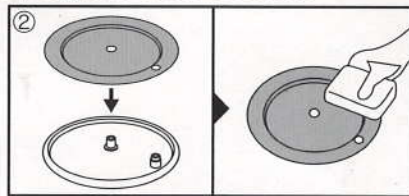
For example, if you want to keep warm 12 Hrs on the temperature of 70°C, on "STAND-BY" mode, press "Keep Warm/Brown rice/ Cancel" continuously for 12 time, wait for 5 seconds, the "Keep warm" mode will start automatically, the screen will show: 12→70→12..., after 1hour the screen will show: 11→70→11....

IMPORTANT SAFEGUARDS

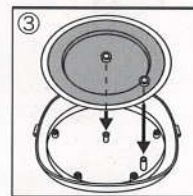
1. Read all instructions carefully.
2. Do not touch hot surfaces. Use handles of knob.
3. To protect electrical shock, except lid and inner pot, do not immerse cord, plugs and rice cooker in water or other liquid.
4. Close supervision is necessary when any appliance is used by or near children.
5. Unplug from outlet when not in use and before cleaning. Allow it to cool before putting on or taking off any parts.
6. Any use of accessory attachments not recommended by the manufacturer may cause hazards.
7. Not for outdoor use.
8. Do not dangle the cord or hang over the edge of table or counter tops, please avoid hot surfaces.
9. Do not place appliance on or near gas or electric burners, on a stove top or in an oven.
10. Use extreme caution when moving or handling appliances containing hot oil or other liquids.
11. Always attach plug to appliances first, then plug cord into the wall outlet. To disconnect, turn any control to OFF, and then remove plug for wall outlet.



1. The inner plate of the cover is detachable for washing. You may pinch the middle rubber and pull them out or using the rice spoon to pull out from the edge.



2. Remove the silicone ring from the plate and clean with mild detergent. Dry the plate before placing back the silicone.



3. Place the inner plate back to the cover by aligning with the steam vent.

SERVICE & IMPORTANT NOTICE

- If the supply cord is damaged, it must be replaced by a special cord or assembly available from the manufacturer or its service agent.
- **WARNING:** This appliance is not intended for use by persons (including children) with reduce physical, sensory or mental capabilities, or lack of experience and knowledge, unless they have been given supervision or instruction concerning use of the appliance by a person responsible for their safety.

IMPORTED BY NATIONAL ELECTRICAL TRADERS