

SERVICE & IMPORTANT NOTICE

- It is the responsibility of the user to ensure that the manufacturer's or its service agent's or a qualified person's advice is followed in order to avoid accidents.
- WARNING:** This appliance is not intended for use by persons (including children) with reduced physical, sensory, or mental capabilities, or lack of experience and knowledge, unless they have been given supervision or instruction concerning use of the appliance by a person responsible for their safety.

Toyon®

INSTRUCTION MANUAL

Please read carefully and keep the instruction well



360° OSCILLATION ELECTRIC REMOTE STAND FAN
MODEL: FS 7908E
176-240-7908E.C6W

IMPORTED BY NATIONAL ELECTRICAL TRADES

1. SAFETY GUIDELINES

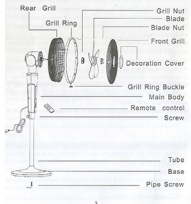
- This appliance is not intended for use by persons (including children), with reduced physical, sensory or mental capabilities, or lack of experience and knowledge, unless they have been given supervision or instruction concerning use of the appliance by a person responsible for their safety. Children should be supervised to ensure that they do not play with the appliance.
- Do not tamper with or modify. It must be returned to the manufacturer, its service agent or a qualified person in order to avoid a hazard.
- The user must use qualified socket with security certification, or it may cause fire.
- Please do not put any object on the fan body.
- Please avoid any shocks, vibrations or concussions to the fan.
- Please do not put the fan under the power socket when use the fan.
- Please do not use the fan in the shower.
- Please put the power line correctly in case 360 cover the cord.
- Please put the fan on the flat and stable ground before using the fan please do not use the fan in a shower, bathtub or near environment, such as bath room, airport or swimming pool etc.
- Please do not put flammable, explosive materials or objects around the machine, and please do not use the fan in the environment that generates air and dust, keep the machine away from heat sources such as fire and heating.
- Please do not put your water into the machine or hang wet clothes over the machine as to avoid current leakage and electric shock. It is not put flammable materials and wet clothes around on the fan or allow it to be in risk of fire or electric shock.
- Please do not insert conductive object into the front and back on sockets of the machine to avoid the risk of electric shock.
- Please shut down the machine before the user leaves the machine so as to

2. FEATURES

- Timing: 1, 4, 8, 30h.
- Easy control with remote control.
- Wind modes.
- Wind modes: normal, sleep.
- WIND control panel, LED display.

4. Oscillation angle: 90° 180° 270° 360° 180° 360°
 5. Vertical oscillation with hand: 0° 0° 10° 20° 30° 40° 50°
 60° 70° 80° 90°
 Power on/off: buttons sound alarm power on/off B: button B: power off

3. PART FIGURE

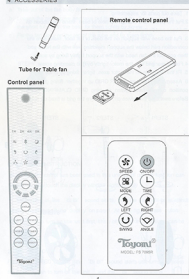


5. INSTALLATION

- Take out parts before assembling.
- Put the power cover through the hole of base, stand the support on the base and fix them tightly by screw.
- Put the base with support on the disk or flat floor, make sure the connection and leave the support existing well on the base and prevent the fan head with the support tightly being to swing.
- Fix the fan grid with the motor light for grid-oscillating screen.
- Fix the fan blades on the motor axes, tightly fixing by blade screw.
- Assemble grid ring and HEAD-GARD top together. Bring grid ring into position, assembly, and tighten on using GRID-CLAMPING SCREWS before stopping the device on, make sure the grid is fixed on tightly with a plastic brush.
- Check off the power if not:
 - Check off the power if not:
 - Take the fan for a long period time, pull out the plug, shake the fan well to prevent it away from dust and keep it in the dry, well-ventilated and clean place.
 - If the power cord was damaged or the fan was in problem, please take the fan to equipped repair station of our company and the specialist do the work of repairing, you can also contact with our after-sale center for help. But please do not disassemble, repair or replace with unoriginal accessories without security certification.
 - Product maintenance should be carried out in our appointed maintenance station.

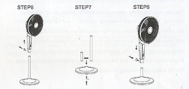


4. ACCESSORIES



Transfer from stand fan to table fan

- Take out of the fan body from the tube after loosening the butterfly screw.
- Loosen the pipe screw and take out the fan body, then assemble the short tubes with the base to them tightly by screw.
- Fix the fan body on the top of the base and fix them tightly.



OPERATION INSTRUCTION

- Touch screen control has been used in this unit, all of "off" function can be operated by touch the display screen edge slightly.
- When plug in the "36° 90°" sound alarm, then the unit will be at standby status and there is no display on panel. At this time, press button "ON/OFF" to turn on the unit first, then other before functions can be available.
 - ON SPEED**
Press ON SPEED ONCE, the "36°" sound alarm will turn on, press the button again to turn off the "36°" and the "90°" sound alarm.

3. SPEED

Press ON SPEED ONCE, the selected fan mode industry will go on with the once opening a MODE to LOSEE speed levels. Press ON SPEED TWICE FOR LOW, MIDDLE and HIGH speed selection.

4. MODE

The fan has 3 setting modes: normal, NOISE, sleep. It will change as following: normal -> noise -> sleep -> normal... and the display will show the mode type constantly, and the indicator will show on display, the grid gives a constant fan speed depending on the speed setting selected when a normal mode. The remote will change the mode and speed once nature mode is chosen, and the unit enters in a sleep mode and reduces the fan speed once sleeping mode is chosen.

5. OSCILLATION

- Vertical oscillation with hand: 0° 0° 10° 20° 30° 40° 50° 60° 70° 80° 90°.
- Horizontal oscillation can be any angle by hand.
- Press "DIRING" to start the oscillation function, then press "ANGLE" to adjust horizontal oscillation angle: 30° 60° 90° 120° 150° 180° 300°.
- Longpress "LEFT" or "RIGHT" on a remote control, the fan can oscillation accordingly.

6. TIMER

Press the TIMER button, you can set the running time for this fan. Time

5. Always unplug the fan before cleaning

- Practical concept:
- Unplugged and packed to prevent dust from entering the body if not used for a long time.
 - Placed in a dry well-ventilated place after packed.

MANTENANCE GUIDANCE

When the fan does not rotate, and abnormal sound, immediately turn off the power, sent notice to the company service center for repair.

6. SPECIFICATION

Model	FS 7908E
Rated voltage	220-240V
Rated frequency	50/60Hz
Rated power	450W
Rated current	1.95A
Power factor	>0.95
Box	800mm x 400mm x 400mm (300mm)
Height	770 x 400mm
Weight	7.78 x 4.65kg
Material	ABS
environmental	0-40°C (without humidity RH25%)
temperature	5

setting as "1h", "2h", "4h", "8h". When setting the indicator and the figure shows on the display.

7. FUNCTION CONSERVATION

When in standby mode, wind speed, mode and oscillation will all be conserved. (Things from will not be conserved under sleeping mode).

Charge for remote control
One button battery (CR2032 3V) has been used in our remote control. Please insert the battery to remote control tightly based on the direction of the polarity. It does not use for a long time, please put the battery out from the remote control.

8. CLEAN & MAINTAIN

If there is a lot of noise due to dirt on the back grid cover of the fan, it will affect the performance of the fan, or no regular clean the fan once per month at least.

- Always unplug the fan before cleaning.
- Wipe up parts with a soft cloth. The motor and electrical components must not come into contact with water.
- Use soft cloth cleaning.
- Do not allow water and steam to drip on.
- Do not use cleaning agent or solvent cleaning.

© 2023 Toyon®. All rights reserved.