

SERVICE & IMPORTANT NOTICE

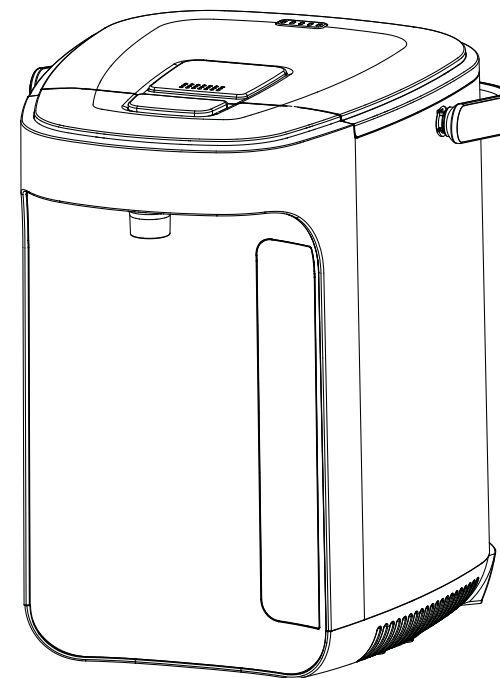
- If the supply cord is damaged, it must be replaced by a special cord or assembly available from the manufacturer or its service agent.
- **WARNING:** This appliance is not intended for use by persons (including children) with reduced physical, sensory or mental capabilities, or lack of experience and knowledge, unless they have been given supervision or instruction concerning use of the appliance by a person responsible for their safety.

Toyomi®

MICRO-COM S.S. ELECTRIC AIRPOT

INSTRUCTION MANUAL

Please read carefully and keep the instruction well.

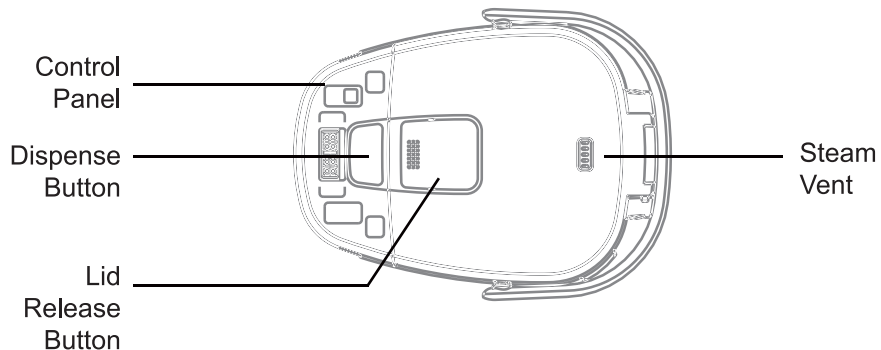
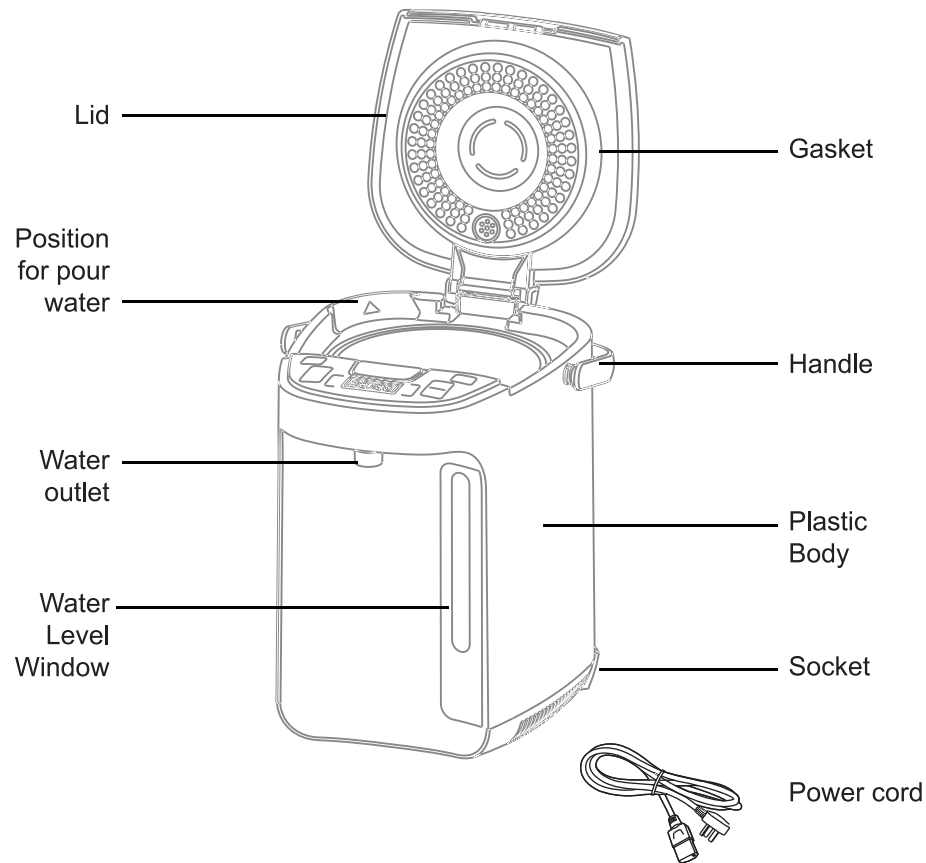


MODEL: 5588
220-240V~50/60Hz
POWER: 1600W
CAPACITY: 5.0L

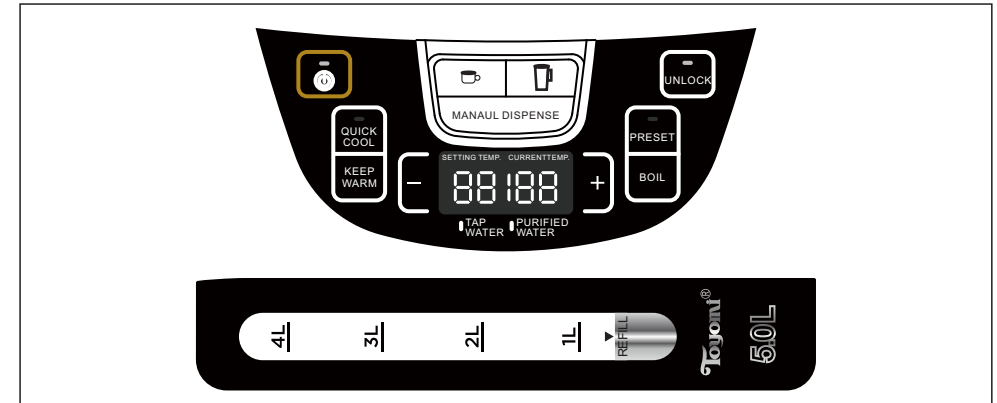
IMPORTED BY NATIONAL ELECTRICAL TRADERS

This appliance is for household use only.

PART NAME

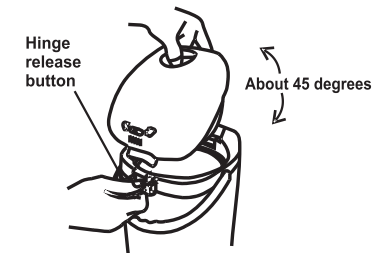


CONTROL PLANE



Removing and attaching the lid

1. Pull up on the lid lock and open the lid to angle of about 45 degrees.
2. While pressing and holding the hinge release button, detach the lid by pulling it forward and up at an angle.
To attach the upper lid, push it back into place at an angle.



When using the hot water dispenser for the first time or if this appliance has not been used for a long period, boil water and dispense the water few times. This water should be discarded. When you first use the hot water dispenser, a slight smell of plastic may be noticed and will fade out gradually.

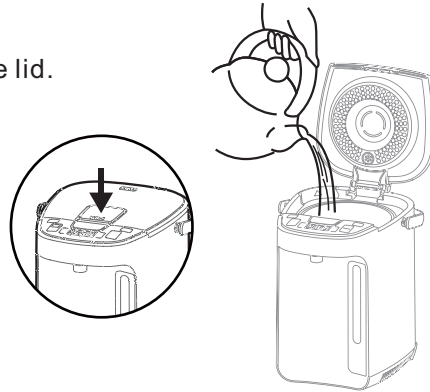
HOW TO USE

Before the first use, fill the dispenser with clean water to maximum capacity and boil. Then discard the water.

Aslight smell of plastic may be noticed when the dispenser is used for the first time. This is normal and the odor will gradually fade away with use.

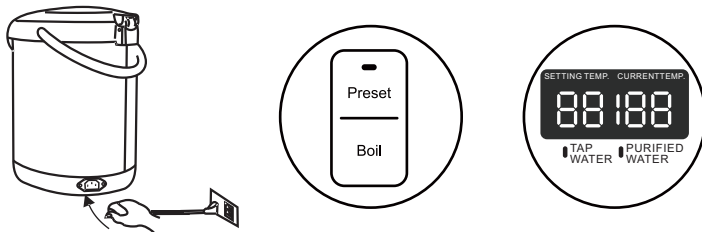
How to fill water

1. Press the release button to open the lid.
2. Fill water with water container.
3. Do not fill water directly from pipe water faucet.
3. Do no over fill.
4. Close the lid tightly.



Boil water

1. Connect power and press “Boil” to start boiling water.
2. After finished boiling, the thermopot will keep warm automatically.



*There 2 option for boiling water: “Pipe water” and “Purify water”.

*Default setting is for boiling “Pipe water”.

*For select “Purify water”, press the “Boil” again.

*Boil “Pipe water” will little bit longer then “Purify water” to purifying chlorine.

USING THE THERMO POT

Dispense water

1. Place the cup under the spout and touch the “unlock” button before pressing dispense button.
2. Auto dispense: There are 2 option for 150ml and 250ml, after touching one of these button, water will automatically dispense and stop. (no need to hold the button)
3. Manual dispense: Touch this button to dispense water and release it to stop.

SAFETY PRECAUTIONS

CAUTION

1. DO NOT place near open flames.
2. DO NOT use the appliance without sufficient space around it, as exiting steam may damage the wall etc.
3. DO NOT leave the water for long durations inside the Inner Pot.

CARE & CLEANING

1. Detach the power plug from the power supply before cleaning.
2. Discard any remaining hot water and allow the appliance to cool down completely before cleaning.
3. Wipe with clean damp cloth. Do not immerse the thermo pot into water or any other liquids.
4. Do not clean with abrasive detergent, gasoline or turpentine to avoid damaging the outer body's finishing.
5. Wipe the inner pot using a clean damp cloth or soft sponge.
6. Do not use any brush with hard bristles or with abrasive detergent.
7. Remove dirt/grime on the outer body using a soft, damp cloth.
8. After using for prolonged durations, water impurities will accumulate inside the inner pot and clog the water outlet.
9. To clean water impurities inside the inner pot, fill citric acid (70gm) with water into the inner pot and boil for 30 minutes once every month if the water used is not purified.
10. Discard water after boiling and gently wipe all water remnants with soft wet sponge once the appliance has cooled down.
11. Boil water again and discard completely to clean the inner pot. Repeat if necessary.
12. Prior to storage, ensure that the unit is completely dry. Store it into a plastic bag and seal it to prevent insects from getting in.

TROUBLESHOOTING

PROBLEM	CAUSE	SOLUTION
No power	Loose power connection	Check connection at the unit and socket
Can not switch to boil /reboil	Water level is too low	Fill water
Water cannot be poured out smoothly by pushing dispense key or touch-cup button	Unit just finished boiling and air bubbles are trapped inside	Open lid to release air. Close lid
	Interior is dirty and filter blocked	Clean
Water flowing out from unit	Water added above FULL line	Do not add water above FULL line
White residues in water	Mineral deposits (not a defect of the unit)	Clean inner pot with Citric Acid
Boiling sound is excessively loud	Interior is dirty and filter blocked	Clean inner pot with Citric Acid

ELECTRIC PUMP AIRPOT USAGE TIP

1. When unpacking, there may have some peculiar smell in inner pot due to the close packing. Please fill water to full mark and put two slices of lemon into it, boil twice or three times to lighten the smell.
2. When unpacking, there maybe have some water in inner pot and/or in water level gauge, it is frost of steam, is normal.
3. if being used for a long time, the inner pot may be scaled, or the deposited impurity of water may cause some yellow spots on the bottom. If the above method dose not work, you could use citric acid or special scale-cleanser for the electric pump air pot instead of lemon.
4. Please keep filling water in time to avoid empty-boiling, or the inner pot will become yellow and nondurable.

电热水瓶使用小贴使

- 1、产品的封闭包装会令开箱时内胆有少许异味，将内胆满水加入两片柠檬煮沸二至三次，即可减退异味。
- 2、开箱时，内胆和/或水尺里可能会有蒸气凝结成的水珠，这是出厂包装前清洗电热水瓶余留的蒸气，请放心使用。
- 3、长时间使用后内胆可能会出现的水垢，或由于水含杂质沉淀于内胆底部出现黄斑，也可用上述方法处理，而严重的可用柠檬酸或电热水瓶专用除垢剂煮水除去。
- 4、请注意及时加水避免干烧，经常干烧会令内胆变黄及影响产品耐用性。