



CIRO ALUMINUM CLAMP MOUNT

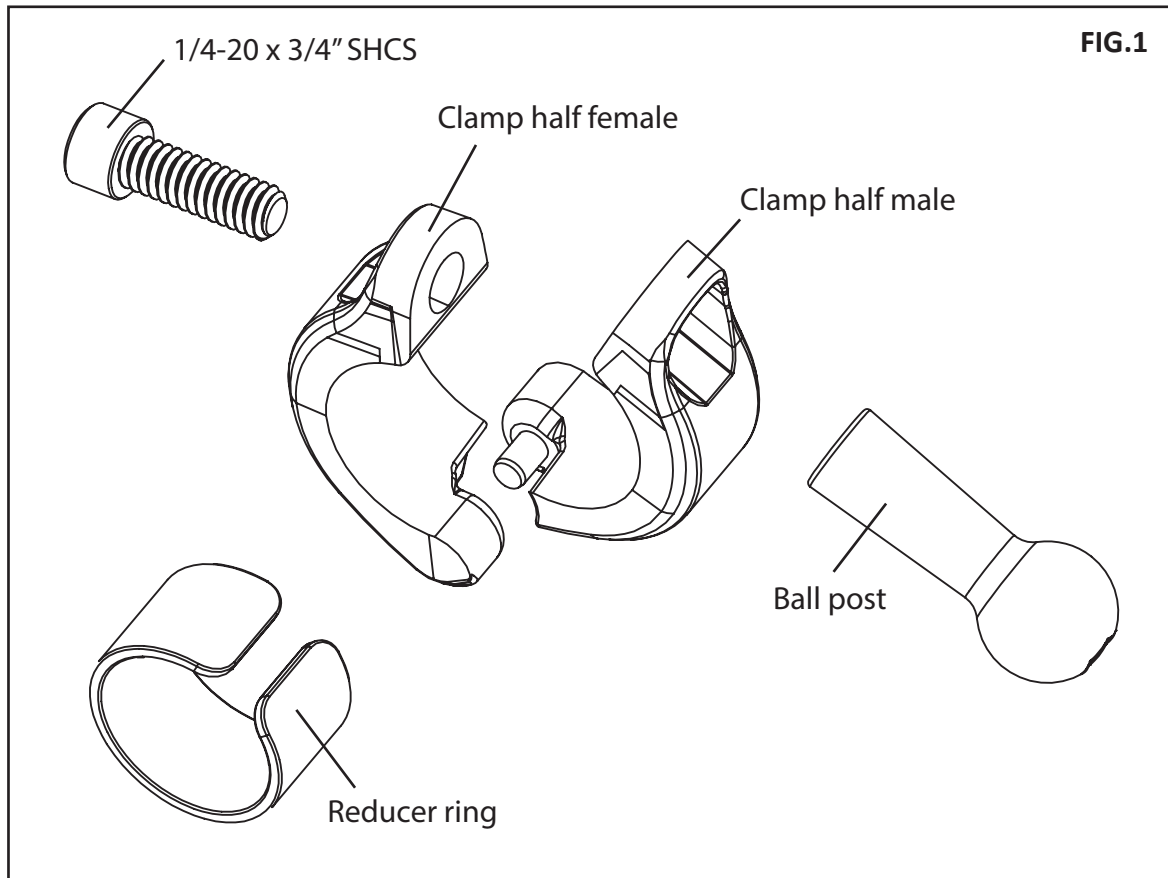
PARTS INCLUDED

1	Clamp half male
1	Clamp half female
1	Ball post
1	1/4-20 x 3/4" SHCS
*1	Reducer ring (*7/8"-1" kits only)

INSTALLATION INSTRUCTIONS:

1. Park on a level surface and shut off the motorcycle. Ensure that the engine has time to cool before installation.
2. Determine the ideal location for the device you are mounting with the Ciro Clamp Mount.
NOTE: Tightening this clamp onto a bar will mark the surface finish.
- *3. Optional step. If you are using the clamp on a 7/8" bar open up the reducer ring and form it around the bar before installing the clamp.
4. Assemble the clamp halves around the bar and insert the 1/4-20 screw through both halves. Thread the ball post onto the screw. Align the flat spot toward the hinge of the clamp.
5. Tighten the assembly "finger tight" and fine tune the position.
6. Finally tighten the assembly onto the bar using a 3/16" hex key in the screw and another 3/16" hex key in the ball stud. Torque to 10 ft-lbs.

NOTE: If you have purchased a Ciro accessory to go with your Clamp Mount, please refer to those instructions to complete your installation.



WARNING:

This indication alerts you to the fact that ignoring the contents described herein can result in potential serious injury or death if not followed.

CAUTION:

This indication alerts you to the fact that ignoring the contents described herein can or will result in material damage and/or personal injury.

ATTENTION:

This indication alerts you to the fact if you ignore this detail you will affect the performance or functionality of the product.

All Ciro products are designed for "easy assembly" and/or "plug and play". We recommend a competent mechanic install our products, using standard mechanical procedures to assure a safe and successful installation.

NOTE:

Ciro® warrants that products sold hereunder to the original purchaser, if maintained and operated under normal conditions, shall be free from any defects in materials and workmanship for a period of (3) years from date of purchase, and a lifetime warranty against LED failure.

Ciro will have no obligation if the customer cannot show proof of purchase.

Warranty will not be granted unless the part is properly installed and maintained.

Ciro will not be liable for any consequential and incidental damages, including labor, or non-Ciro products.

Please visit our website Ciro3d.com for our complete warranty policy.



CIRO DRINK HOLDER

Parts Included:

- 1 Drink Holder Assembly

Installation Instructions:

1. Remove the large plastic nut from your drink holder and slide it over the **Ciro ball mount** with the threads facing outward.



2. Snap your drink holder onto the ball and thread the large plastic nut back onto the drink holder. Adjust the angle, tighten it down, and you are ready to go.



WARNING:

This indication alerts you to the fact that ignoring the contents described herein can result in potential serious injury or death if not followed.

CAUTION:

This indication alerts you to the fact that ignoring the contents described herein can or will result in material damage and/or personal injury.

ATTENTION:

This indication alerts you to the fact if you ignore this detail you will affect the performance or functionality of the product.

All **Ciro** products are designed for "easy assembly" and/or "plug and play". We recommend a competent mechanic install our products, using standard mechanical procedures to assure a safe and successful installation.

NOTE:

Ciro products are designed and manufactured under very strict quality control. **Ciro** warrants that products sold to the original purchaser shall be free from any defects in materials and workmanship for a period of 3 (three) years from the date of purchase, and a lifetime warranty against LED failure.

Ciro will have no obligation if the customer cannot show proof of purchase.

Warranty will not be granted unless the part is properly installed and maintained.

Ciro will not be liable for any consequential and incidental damages, including labor, or non-**Ciro** products.

Please visit our website Ciro3d.com for our complete warranty policy.

CIRO3D.COM