



CROWN TAIL LIGHT WITH LIGHTSTRIKE™ TECHNOLOGY

PARTS INCLUDED

- 1 Tail light
- 1 Installation Kit

INSTALLATION INSTRUCTIONS:

- 1) Park on a level surface and shut off the motorcycle. Ensure that the engine has time to cool before installation.
- 2) Secure motorcycle in an upright vertical position. Use a motorcycle lift if one is available. You will be working up under the fender so having the rear of the motorcycle raised is helpful.
- 3) Remove the seat and locate the OEM 6-pin wiring harness and install the wiring adapter. Connect the Crown Tail Light to the wiring adapter to understand how it functions. Disconnect the Crown Tail Light and begin its installation (FIG.1)
- 4) Remove the left side saddlebag.
- 5) Remove the plastic dust cover inside the bottom of the rear fender and unplug the light bar assembly from the right side. (FIG.2)
- 6) Use a 7/16" socket and short handle ratchet wrench to remove the nut that holds the wire retainer. Retain screw and retainer for re-use. (FIG.2)
- 7) Use a 1/2" socket and short handle ratchet wrench to remove the two bolts that attach the light bar onto the fender. Retain screws for re-use.
- 8) Pull the rubber grommet out from the fender and remove the assembly from the motorcycle.
- 9) Use a T-27 Torx to remove the reflector. (FIG.3)
- 10) Test fit the Crown Tail Light onto the light bar. Run the wire from the Crown Tail Light through the rubber grommet. (FIG.4)

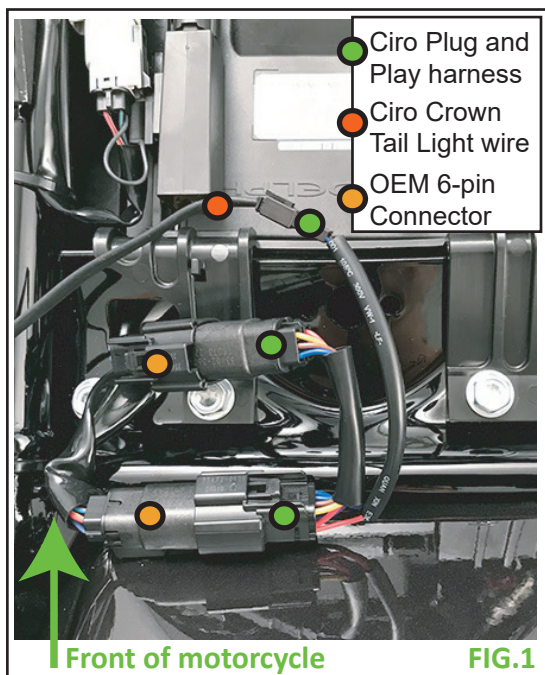


FIG.1

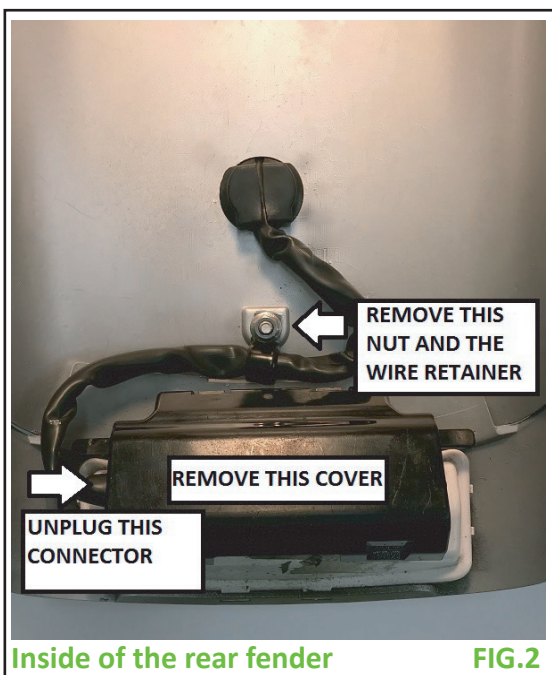


FIG.2

WARNING:

This indication alerts you to the fact that ignoring the contents described herein can result in potential serious injury or death if not followed.

CAUTION:

This indication alerts you to the fact that ignoring the contents described herein can or will result in material damage and/or personal injury.

ATTENTION:

This indication alerts you to the fact if you ignore this detail you will affect the performance or functionality of the product.

All Ciro products are designed for "easy assembly" and/or "plug and play". We recommend a competent mechanic install our products, using standard mechanical procedures to assure a safe and successful installation.

NOTE:

Ciro® warrants that products sold hereunder to the original purchaser, if maintained and operated under normal conditions, shall be free from any defects in materials and workmanship for a period of (3) years from date of purchase, and a lifetime warranty against LED failure.

Ciro will have no obligation if the customer cannot show proof of purchase.

Warranty will not be granted unless the part is properly installed and maintained.

Ciro will not be liable for any consequential and incidental damages, including labor, or non-Ciro products.

Please visit our website Ciro3d.com for our complete warranty policy.



- 11) Push the wires and grommet back into the fender. Install light bar onto the fender and tighten.
- 12) Reinstall the wire retainer, plug in the light bar, reinstall the plastic dust cover. (FIG.2)
- 13) Run the Crown Tail Light wire out of the fender interior on the left side.
- 14) Adjust the position of the Crown Tail Light leaving a small gap between it and the fender. Mark the location with masking tape. (FIG.5)



FIG.3



FIG.4



FIG.5

- 15) ATTENTION: Thoroughly clean the mounting surface with denatured alcohol to remove all wax, oil, and residue. NOTE, New motorcycles are delivered from the factory covered in protective oil. Remove it before installing this product. NOTE, Do not install if the temperature is below 50° F. The adhesive will not cure properly. (FIG.3)
- 16) Remove the red backer from the adhesive and install the Crown Tail Light. Press the light firmly onto the surface for 60 seconds. The adhesive cures in 24hrs. (FIG.5)
- 17) Run the Crown Tail Light wire under the saddlebag filler panel, up along the fender strut and under the seat. Connect it to the Crown Plug and Play harness. Secure the wire with the included cable ties.
- 18) Double check wire clearance under the fender and secure the wire with the included cable ties.
- 19) The Crown Tail Light will now function as a run and brake light. To use Lightstrike follow the instructions below.

LIGHTSTRIKE TECHNOLOGY™

Lightstrike Technology uses your smartphone and Bluetooth to control this product.

- 1) Download the Lightstrike app where you get your iOS or Android phone apps.
- 2) The default password is 000000 (six zeros).
- 3) For additional information and video scan the QR code.

