

 **dedolight**®

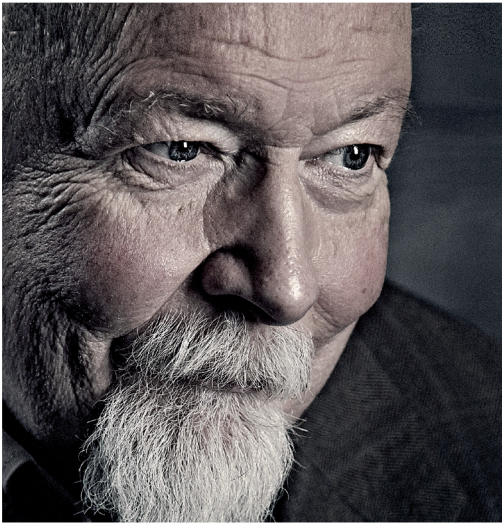
PRECISION LIGHTING INSTRUMENTS

FORENSIC SERIES



English 09/18

INTRODUCTION



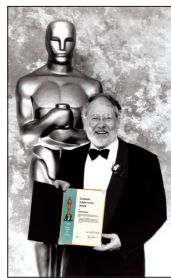
When the first dedolights went to market in 1984 they quickly became the workhorse for film and documentary cameraman. Over the years broadcasters specified sets for their travelling teams as the reference tool due to its immanent quality and features.

For many years our founder Dedo Weigert worked as a Director of Photography and producer on film projects all over the world. Not content with the ordinary tools of his trade, he constantly sought technical innovations in lighting, leading to over 30 international patents.

The design of studio lighting has long been dominated by Fresnel lights, a technology based on principles dating back to the beginning of the twentieth century. Inspired by his experience in film, Dedo Weigert built on this traditional concept with a revolutionary new optical system, increasing light output, efficiency and improving control. While traditional studio lights achieve a focusing range of 1:3 (maximum 1:6), dedolight optical systems offer 1:25 (up to 1:53).

dedolight's award-winning systems offer a perfectly clean beam, without stray light, allowing for maximum creative precision and light and shadow control. In film, broadcast and photography, dedolights have become part of the standard arsenal of the world's most discerning professionals.

From the smallest productions to Hollywood blockbusters, dedolights are the first (and often the only) choice of lighting when demanding the highest possible precision and control, for example in special effects (as seen in Harry Potter, Lord of the Rings, Armageddon, and many more films). dedolight has a long history of award-winning lighting systems, winning two Oscars in 1990 and 2003, an Emmy in 2003 and Cinec awards in 2002 and 2010.



Academy of Motion Picture Arts & Sciences
Technical Achievement & Engineering Awards



Academy of Television
Arts & Sciences – Emmy



Cinec Award
2002/2010/2014

Scientists, investigators and crimeforces have used modified dedolight systems for over twenty years. Recognising the unique demands of forensic lighting, the dedolight research and development team designed the latest series of dedolight precision lighting systems especially for these applications.

Today the product portfolio of forensic dedolights covers a broad range of intensities and spectras. Whether you compile your own system out of the components or choose one of the sets, compiled with help of Dr. Martin Schulz from the Forensic department of the Ludwig-Maximilians-University in Munich.

All dedolight focusing LED Systems have unique features, which include:

- Extrem focusing range from typ. 60° flood to 5° superspot
- The glass lenses define a totally even lightbeam with a distinct hard single-shadow
- Double aspheric optics optimize the light efficacy
- All LED Systems are dimmable down to 5%
- Easy battery operation available

All of the dedolight LED Systems are offered in 3 variants for the visible spectrum:

- Film/Broadcast daylight 5600° CRI Ra 96 TLCI 96
- Film/Broadcast tungsten 3200K CRI Ra 98 TLCI 97
- Colortunable extended Bi-Color 2700-6500K, CRI Ra 96/98, TLCI 96/97

Our standard Forensic LED arrays consist of:

- 960nm IR ■ 400nm UV
- 860nm IR ■ 365nm UV
- tunable IR 960-860 IR ■ tunable UV 400-365

For art history application we added for custom fixtures:

- 625nm red ■ 450nm/520nm tunable royal blue/green
- 520nm green ■ 450nm/470nm tunable royal blue/ deep blue
- 450nm royal blue

FORENSIC KITS

KMULTI4 Multi-Spectrum 4-Light LED Kit

Together with the Forensic Institute at LMU Munich University the team of Dedo Weigert Film GmbH optimized their special range of equipment to the needs of crime scene investigation. These dedolight Forensic Kits enable the specialist a more precise and faster forensic inspection of crime scenes.



This all in one sturdy case includes:

- focusing BiColor 6500-2700K visible spectra light with flip-down polarizing filter, to reduce glare in combination with a crossed polarizing filter on your camera
- focusing Bi-Infrared 860nm/960nm
- focusing Bi-Ultraviolet 365nm/400nm
- focusing royal blue/green 450/520nm
- AC Powersupply
- DC Batteries
- clear UV-protection eyeglass
- yellow, orange and red UV-protection eyeglasses to simulate the applicable camera filters to enhance marked bloodstains
- several mounting options: Hot-Shoe Cameramount, 1/4" cameramount, Handle, Table Stand, Tripod



- 1 **DLOBML-BI-IR** Ledzilla focusable onboard IR-A LED light, adjustable between 860nm and 960nm wavelength. 6-18V DC input.
- 1 **DLOBML-BI-UV** Ledzilla focusable onboard UV LED light, adjustable between 365nm and 400nm wavelength. 6-18V DC input.
- 1 **DLOBML-BI-POL** Ledzilla bicolor, focusable onboard LED light with flip-down POL filter. 6-18V DC input.
- 1 **DLOBML-BI-BG** Ledzilla focusable onboard blue/green LED light, adjustable between 450nm and 520nm wavelength. 6-18V DC input.
- 4 **DLOBML-BS** 7.2 V Sony battery shoe for NPF
- 1 **DGL-Y** Colored polycarbonate eyeglasses, yellow (415-450nm)
- 1 **DGL-O** Colored polycarbonate eyeglasses, orange (320-550nm)
- 1 **DGL-R** Colored polycarbonate eyeglasses, red (450-570nm)
- 1 **DGL-UV** UV protection eyeglasses
- 2 **DLBSA-TS** Table stand: 9.5 x 6.3 x 1.2 cm (3.7 x 2.5 x 0.5") with shoe for light head
- 1 **DLBSA-HAND** Shoe adapter with handle
- 2 **DLCH-NPF** Charger for NPF battery, input 100 - 240 V AC, please specify power connector (A / E / G / J / U)
- 4 **DLB-NPF550** 7.4 V Li-Ion battery 14.8 Wh (2000 mAh)
- 1 **DSTFX40** Flexible stand extension, 40cm long
- 2 **DSTM** dedolight stand, micro
- 2 **DLBSA-JSF** 16mm receptacle (female) to hot-shoe mount adapter (female).
- 1 **CLAMP1** dedolight clamp
- 1 **DCHDMU4** Heavy duty transport case for 4-Light Multi-Spectrum kit

Size: 56 x 43 x 22 cm (21.7 x 16.9 x 8.5")

Weight 8,6 kg (19lb)

IR / UV - LED ON-BOARD LIGHT

- Even light distribution over the focusing range due to the dedolight double aspheric optic
- Dimmable down to 4%.
- iREDzilla:
 - First light head in the near infrared with a focusing range of 4-56°
 - For specialized Nightvision cameras - or modified DSLRs
 - Illumination up to 40 m (130 ft) (tested with Sony Nightshot Camcorder)
 - Usable with most night vision tools
 - Infrared 860nm - invisible to most humans - a dark red cherry can be seen if looked directly into the front lens
 - also available in 960nm (totally invisible to humans)
- Fluoreszilla: 365 nm or 400 nm ultraviolet fixture, which focuses like broadcast dedolight from 4° to 56°.
- Powers from any 6V to 18V DC power source.
- Power consumption is only 6W
- Operates from -40°C up to +40°C.
- Battery shoe (option) compatible with Panasonic, Canon, Nikon Mini DV batteries
- NPF550 7.2V, 2000 mA, 105 minute run time.
- NPF750 7.2V, 4000 mA, 210 minute run time.
- NPF950 7.2V, 6000 mA, 330 minute run time.
- Optional power cables are available for Anton/Bauer and PAG systems, car cigarette lighter outputs or battery belts/packs.
- At 50% dimmed light output the power consumption comes down to 50% - doubling the battery run time
- Applications:
 - infrared illumination for cameras (with night-shot function)
 - Infrared photography
 - Surveillance systems
 - Image processing systems
 - Wildlife observation
 - Criminology
 - Forensic science
 - Art history



DLOBML-BI

Color temperature can be adjusted in a very wide range, from 2700K all the way to 6500K. This light may be adjusted to all ambient light situations.

DLOBML-BI450/520

Tunable royal blue - green Ledzilla.

DLOBML-BI Ledzilla Bicolor as measured in daylight position 5600K

Distance	Meter	1	2	3	4	5	10
	Feet	3'	6'	9'	12'	15'	30'
Flood	Lux	330	83	37			
	Foot Candle	31	7.7	3.4			
Medium	Lux	726	182	81	45		
	Foot Candle	67	17	7.5	4.2		
Spot	Lux	2,650	663	294	166	106	
	Foot Candle	246	62	27	15	9.9	

Bicolor in tungsten function ~ 15% lower output

UV - LED ON-BOARD LIGHT

REDZILLA



DLOBML-IR860

860 nm Infrared Ledzilla

Works with cameras having a night-shot function such as Somikon DV-883IR, Sony HDR-XR550/HDR-CX730E/DCR-TRV3.55E/PMW-100 and Canon XA10/XA20/XA25.

DLOBML-IR960

960 nm Infrared Ledzilla

DLOBML-BI-IR

860nm/960nm tunable IR Ledzilla.

FLUORES-ZILLA

DLOBML-UV400

400 nm ultraviolet Ledzilla

DLOBML-UV365

365 nm ultraviolet Ledzilla

DLOBML-BI-UV

400nm/365nm tunable ultraviolet Ledzilla



	Spot 1m 5°	Flood 1m 55°
DLOBML-UV400	1,0 mW	0,1 mW
	130 mW/cm ²	10 mW/cm ²
DLOBML-UV365	2,2 mW	0,12 mW
	280 mW/cm ²	17 mW/cm ²

MOUNTING & ACCESSORIES

(FOR LEDZILLA[®], IREDZILLA, FLUORESZILLA)

Camera Adapter

DLA-LB

Large bone
2 x female camera shoes
and 3 x 1/4" threads.
Mounts to camera with
1/4" screw



DLGA300

Articulating arm 300 mm,
square top with 1/4" thread,
camera shoe or 1/4" screw
to camera



DLGA200

Articulating arm 200 mm,
square top with 1/4"
thread, camera shoe or
1/4" screw to camera



DLBSA-MBJ

Metal ball joint,
square top with
1/4" thread and
camera shoe



DLBSA-U

Square top with
1/4" thread,
ends in camera shoe



DLBSA-M

1/4" screw to mini shoe
for Sony mini camcorder,
use with DLBSAT



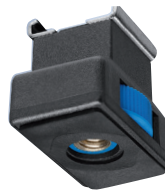
DLBSA-S

Female camera
shoe adapter to
1/4" screw



DLBSA-T

Female camera shoe
adapter to 1/4" thread



DLBSA-3S

Triple female
camera shoe
with tilt lock



Stand Adapter

DLA-ML

Stand adapter,
square top with 1/4"
thread accepts 16 mm baby stud



DLBSA-JSF

Stand adapter,
camera shoe accepts
16 mm baby stud (5/8")



Stand Alone

DLBSA-TS

Table support
9.5 x 6.3 x 1.2 cm
(3.7" x 2.5" x 0.5"),
accepts camera shoe



DLBSA-HAND

Handle with female
camera shoe



DLBRS

Rail with 1/4" screw
for camera and
female camera
shoe for light head



DLBRHS

Rail with folding handle
1/4" screw for camera
and female camera shoe
for light head



DV3GA

Vacuum mount
Ø 7,5 cm / 3"
with 200 mm
articulating arm



Transport Pouch

DLOBML-P

Soft pouch for
Ledzilla LED
light head



POWER SUPPLY

(FOR LEDZILLA[®], IREDZILLA, FLUORESZILLA)

Battery Holder Plates

DLOBML-BS

for 7.2 V Sony for NP-F / Panasonic VW-VBD1

DLOBML-BSV

for 7.2 V Sony NP-FV

DLOBML-BSU

for 12 V Sony for BP-U

DLOBML-BP

for 7.2 V Panasonic for CGA

DLOBML-BP2

for 7.2 V Panasonic for VW-VBG6

DLOBML-BP3

for 7.2 V Panasonic for VW-VBG 070 / 130 / 260, CGA-DU07 / 14 / 21

DLOBML-BP4

for 7.2 V Panasonic VW-VDB 58

DLOBML-BC

for 7.2 V Canon for BP-9

DLOBML-BC2

for 7.2 V Canon for BP 808 / 809 / 819

Photo Battery Shoe:

DLOBML-PBC1

for 7.2 V Canon for LP-E6

DLOBML-PBN1

for 7.2 V Nikon for EN-EL3E

DLOBML-PBN2

for 7.2 V Nikon for EN-EL15

DLOBML-PBP1

for 7.2 V Panasonic for DMW-BLF19E

Batteries

DLB-NPF550

7.4 V Li-Ion battery
14.8 Wh (2000 mAh)



DLB-NPF950

7.4 V Li-Ion battery
43.2 Wh (6000 mAh)



Batteries

DLCH-NPF

NPF-Battery
Charger
Input: 100-240V



DLBF-8AA

External battery box
for 8 AA batteries
1.5V



Power Cable

DLPS-12

100-240V
with 12V DC
output



Belt Adapter

DLBCA-NPF

NPF Adapter
Belt holder
with Velcro
loop to carry
NPF battery
on a belt



DLBCA-V

V-Mount belt adapter
without ballast holder,
separate extension cable
to light head needed



DLBCA-AB

Anton/Bauer-Mount belt
adapter without ballast
holder, separate extension
cable to light head needed



Battery Cables

DDCC-DTAPS

Cable 28 cm / 11" with
D-Tap connector



DDCC-DTAPL

Cable 55 cm / 22" with
D-Tap connector



DDCC-SWIT

Swit Cable 55 cm / 22"
with Ø 2,1 / 5,5 mm connector
for Swit battery



DDCC-PAG

PAG Cable 55 cm / 22"
with Ø 2,1 / 5,5 mm connector
for PAG battery



DDCC-XLR

65 cm - 1,30 m /
25 - 51"
with 4-Pin XLR connector



DDCC-CAR

Cable 1,8 m (6 ft.)
with cigarette light
connector



DLED2 SPECIAL – INFRARED

- 20 W IR LED comes in two DLED2 yoke versions.
- **DLED2Y-IR860** works at 860 nm and may be used on cameras with night-shot function
- **DLED2Y-IR960** works at 960 nm which is suitable for military cameras. The LED chip itself shows no visible light
- Compatible with DLED2 light shaping accessories
- Separate **DT2-BAT-IR** and DLED2POW extension cables in three sizes available 55 cm (1.8'), 140 cm (4.6'), 300 cm (9.8')
- LED power indicator
- Mains power: DPLS12-30 universal AC power supply, 30 W
- Optional battery belt holder for Sony NPF 7.2 V Li-Ion batteries (DLBCA2-NPF)



DLED2Y-IR960

DLED2Y-IR860



DT2-BAT-IR

DLED4 SPECIAL – INFRARED AND UV



DLED4-IR860

INFRARED:

- 40 W IR LED comes in DLED4 housing
- DLED4-IR860 infrared LED for cameras with NIGHT SHOT / NIGHT VISION mode.

DLED4-RL625

DLED4 625nm red

DLED4-GL520

DLED4 520nm green

DLED4-BL450

DLED4 450nm royal blue



DLED4-UV400

ULTRA-VIOLET („black light“):

40 W UV LED comes in two DLED4 versions:

- DLED4-UV365 works at 365 nm wavelength.
- DLED4-UV400 works at 400 nm wavelength.

INFRARED / ULTRA-VIOLET:

- AC and battery powered operation for all DLED4 IR / UV lights:
AC: DT4
DC: DT4-BAT and DDCC cable
- Compatible to DLED4/CLASSIC SERIES light shaping accessories

	Spot 1m	Flood 1m
DLED4-UV400	5°	60°
	9,2 mW	0,6 mW
	1.175 mW/cm2	73 mW/cm2
DLED4-UV365	5°	60°
	8,5 mW	0,5 mW
	1.080 mW/cm2	60 mW/cm2

DLED7 SPECIAL – UV

DLED7-UV365

- 90 W DLED7-UV365 works with 365 nm wavelength.
- AC and DC powersupply for DLED 7 UV lightheads:
AC: DT7, DC: DT7-BAT-AB/-XLR
- compatible with all lightforming accessory from the dedolight classics / DLED4.

400nm



365nm



	Spot 1m	Flood 1m
DLED7-UV365	5°	60°
	13,8 mW	1,0 mW
	1.750 mW/cm2	123 mW/cm2

DLED9 SPECIAL – UV 400



DLED9-UV400

ULTRA-VIOLET („black light“):

- 80 W DLED9-UV365 works at 365 nm wavelength.
- DLED9-UV400 works at 400 nm wavelength.
- AC and battery powered operation for all DLED9 UV lights:
AC: DT9 (see page 24)
DC: DT9-BAT-AB (see page 25)
- Compatible to DLED9/Series 400 light shaping accessories



	Spot 1m	Flood 1m
DLED9-UV400	5°	60°
	24,6 mW	2,2 mW
	3.100 mW/cm2	275 mW/cm2
DLED9-UV365	5°	60°
	28,3 mW	2,0 mW
	3.600 mW/cm2	255 mW/cm2



Dedo Weigert Film GmbH

Karl-Weinmair-Straße 10
D-80807 Munich, Germany

Phone: +49-(0)89 - 356 16 01
Fax: +49-(0)89 - 356 60 86

info@dedoweigertfilm.de
www.dedoweigertfilm.de