



# WISE RIVER

1-3 Bedrooms | 1-3 Baths | 1-2 Powders | 3 Car Garage

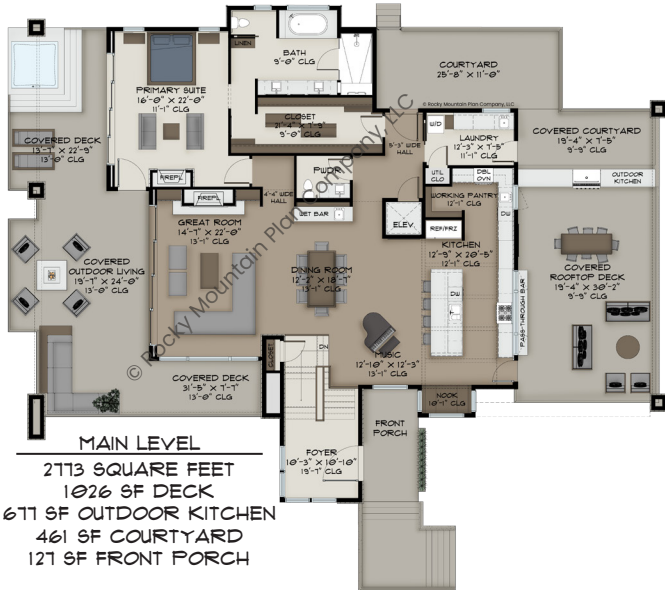
**MAIN LEVEL:** 2773 SQ FT  
**LOWER LEVEL:** 2292 SQ FT  
**TOTAL FINISHED:** 5065 SQ FT

**FOOTPRINT:** 91' WIDE  
 70' DEEP

SCAN HERE:



PLANS, IMAGES, AND COPIES THEREOF ARE PROTECTED UNDER THE COPYRIGHT LAWS OF THE UNITED STATES AND SHALL REMAIN AT ALL TIMES THE PROPERTY OF ROCKY MOUNTAIN PLAN CO., LLC, ITS SUCCESSORS AND ASSIGNS



- FEATURES:**
- TRULY STUNNING OUTDOOR LIVING SURROUNDS THIS MOUNTAIN MODERN HOME
  - GREAT FOR ENTERTAINING, WITH LARGE OUTDOOR KITCHEN EASILY ACCESSED VIA THE PASS-THROUGH BAR, PLUS COURTYARD SPACE AND COVERED OUTDOOR LIVING WITH SPA DECK
  - PRIMARY SUITE FEATURES FIREPLACE, AMPLE CLOSET, AND SPA-LIKE BATH
  - GOURMET KITCHEN INCLUDES PLENTY OF COUNTER SPACE AND WORKING PANTRY
  - AN ELEVATOR KEEPS THIS PLAN ACCESSIBLE, AND THE LOWER LEVEL INCLUDES TWO ADDITIONAL BEDROOMS AND A REC ROOM FEATURING A BAR AND GAME ROOM



VISIT [WWW.ROCKYMOUNTAINPLAN.COM](http://WWW.ROCKYMOUNTAINPLAN.COM) TO ORDER THIS PLAN