



TENNESSEE PASS

2-4+ Bedrooms | 3+ Baths | 3 Car Garage

TOTAL FINISHED:
MAIN LEVEL:
OPT. LOWER LEVEL:

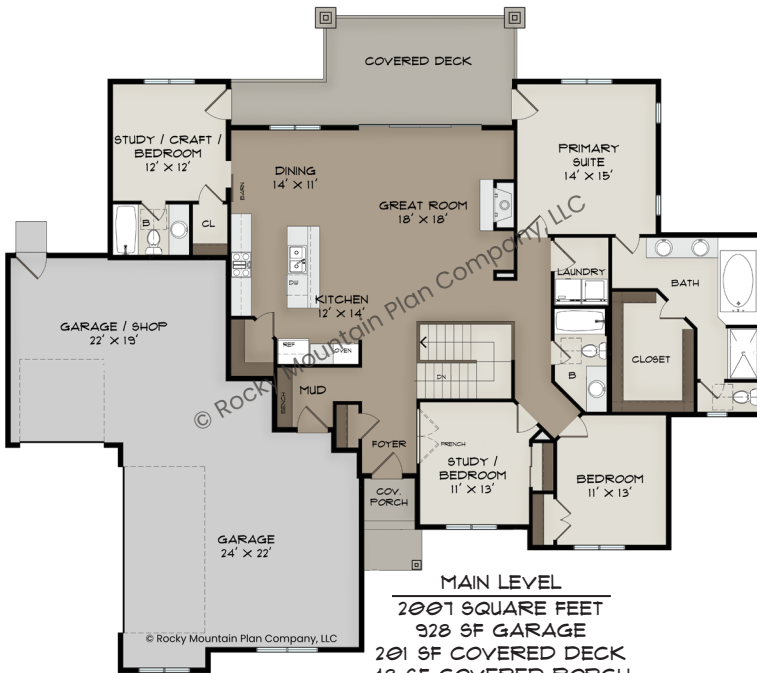
2007+ SQ FT
2007 SQ FT
1500 SQ FT

FOOTPRINT:
74' WIDE
65' DEEP

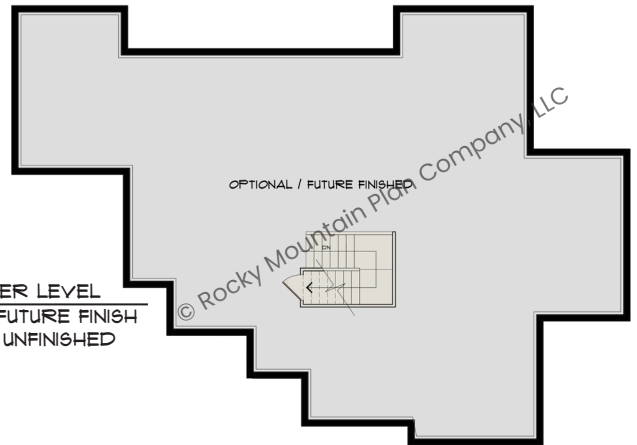
SCAN HERE:



PLANS, IMAGES, AND COPIES THEREOF ARE PROTECTED UNDER THE COPYRIGHT LAWS OF THE UNITED STATES AND SHALL REMAIN AT ALL TIMES THE PROPERTY OF ROCKY MOUNTAIN PLAN CO., LLC, ITS SUCCESSORS AND ASSIGNS



- ### FEATURES:
- MAIN LEVEL PRIMARY SUITE AND A SPACIOUS OPEN FLOOR PLAN DESIGNED WITH AGING-IN-PLACE CONSIDERATIONS
 - MODERN FARMHOUSE STYLE
 - SPACE FOR YOUR WORK AND HOBBIES, INCLUDING A STUDY, A CRAFT ROOM WITH AN EN SUITE AND OUTDOOR LIVING ACCESS, AND SHOP SPACE IN THE GARAGE



VISIT WWW.ROCKYMOUNTAINPLAN.COM TO ORDER THIS PLAN