



# STANLEY PEAK

2-5 Bedrooms | 2.5-4.5 Baths | 3 Car Garage

**MAIN LEVEL:**  
OPT. LOWER LEVEL:  
**TOTAL FINISHED:**

**3579 SQ FT**  
**2665 SQ FT**  
**6244 SQ FT**

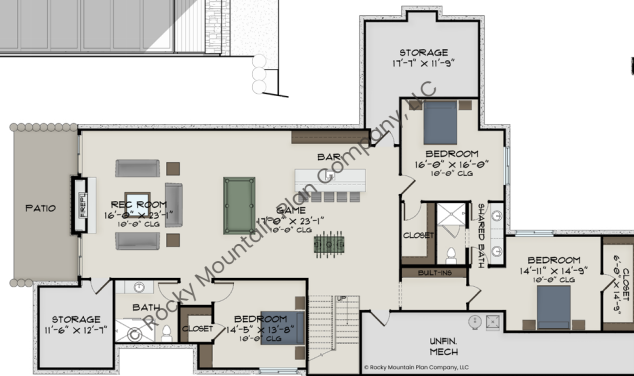
**FOOTPRINT:**  
**96' WIDE**  
**101' DEEP**

SCAN HERE:



## FEATURES:

- MODERN OPEN FLOOR PLAN WITH OLD WORLD DETAILING AND STYLE, INCLUDING BEAMED GREAT ROOM AND FOCAL-POINT FIREPLACE
- GOURMET KITCHEN WITH A LARGE WORKING PANTRY BEHIND FOR PREPWORK
- PLENTY OF ROOM FOR ENTERTAINING, INCLUDING AN EXPANSIVE COVERED PATIO, SIX-SEAT KITCHEN ISLAND, AND FORMAL DINING AREA
- LUXE MAIN LEVEL FEATURES A RELAXING PRIMARY SUITE, A STUDY FOR WORKING FROM HOME, AND A SECOND BEDROOM
- OPTION TO EXPAND THIS HOME WITH A LOWER LEVEL, ADDING THREE ADDITIONAL BEDROOMS PLUS A REC ROOM WITH A BAR AND GAME AREA



PLANS, IMAGES, AND COPIES THEREOF ARE PROTECTED UNDER THE COPYRIGHT LAWS OF THE UNITED STATES AND SHALL REMAIN AT ALL TIMES THE PROPERTY OF ROCKY MOUNTAIN PLAN CO., LLC, ITS SUCCESSORS AND ASSIGNS



VISIT [WWW.ROCKYMOUNTAINPLAN.COM](http://WWW.ROCKYMOUNTAINPLAN.COM) TO ORDER THIS PLAN