



# LODGEPOLE

2-4 Bedrooms | 2.5-4.5 Baths | 3 Car Garage

**MAIN LEVEL:**  
OPT. LOWER LEVEL:  
**TOTAL FINISHED:**

**2243 SQ FT**  
1533+ SQ FT  
**3776+ SQ FT**

**FOOTPRINT:**  
54' WIDE  
87' DEEP

SCAN HERE:

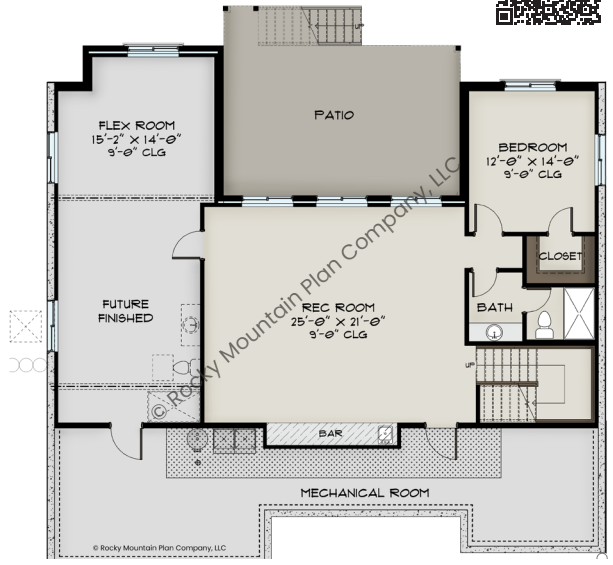


PLANS, IMAGES, AND COPIES THEREOF ARE PROTECTED UNDER THE COPYRIGHT LAWS OF THE UNITED STATES AND SHALL REMAIN AT ALL TIMES THE PROPERTY OF ROCKY MOUNTAIN PLAN CO., LLC, ITS SUCCESSORS AND ASSIGNS



**MAIN LEVEL**  
2243 SQUARE FEET  
859 SF GARAGE  
101 SF PORCH  
344 SF DECK

- FEATURES:**
- MOUNTAIN FARMHOUSE WITH AN OPEN FLOOR PLAN
  - ONE-LEVEL LIVING
  - AMPLE PRIMARY SUITE WING AND OUTDOOR LIVING
  - OPTION TO EXPAND WITH BASEMENT / LOWER LEVEL WALKOUT FLEXIBILITY



**OPT. LOWER LEVEL**  
1533 SQUARE FEET  
499 SF UNFINISHED



ANGLED RIGHT/REAR VIEW  
SHOWN WITH WALKOUT LOWER LEVEL

