

ANGLED RIGHT/REAR VIEW



ANGLED FRONT/RIGHT VIEW

GOLDFINCH

3 Bedrooms | 2.5 Baths | 2 Car Garage

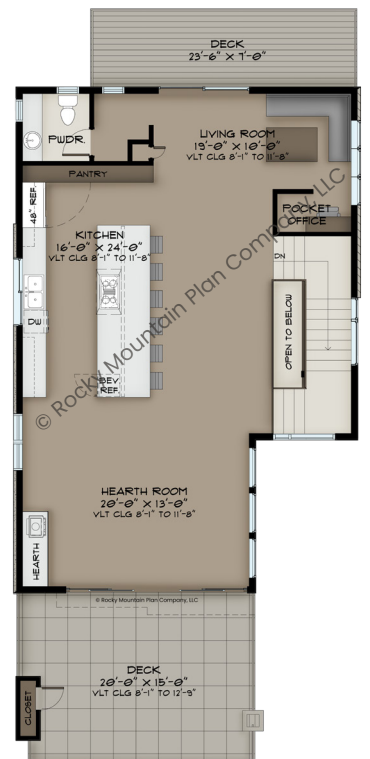
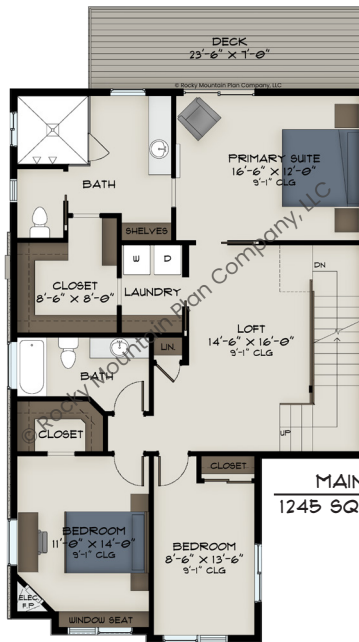
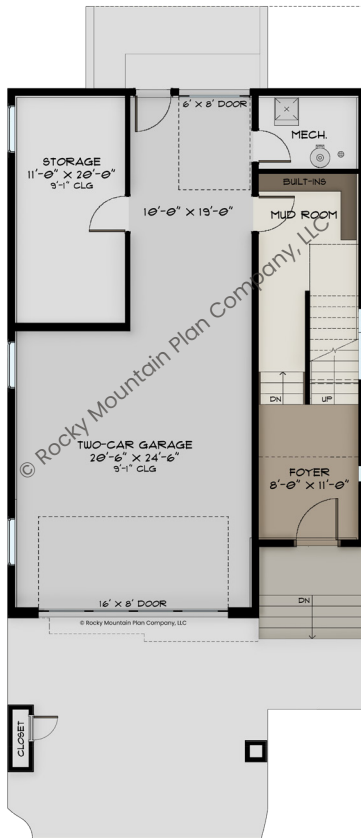
MAIN LEVEL: 1245 SQ FT
 UPPER LEVEL: 1214 SQ FT
 LOWER LEVEL: 566 SQ FT
TOTAL FINISHED: 3025 SQ FT

FOOTPRINT:
 30' WIDE
 58' DEEP

SCAN HERE:



PLANS, IMAGES, AND COPIES THEREOF ARE PROTECTED UNDER THE COPYRIGHT LAWS OF THE UNITED STATES AND SHALL REMAIN AT ALL TIMES THE PROPERTY OF ROCKY MOUNTAIN PLAN CO., LLC, ITS SUCCESSORS AND ASSIGNS



FEATURES:

- NARROW FOOTPRINT MAKES THIS HOME AN IDEAL FIT FOR A SLIM NEIGHBORHOOD LOT OR URBAN INFILL
- UPPER LEVEL FEATURES KITCHEN AND LIVING SPACE, GUARANTEEING THE BEST VIEW
- GENEROUS DECK FOR ENTERTAINING
- PRIMARY SUITE FEATURES PRIVATE DECK AND LAUNDRY ACCESS
- CONTEMPORARY DESIGN AND ANGLES LEND MODERN CURB APPEAL

