



FISHERS PEAK

2-5 Bedrooms | 2.5-4.5 Baths | 4 Car Garage

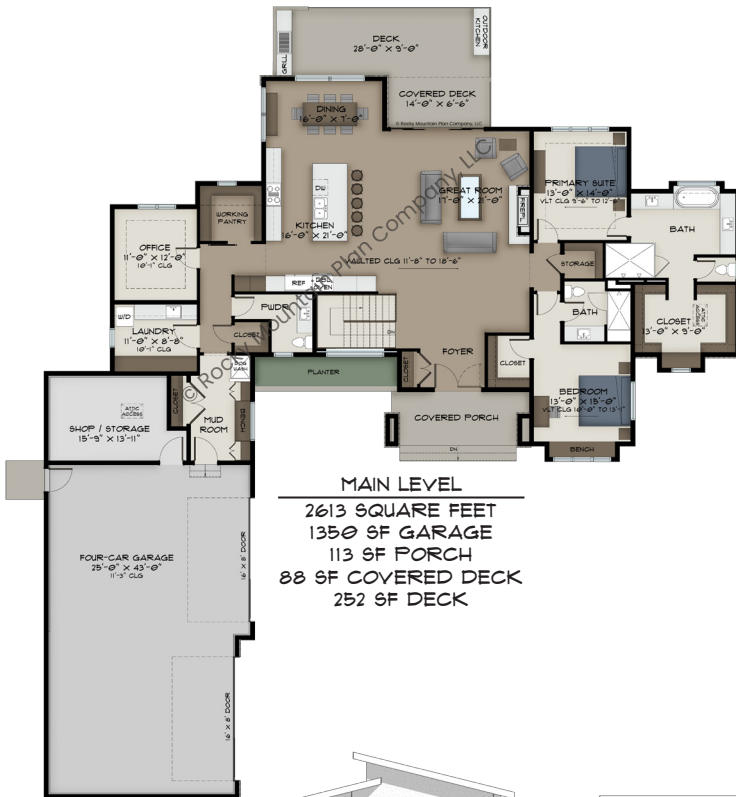
MAIN LEVEL: 2613 SQ FT
OPT. LOWER LEVEL: 2323 SQ FT
TOTAL FINISHED: 4936 SQ FT

FOOTPRINT:
 90' WIDE
 102' DEEP

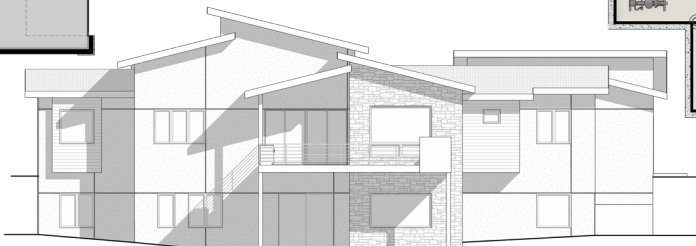
SCAN HERE:



PLANS, IMAGES, AND COPIES THEREOF ARE PROTECTED UNDER THE COPYRIGHT LAWS OF THE UNITED STATES AND SHALL REMAIN AT ALL TIMES THE PROPERTY OF ROCKY MOUNTAIN PLAN CO., LLC, ITS SUCCESSORS AND ASSIGNS



- FEATURES:**
- MODERN ANGLES AND VAULTED CEILINGS BRING CONTEMPORARY CURB APPEAL TO THIS COMFORTABLE OPEN FLOOR PLAN
 - GOURMET KITCHEN FEATURES A LARGE ISLAND AND WORKING PANTRY
 - ACCESSIBLE ONE-LEVEL LIVING INCLUDES TWO MAIN LEVEL BEDROOMS PLUS A STUDY TO WORK FROM HOME
 - OPTIONAL LOWER LEVEL EXPANDS THIS HOME TO ADD THREE ADDITIONAL BEDROOMS, PLUS A STUDY, HOME GYM, AND REC ROOM WITH A BAR



REAR ELEVATION SHOWN WITH WALKOUT LOWER LEVEL



VISIT WWW.ROCKYMOUNTAINPLAN.COM TO ORDER THIS PLAN