



ROCKY MOUNTAIN PLAN CO.
rockymountainplan.com

DESERT MARIGOLD

2-5 Bedrooms | 2.5-4.5 Baths | 3 Car Garage

MAIN LEVEL:
OPT. LOWER LEVEL:
TOTAL FINISHED:

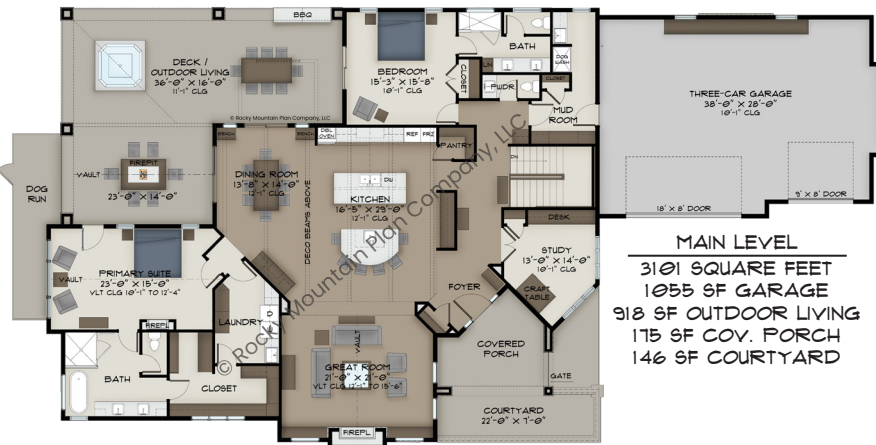
3101 SQ FT
2244 SQ FT
5345 SQ FT

FOOTPRINT:
116' WIDE
61' DEEP

SCAN HERE:

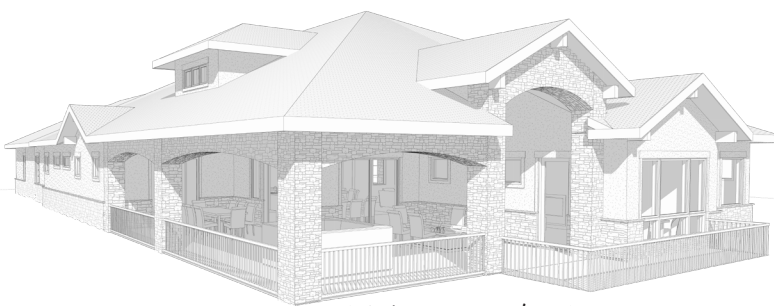


PLANS, IMAGES, AND COPIES THEREOF ARE PROTECTED UNDER THE COPYRIGHT LAWS OF THE UNITED STATES AND SHALL REMAIN AT ALL TIMES THE PROPERTY OF ROCKY MOUNTAIN PLAN CO., LLC, ITS SUCCESSORS AND ASSIGNS



FEATURES:

- AMPLE INDOOR AND OUTDOOR LIVING SPACE, TALL CEILINGS THROUGHOUT, AND AN OPEN FLOOR PLAN ACCENTED WITH BUILT-INS AND WARM DETAILS MAKE THIS HOME EXCEPTIONALLY COMFORTABLE
- GOURMET KITCHEN AT CENTER OF HOME AND INDOOR AND OUTDOOR DINING AREAS OFFER IMPRESSIVE ENTERTAINING POSSIBILITIES
- MAIN LEVEL PRIMARY SUITE FEATURES LAUNDRY AND DECK ACCESS, PLUS A FIREPLACE AND SITTING AREA
- OPTION TO FINISH LOWER LEVEL ADDS A REC AND GAME ROOM, BAR, HOME GYM, AND THREE ADD'L BEDROOMS



ANGLED RIGHT/REAR VIEW

OPT. LOWER LEVEL
2244 SQUARE FEET
858 SF UNFINISHED



VISIT WWW.ROCKYMOUNTAINPLAN.COM TO ORDER THIS PLAN