



ROCKY MOUNTAIN PLAN CO.
rockymountainplan.com

CRESCENT LAKE

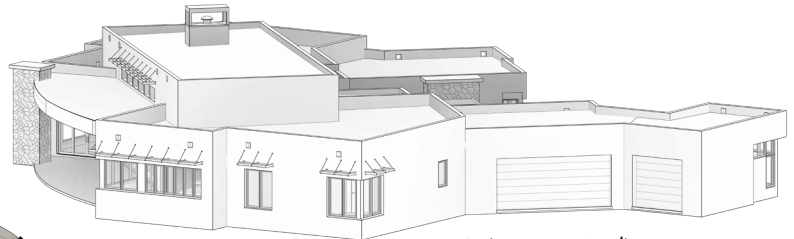
4-5 Bedrooms | 3.5 Baths | 3 Car Garage

MAIN LEVEL:
TOTAL FINISHED:

4792 SQ FT
4792 SQ FT

FOOTPRINT:
120' WIDE
109' DEEP

SCAN HERE:



ANGLED REAR/LEFT VIEW



MAIN LEVEL
4792 SQUARE FEET
981 SF GARAGE
616 SF COV. PATIO
61 SF PORCH

FEATURES:

- A THOUGHTFUL APPROACH TO PROPORTION, LIGHT, AND FLOW MAKE THIS MODERN MINIMALIST HOME SPECTACULAR
- OPEN FLOOR PLAN MADE FOR ENTERTAINING, WITH OUTDOOR SPACE THAT INCLUDES A GENEROUS FRONT COURTYARD AND REAR COVERED PATIO THAT CAN BE ACCESSED THROUGH SLIDING GLASS PANELS
- PLENTY OF BEDROOMS FOR FAMILY, HOSTING GUESTS, OR TO USE AS HOME OFFICES OR EXERCISE SPACE
- TUCKED AWAY CLOSETS THROUGHOUT KEEP THIS HOME TIDY
- STAIR-FREE, ONE-LEVEL LIVING FOR LUXURIOUS AGING-IN-PLACE

PLANS, IMAGES, AND COPIES THEREOF ARE PROTECTED UNDER THE COPYRIGHT LAWS OF THE UNITED STATES AND SHALL REMAIN AT ALL TIMES THE PROPERTY OF ROCKY MOUNTAIN PLAN CO., LLC, ITS SUCCESSORS AND ASSIGNS



VISIT WWW.ROCKYMOUNTAINPLAN.COM TO ORDER THIS PLAN