



BLUE RIVER

3-4 Bedrooms | 2.5-3.5 Baths | 3 Car Garage

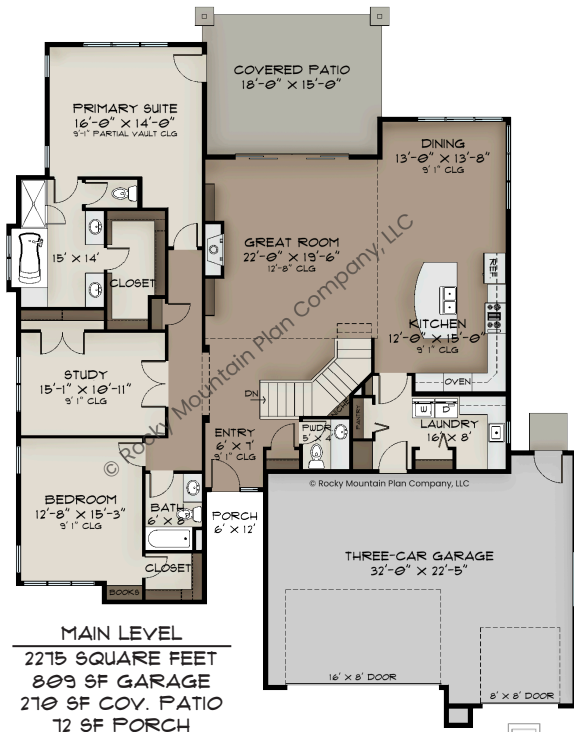
MAIN LEVEL: 2275 SQ FT
OPT. LOWER LEVEL: 1505 SQ FT
TOTAL FINISHED: 3780 SQ FT

FOOTPRINT:
 59' WIDE
 71' DEEP

SCAN HERE:



PLANS, IMAGES, AND COPIES THEREOF ARE PROTECTED UNDER THE COPYRIGHT LAWS OF THE UNITED STATES AND SHALL REMAIN AT ALL TIMES THE PROPERTY OF ROCKY MOUNTAIN PLAN CO., LLC, ITS SUCCESSORS AND ASSIGNS



MAIN LEVEL
 2275 SQUARE FEET
 809 SF GARAGE
 210 SF COV. PATIO
 12 SF PORCH

- ### FEATURES:
- MODERN ANGLES BRING CONTEMPORARY CURB APPEAL TO THIS COMFORTABLE OPEN FLOOR PLAN
 - SECLUDED MAIN LEVEL PRIMARY SUITE ENJOYS REAR SITE VIEWS AND PRIVATE PATIO ACCESS
 - GREAT ROOM FEATURES STATEMENT FIREPLACE AND HIGH CEILINGS
 - GENEROUS STUDY IDEAL FOR WORKING FROM HOME
 - SECOND BEDROOM ON THE MAIN LEVEL ALLOWS FOR EASY STAIR-FREE HOSTING
 - OPTIONAL LOWER LEVEL EXPANDS THIS HOME TO ADD AN ADDITIONAL BEDROOM, A SPACIOUS HOME THEATER OR GYM, AND A REC ROOM WITH A BAR



OPT. LOWER LEVEL
 1505 SQUARE FEET
 744 SF UNFINISHED



REAR ELEVATION



VISIT WWW.ROCKYMOUNTAINPLAN.COM TO ORDER THIS PLAN