



ARCTIC LUPINE

2-4 Bedrooms | 2.5-3.5 Baths | 2 Car Garage

MAIN + UPPER: 1990 SQ FT
MAIN LEVEL: 1358 SQ FT
UPPER LEVEL: 632 SQ FT
OPT. LOWER LEVEL: 1150 SQ FT
TOTAL FINISHED: 3140 SQ FT

FOOTPRINT:
 58' WIDE
 75' DEEP

SCAN HERE:



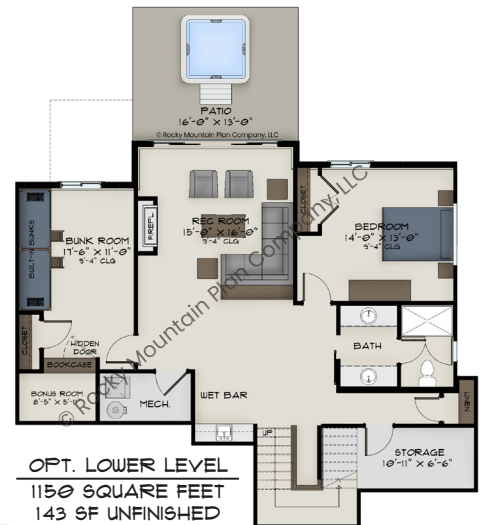
PLANS, IMAGES, AND COPIES THEREOF ARE PROTECTED UNDER THE COPYRIGHT LAWS OF THE UNITED STATES AND SHALL REMAIN AT ALL TIMES THE PROPERTY OF ROCKY MOUNTAIN PLAN CO., LLC, ITS SUCCESSORS AND ASSIGNS



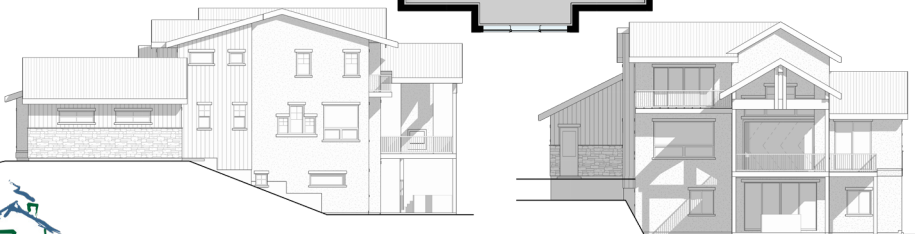
MAIN LEVEL
 1358 SQUARE FEET
 645 SF GARAGE
 208 SF COVERED DECK
 90 SF COVERED PORCH
 64 SF DECK

UPPER LEVEL
 632 SQUARE FEET
 64 SF BALCONY

- FEATURES:**
- MODERN CABIN WITH SOARING VAULTED CEILINGS, EXPANSIVE VIEWS THROUGH FOYER AND GREAT ROOM, AND INDOOR AND OUTDOOR FIREPLACES
 - PRIVATE UPPER-LEVEL PRIMARY SUITE FEATURING A COZY LOFT AND BALCONY
 - OPTIONAL LOWER LEVEL ADDS A REC ROOM, BEDROOM, AND A BUNK ROOM WITH FUN HIDDEN BONUS ROOM
 - OPEN FLOOR PLAN WITH GOURMET KITCHEN AND WORKING PANTRY



OPT. LOWER LEVEL
 1150 SQUARE FEET
 143 SF UNFINISHED
 208 SF PATIO



RIGHT AND REAR ELEVATIONS SHOWN WITH WALKOUT LOWER LEVEL



VISIT WWW.ROCKYMOUNTAINPLAN.COM TO ORDER THIS PLAN