

Industrial Wireless Maximum 0-10 or 0-30ft Level Monitoring System with Vision

15PSI Sensor allows for over 150ft of Burst Pressure

AC, DC or Solar Power Kits

Rugged Design with Clear View Window and LCD

Optional 4G or WiFi Wireless Connectivity

### SCADASiren™

The SCADASiren™ is a multi-application wall mount monitoring system with LCD and flow totalizer. Multiple SCADA output options are available including 4-20 mA, RS485, serial and analog output modules.

Optional USB allows for onsite data collection not requiring external connection to a field computer to collect data.

Automatically upload data for analysis to BlueLive® Cloud, DropBox®, GoogleDrive® or FTP location of your choice. Future proof worldwide LTE wireless module supports multiple countries and cellular frequencies, WiFi option also supported.

Built-in multi-media platform allows direct connection of our vision camera taking simultaneous pictures that correlate directly with sensor readings. Receive alarm emails with not only critical data but also images supporting the condition.

Automatically upload data for analysis to BlueLive® Cloud, DropBox®, GoogleDrive® or FTP location of your choice. Future proof worldwide LTE wireless module supports multiple countries and cellular frequencies, WiFi option also supported.

### SPECIFICATION

**Enclosure:** 10 x 8 x 4in (HxWxD), wall mount, fiberglass reinforced polyester, gray, single-door, (2) twist-lock latches, SAR acrylic window.

**Data Storage** Internal Storage - 2.5 yr@15 min Sample Rate  
USB - over 20 years

**Total Images** Internal Memory 500 (640x480) Images, USB over one million, Storage changes with image resolution"

**Output:** RS485, Sampler Pulse, LCD

**Power:** Logger: 3.3 V, Internal: 12 V, External: Max 16 V

**Operating Temp.** -40 to 60°C (-40 to 140°F)

**Connectors:** Spring Load Compression Fit

**Power:** Internal 12 V AC / DC Power Supply

**Sample Rate:** User Defined, 1 to 60 minutes

**Software:** Field-Siren Windows GUI, Cloud Programmable

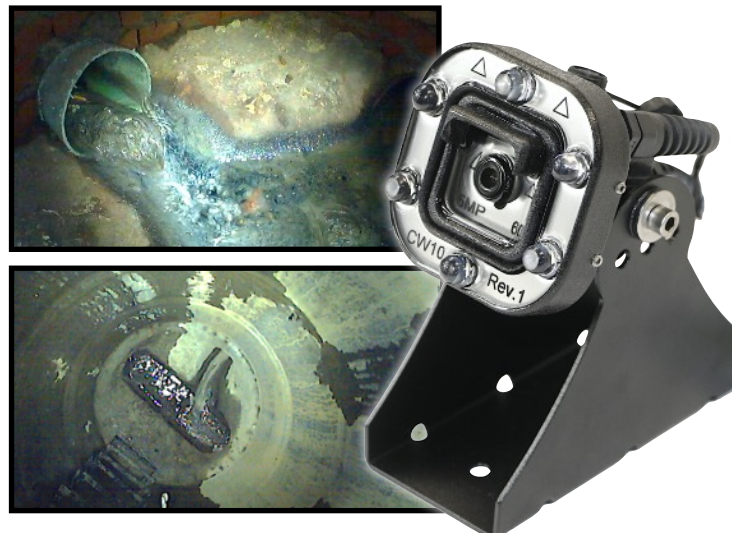
**Protocol:** Compressed Binary

**Wireless:** World Wide Cellular: 4G LTE and WiFi

**Data Transfer:** Blue-Live® - DropBox® - GoogleDrive® - FTP

ALL PRODUCT, PRODUCT SPECIFICATIONS AND DATA ARE SUBJECT TO CHANGE WITHOUT NOTICE TO IMPROVE RELIABILITY, FUNCTION, DESIGN OR OTHERWISE. ... It shall be the customer's responsibility to validate that a particular product with the properties described in the product specification is suitable for use in a particular application.

### Monitor With Vision®





# PHN DEPTH PRESSURE DEPTH SENSOR Product Specification Sheet



Stainless Steel Transducer Element

Vortex Shedding Hydrostatic Shield

Use in Static and Flowing Conditions

Waterproof, Impact Resistant Urethane Construction

Streamline Design Minimizes Fouling

## Technical Specifications:

Dimensions: 5" X 1.25" X 1"

Construction: 316L Stainless Steel Material

Diaphragm: Tantalum or optional Titanium

ENV Rating: Fully Submersible

Power: Sensor Input: 5V DC

Transducer: 19mm Diameter

Gauge: Absolute

Pressure Ranges: 5 PSI or 15 PSI

Resolution  
5 PSI = 1mm  
15 PSI = 2mm

Range:  
5PSI = 10ft (3m)  
15PSI = 30ft (9.14m)

Cable Vented 5 conductor, 6mm Diameter

Overpressure 1.5 times Full Scale

Linearity:  $\pm 0.15$  FS

Temperature: -40 to 125 C

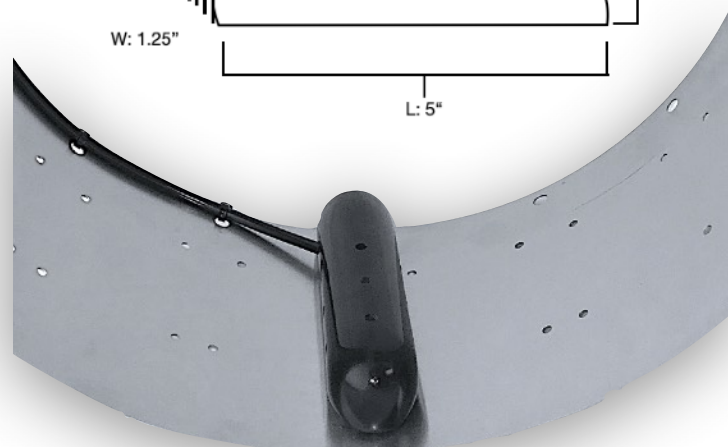
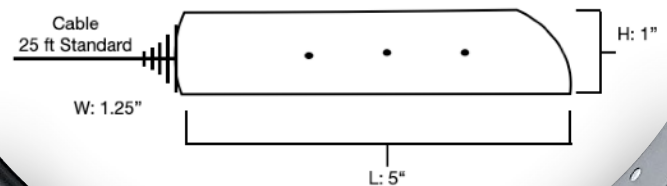
## PHN15 / PHN05 Pressure Depth Sensor

Easily monitor water depth in flowing and static conditions. PHN technology mitigates the pressure vortex caused by velocity and accurately measures the depth of water in any condition. This sensor is designed to work in a multitude of installations such as pipes, weirs, stilling wells, streams, ponds, and lakes.

In addition to the hermetically sealed stainless steel transducer, the PHN is further encapsulated using inert materials, making this a great solution for industrial and wastewater applications.

Combined with the SOLOSiren®, this low-power, fast response depth sensor makes this an ideal compact, mid to long term monitoring deployment option.

Available in both 5 and 15 PSI variants, accurately monitor a wide range of depths from a low 0.04 in (1mm) to maximum 30 ft (9.14m).



ALL PRODUCT, PRODUCT SPECIFICATIONS AND DATA ARE SUBJECT TO CHANGE WITHOUT NOTICE TO IMPROVE RELIABILITY, FUNCTION, DESIGN OR OTHERWISE. ... It shall be the customer's responsibility to validate that a particular product with the properties described in the product specification is suitable for use in a particular application.



# INDUSTRIAL 5MP VISION SENSOR

5MP Camera Sensor with High Output LED Ring

Multiple Resolution and Compression Settings

Maximum 5MP resolution

Built-in Compression

Encapsulated Electronics

## Monitor With Vision®

The Blue Siren® 5MP high output LED Camera Sensor is great for thousands of applications: sewer pipes, grease clogging, inflow and infiltration problems, monitor storm grates and implement camera based infrastructure security.

Automatically store images and send them to any server or website. Subscribe to the BlueLive® Database and see your images as they upload. Sensor readings automatically correlate with image time stamps, allowing more in-depth analysis of system conditions.

The Camera Sensor is constructed using impact resistant urethane and encapsulated using optically clear epoxy. Air is fully vacuumed out of each sensor leaving no room for condensation or moisture.

## Technical Specifications:

Pixel Resolution : 2592x1944 (Default), 2048x1536, 1920x1080, 1600x1200, 1280x960, 1024x768, 800x600, VGA, QVGA, 160x120

Sensor: 1/4" CMOS

Baud Rate: 115200bps (default), 19200bps, 38400bps, 57600bps, optional

Angle of View (FOV): 60 degree (default), 120/90/45/30/15/8 degree Optional

Focal Length: 3.6mm (default), 2.8mm/6mm/8mm/ 12mm/ 16mm/25mm Optional

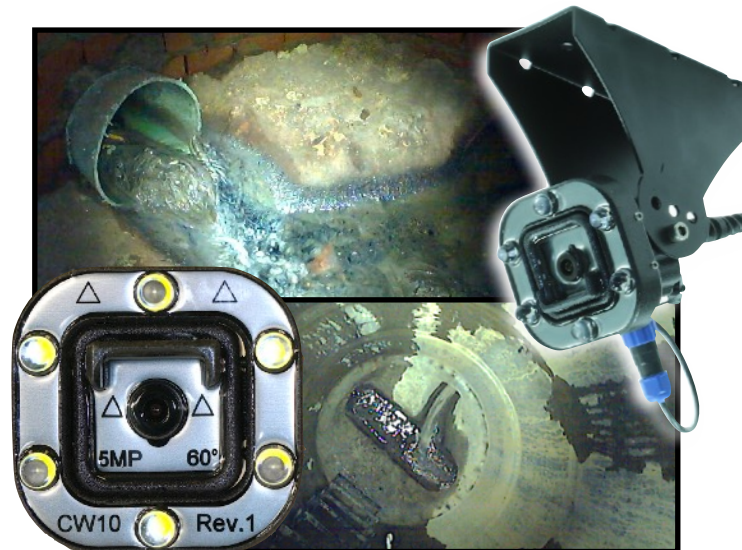
White Balance: Automatic

Operating Temperature: -4°F-140°F

Sample Rate: Minimum 1 minute

Auto Gain Control: Automatic

Exposure: Automatic



ALL PRODUCT, PRODUCT SPECIFICATIONS AND DATA ARE SUBJECT TO CHANGE WITHOUT NOTICE TO IMPROVE RELIABILITY, FUNCTION, DESIGN OR OTHERWISE. ... It shall be the customer's responsibility to validate that a particular product with the properties described in the product specification is suitable for use in a particular application.



# DATA MANAGEMENT

## Wireless Cloud Delivery and Data Analysis

*View and Analyze Real Time Data*

*Automatic Delivery to Hosting Provider of your choice, DropBox®, Google Drive®, FTP, email, BlueLive®*

*Batch View Line and Scatter Plots*

*Manage Large Networks*

*Multiple End Users, No Additional Fees*



### FLEXIBLE DATA PLAN AND DELIVERY OPTIONS:

Automatically upload monitor data to BlueLive®, DropBox®, GoogleDrive®, email, or a FTP location of your choice. The internal worldwide 4G LTE wireless module supports multiple countries and cellular frequencies. In addition, WiFi connectivity options also available for infrastructure implementation. Provide your own SIM card and cellular network or have Blue Siren provide one for you. Blue Siren has low cost options on major networks such as AT&T® and Verizon Wireless®.



ALL PRODUCT, PRODUCT SPECIFICATIONS AND DATA ARE SUBJECT TO CHANGE WITHOUT NOTICE TO IMPROVE RELIABILITY, FUNCTION OR DESIGN OR OTHERWISE. ... It shall be the customer's responsibility to validate that a particular product with the properties described in the product specification is suitable for use in a particular application.