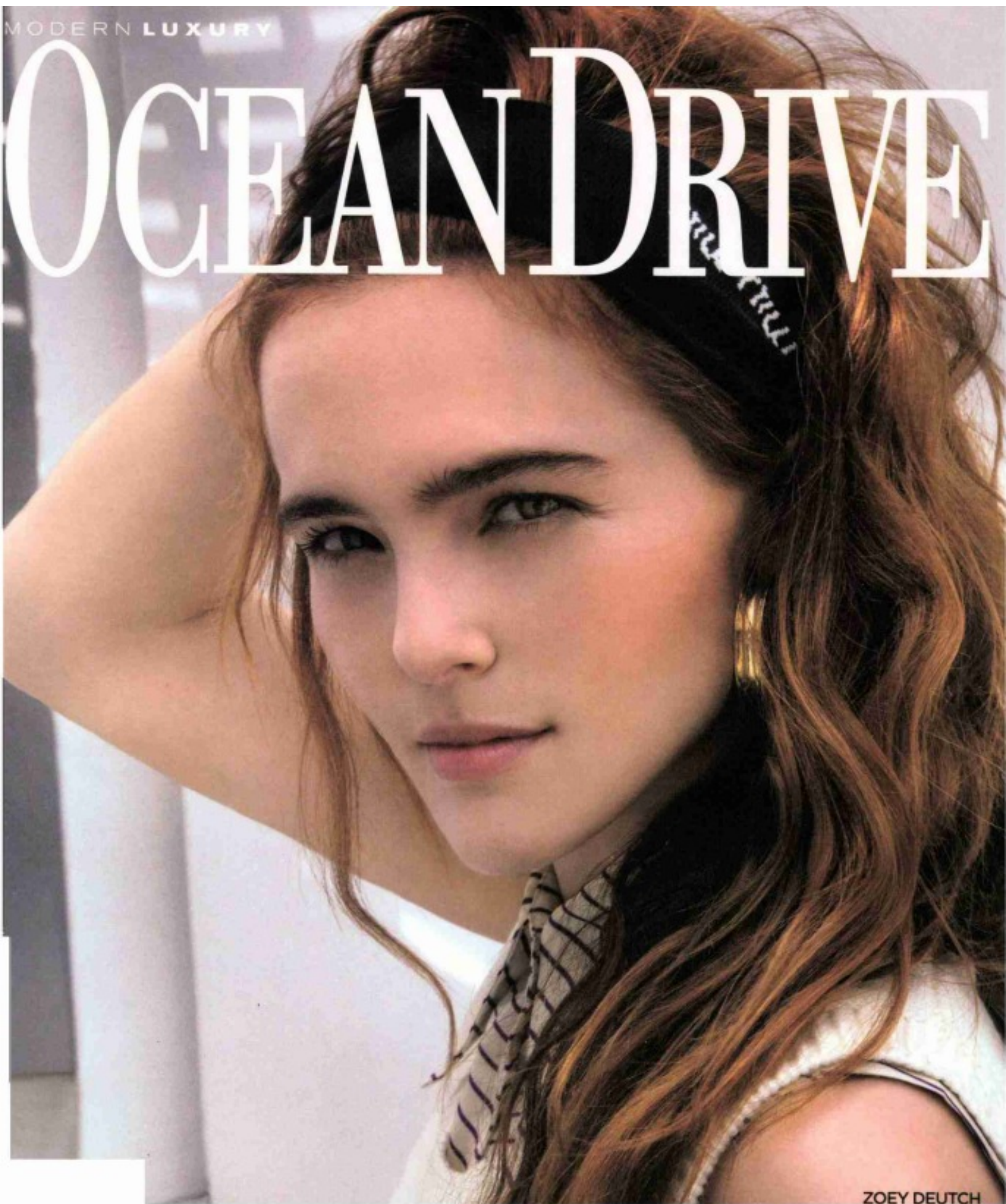


MODERN LUXURY

OCEAN DRIVE



ZOEY DEUTCH



Space

KNOWING YOUR ANGLES

DESIGNER MARIO RUIZ TAKES IT OUTSIDE WITH RH. BY PHEBE WAHL

Barcelona-based designer Mario Ruiz believes the magic is in the minutiae. "I am a designer who is very attentive to details," he explains. Ruiz joins the ranks of other designers such as Toan Nguyen, [David Sutherland](#) and [Clodagh](#) to craft an outdoor collection for RH, the **Paloma Collection by Mario Ruiz**. "The construction of the Paloma Collection is based on a complex set of small connection details that build its identity," says Ruiz. "It has an elegant aesthetic that fits into any architecture and style." In other words, it works at any angle. From \$540, *The Gallery at Aventura Mall*, [rh.com](#)