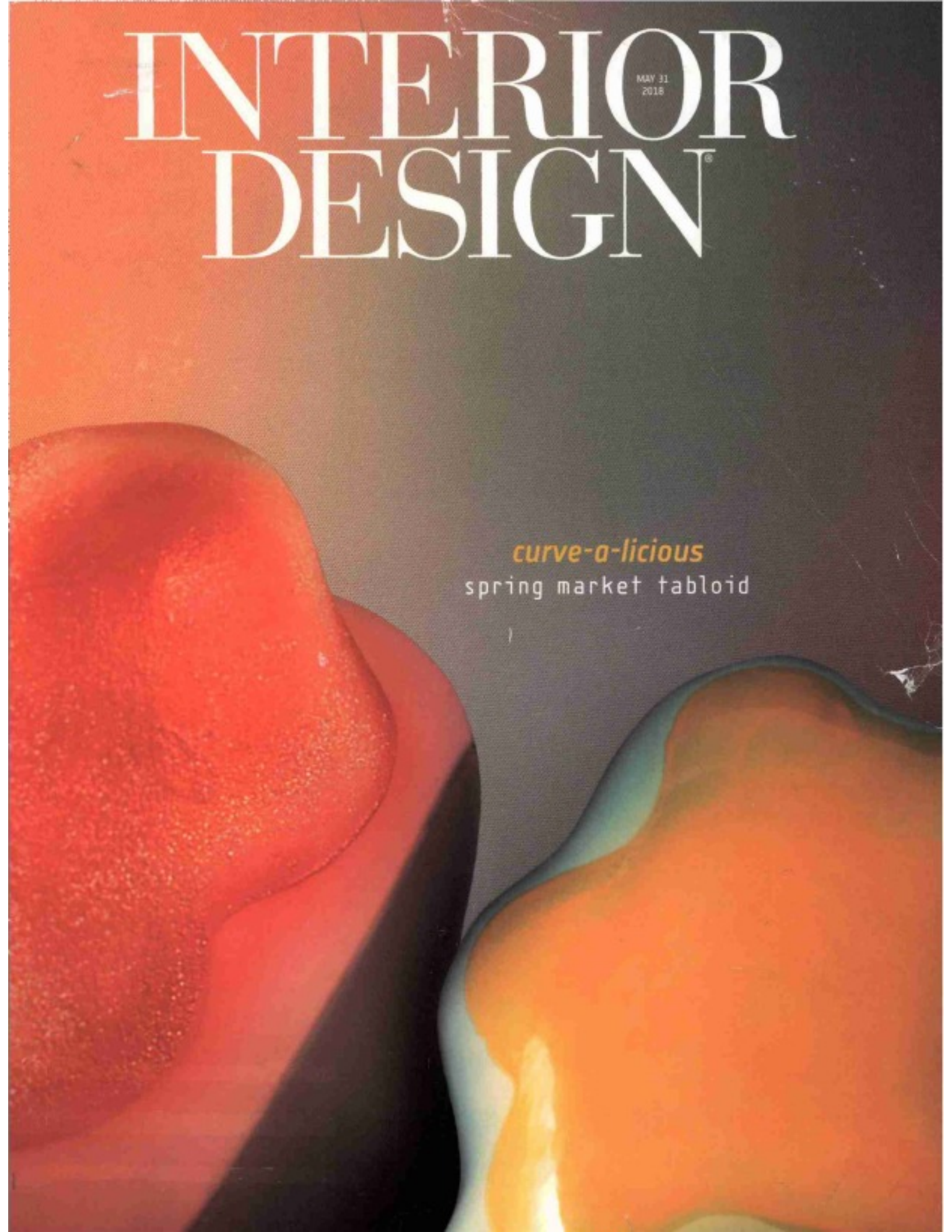


# INTERIOR DESIGN<sup>®</sup>

MAY 31  
2018

*curve-a-licious*  
spring market tabloid



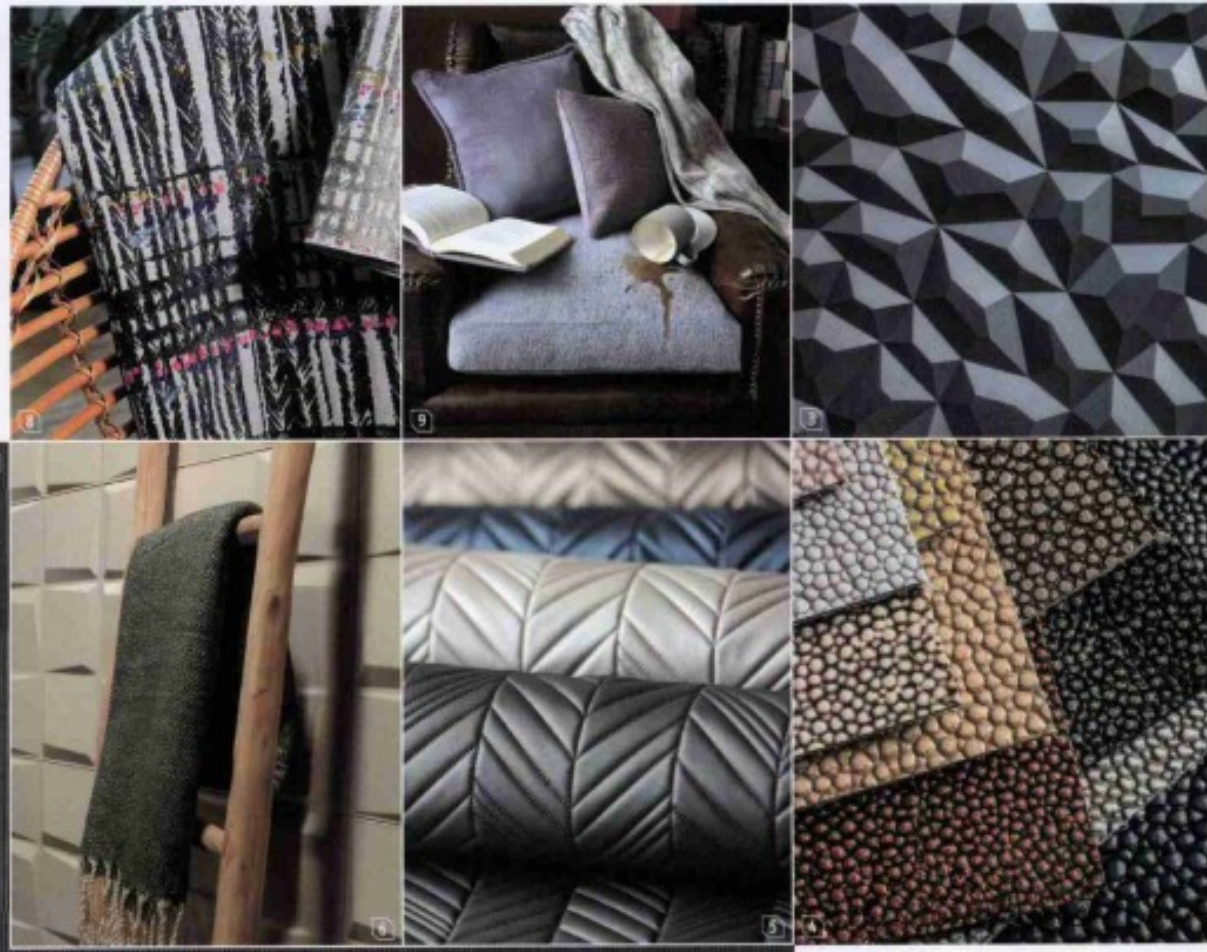




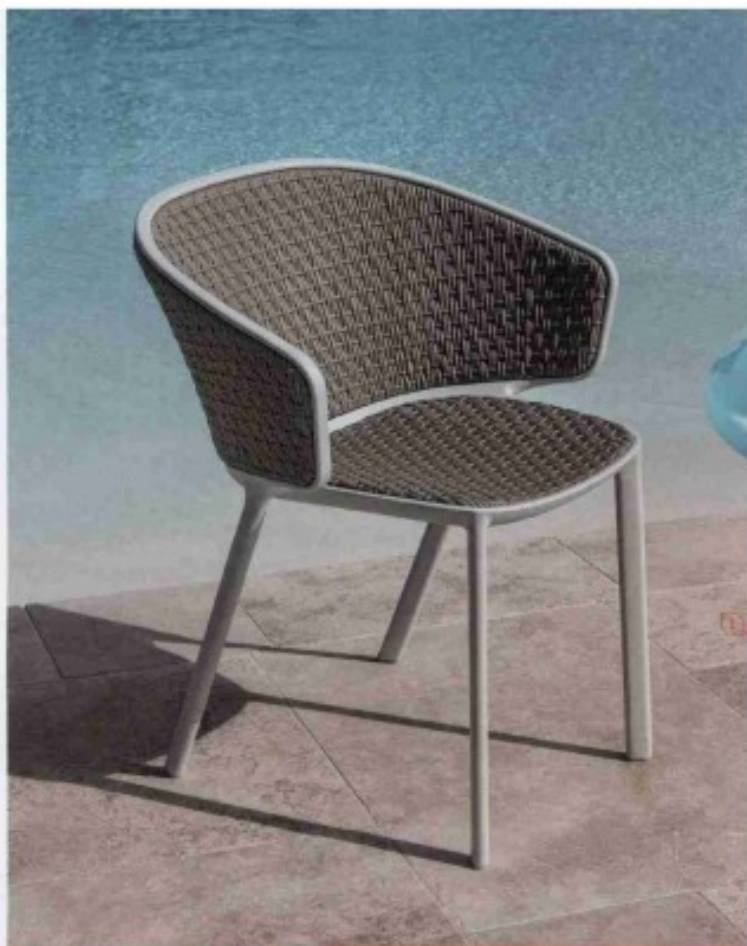
1. Raffaello Galotto's Strato tile in carved Crema Marfil marble by Lithos Design. [lithosdesign.com](http://lithosdesign.com)
2. Vinyl Chambray Type II vinyl wall covering by Phillip Jeffries. [philipjeffries.com](http://philipjeffries.com)
3. Distrutto laminate-faced MDF panel by Soelberg Industries. [soelberg.com](http://soelberg.com)
4. Shagreen embossed cowhide by Edelman. [edelmanleather.com](http://edelmanleather.com)
5. Divergent polyester-backed polyurethane fabric by Concertex. [concertex.com](http://concertex.com)
6. Oberon 3-D wall covering made from recycled plant fiber by WallArt. [mywallart.com](http://mywallart.com)
7. Ribsy wool-felt wall covering with cork-composite backing by Submaterial through FilzFelt. [filzfelt.com](http://filzfelt.com)
8. Mai Tai Chenille polyester-acrylic blend fabric by Valley Forge. [valleyforge.com](http://valleyforge.com)
9. Natural Selection solution-dyed acrylic fabric by Perennials Fabrics. [perennialsfabrics.com](http://perennialsfabrics.com)

**feelin' it**  
**Textured options**  
**with just the right**  
**touch**

**FABRIC & WALL covering**







1  
2  
3



4

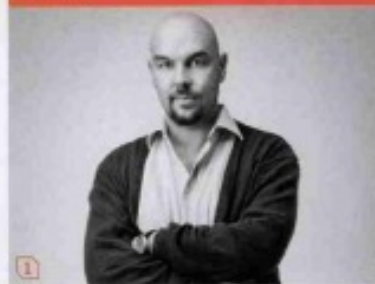


**Luca Nichetto**  
for **Ethimo**

**Cédric Ragot**  
for **Roche Bobois**

**David Sutherland**  
for **RH**

**Noé Duchaufour-Lawrance**  
for **Ligne Roset**



**product** Pluvia  
**standout** Classic furniture profiles get a dose of '80s-Italian élan in the designer's curvaceous aluminum stacker with woven synthetic fiber seat. [ethimo.com](http://ethimo.com)

**product** Cute Cut  
**standout** Shapely cocktail tables available in turquoise, red, or cream gloss lacquer and topped with varnished walnut veneer recall the luxe sheen of yacht decks. [roche-bobois.com](http://roche-bobois.com)

**product** Olema  
**standout** An angular lounge chair in weathered gray teak inspired by 1930s French design features a dramatic raked back—perfectly angled for repose. [rh.com](http://rh.com)

**product** Ottoman Outdoor  
**standout** A modern take on the trad Moroccan pouf, this indoor fave is now outdoor-ready, courtesy of thermoformed ABS with polyester upholstery and foam padding—and, on the accompanying settee, a hidden drain. [ligne-roset.com](http://ligne-roset.com)