

CTC & G

The background of the cover is a photograph of a lush garden. In the foreground, there are numerous bright orange and pink wildflowers, possibly Black-eyed Susans, growing among tall green grasses. In the middle ground, a row of solar panels is mounted on silver metal poles, extending from the left side towards the background. The background is filled with dense green trees under a clear blue sky.

Connecticut Cottages and Gardens

COTTAGESGARDENS.COM | MAY 2019

CREATING CONNECTIONS



MARKETPLACE

ON NEUTRAL GROUND

A quieter color palette accentuates the textural qualities and shapely appeal of these all-weather pieces



MIDCENTURY MIX

The Mesa lounge chair mixes tactile materials of teak and hand-woven all-weather wicker. Spanish designer Mario Ruiz was influenced by midcentury modern shapes to create this sculptural collection for **RH**. \$1,046. [Greenwich, rh.com](http://Greenwich.rh.com).



CANE DO

Designed by Christophe Pillet for **Ethimo**, the Grand Life lounge armchair pairs picked teak with taupe roping resembling caning for a sophisticated outdoor piece. \$1,460, available through **Walters**. [D&D \(T\), waltersnyc.com, ethimo.com](http://D&D (T), waltersnyc.com, ethimo.com).

TEAK TIME

Terry Hunziker designed the Camano Yachting lounge chair for **Sutherland**. A powder-coated aluminum frame is fitted with teak slats. Twenty color finish options are available, including Snow, pictured here. Price available upon request. [D&D \(T\), sutherlandfurniture.com](http://D&D (T), sutherlandfurniture.com).



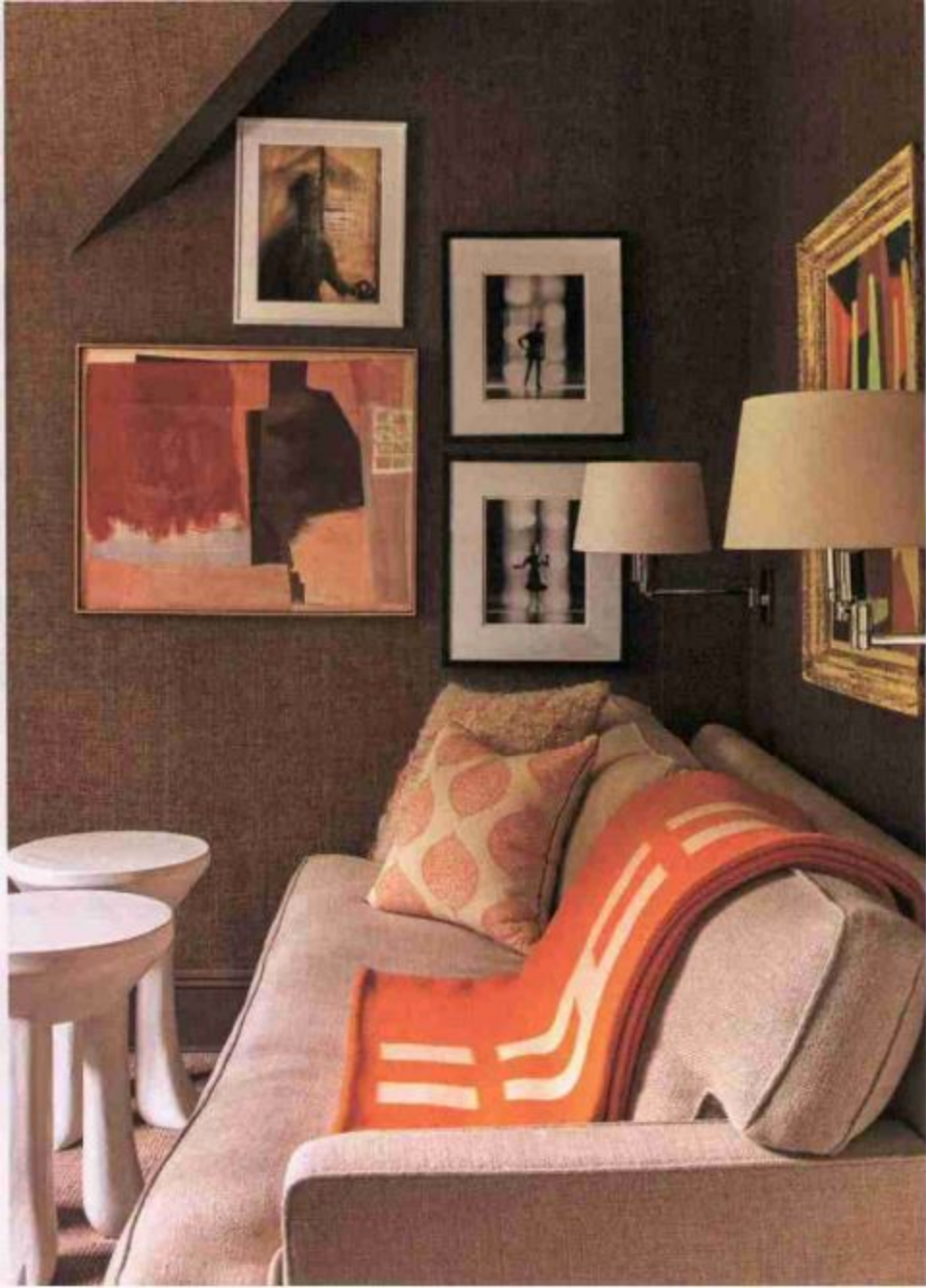
DRESSY CASUAL

The Watson dining chair by **Munder Skiles** features a Chippendale back in a black metal finish with a slatted teak seat. Seven different back options are offered in six standard colors. \$1,920. NYDC, munder-skiles.com.

MOROCCAN DETAILS

Influenced by his travels to Morocco, Richard Frinier dreamed up the design of the Tangier outdoor collection for **Century Furniture**. The open-weave fretwork motif of the Raf sectional is inspired by Moorish architecture and constructed from a weather-resistant polyethylene fiber. \$15,540, available through **Outdoor Designer Showroom (T)**, Stamford, 203-359-3526. centuryfurniture.com.





RT Facts. **Master bathroom: Chair,** Montage Antiques. **Guest room: Chairs,** Duane Modern. **Floor lamp,** Patrick Parish. **Trunk,** George Home. **Office: Sofa,** Duane Modern. **Blanket,** Hermès. **Pillow,** Privet House. **Swing arm lamps,** Hinson. **Artwork,** Elizabeth MacDonald and Ross Bleckner. **Prints,** Geoff Spear. **Wallpaper,** Phillip Jeffries. **Stools,** Sutherland. **Pages 90–91: Pool area: Outdoor furniture,** Richard Schultz. **Terrace: Umbrellas,** RH. **Furniture,** McGuire.