

SUTHERLAND



91072

GREAT LAKES THREE-SEAT SOFA

SHOWN IN SAND DOLLAR POWDER COAT AND WEATHERED FINISH

WIDTH	DEPTH	HEIGHT	ARM HEIGHT	SEAT HEIGHT	SEAT HEIGHT (with cushions)
72 in	35 in	30 in	21 in	12 in	17 in
183 cm	89 cm	76 cm	53 cm	31 cm	43 cm
COM	COL	WELT	FLANGE	TRIM	
14.5 yds	203 sqft	3 yds	3 yds	32 yds	

Powder coated aluminum frame with teak slats. Teak slats available in Weathered, Natural or Clear Sealer finish.

91072-E EXTERIOR CUSHIONS Cushions for exterior use are made of flow-through foam with Dacron.

FC91072 FURNITURE COVER

AVAILABLE OUTDOOR FINISHES



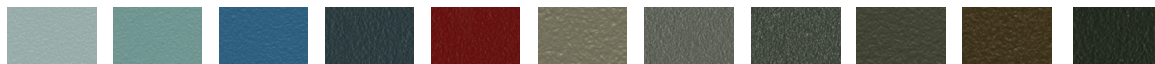
Natural Clear Sealer Weathered

AVAILABLE POWDER COAT FINISHES

Powder coat available in 21 standard colors. Custom colors available.



Snow Chalk Bone Desert Putty Fog Agave Lichen Pine Verdigris



Glacier Tidal Aegean Midnight Oxblood Sand Dollar Steel Graphite Storm Bronze Black

PHONE 214.638.4161 | TOLL FREE 800.717.8325 | FAX 214.638.5004 | SUTHERLANDFURNITURE.COM

The design of these items are protected by one or more U.S. and foreign patents and patents pending, (including U.S. Patents D433,835 S, D431,380 S, D443,150 S, D431,119 S, D426,716 S, D459,904 S, D454,439 S, D455,277 S, D487,988 S, D490,995 S, D473,388 S, D473,060 S, D433,576 S, D474,347 S, D489,912 S, D501,732 S, D545,075 S, D545,584 S, D547,961 S, D549,978 S, D572,046 S, D597,323 S), copyrights and/or other intellectual property rights. Legal action will be pursued against any unauthorized copies or replications of these designs.