

## KEL-DPU 24

Heavy-Duty Cable Entry Plates  
with High Strain Relief



Click to shop online @ [www.trimantec.com](http://www.trimantec.com) or call 336-767-1379



KEL-DPU 24 also available in black.



KEL-DPU 24 on request also available with threaded bushings.



Tool-free assembly possible due to plug-in function

### Product Description

KEL-DPU entry plates are designed to route and seal standard cables (from 3.2 mm to 20.5 mm in diameter) in limited space with protection class IP65/IP66 and up to NEMA 4X.

The KEL-DPU is particularly characterized by its robust frame and the increased strain relief of the routed cables.

The KEL-DPU 24 matches exactly the cut-out dimensions of 24-pole standard industrial connectors.

The assembly of the KEL-DPU with cables or pneumatic hoses can be done within seconds. Simply put a small slit in the thin membrane and push standard cables through.

ST-B Plugs can be used for sealing pierced membranes if cables have been removed.



Description	Type	Order No.	Number of cables	PU
	KEL-DPU 24 13	<input type="checkbox"/> 43940 <input checked="" type="checkbox"/> 50940	10× 3.2 - 6.3 mm 3× 16 - 20.5 mm	10
	KEL-DPU 24 16	<input type="checkbox"/> 43936 <input checked="" type="checkbox"/> 50936	8× 3.2 - 5.5 mm 6× 5 - 8.5 mm 2× 9.5 - 14.5 mm	10
	KEL-DPU 24 16-1	<input type="checkbox"/> 43932 <input checked="" type="checkbox"/> 50932	2× 3.2 - 6.3 mm 9× 4 - 7.5 mm 1× 5.5 - 10.5 mm 1× 8 - 12.5 mm 3× 12 - 16.2 mm	10
	KEL-DPU 24 17	<input type="checkbox"/> 43934 <input checked="" type="checkbox"/> 50934	4× 3.2 - 6.3 mm 2× 4 - 7.5 mm 1× 5.5 - 10.5 mm 10× 8 - 12.5 mm	10

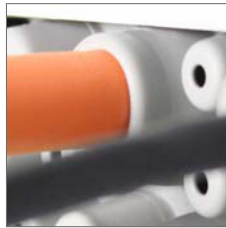
\* Only valid for gray product types \*\* Wall thickness 1.5 - 2 mm

# KEL-DPU 24

## Heavy-Duty Cable Entry Plates with High Strain Relief



Membrane on front



Conical shape on back provides additional sealing and strain relief



IP66

### Advantages

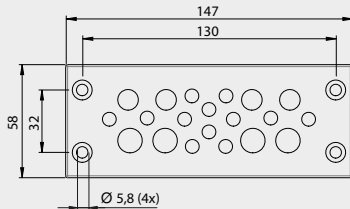
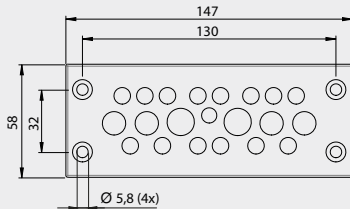
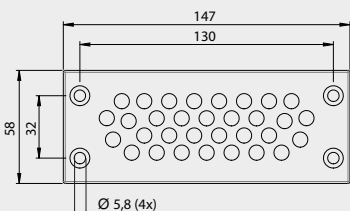
- Pluggable\*\* / screwable
- Very high stability
- High strain relief
- Very easy assembly
- High packing density
- Double cable sealing with IP65/IP66/up to NEMA 4X
- Hygienic design - free of dirt-collecting recesses

### Specifications

Material	Frame: Polypropylene (PP)
Colour	Sealing plate: Elastomer ■ gray (similar RAL 7035) ■ black
Flame class	UL94-Vo, self-extinguishing
Protection class	IP65/IP66 (certified according to DIN EN 60529:2000-09)
Temperature	- 40°C to + 90°C (static)
Properties	Halogen free, silicone free
Cut-out dimensions	36 × 112 mm / page 176 - 177
Height KEL-DPU	14.5 mm

### Accessories

ST-B Plugs	74
KEL-EMC-PF Cable collectors	119
FP Flanged plates	148 - 153

Type	Order No.	Number of cables	PU	Description
KEL-DPU 24 20	<input type="checkbox"/> 43938 <input checked="" type="checkbox"/> 50938	12× 3.2 - 5.5 mm 8× 5 - 10.5 mm	10	
KEL-DPU 24 21	<input type="checkbox"/> 43930 <input checked="" type="checkbox"/> 50930	1× 3.2 - 6.3 mm 14× 4 - 7.5 mm 4× 5.5 - 10.5 mm 2× 8 - 12.5 mm	10	
KEL-DPU 24 32	<input type="checkbox"/> 43942 <input checked="" type="checkbox"/> 50942	32× 3.2 - 6.3 mm	10	

\* Only valid for gray product types \*\* Wall thickness 1.5 - 2 mm