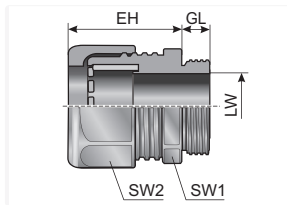
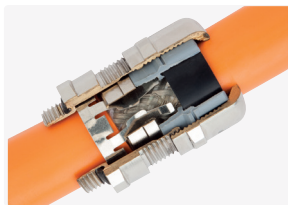


Type m-seal EMC (EMV)



Product information

With the m-seal EMC (EMV) cable fittings, simple radial and axial movement of the cable are possible, even at contact location. The contact finger surfaces with rounded edges prevent damage to the conductor. In addition, the large surface on the contact finger makes low contact resistance possible, even on loosely woven cables (the contact area does not press into the conductor).

The m-seal EMC (EMV) cable fitting features the following advantages:

- Large seal and clamping area
- With integrated strain relief
- High protection class IP 68
- High contract rating, even at vibration conditions
- Very simple and rapid assembly without tools
- Suitable for the highest requirements of today's technology
- Very good shielding attenuation

Color: Silver

UV: 1

Information, conformities and approvals



Article	Order No.	Connecting thread	Clamping range (LW) mm	Contact diameter mm	EH mm	GL mm	SW 1 / 2 mm	PU pcs.
m-seal EMC M12x1,5 3,0- 6,5 ¹⁾	84201800	M12x1,5	3 - 6.5	2 - 5	28	6	14	50
m-seal EMC M16x1,5 5,0- 10,0 ¹⁾	84201802	M16x1,5	5 - 10	3.5 - 8	33	6	20	50
m-seal EMC M20x1,5 6,0- 12,0 ¹⁾	84201804	M20x1,5	6 - 12	4.5 - 10	32	6	24	50
¹⁾	84201805	M20x1,5	7.5 - 14	5.5 - 11.5	40	8	24	50
m-seal EMC M25x1,5 10,0- 18,0 ¹⁾	84201806	M25x1,5	10 - 18	7 - 14	43	8	30	25
m-seal EMC M32x1,5 16,0- 25,0 ¹⁾	84201808	M32x1,5	16 - 25	12 - 20	53	9	40	10
m-seal EMC M40x1,5 22,0- 32,0 ¹⁾	84201810	M40x1,5	22 - 32	18 - 27	60.5	9	50	5
m-seal EMC M50x1,5 30,0- 40,0 ¹⁾	84201812	M50x1,5	30 - 38	26 - 34	73	9	58	5

Type m-seal EMC (EMV)

Material properties



Brass nickel-plated Neoprene (CR)

Thermal properties



Temperature / temperature range -40 °C – 100 °C
short term short term: 150 °C

Fire properties



Fire classification acc. to
UL94: V2 self-extinguishing

Conformity



RoHS (EC Directive
2011/65/EU)

General technical data



Strain relief according to
DIN EN 50262

Protection class



Protection class IP68

Technical information



Halogen-free

Approvals and operating permits



cULus approval



cURus approval



VDE approval



UL Type 4x