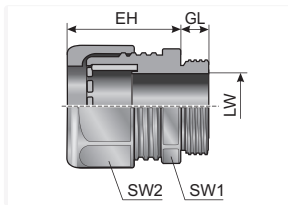
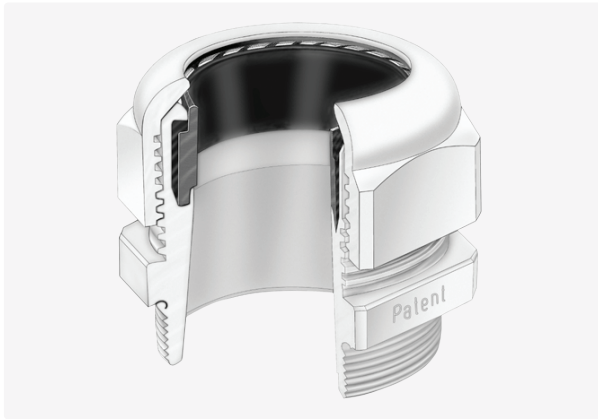


Type WKK (plastic version)



Product information

The WKK cable fittings are made of specially modified polyamide and the seals of NBR. The materials are halogen, phosphor and cadmium-free. The KV-ME multi-inserts can be used in the cable fittings.

The WKK cable fittings feature the following advantages:

- Very high protection class
- Easy to assemble
- Large clamping range
- Vibration-resistant cap nut

Information, conformities and approvals



Article	Order No.	Color	UV	Connecting thread	Clamping range (LW) mm	EH mm	GL mm	SW 1 / 2 mm	PU pcs.
WKK-M12x1,5 ¹⁾	84105050	Black	1	M12x1,5	3 - 6,5	21	8	15 / 15	50
WKK-M16x1,5 ¹⁾	84105056	Black	1	M16x1,5	4 - 8	22	8	19 / 19	50
WKK-M20x1,5 ²⁾	84105062	Black	1	M20x1,5	6 - 12	27	9	24 / 24	50
WKK-M25x1,5 ²⁾	84105068	Black	1	M25x1,5	13 - 18	31	11	33 / 33	50
WKK-M32x1,5 ²⁾	84105074	Black	1	M32x1,5	18 - 25	39	11	42 / 42	25
WKK-M40x1,5 ²⁾	84105080	Black	1	M40x1,5	22 - 32	48	13	53 / 53	10
WKK-M50x1,5 ²⁾	84105086	Black	1	M50x1,5	32 - 38	49	13	60 / 60	10
WKK-M63x1,5 ²⁾	84105092	Black	1	M63x1,5	37 - 44	49	14	65 / 68	10
WKK-M12x1,5 ¹⁾	84105000	Gray	0	M12x1,5	3 - 6,5	21	8	15 / 15	50
WKK-M16x1,5 ¹⁾	84105006	Gray	0	M16x1,5	4 - 8	22	8	19 / 19	50
WKK-M20x1,5 ²⁾	84105012	Gray	0	M20x1,5	6 - 12	27	9	24 / 24	50

Type WKK (plastic version)

Article	Order No.	Color	UV	Connecting thread	Clamping range (LW) mm	EH mm	GL mm	SW 1 / 2 mm	PU pcs.
WKK-M25x1,5 ²⁾	84105018	Gray	0	M25x1,5	13 - 18	31	11	33 / 33	50
WKK-M32x1,5 ²⁾	84105024	Gray	0	M32x1,5	18 - 25	39	11	42 / 42	25
WKK-M40x1,5 ²⁾	84105030	Gray	0	M40x1,5	22 - 32	48	13	53 / 53	10
WKK-M50x1,5 ²⁾	84105036	Gray	0	M50x1,5	32 - 38	49	13	60 / 60	10
WKK-M63x1,5 ²⁾	84105042	Gray	0	M63x1,5	37 - 44	49	14	65 / 68	10
WKK/L-M12x1,5 ¹⁾	84105650	Black	1	M12x1,5	3 - 6.5	21	15	15 / 15	50
WKK/L-M16x1,5 ¹⁾	84105652	Black	1	M16x1,5	4 - 8	22	15	19 / 19	50
WKK/L-M20x1,5 ²⁾	84105654	Black	1	M20x1,5	6 - 12	27	15	24 / 24	50
WKK/L-M25x1,5 ²⁾	84105656	Black	1	M25x1,5	13 - 18	31	15	33 / 33	50
WKK-Pg 07 ¹⁾	84101050	Black	1	PG 07	3 - 6.5	21	8	15 / 15	50
WKK-Pg 09 ¹⁾	84101052	Black	1	PG 09	4 - 8	22	8	19 / 19	50
WKK-Pg 11 ¹⁾	84101054	Black	1	PG 11	5 - 10	25	8	22 / 22	50
WKK-Pg 13.5 ²⁾	84101056	Black	1	PG 13,5	6 - 12	27	9	24 / 24	50
WKK-Pg 16 ²⁾	84101058	Black	1	PG 16	10 - 14	28	10	27 / 27	50
WKK-Pg 21 ²⁾	84101060	Black	1	PG 21	13 - 18	31	11	33 / 33	50
WKK-Pg 29 ²⁾	84101062	Black	1	PG 29	18 - 25	39	11	42 / 42	25
WKK-Pg 36 ²⁾	84101064	Black	1	PG 36	22 - 32	48	13	53 / 53	10
WKK-Pg 42 ²⁾	84101066	Black	1	PG 42	32 - 38	49	13	60 / 60	5
WKK-Pg 48 ²⁾	84101068	Black	1	PG 48	37 - 44	49	13	65 / 65	5
WKK-Pg 07 ¹⁾	84101010	Gray	0	PG 07	3 - 6.5	21	8	15 / 15	50

Type WKK (plastic version)

Article	Order No.	Color	UV	Connecting thread	Clamping range (LW) mm	EH mm	GL mm	SW 1 / 2 mm	PU pcs.
WKK-Pg 09 ¹⁾	84101012	Gray	0	PG 09	4 - 8	22	8	19 / 19	50
WKK-Pg 11 ¹⁾	84101014	Gray	0	PG 11	5 - 10	25	8	22 / 22	50
WKK-Pg 13.5 ²⁾	84101016	Gray	0	PG 13,5	6 - 12	27	9	24 / 24	50
WKK-Pg 16 ²⁾	84101018	Gray	0	PG 16	10 - 14	28	10	27 / 27	50
WKK-Pg 21 ²⁾	84101020	Gray	0	PG 21	13 - 18	31	11	33 / 33	50
WKK-Pg 29 ²⁾	84101022	Gray	0	PG 29	18 - 25	39	11	42 / 42	25
WKK-Pg 36 ²⁾	84101024	Gray	0	PG 36	22 - 32	48	13	53 / 53	10
WKK-Pg 42 ²⁾	84101026	Gray	0	PG 42	32 - 38	49	13	60 / 60	5
WKK-Pg 48 ²⁾	84101028	Gray	0	PG 48	37 - 44	49	13	65 / 65	5
WKK/L-Pg 07 ³⁾	84101650	Black	1	PG 07	3 - 6.5	21	15	15 / 15	50
WKK/L-Pg 09 ³⁾	84101652	Black	1	PG 09	4 - 8	22	15	19 / 19	50
WKK/L-Pg 11 ³⁾	84101654	Black	1	PG 11	5 - 10	25	15	22 / 22	50
WKK/L-Pg 13.5 ³⁾	84101656	Black	1	PG 13,5	6 - 12	27	15	24 / 24	50
WKK/L-Pg 16 ³⁾	84101658	Black	1	PG 16	10 - 14	28	15	27 / 27	50
WKK/L-Pg 21 ³⁾	84101660	Black	1	PG 21	13 - 18	31	15	33 / 33	50
WKK/L-Pg 29 ³⁾	84101662	Black	1	PG 29	18 - 25	39	15	42 / 42	25
WKK/L-Pg 36 ³⁾	84101664	Black	1	PG 36	22 - 32	48	18	53 / 53	10
WKK/L-Pg 42 ³⁾	84101666	Black	1	PG 42	32 - 38	49	18	60 / 60	5
WKK/L-Pg 48 ³⁾	84101668	Black	1	PG 48	37 - 44	49	18	65 / 65	5
WKK/L-Pg 07 ³⁾	84101610	Gray	0	PG 07	3 - 6.5	21	15	15 / 15	50

Type WKK (plastic version)

Article	Order No.	Color	UV	Connecting thread	Clamping range (LW) mm	EH mm	GL mm	SW 1 / 2 mm	PU pcs.
WKK/L-Pg 13.5 ³⁾	84101616	Gray	0	PG 13,5	6 - 12	27	15	24 / 24	50
WKK/L-Pg 16 ³⁾	84101618	Gray	0	PG 16	10 - 14	28	15	27 / 27	50
WKK/L-Pg 21 ³⁾	84101620	Gray	0	PG 21	13 - 18	31	15	33 / 33	50
WKK/L-Pg 29 ³⁾	84101622	Gray	0	PG 29	18 - 25	39	15	42 / 42	25
WKK/L-Pg 36 ³⁾	84101624	Gray	0	PG 36	22 - 32	48	18	53 / 53	10
WKK/L-Pg 48 ³⁾	84101628	Gray	0	PG 48	37 - 44	49	18	65 / 65	5
WKK/NPT 3/8" ³⁾	84102050	Black	1	3/8"	2 - 6	22	15	19 / 22	50
WKK/NPT 3/8" ³⁾	84102052	Black	1	3/8"	4 - 8	22	15	19 / 22	50
WKK/NPT 1/2" ³⁾	84102054	Black	1	1/2"	5 - 9	27	13	24 / 24	50
WKK/NPT 1/2" ³⁾	84102056	Black	1	1/2"	9 - 12	28	13	24 / 24	50
WKK/NPT 3/4' 9-16 KV ³⁾	84102058	Black	1	3/4"	9 - 16	32	13	33 / 33	50
WKK/NPT 3/4' 13-18 KV ³⁾	84102060	Black	1	3/4"	13 - 18	32	13	33 / 33	50
WKK NPT 1/2' 5-9 KV ³⁾	84102014	Gray	0	1/2"	5 - 9	27	13	24 / 24	50
WKK NPT 1/2' 9-12 KV ³⁾	84102016	Gray	0	1/2"	9 - 12	28	13	24 / 24	50
WKK NPT 3/4' 9-16 KV ³⁾	84102018	Gray	0	3/4"	9 - 16	32	13	33 / 33	50
WKK NPT 3/4" 13-18 KV ³⁾	84102020	Gray	0	3/4"	13 - 18	32	13	33 / 33	50

¹⁾ With cURus- approval

²⁾ With cULus- approval

³⁾ Discontinued product!

Type WKK (plastic version)

Material properties



mod. polyamide PA 6Per-
bunan (NBR)

Thermal properties



Temperature / temperature range -40 °C – 100 °C
short termshort term: 120 °C

Protection class



Protection class IP54, IP68 up to IP65 for smooth
surfaces, with additional O-ring type OR to 10 bar

Fire properties



Fire classification acc. to
UL94: V0 self-extinguishing

Chemical resistance



Resistant to: Alcohol,
Greases, Fuels, Mineral oils

properties as per EN 45545-2 C.I.T. R22 / R23 HL3 ; LOI R22 / R23 HL3 ; Ds (max.) R22 / R23
:43 AM 33.8.2017 X 70-100-1/-2 600°C (1112 °F), ISO 4589-2, ISO 5659-2 (25 kBT/m²)

Technical information



Halogen-free

Conformity



RoHS (EC Directive
2011/65/EU)

Approvals and operating permits



EU railway approval



CSA approval



cULus approval



cURus approval



VDE approval

All details given in our sales brochures and catalogues, as well as the information available online, are based on our current knowledge of the products described. The electronic data and files made available by Murrplastik, particularly CAD files are based on our current knowledge of the product described. A legally binding assurance of certain properties or the suitability for a certain purpose can not be determined from this information. All information with respect to the chemical and physical properties of Murrplastik products, as well as application advice given verbally, in writing or by tests, is given to the best of our knowledge. They do not release the buyer from the obligation to carry out his own tests and trials in order to determine the concrete suitability of the products for the intended purpose. Murrplastik accepts no responsibility for the available information being up-to-date, correct or complete. Neither do we accept responsibility for the quality of this information. Murrplastik accepts no liability for damage caused as a result of using our products. Murrplastik reserves the right to make technical changes and improvements through constant further development of products and services. Our General Terms and Conditions apply.