

Linear Guides

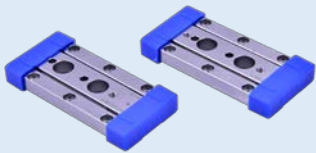
LSH, LSD, LRM and LGC Series



Standard Rail LSH, LSD
Rail Width: 15mm – 34mm



Miniature Rail LRM
Rail Width: 5mm – 15mm



Cross Roller Guide LGC
Roller size: 1.5mm – 6mm

High Quality

- Hardness HRC58-62
- Vertical Integration
- Computer monitored manufacturing systems
- Lower noise

Comprehensive Testing

- Accuracy
- Friction
- Swaying & straightness
- 210 km life cycle under ½ C50
- Hardness control

Cost effective

- Direct Interchange with major brands
- Price at least 30% less than other brands.

(based on competitor list price survey)

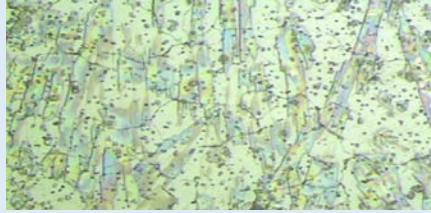
Manufacturing Process

Induction Hardening



Preheating – Quenching – Tempering, provides stable rigidity and precise control of hardness and depth.

Cryogenic/Subzero Treatment



Removes impurities and increases the lifespan of the block.

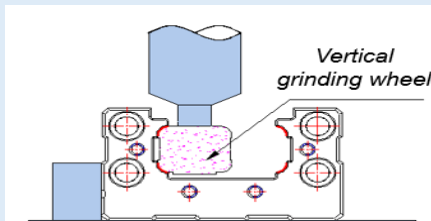
Precision Drilling



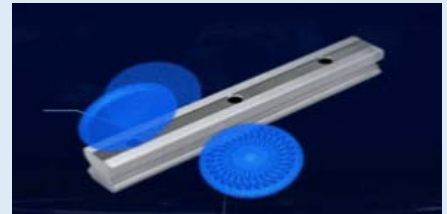
Reduces the accumulated errors during machining by drilling 10 holes at once.



Grinding of the block and rails



A grinding wheel controlled by computer grinds the block to guarantee uniformity and accuracy.



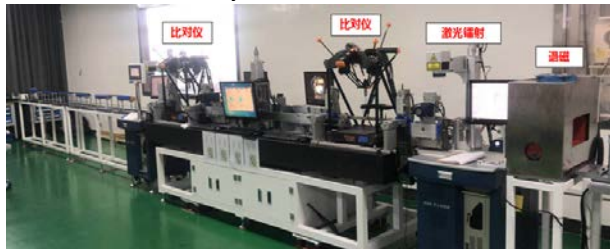
Grinding wheels grind 3 sides of the rail at once to limit error and ensure accuracy.

Quality Control Process

Swaying & Straightness Inspection



Rail Accuracy & Classification



Friction Inspection



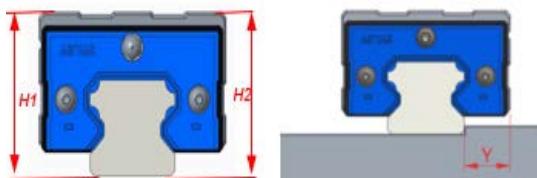
Lifespan Testing



Chemical Analysis



Noise Testing



- Lifespan Testing has shown our linear guides showed no obvious signs of wear after 210km of ½ C50 testing!!!
- Strict tolerance with rail&block accuracy and classification